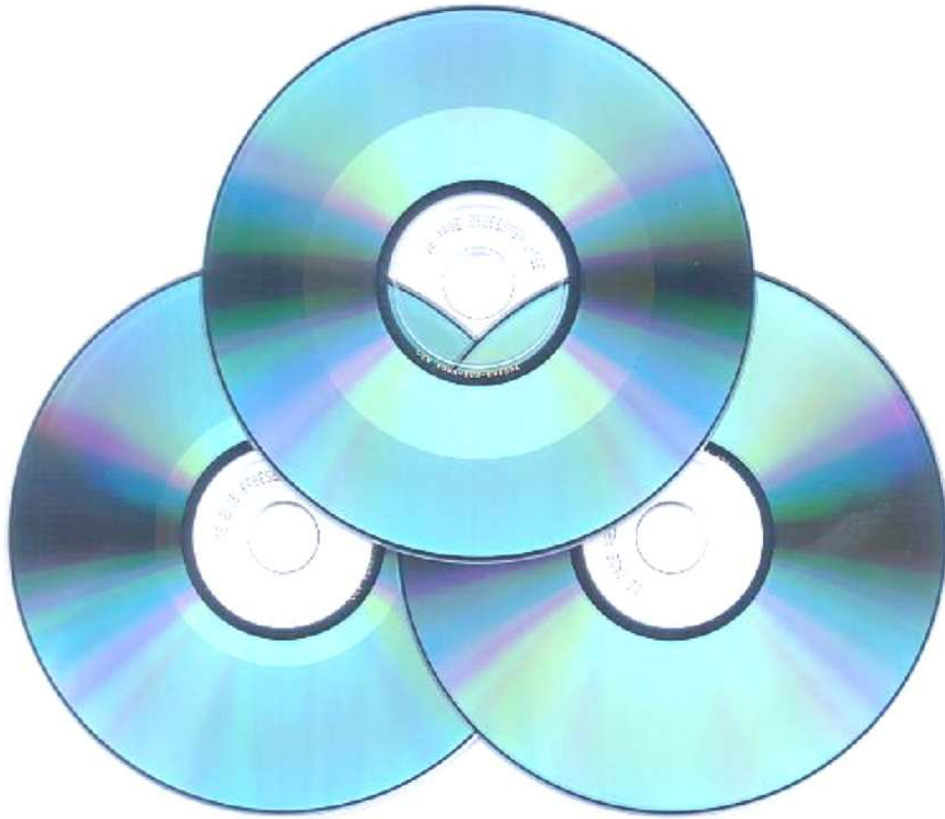


WELCOME TO GUI CDRWSEL



A GUI to RSJ command line mode

WELCOME TO GUI CDRWSEL

P1/ Prerequisites :	3
P2/ CDRWSEL installation :	3
P3/ CDRWSEL Start parameters :	4
1 / Main Appl Window :	5
V1 Window:	5
Bar:	6
Window:	7
J Window:	7
2 / 'V1 Window' sub-functions:	8
Iso->CD or Trk->CD:	8
Wav->CD:	9
MP3->CD:	9
Trkcopy :	10
Trk->Iso :	11
Cdcopy :	11
Eject :	11
3 / Customization/Settings :	12
Setup	13
Help	13
4 / How to finalize ?	14
5 / Recorder:	15
6 / Define ini parameters :	16
7 / Special attach message :	17
8 / Initial Run - step by step :	18
9 / Help :	19
10/ Tips :	20
11/ Change log :	22
A / Author comments :	26

WELCOME TO GUI CDRWSEL

P1/ Prerequisites :

Great RSJ V4 or higher from (<http://www.rsj.de>)
(probably it works with V3 too but I didn't test it. Of course, you can try it)

REXXUTIL (standard OS/2 - eCS DLLs)

- I strongly recommend the use of **DANI's** drivers

Kill.exe from <http://hobbes.nmsu.edu> (used to reload RSJ daemon)

or PKill.exe from TOP210.ZIP (or higher) package on hobbes link.

Trk2iso from <http://hobbes.nmsu.edu> (for track to ISO option)

Cdrom.exe from <http://hobbes.nmsu.edu> (used to enable cd-rom door close function)

Z.exe (z_test12) from <http://dink.org/z/download.htm> (for MP3 to CD option)

RAMFS drive can be used for temporary file "SET TMP=" under config.sys
(If you would like use it, download it from hobbes "RAMFS110" or higher)

P2/ CDRWSEL installation :

Run INSCDRW.cmd to create object on the desktop

Run INSCDRW1 if you are under eCS1.x

(It should be run from install directory)

To start CDRWSEL, click 2 times on its desktop icon.

(If it is a first install (no INI file exist), Customization/Settings window opens. Check the suggested drive list and click OK. Cdrwsel is ready to work)

WELCOME TO GUI CDRWSEL

P3/ CDRWSEL Start parameters :

```
CDRWSEL -i -s -u -vol -cdani
```

- i - No more needed. Always uses INI file now
- s or -q (-s) - Activate Speed selection or (-q) use quiet mode
(-s) the parameter can be overwritten by INI file
- u or -t (-u) - Use only Upper case characters into help viewer
(-t) enable task list option.
- vol - Display the volume label in a "popup" (if available). Dropping focus will close the "popup" window.
- cdani - Use old "Refresh" process
- l - (L) Enable small debug mode (produces a cdrwsel.log file at close time)
- NVC - Option to add if NORMAN Virus Control is installed and you enabled "Scan new or changed files" under On-access-scanner (NVC configuration) or CDRWSEL will not start (drrexx will open) like other rexx tools. This option adds a delay during INI file read.
- SDM - Suppress CDWFSD reload message at CDRWSEL initialization with load RSJ daemon selected.

Exemple:

```
CDRWSEL -i -q -t -vol -sdm
! ! ! ! +--> Suppress CDWFSD reload message if already up
! ! ! +-----> Show volume name of inserted CD if available
! ! +-----> Enable in "task list" option
! +-----> Use quiet mode
+-----> Use ini file
```

```
CDRWSEL /i /q /t (This syntax is correct too)
```

Note:

When the program is first run and the cdrwsel.dat file doesn't exist, the New Drive List is run after answer to missing file message. Respond "save" to the first opened window before changing or updating drive list.

WELCOME TO GUI CDRWSEL

1 / Main Appl Window :

Appl Window *style* is selected through "*define ini parameters*" window

V1 Window:



RSJ "drives" - Title may change according to language selection [CONTAINER]
 Enter or click twice and change [Free to Attached], [Attached to finalize],
 Or start [CD_view] (see mode), [restore CD_view].

Icons Color:

Green=Free, **Yellow**=Running, **Red**=Attached, **Black**=Error,
Orange=Free CD-ROM, **Blue**=CDView

mode	- Change from "Attach" to "View" or reverse	[PUSHBUTTON]
Sessions	- Select the number of existing sessions to skip (<16)	[SPINBUTTON]
Settings	- Access to defined drive list dialog	[PUSHBUTTON]
Status	- Gives the result of chkdsk /v of [?:] (available space on cd - number of sessions...)	[PUSHBUTTON]
Run	- Run personal program	[PUSHBUTTON]
Help	- Direct Help access	[PUSHBUTTON]

(RMB) popup options (will change when on path, CDROM or attached CDRW):

trkcopy	- Trackcopy function (data, audio, video)
trk2iso	- Converts each *.trk file into *.iso file
Iso->CD	- Create a CD from an iso image file
Trk->CD	- Create a CD from a track image file
Wav->CD	- Create an audio-CD from wave file
MP3->CD	- Create an audio-CD from MP3 files
CDboot	- Calls cdboot (PM) for the drives "Attached state"
Cdcopy	- Use RSJ Cdcopy functions
FlMan	- Open integrated small filemanager (available on paths only)
Pid's	- View and manage background cdrwsel started processes.
Close	- Close drive door (if cdrom.exe is installed)
Eject	- CD-ROM or free CD-RW drives

Note : This window supports Color and Font drag and drop (a few limitations only)

WELCOME TO GUI CDRWSEL

Bar :



X	- Exit program	[PUSHBUTTON]
S	- same as Primary menu	[PUSHBUTTON]
i	- same as primary menu	[PUSHBUTTON]
A	- CD_Attach	[PUSHBUTTON]
V	- CD_View	[PUSHBUTTON]
F	- Direct access to finalize options	[PUSHBUTTON]
R	- Run personnal program	[PUSHBUTTON]
H	- Direct Help access	[PUSHBUTTON]

Note : Background, A and V buttons use same colors as under "V1 Window"

WELCOME TO GUI CDRWSEL

Window:



CD:	- this field is empty at first run time	[SPINBUTTON]
Drive:	- Drive letter to be used with the attached CDRW	[SPINBUTTON]
Sessions:	- Select the number of existing sessions to skip	[SPINBUTTON]
Attach	- Perform cdattach using previous parameters	[PUSHBUTTON]
View	- Start CDView using CDR/W parameters	[PUSHBUTTON]
Finalize	- Direct access to finalize options	[PUSHBUTTON]
Status	- Information on CD	[PUSHBUTTON]
Settings	- Access to define drive list dialog	[PUSHBUTTON]
Run	- Run personnal program	[PUSHBUTTON]
Help	- Direct help access	[PUSHBUTTON]

J Window:



CD:	- this field is empty at first run time	[SPINBUTTON]
Drive:	- Drive letter to be used with the attached CDRW	[SPINBUTTON]
Sessions:	- Select the number of existing sessions to skip	[SPINBUTTON]
Attach	- Perform cdattach using previous parameters	[PUSHBUTTON]
View	- Start CDView using CDR/W parameters	[PUSHBUTTON]
Finalize	- Direct access to finalize options	[PUSHBUTTON]
Status	- Information on CD	[PUSHBUTTON]
Settings	- Access to define drive list dialog	[PUSHBUTTON]
Run	- Run personnal program	[PUSHBUTTON]
Help	- Direct help access	[PUSHBUTTON]
Speed	- Change current speed stting only	[PUSHBUTTON]

(RMB) on any background window style opens the same popup menu. You can reset fonts and colors or reset the in-use drive list if "attach" remains disabled for a drive letter.

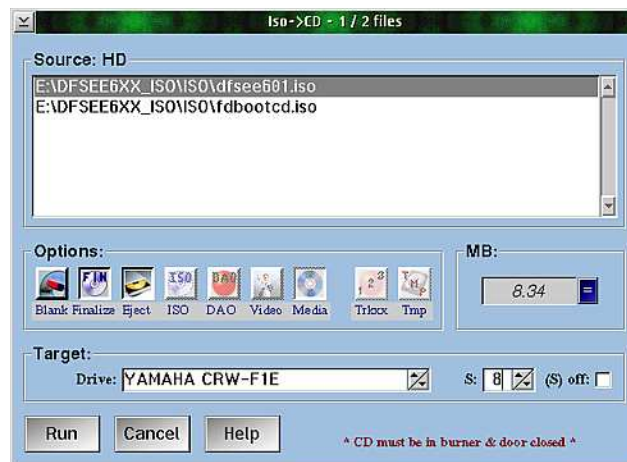
Note: Enter (2 click) on a drive will open "V1 Window" sub-functions popup menu

WELCOME TO GUI CDRWSEL

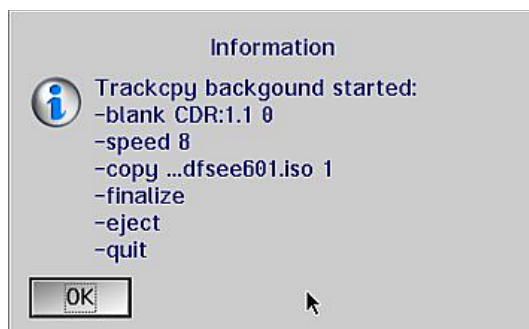
2 / 'V1 Window' sub-functions:

Iso->CD or Trk->CD:

- Use "V1 Window" style
- Add full path name where all *.iso (trk) files are under Vpaths (do it one time only)
- Under "V1 window", change mode to CD_view
- RMB on the HD path name where *.iso (trk) files are
- Select Iso->CD (Trk->CD) from the popup window



- Select the source *.iso (trk) file (Source: HD - One selectable file only)
- Select the destination drive (Target:)
- Select "Blank" for CD-RW if needed
- Select "Eject" at end of process
- Select if speed has to be changed or not
- Select the correct speed to use and check the selected size (click =)
- Be sure to have a CD in the burner and drive door is closed

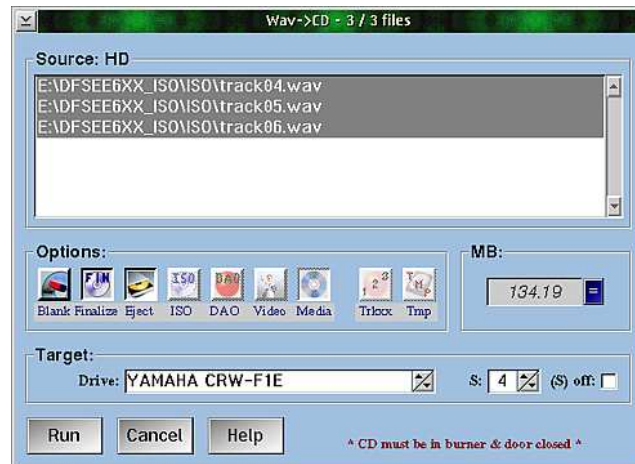


Type of message issued after you press the "Run" button. You'll find all step which are going to be processed according to your request. As you can see, the process runs in background as "detach" mode (progress bar isn't available yet. Door opens at end of process with "Eject" option). The total process time to finish is file size and speed dependant.

WELCOME TO GUI CDRWSEL

Wav->CD:

- Use "V1 Window" style
- Add full path name where all *.wav files are under Vpaths (do it one time only)
- Under "V1 window", change mode to CD_view
- RMB on the HD path name where *.wav files are
- Select Wav->CD from the popup window



- Options and target selection is similar to *.iso process except "multi-selection"

MP3->CD:

- Use "V1 Window" style
- Add full path name where all *.mp3 files are under Vpaths (do it one time only)
- Under "V1 window", change mode to CD_view
- RMB on the HD path name where *.mp3 files are
- Select MP3->CD from the popup window (z.exe needed)

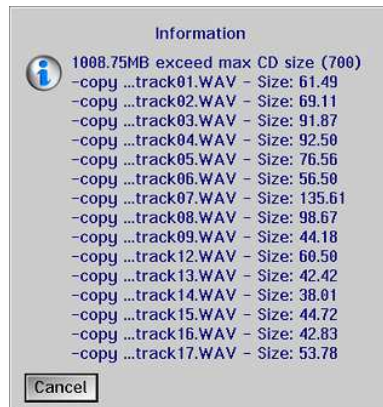


- Options and target selection is similar to *.iso process except "multi-selection"

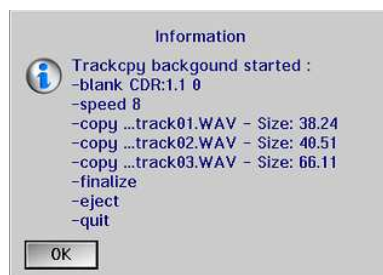
WELCOME TO GUI CDRWSEL

Process uses two stage:

1. MP3 to wave (message field is updated during MP3 to wave process)
2. wav to audio CD (message appears if maximum CD size is exceeded)
 - a. If size exceed 650MB, you can continue if media allows 700MB
 - b. If size exceed 700MB, process will be aborted .

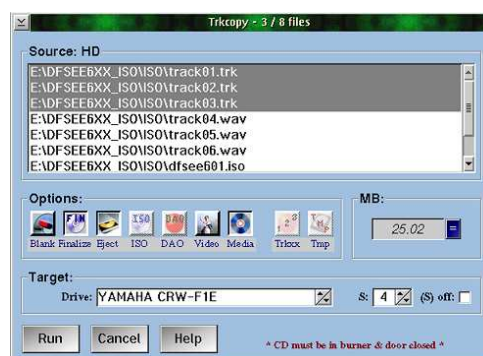


Normal process gives you an information message only and audio CD is created.



Trkcopy :

- a. Use "V1 Window" style in CD_view mode
- b. Select the drive / path to work with (from CD and from HD screenshots follow)
- c. RMB on the delected input
- d. Select Trkcopy + (expert or datas or audio or DAO or video)



- Options and target selection are similar other process with "multi-selection"

WELCOME TO GUI CDRWSEL

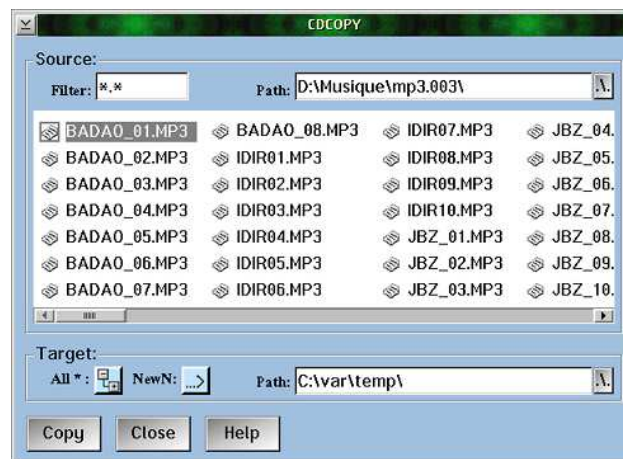
- DAO will select all files and is available for audio CD source only
- Media will allow you to change destination from HD to CD or reverse.
- ☒ Expert - Most options are validated and wrong selection can give bad result
Warning
- ☒ Datas - Only options for data tracks processing is enabled
- ☒ Audio - Only options for audio tracks processing is enabled
- ☒ DAO - Only audio CD to audio CD is enabled (full copy with disc at once)
- ☒ Video - Set on/off sector size of 2336 bytes (instead of 2048 bytes)

Trk->Iso :

This option allow you to copy tracks to a HD path destination and process them to get ISO image files (trk2iso is needed).

Cdcopy :

- a. Use "V1 Window" style in CD_view mode
- b. Select the path to work with.
- c. RMB on the selected input
- d. Select Cdcopy

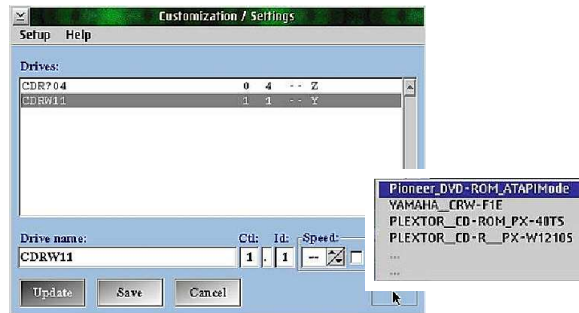
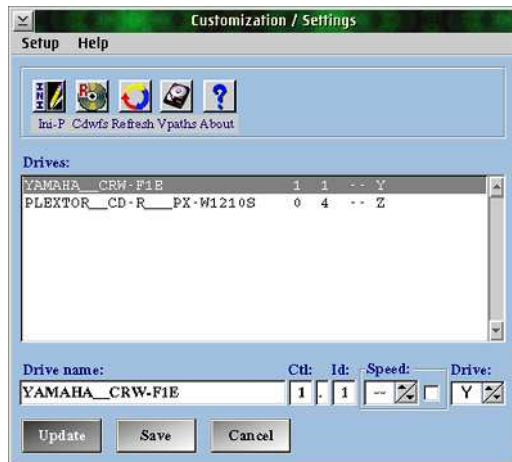


- You can change the initial source path
- You can add a filter to have specific files only (wildcard * can be used)
- 'blank' character isn't supported in path or file name
- Specify target path (an attached CD seen as HD can be used)
- Select 'All *' to Cdcopy all files from current and sub directories
- Select 'NewN' to Cdcopy a file under a different name
- For more information, review Cdcopy under RSJ documentation

Eject : May be used on CD-ROM or not attached CD burner.

WELCOME TO GUI CDRWSEL

3 / Customization/Settings : (Select [settings] or [s] on main window)



"Refresh" : If names aren't resolved, click RMB on the square to open a popup window and select the right name.

Drives

- All defined drives [LISTBOX]
- 1/ Click once to change DRIVE name (entry fields)
- 2/ Click twice to delete unwanted DRIVE from list (will be kept for Vpath)
- 3/ Manually enter a new drive into entry fields

Note:

You'll be prompted to save the new drive list at CDRWSEL close.
Value of CTL + ID is checked to determine if the input is a new entry or should overwrite the selected drive.

Drive name

- A generic name for the drive to use

ctl

- Adapter number (could be found under Hardware Manager)

id

- Drive position (IDE) or SCSI ID

Speed

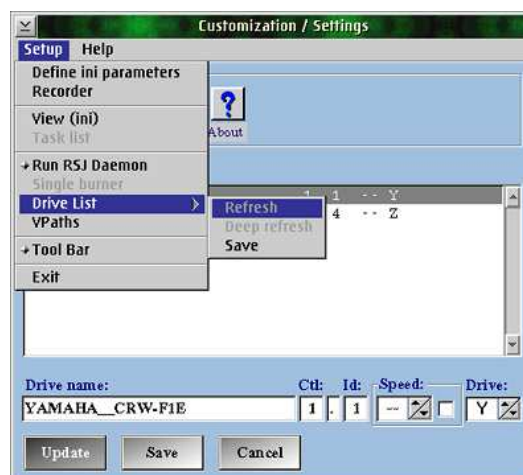
- Change current drive speed and new default for next use
- [x] click on check box to force use of speed parameter

update (Ok)

- Update and put last in list the selected line with new values

Drive

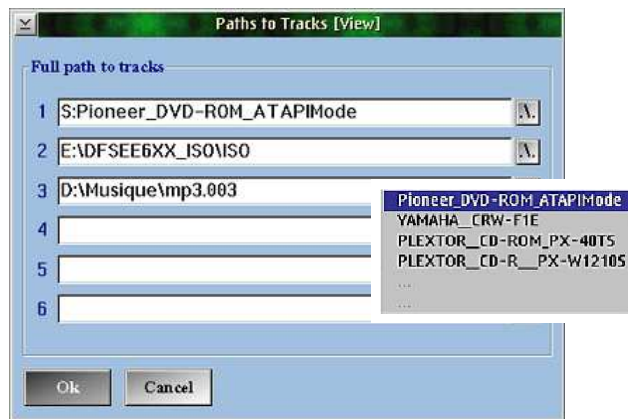
- Assign a drive letter to a device (option enabled with "V1 Window" style)



WELCOME TO GUI CDRWSEL

Setup

- Access to
 - Define ini parameters (Customizable INI file)
 - Recorder (check "Run RSJ Daemon" to have this option enable)
 - View (ini)
 - Task list (with added parameter : '-t')
 - Killer (select a thread killer tool available under CDRWSEL directory)
 - Run RSJ Daemon
 - Single burner (Usable if less than 2 drives in list)
(Use this option when only 1 physical burner is installed and **normal attach doesn't work**)
 - Drive list
 - 1) Refresh (drive list with drive names found)
 - 2) Deep refresh (* checks each adapter position)
 - Vpaths (define paths to tracks files - max=6)



- * To specify an audio CD in a CD-ROM, ignore the first "\" and the text following "drive_letter:" is used as comment and drive is supposed CD-ROM:
S:PIONEER_DvD-ROM (see V1_Window screenshot)
(? opens a popup menu with the list of removed drives from "refresh list")
- * Blanks in path name are not supported (program will change them into "_").
- * If a path doesn't exist, it is created (can create more than one level)
- * **RECORDER** (reserved upercase value) in input field can be usefull to have [CDVIEW CDR:] for CD creation from iso files .
- Tool Bar (make tool bar visible or not visible)

* (deep scan) - Auto detection of eligible CDRW/RSJ (unresolved names are replaced with generic names)

- 1/ CDRWxy (Drive is ready ctl=x, id=y)
- 2/ CDR?xy (Drive not ready flag received e.g. no CD in the burner)
- 3/ CDR*xy (Drive in use. Z: is already in use)

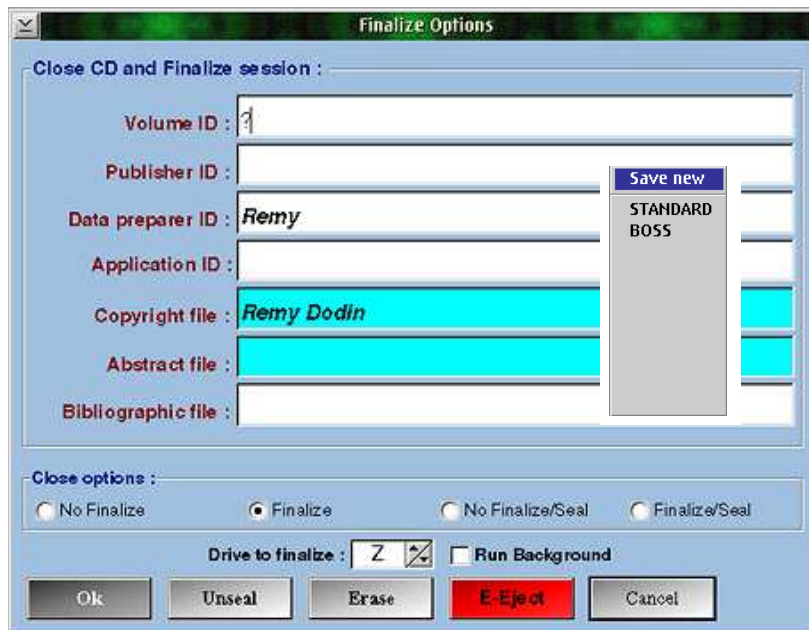
Help

- Access to
 - How to : Read file cdrwsel.doc
 - ? : My tool version.release.modification

Note : If drive list has changed without saving, you'll be prompted to save it at exit

WELCOME TO GUI CDRWSEL

4 / How to finalize ? (Select [Finalize] or [F]. Under V1 window, click on [attached] drive)



Click on Finalize button from app Windows followed by :

- a/ No finalize = Close CD only
- b/ Finalize = Close CD and finalize
- c/ No Finalize/Seal = Close & Seal CD
- d/ Finalize/Seal = Close and finalize & seal CD
- e/ Emergency eject = Flush buffers and eject the CD
- f/ Add complementary comments (only validated with b/ and c/)
 - e.g. Copyright, Author ...
- g/ Unseal (remove seal protection if CD was written by RSJ)
- h/ Erase RW media only
- i/ Verify "Drive to finalize"
- j/ Check "Run Background" to allow finalize as detach process (usefull if more than one finalize has to be done)

RMB click on background of "Close CD and finalize sessions :" part opens a popup window. You can save or restore general updates from entry fields (see the cursor position on the picture). A "?" in the "Volume :" entry field does the same.

- * After selecting save, give a title to your new profile (uses to update the popup window list)
 - e.g. - DEFAULT (for general comments)
 - CDRWSEL (for my backup of CDRWSEL)
- * The list allows 10 entries.

WELCOME TO GUI CDRWSEL

5 / Recorder: (Select [Settings] + [Setup] + enable [Run RSJ Daemon] + [Recorder])



* The RSJ version is displayed in the window title.

- config.sys (select this option if you want to change CDWFSD defaults in config.sys. Changes effected at next reboot)
- CDRWsel (select this option to load/change CDWFSD parameters for all new attach processes - Detach all drives before using dynamic CDWFSD replacement)
- Other options are same as under RSJ CD Writer control

WELCOME TO GUI CDRWSEL

6 / Define ini parameters : (Select [Settings] + [Setup] + [Define ini parameters])



* Click on save to create or update cdrwsel.ini file

Language selection :

- Select your language FR / US / SYSTEM (set_lang= from config.sys)

App Window style :

- Select your app style window from the drop down list

Spin drive letter position :

- Select the default drive letter to use for cdattach
- Use 1 for Z, 2 for Y, 3 for X and so on (don't use below range)

Spin generic name position:(*)

- Select the Drive name mostly used (= line number into the list)

(*) USE last :

- Click on this option to use closing values instead of previous defined values

First available drive letter :

- Define lowest drive letter available for Attach
- Range goes from Z to the letter you assign

Max Host id adapters :

- Specify highest available ctid (example for 0 and 1 follow):
- 0 - for the first IDE controller
- 1 - for the second IDE controller
- Value may go above 3 if DANI's IDE to SCSI mapping is used.

WELCOME TO GUI CDRWSEL

Last id on any adapter :

- Specify highest IDE / SCSI id available for auto-detection
- will save time at auto-detection time (1 is good for IDE)

Build-in help viewer :

- Specify "Y" to use internal viewer, "N" for any user preference

External help editor/viewer :

- only with previous option = "N"
- specify full program path to use e.g. c:\os2\apps\epm.exe

External program :

- Drop the list down and **click on -new-** to create a new entry
- Clicking on an existing entry will prompt whether to delete it ?

Auto Run :

- Start the selected program at CDRWSEL startup

Icon() :

- Select 'V1 Window' icon size. (none) = max, 1 = medium, 2 = small

7 / Special attach message : (Appears if attached CD/DvD isn't blank)

Attaching a non-blank CD results in displaying the number of sessions, whether CD is data or audio and total used on CD.



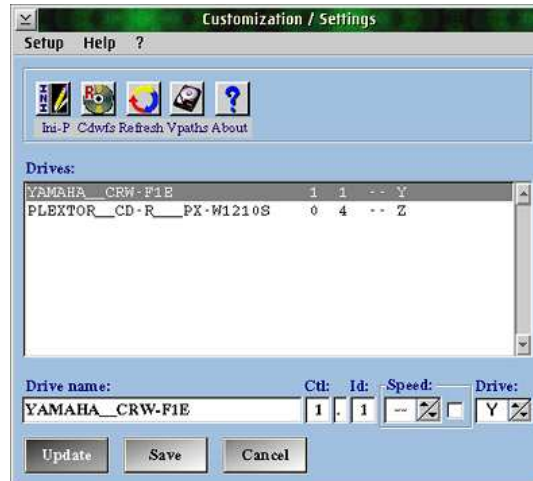
Choose one of the options. select "continue" to work with this attached CD.

Note: If a volume name exist and "-vol" parameter was specified, following popup is displayed with previous window until this one loses focus.

WELCOME TO GUI CDRWSEL

8 / Initial Run - step by step :

- a. RSJ must be installed
- b. Unzip cdrwsel zip package into a temporary path
- c. Run inscdrw1.cmd to installed cdrwsel, following eCS rules
- d. Click on cdrwsel icon to start it
- e. Settings window now appears :



If the drive list is ok, click on save else click on **"Refresh"**. According to your daniatapi.flt configuration, it may switch to "Deep refresh" and update the not_burner_list if name resolution fails (generic name are used). If ctl.id in the "refresh" list (information from rmview) aren't correct, run "deep refresh" (change names from the bottom line if needed).

- f. Restart CDRWSsel
- g. From the main window, you can select settings to change the drive list (don't forget to save the list after you change it). You can select **Setup** and :
 - 1) Initialize to change window style (bar - window - V1 window - J window).
 - 2) Click on Run RSJ Daemon if CDWFSD is commented in your config.sys file. This will enable Recorder option too. Without CDRWSel parameter -SDM, a message will suggest you to reload CDWFSD at CDRWSel initialization if the daemon was previously loaded.
 - 3) Once Recorder is enabled, you can change CDWFSD settings
 - 4) Add or Update Vpaths list with CDROM drives and or tracks path on your hard disk

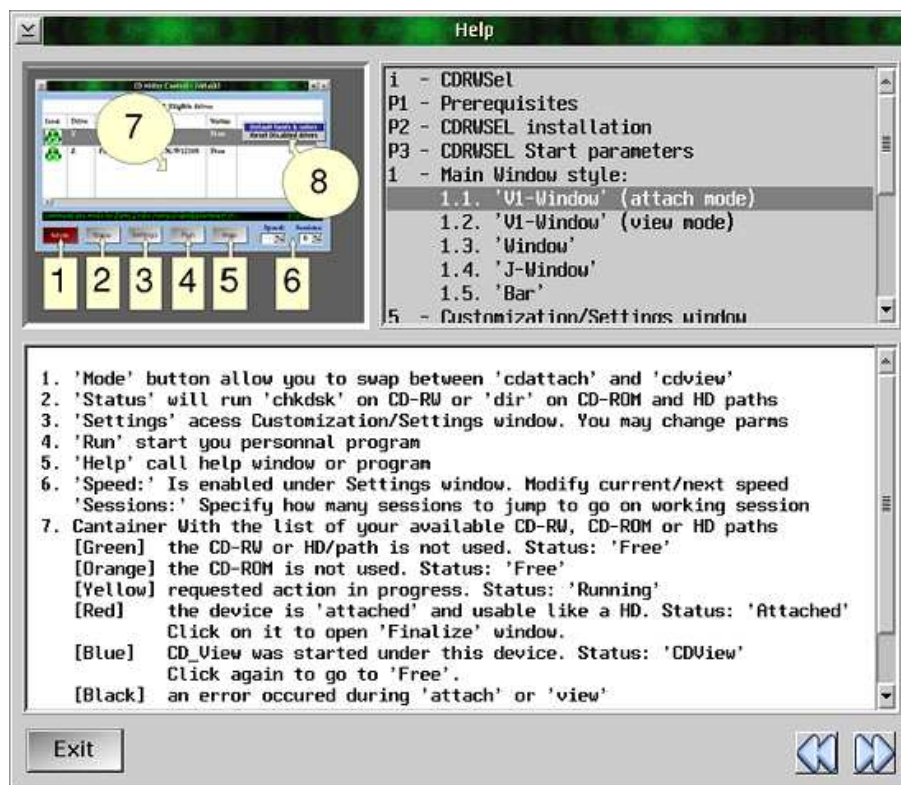
WELCOME TO GUI CDRWSEL

9 / Help :

A new help program is added with CDRWSEL package. This program is easy to use and can be used by every body to create quick help without compilation. CDRWSEL calls the help program with a positional parameter to point into the right part.

➤ `cdrwhelp.exe parm01 parm02`

- `parm01` is the pointer to the corresponding line number into the TOC.
- `parm02` is the input text file with a `htx` extension (default = `cdrwhelp.htx`)
- The corresponding `dll` is named `cdrwhelp.dll` (fixed name but you can create yours)



WELCOME TO GUI CDRWSEL

10 / Tips :

Starting CDRWSEL without RSJ installed: add "SET CDRWSEL_BP=CDWFS.IFS"

Error at startup :

If NVC is used try to use the -NVC parameter (PB: drrex opens)

Check that under "set path=" or "set dpath=" has the root in it where config.sys is.

Check that under "set tmp=", the path doesn't include ANY spaces.

Check that RSJ daemon was added into config.sys as "run=" with or without "REM"

Delete older CDRWsel.INI under your user_ini path.

If pre-V2.13.2 release had a correct drive list with the "refresh" option, you can add parameter -cdani (cdrwsel -cdani) to process "refresh" as under v2.13.1

RC20 during attach :

Check that the ctl and id numbers are correct. Normal drive list refresh can have incorrect values depending on your hardware configuration and driver loading sequence under your config.sys. If this is the case, change max ctl number to a higher value and run refresh (deep scan) with a CD inserted into the drives. Ready burners have a generic name starting with 'CDRW'. Use the found ctl.id to correct the normal refresh list

- If the drive was added under CDDRV.INF, check for correct syntax.
- To check RSJ attach command, run following command in an OS/2 window :
cdattach z: -d CDR:x.y (x= ctl_number , y=id_number - the dot can be changed to ',')
- If You only have one burner on your system, try to use 'Single burner' option under setup

RMB Click is available under "V1 Window" only. Right-click on background !!

Attach or View failed :

Change the separator between ctl and id from "." to ",". May attach unpredictable drive under specific configuration (be carefull and do several tests).

DvD write errors with RSJ 5.xx :

Check which OS2CDROM driver your are using and try an other build. Very old or the very last build gives trouble on my system.

For any other problem:

Take screenshots of the failure and explain what you were doing when the problem arose.

Take "view ini" screenshot and copy of config.sys and put both in a zipfile.

Start CDRWSEL with the flag -L (cdrwsel -l) and create the problem. At CDRWSEL close, file cdrwsel.log is created (usually under temp path). Add this file in the global zip file.

Send an email and specify "CDRWSEL usage problem" as subject and zipfile as an attachment.

WELCOME TO GUI CDRWSEL

Hardware Manager :

- a/ Open system setup folder (should be on the WarpCenter)
- b/ Open Hardware Manager
 - * You should know under which DMA_CTLR you attached your CDRW
Mainboard manufacturer recommendation is : 0 for disk, 1 for others
 - * Before your CDR, you'll find
ATAPI_0 - Use 0 as id
ATAPI_1 - Use 1 as id
 - * For SCSI CDR (here is a exemple)
CDROM_(3,0)
| |
| +---> lun = 0 (this isn't the Ctl value)
+-----> id = 3

Part of my config.sys file (changes only drives needed to worm drive)

```
BASEDEV=DANIATAPI.FLT /!SCSI
REM BASEDEV=DANIATAPI.FLT or DANIATAPI.FLT /RSJ
(Special caution if the flag /RSJ is used . Set option to only use one driver to map IDE to SCSI. If you use /RSJ on one unit, try to use /!SCSI on others) Read Dani's doc.
```

```
...
REM *** 2x HD - 1x DvD - 1x CDRW
REM BASEDEV=DANIS506.ADD /A:0 /BM /80WIRE /A:1 /BM /80WIRE
BASEDEV=DANIS506.ADD << UDMA & BM ok with build > n°168
...
REM *** S0=IDE_DvD S1=IDE_CDRW S2=SCSI_CDR S3=SCSI_CDRW ***
BASEDEV=OS2ASPI.DMD /ALL << If OS2ASPI is used, add /ALL
BASEDEV=LOCKCDR.FLT -S0 -S2 << Remove not used drivers
REM *** Remove lockcdr.flt if drive has to be used as reader and RSJ
REM *** In this case, update cdrv.inf with the correct entry
DEVICE=C:\CFS\RSJSCSI.SYS -s
IFS=C:\CFS\CDWFS.IFS -s
RUN=C:\CFS\CDWFSD.EXE -p "C:/CDWFS/disk_cache" -c716800 -b10240 -t2 -i3 -s0
...
```

If CDRWSEL attach or view is not working, try previous '**red**' recommendations first (was reported by user). IDE to SCSI drive mapping may affect different ctl.id to your devices than those really are. Now, "Refresh" updates the not_burner_list and switches to "Deep refresh" if "/RSJ" is used or "/!SCSI" is missing. The not_burner_list will be usefull to replace generic names if name resolution failed. (-s is new with RSJ 5.5x)

New options exist for LOCKCDR.FLT. Read RSJ documents for more information

WELCOME TO GUI CDRWSEL

11/ Change log :

Thanks to Alan Townsend (Canada), Erik, Kevin, Tom, Mike and all "Anonymous" and a special thank to Bernd for their good suggestions and tests resulting in an improved CDRWSEL for all (exe and docs)

* New V3.0.4 m007

- 1/ Corrected a visual bug under cdcopy after changing source path
- 2/ Now, Integrated filemanager can be called from 'V1 Window' popup with selected drive as default drive (FIMan option)

And a few enhancement under **integrated filemanager**:

- 3/ Corrected a visual bug (list refresh)
- 4/ Now, directory can be renamed (RMB)
- 5/ Names with blank chracters are supported
- 6/ Direct translate filename blank characters to underscore characters (popupmenu)

* New V3.0.4 m006

- 1/ Smaller 'expand' and 'collapse' icon
- 2/ Smaller CDRWBMP.DLL file
- 3/ Corrected a crash using recurse on empty directory under 'cdc copy'

* New V3.0.4

- 1/ Added -SDM parameter
- 2/ Updated installation programs to add -sdm parameter as default.
- 3/ 6 CDRWSEL.ini file entries are now under one entry (performance issue)
note: older INI file is saved as CDRWSEL.BAK for fallback.
- 4/ Now, you can choice between kill and pkill process for the pid kill feature.
- 5/ Corrected several bugs
 - * If drive names differs for a few caracters only, attach may use the wrong drive.
 - * MP3toCD function didn' stop process if MP3 conversion failed.
 - * MP3toCD conversion wrongly increases output wave file name after "9"
 - * A few other bug ...
- 6/ During background burn process, a program called CDRWpba.exe (e.g. progress bar program) can be started. Available parameters are burn progress temp file name, burn commands etc... (function is activated if cdrwpba exist under cdrwsel directory)
- 7/ Changed docs and CDRWSEL help file.
- 8/ Changed some coding to reduce line code.

WELCOME TO GUI CDRWSEL

* New V3.0.3

- 1/ Ctl and Id input field are checked for numerical value
- 2/ Corrected a Bug with DVD when finalize is requested while burning is in progress.
- 3/ If drive name contains "DVD" during refresh and speed is enable, 4x is use as default (for DVD, I suggest to use max speed or reset the speed to max to prevent write errors)
- 4/ Corrected a bug using the eject option from "V1 window" RMB menu.
- 5/ Refresh or Deep Refresh add now a default Drive with Ctl=99 and Id=99 (these values are ignored during process and result into a CDR: parameter (This entry is needed if you would like use cdview to burn your ISO file. Adding RECORDER entry under Vpath is no more needed but available)
- 6/ Now, ISO->Cd, Trk->CD, Wav->CD, MP3->CD and Cdcopy are available under "J Window" popup menu (Click 2 times on a drive calls this menu).
From this window style, each option except Cdcopy prompt you for a path where files are supposed to be.

* New V3.0.2 m008

- 1/ Added " -NVC " option to correct a bug when a specific Norman Virus Control option is enabled (see help file)
- 2/ New CDRHLP.DLL file which size decreased from 2.2MB to 800KB

* New V3.0.2 m007

- 1/ Corrected a speed selection disable/enable bug under trkcopy window
 - 2/ Corrected and changed multiple 'detach' request for MP3toCD function
 - Use of specific temp directories for each request instead the same temp directory to prevent *.WAV deletion
 - 3/ Use of a different coding format for a few external commands
 - 4/ Added an enable CDROM OP/CL under settings (setup menu). To activate if cdrom.exe is installed (used to enable close of cdrom door)
 - 5/ Added 'Close' under main 'view' window popupmenu if CDROM OP/CL enabled
 - 6/ Added 'Eject' under main 'attach' window popupmenu (enabled on 'Free' drive status)
 - 7/ Ready for futur progress bar display for background processes (external function).
 - 8/ Updated *.htx files
- Restriction : multiple background request on a same burner not allowed (must be different)

* New V3.0.2

- 1/ "Background process" for finalize added (usefull to get control for an other finalize)
- 2/ Added version in main window and updated help files.

WELCOME TO GUI CDRWSEL

* New V3.0.1

- 1/ First CDRWSEL run without cdrwsel.ini file needs one check only.
- 2/ New scroll message under "V1 Window" removable with a key file
- 3/ New updated Setting window with an enable/Disable icon tool bar
- 4/ New updated "Define INI parameters" with two checkbox for 'V1' Icon size selection (this allow you 3 possibilities):
 - None is selected = Normal size (old icon size)
 - 1 is selected = Medium size (smaller than normal)
 - 2 is selected = Smallest icon sizeRestart is not needed. Icon size change is always validated (cancel didn't restore icon size to original size)
- 5/ Vpath updated to include a button to call "paths dialogue"
- 6/ "Paths dialogue" added to have easy path selection. del/ren functions exist.
- 7/ Right mouse button on a selected drive from "view" mode under "V1 Window" or Enter on a selected drive from "J-Window"
Popup Menu has more functions with new dialogue :
 - trkcopy 1/Expert (If you don't know all trkcopy functionn you may do uncompatible selection. For expert user only)
 - 2/Data (copy of RSJ specific *.TRK files)
 - 3/Audio (copy of *.WAV files (creates CD-Audio if target=CD-R)
 - 4/DAO (DAO image of audio CD)
 - 5/Video (sector size of 2336 bytes (instead of 2048 bytes))
 - Trk2Iso (copy *.TRK to a target directory and change it to *.ISO file.
 trk2iso.exe from hobbes is required - added in the test package only)
 - iso->CD Create a CD from an ISO image file
 - trk->CD Create a CD from RSJ trk image file
 - wav->CD Create a CD audio from WAV files
 - mp3->CD Create a CD audio from MP3 files (Z.exe from hobbes required.
 Added in the test package only)
- 8/ CDcopy enabled
- 9/ Multi language support added to the new functions (create language file)
- A/New standalone help added (CDRWSEL has pointers to specific help section)
(If the new help is installed into CDRWSEL path, it replaces CDRWSEL.doc)
This help program uses a bitmap.dll and a *.htx file as input

* New V2.14.0

- 1/ When you run "refresh", you could see that the list is updated with CD-ROM, DvD-rom and burners. Now, each deleted device from the list (which aren't burner) are saved in a not_burner list for futur use.
- 2/ "Refresh" procedure has changed. It removes the need of "SCSI on second PCI bus" option. If /!SCSI isn't used or /RSJ is on daniatapi driver (cdrecord compatibility), process switches to "Deep refresh" during normal "Refresh" and updates a device_list used during "Deep refresh". (**Big change to improve ctl.id & names in the drive list**)

WELCOME TO GUI CDRWSEL

- 3/ CDRWSEL INI file has a new key : CD_dvd (deleted devices from the drive list)
- 4/ "?" can be used in the Vpaths window to open a popup window with deleted device list (1) or resulting from "Refresh" switch process. Click on a device and the line is updated but you have to change the drive letter to the correct value.
Defining one Vpaths entry as RECORDER (upercase) allows to open a [CDVIEW CDR:]
- 5/ "?" in "Volume ID:" or RMB on frame border opens a popup window to save or restore a current finalize comments. Up to 10 profiles can be saved.
- 6/ When you are in "View" mode with added cd-rom. Select a "free" cd-rom and click RMB to open a popup menu. If you select trkcopy + DAO, a new popup window allows you to chose writing speed (1x to 12x). Than specify the target CD-RW (If the CD-RW is in your "V1 window" list, just give the right drive letter and it will find it (ex : Z))
- 7/ A new popup menu can be opened with a RMB click on each background window.
 - under each Window style, it allows to reset "reset fonts & colors" and "used drive letter list" (updated each time you do an attach but can disable drive letter if you didn't close de CD from CDRWSEL).
- 8/ Short help popup message are available on several part of several window (RMB)
- 9/ Create CD from ISO files (RMB on the HD path ("V1 window") where iso files are and select Iso2CD.
- A/ Emergency Eject (big button) has now a normal size and is aligned with other buttons.
- B/ With cdrwsel.cmd in the same directory as cdrwsel enables automatic cdrwsel restart after window style change.
- C/ Added a small "trace debug" option enabled with -l parameters (output=cdrwsel.log)
- D/ A few bugs corrected
 - * User program list not correctly saved under "Define ini parameters" window
 - * Old "Refresh" procedure gives wrong results in complex configuration or with cdrecord
 - * Changed a few text field
 - * Corrected a few more minor bugs.

WELCOME TO GUI CDRWSEL

A / Author comments :

THE SOFTWARE IS PROVIDED "AS IS" AND WITHOUT ANY EXPRESS OR IMPLIED WARRANTIES. THE ENTIRE RISK AS TO THE QUALITY AND PERFORMANCE OF THE PROGRAM IS WITH YOU. SHOULD THE PROGRAM PROVE DEFECTIVE, YOU ASSUME THE COST OF ALL NECESSARY SERVICING, REPAIR OR CORRECTION.

Was virus free (Norman scan) under my system on 08/22/2004 (MM/DD/YYYY)

YES , IT IS FREeware :-)

(c) Remy Dodin

PS: I'm Scanning RSJ news site regularly !
For any suggestions -> <mailto:remy.dodin@libertysurf.fr>