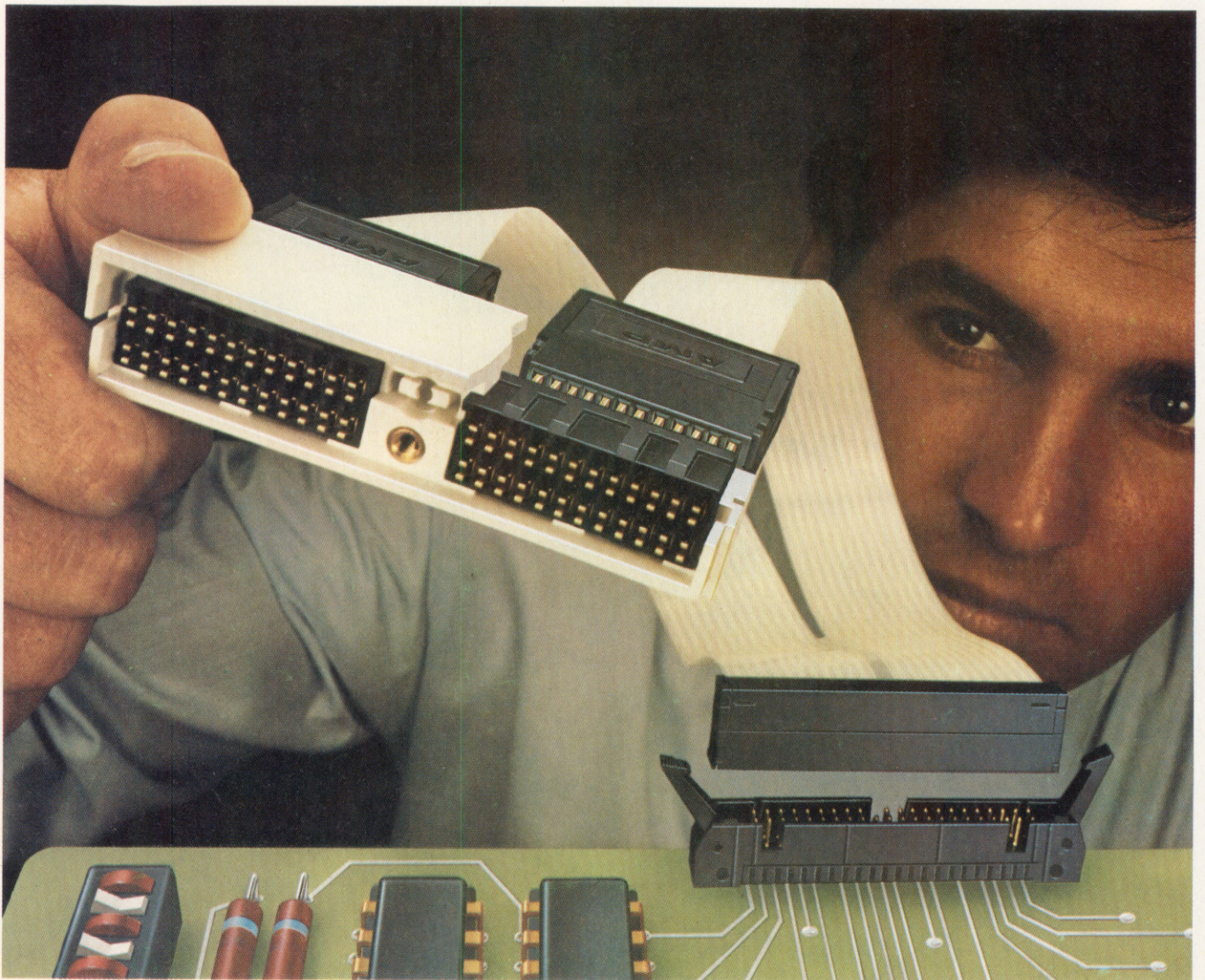


**"AMP has revolutionized
transmission cable interconnects
with low-cost assemblies."**



AMP transmission cable assemblies feature our unique solderless connector. So you don't need expensive high temperature cables.

Its mass termination design handles 100, 95, 75 and 50 ohm cables with signal conductors on .050" centers. Automatically commons the grounds to your specified pin out.

Physically separates and electrically isolates grounds from signal conductors. And allows us to offer you the most economical assemblies on the market.

All AMP transmission cable assemblies are equally cost and performance effective—and are available in different interconnect configurations to match your requirements.

The header receptacle, on .100 x .100 inch grid, is ideal for use with our

universal vertical or right angle eject headers. It comes in 10 through 50 positions, with or without center polarization.

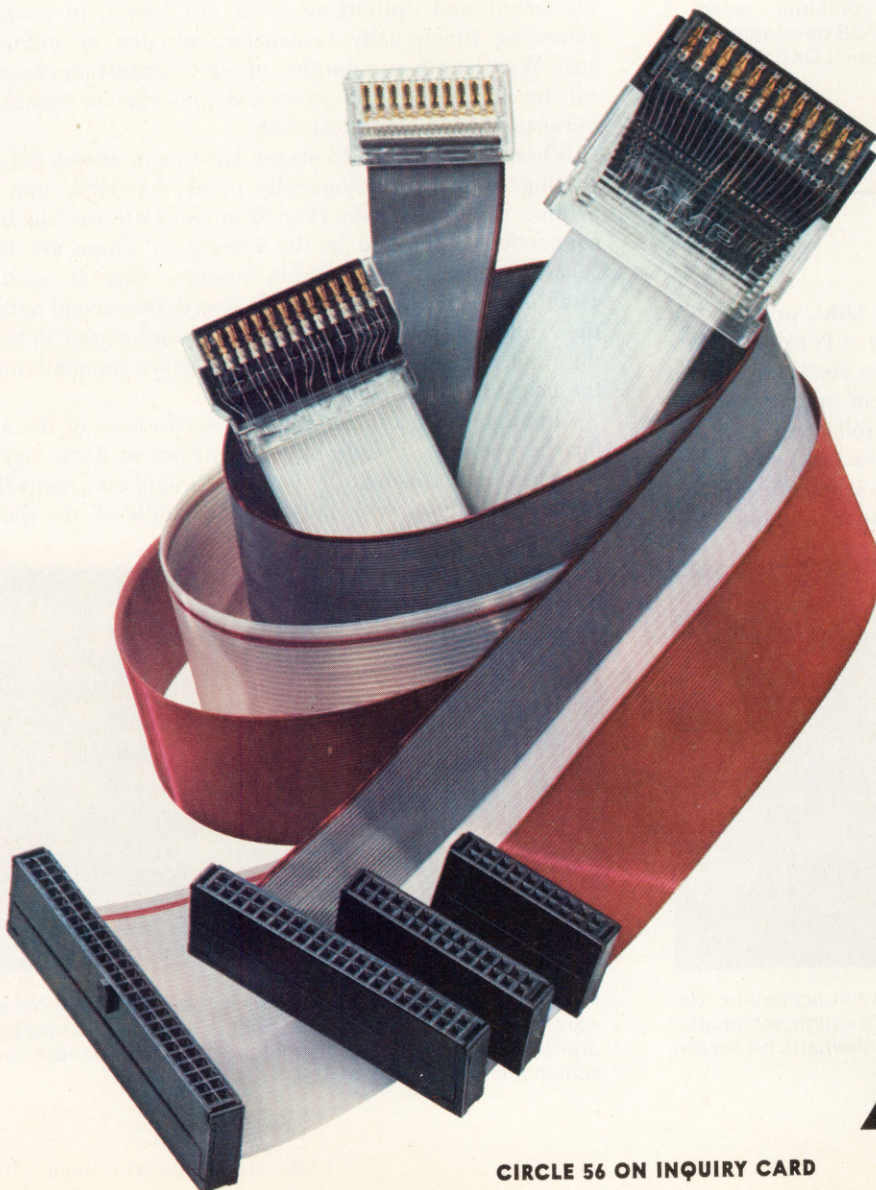
The pinfield style, which mates to backplane posts on .100 x .100 inch grid, is stackable end-to-end or side-by-side. Post stops are optional to permit wrap-type interconnects on posts.

The SLT style, a 24-position unit with .125 x .250 inch spacing, interconnects with industry standard computer interface connectors.

For full details, call the Transmission Cable Assembly Information Desk (717) 780-8400. Or write us. AMP Incorporated, Harrisburg, PA 17105.

AMP is a trademark of AMP Incorporated.

AMP has a better way.



Some facts worth knowing about AMP Transmission Cable Assemblies

Mechanical

Mating Force.	8 oz. max./contact
Unmating Force.	1½ oz. min./contact
Mating and Unmating.	200 cycles
Vibration.	15 G's, 10-2000 Hz
Physical Shock.	100 G's, 6 millisecc

Electrical

Current.	1.0 ampere max./contact
Contact Resistance.	25 milliohms max.
Insulation Resistance.	5000 megohms min.
Dielectric Withstanding Voltage.	500 volts RMS (sea level)

Environmental

Temperature.	-65°C to 105°C
Thermal Shock.	5 cycles: -65°C to 105°C
Moisture Resistance.	10 days, 25°C to 65°C, 80-98% R.H.
Salt Spray.	5% solution, 48 hours
Industrial Gas.	10% SO ₂ , 24 hours

CIRCLE 56 ON INQUIRY CARD

AMP