

SSK

AMSD

AMSD

ALPHA MICRO SERVICE DIVISION

JOURNAL

AUGUST 1980

TABLE OF CONTENTS

Hardware Volume

6.1.43 Time/Date Modification

File under Section VI, AM-1000 Systems.

14.1.14 Twenty Megabyte Configuration for the Workstation

File under Section XIV, Workstation.

alpha micro

Service, Support and Education

A.M.S.D. JOURNAL

Volume 8, Number 8, August 1986

Editor.....Nancy Steen

Contributors to this issue.....Jeff Kreider,
Steve Albin, and Art Silverstein.

Copyright 1986 by Alpha Microsystems.

Alpha Micro, AMOS, AlphaBASIC, AlphaPASCAL,
AlphaLISP, AlphaVUE, AlphaACCOUNTING, AlphaRJE,
and AMTEC are trademarks, and AlphaCARE and
AlphaSERV are service marks of Alpha
Microsystems.

The A.M.S.D. Journal is published monthly by
Alpha Micro Technical Services. Please address
all correspondence to A.M.S.D. JOURNAL, Alpha
Microsystems, 3501 Sunflower, Santa Ana, CA
92704.

Alpha Micro has checked the information
contained in this newsletter and believes it to
be accurate at the time of publication.
However, readers should independently determine
that any information used works correctly on
their system and is appropriate for their
application.

=====

A.M.S.D. Telephone Numbers

Customer Service	(714) 641-7602
Customer Education	(714) 641-6330
Technical Support	(714) 641-7608
Main Switchboard	(714) 957-8500
Spare Parts/Logistics	(714) 641-6339
AMTEC	
(1200 Baud Bell 212A)	(714) 545-2290
AMTEC	
(300 Baud Bell 103)	(714) 545-8546

NEW PATCH NOTICES

The following **AMOS/L** Patches have been released and are now available to Master License Package holders and subscribers.

SPN-180L-00 Version 1.3 - This patch corrects a problem where OPEN-APPEND was not handled in a manner consistent with other OPENS in RUN. This inconsistency caused the keyword WAIT'FILE to malfunction.

SPN-187L-00 Version 1.3I, 1.3A - This patch corrects a problem where the buffer size is not large enough for 70MB Fujitsu drive. It makes the buffer size dependent on the size of the drive.

SPN-188L-00 Version 1.3B - When used with AM355.IDV or AM350.IDV, register D3 would sometimes be corrupted. This Patch ensures that D3 is saved.

SPN-194L-00 Version 1.3, 1.3A, 1.3B - This patch corrects a problem with TCRT 129.

SPN-198L-00 Version 1.3B - This patch extends addressing to 32 bits.

The following **AlphaCALC** Patches have been released and are now available to Master License Package holders and subscribers.

SPN-185L-00 Version 1.2 to CALC.LIT. This patch corrects "IF" statements using "EXTCELL", "NPV", "LOOKUP" and "REG" functions.

SPN-195L-00 Version 1.2 to CALC.LIT. This patch corrects problems in SORT command, Stack Space, and EXTCELL.

The following **MULTI** Patches have been released and are now available to Master License Package holders and subscribers.

SPN-193L-00 Version 1.0 to WINDOW.TDV. This patch corrects a problem in MULTI where TCRT 129 calls would generate incorrect results causing display problems with the status line.

The following **AlphaWRITE** Patches have been released and are now available to Master License Package holders and subscribers.

SPN-181L-00 Version 1.2 - WRT100.OVR. This patch corrects a problem when adding/editing margin to a footnote which can cause system to hang.

SPN-182L-00 Version 1.2 - WRITE.LIT. This patch corrects four problems; data loss when text added to end of footnote, TABs added during formatting in presence of hyphenated words, .OVR files loaded into system memory, and RUBOUT key deleting footnote information blocks.

SPN-183L-00 Version 1.2 - WRT170.OVR. This patch corrects a problem with the AM-302 justifying a proportionally spaced line which was longer than normal.

SPN-184L-00 Version 1.2 - WRT200.OVR. This patch corrects a problem in which if the last word in a document is misspelled and there is no carriage return after the "SPELL", the system will hang.

SPN-191L-00 Version 1.2 - WRT170.OVR. This patch corrects a failure to print one page at a time and fixes a problem with proportional spacing when /TITLE and /FOOTER lines are used.

SPN-192L-00 Version 1.2 - WRT150.OVR. This patch corrects a problem with premature page breaks when using the /CPAGE command.

SPN-194L-00 Version 1.2 -DVR: AM62A.TDV. This patch corrects a problem with TCRT 129.

6.1.43 Time/Date Modification

It has been reported that several AM-1000 series computers will occasionally power on with the wrong time or date. If your system does not maintain the correct date or time once set and the system is left running this modification will not correct your problem. Since this is due to a power up condition it will not occur in all systems. The most prevalent symptom is to change the year to 1908 or 1906, however, it may change other portions of the date or time also.

This modification will eliminate the changing of the date or time if this is the problem with your AM-1000. If this does not correct your problem, some other suggestions are to check the backup battery to make sure it is charged and check CR5 and CR6 for proper operation.

If your system loses the date or time while in operation, it may be due to a defective clock/calender IC or defective oscillator, XY4, or defective interfacing and addressing logic or software writing to the wrong I/O port address.

This modification will change the revision of your AM-167 logic PCB from revision A-14 to A-15 or B-15 to B-16 or D-19 to D-20 for 128K or 256K or D21 to D22 for 512K based.

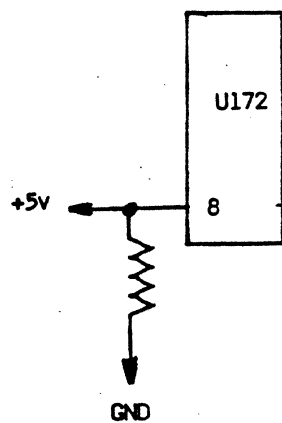
Please note there is no revision C artwork.

The easiest way to implement this change is to modify the clock/ calender IC and replace it as a module. Figure A shows an example of the modified clock/calender IC. Please note, after replacing the IC you will have to reset the date and time to correct them and then reboot the system to correct the system "uptime" counter.

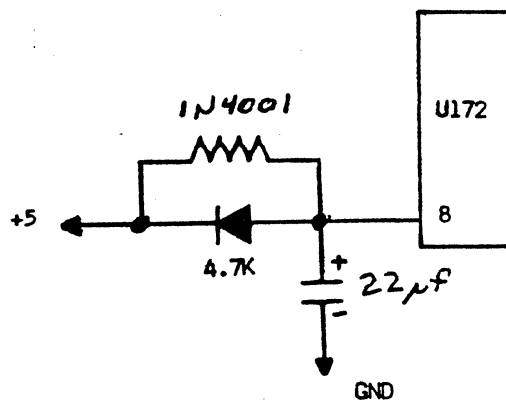
PROCEDURE:

1. Unmount all drives and power off system.
2. Remove the clock/calender IC located near the right front corner of the system and marked U-172. This is a socketed IC.
3. If you have a clock/calender IC that you have previously modified and tested, proceed to step 8.
4. Extend pin 8 of the clock/calender IC, U-172 90 degrees from its original position and pointing away from the IC's body.
5. Add a 4.7K resistor from U-172 pin 1 to U-172 pin 8.
6. Add a diode, 1N4005, from U-172 pin 1 to U-172 pin 8. The cathode (striped end) should point to U-172 pin 1.
7. Add a 22UFD capacitor from U-172 pin 8 to U-172 pin 13.
8. Install modified clock/calender IC into AM-167 at location U-172 making sure of pin orientation.
9. Power on the system and log to the operator account.
10. Using the TIME and DATE commands set the proper time and date.
11. Unmount all drives and power off the system.
12. Power on the system and run STAT. The date and time should be correct and the system "uptime" should also be correct.

* See Figure A for modified clock/calender IC physical layout.



WAS



IS

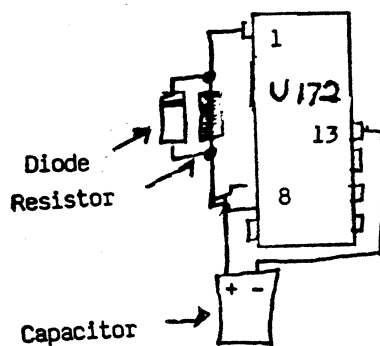


FIGURE A

14.1.14 Twenty Megabyte Configuration for the Workstation

Recently, a dealer desired to configure an Alpha Micro Workstation to contain a 20 megabyte drive. He diligently did his homework and found in the Workstation documentation (12-13) that the Workstation will support one type of 20MB drive...the NEC. So he promptly went out and bought a NEC 20MB drive just as the manual stated. He installed it but, the drive would not respond to the system in any way. He contacted AMSD to see if we could bring the drive up over the phone. Our efforts were futile. We asked if this dealer would be so kind and patient as to send in the drive. He agreed.

In looking at the drive, we were surprised to see that the drive was half height. We knew the only drive that worked in the Workstation was a full height yet, this was a NEC 20MB drive. Once again our efforts, upon installing the drive in an in-house machine, failed. We contacted the manufacturers of this particular

drive to see if they still produced a full height 20MB. The product had become obsolete. To return the drive NEC charges a \$200.00 "restocking fee", not to mention this dealer's time and money spent trying to make this 20MB drive (half height) useful.

Documentation states that the Workstation will only support a NEC 20MB drive. The purpose of this article is to take that narrow description, and narrow it down even more. The standard Workstation with its standard controller, will only support a NEC 20MB FULL HEIGHT, 8 head, 310 cylinder...drive. The part number for that drive is NECD5244.

To use the Workstation in a 20MB environment make sure the drive meets all of the specifications mentioned above. If you have any questions call Alpha Micro Technical Support at (714) 641-7608.

SECTION VI - HARDWARE (Continued)

6.1 AM-1000 (Continued)

- 6.1.37 AM-1000 Improved Self-test Status Display Codes
- 6.1.38 AM-1000 Series Compatibility
- 6.1.39 AM-1000X Noise Modification
- 6.1.40 AM-1004 Installation Instructions
- 6.1.41 AM-1000 and AM-1004 Memory Increases
- 6.1.42 AM-1000 System Power Supply Ratings [May 86]
- 6.1.43 Time/Date Modification [August 86]

SECTION XIV - HARDWARE

14.0 Workstation

- 14.1.1 Alpha Micro Workstation
- 14.1.2 Serial Printer Cable for the Alpha Micro Workstation.
- 14.1.3 Parallel Printer Cable for the Alpha Micro Workstation.
- 14.1.4 AM-84-02 Memory Expansion Board Switch Settings.
- 14.1.5 IBM Compatible Serial Port on the Workstation
- 14.1.6 SHIPDISK Utility on the Workstation
- 14.1.7 Workstation Mother Board Modification
- 14.1.8 Alpha Micro Workstation Color Board Modification
- 14.1.9 TOD Year Patch for MS-DOS
- 14.1.10 Revised TOD (Time of Day) Program
- 14.1.11 Serial Printer Cable for the AM Workstation and IBM/XT
- 14.1.12 CALC and WRITE Overlay for the PC Series
- 14.1.13 Alpha Micro Serial I/O Port to IBM Compatible Serial Board
- 14.1.14 Twenty Megabyte Configuration for the Workstation [8/6]