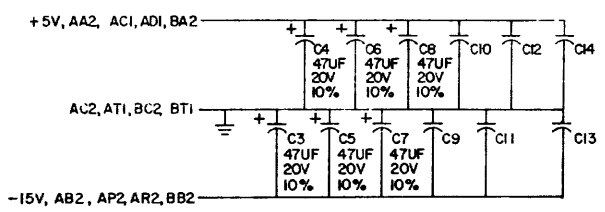
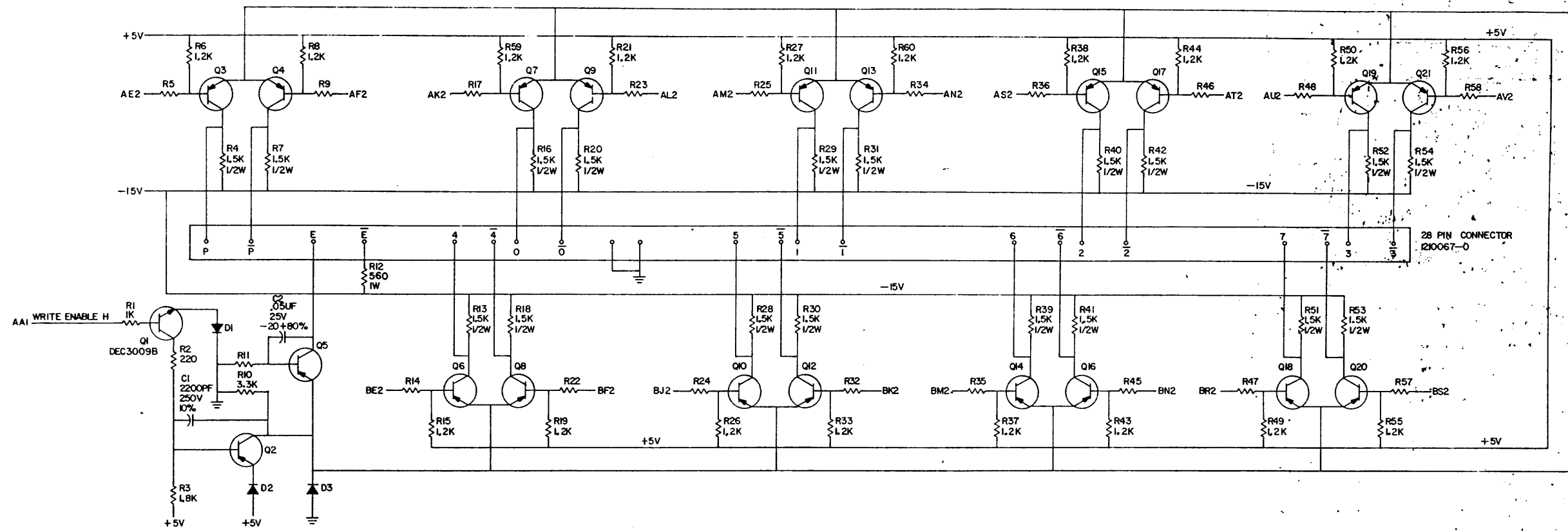


THIS SCHEMATIC IS FURNISHED ONLY FOR TEST AND MAINTENANCE PURPOSES. THE CIRCUITS ARE PROPRIETARY IN NATURE AND SHOULD BE TREATED ACCORDINGLY. COPYRIGHT 1970 BY DIGITAL EQUIPMENT CORPORATION.



UNLESS OTHERWISE INDICATED:
RESISTORS - 680, 1/4W, 5%
CAPACITORS - .01UF, 100V, 20%
TRANSISTORS - 2N2904A
DIODES - D672

REVISIONS CHEG NO. REV. 1/10001 D DATE 10/00/68 BY J. W. MOORE EDWARD TELLO DATE 12/15/70	DATE 12/15/70 BY W. MOORE	TRANSISTOR & DIODE CONVERSION CHART		digital EQUIPMENT CORPORATION MAYFIELD, MASSACHUSETTS	TITLE HEAD I VER G350 PART CODE D CS NUMBER G350-0-1 PRINTED CIRCUIT NO. D	
	DEC 684 DEC 3009B	EIA 2N3604 2N3008B	DEC 2N2904 SAME			REV. E
	DATE DATE	DATE DATE	DATE DATE			DATE DATE
	DATE DATE	DATE DATE	DATE DATE			DATE DATE

REV. E
 NUMBER G350-0-1
 PART CODE D CS

Pink