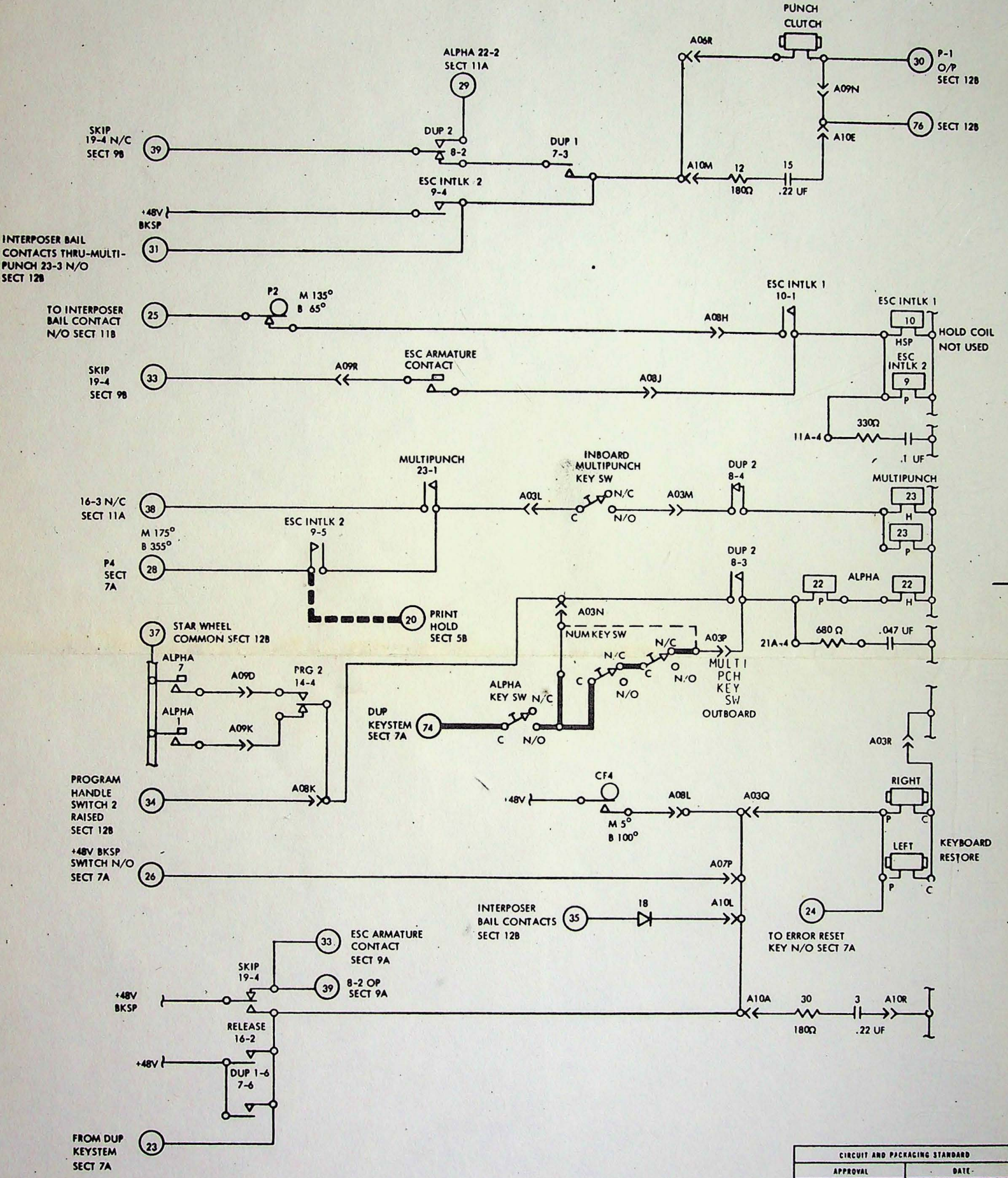


5405918

STANDARD CODE

CARD CODE

MOD "A" & "C"
PUNCH CLUTCH-MULTI PCH-ALPHA-KEYBOARD RESTORE



NOTES
 X PRINT TO ENG SPEC NO 895291
 X POINT TO POINT WIRING FOR +48V AND "0" VOLT NETS SHOWN ON REF PAGE

CIRCUIT AND PACKAGING STANDARD	
APPROVAL	DATE

INTERNATIONAL BUSINESS MACHINES CORP.				DATE	CHANGE NO.	APPROVAL	DATE	CHANGE NO.	APPROVAL	DEVELOPMENT NO.
NAME				11OCT68	206435					5405918
PCH CLUTCH-MP-ALPHA-KYBD RES										
DESIGN	AG	95EP66	MODEL							
DETAIL			SCALE							
CHECK	RAS	95EP66	DRAW	IDI	11AUG68					
APPRO	FJH	95EP66	CHECK							

C

5405977

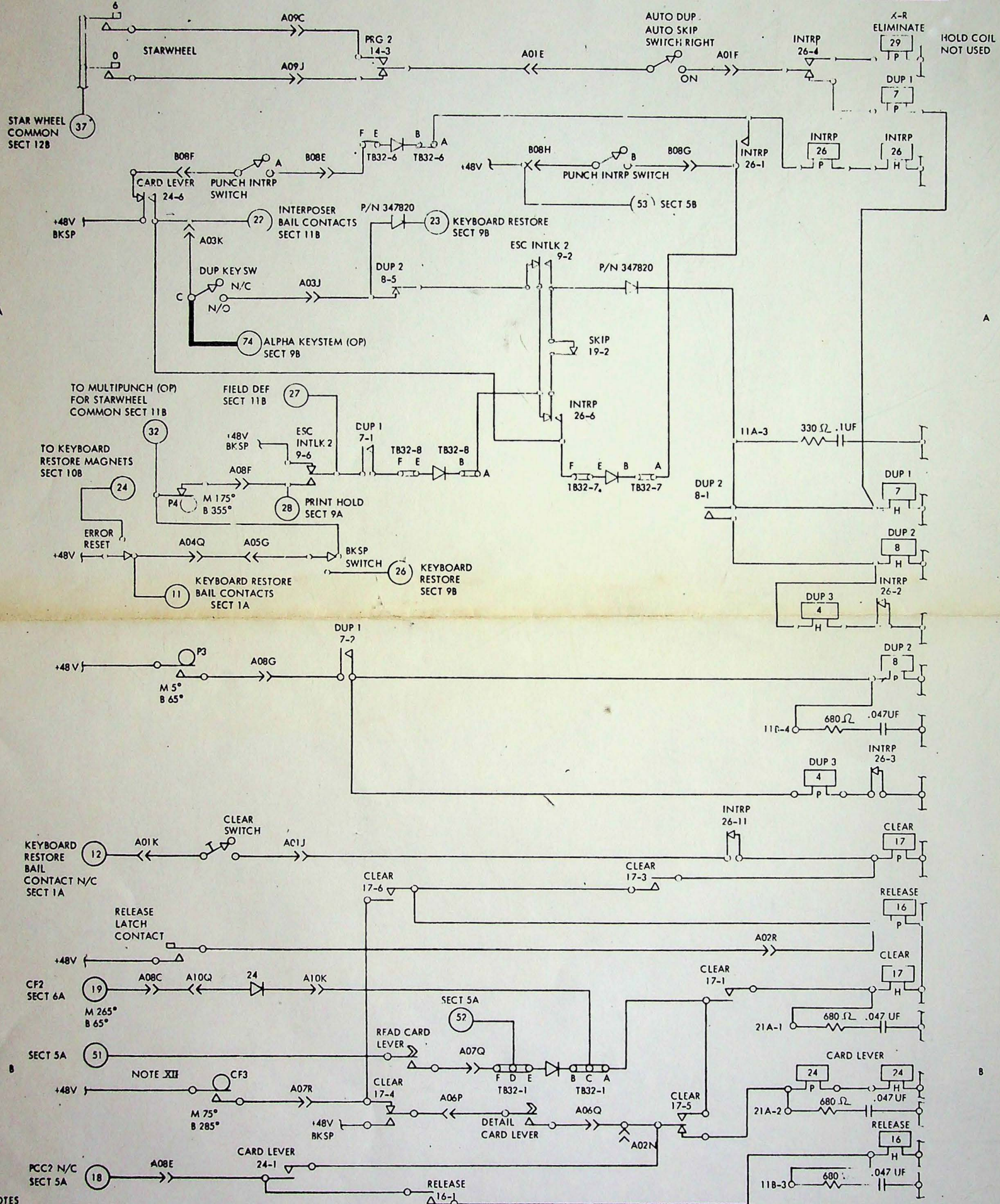
STANDARDS CODE

7

MOD "C" DUP-CLEAR-RELEASE-CARD LEVER

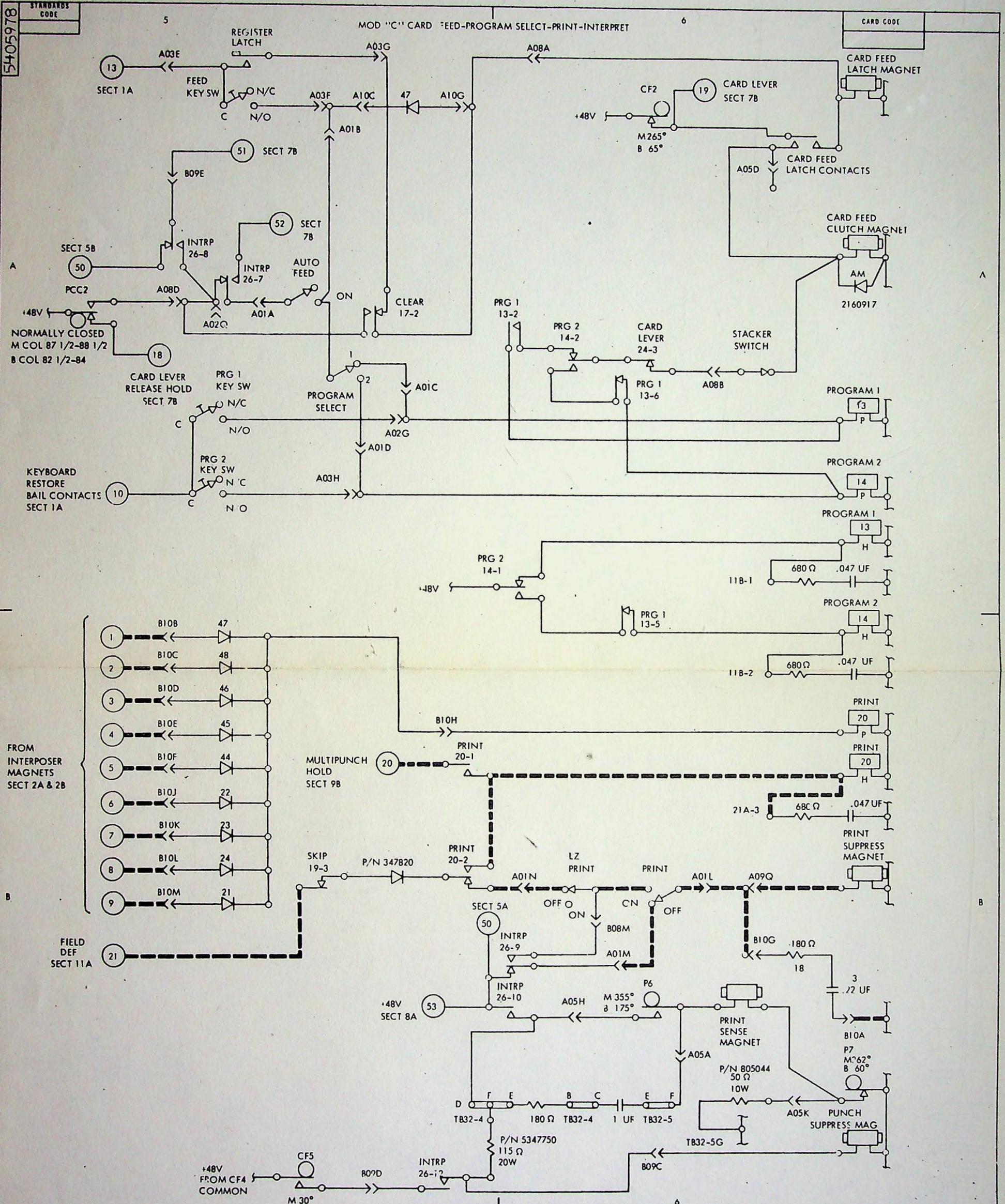
8

CARD CODE



- NOTES
- X PRINT TO ENG SPEC NO 895291
 - XI POINT TO POINT WIRING FOR +48V AND "0" VOLT NETS SHOWN ON REF PAGE
 - XII CF 3 TIMING FOR VLCD AND/OR HSS M90° ± 2° B300° ± 5°

INTERNATIONAL BUSINESS MACHINES CORP.				DATE	CHANGE NO.	APPROVAL	DATE	CHANGE NO.	APPROVAL	DEVELOPMENT NO.
NAME				11OCT68	206435					5405977
SYSTEMS DIAGRAM										
DUP-CLEAR-REL-CD LEVER										
DESIGN	AG	9SEP66	MODEL							
DETAIL	RAS	9SEP66	SCALE							
CHECK	FJH	9SEP66	DRAW	101	1 AUG 68					
APPRO			CHECK							



NOTES
 X PRINT TO ENG SPEC NO B95291
 XI POINT TO POINT WIRING FOR +48 AND "0" VOLT
 NETS SHOWN ON REF PAGE

INTERNATIONAL BUSINESS MACHINES CORP.				DATE	CHANGE NO.	APPROVAL	DATE	CHANGE NO.	APPROVAL	DEVELOPMENT NO.
NAME				11 OCT 68	206435					
CD FEED-PRG SEL-PRINT-INTERPRET										
DESIGN	AG	9SEP66	MODEL							
DETAIL			SCALE							
CHECK	RA3	9SEP66	DRAW	IDI	1 AUG 68					
APPRO	FJF	9SEP66	CHECK							

C

5405978

5406602

MOD "C"
29 WIRING DIAGRAM INDEX

NAME	SECTION	PART NUMBER
POWER SUPPLY 60 CYCLE		5373568
POWER SUPPLY 50 CYCLE		5373567
NUM KYBD-INTERPOSER MAG-PIN SENSE	1 & 2	5405977
64 CHARACTER KEYBOARD	3 & 4	5405944
CARD FEED-PROG SELECT-PRINT	5 & 6	5405978
DUP-CLEAR-RELEASE-CARD LEVER	7 & 8	5405977
PCH CLUTCH-MP-ALPHA-KYBD RESTORE	9 & 10	5405918
SKIP-ESCAPE MAG	11 & 12	5405975
COMPONENT LOCATION	13 & 14	5405976
KEYBOARD AND CAM REFERENCE		5373561
PRINT -SMS CARD		375105
ARC SUPP -SMS CARD		375233
COMBINATION KYBD CODE CHART		5367164
NUMERIC KYBD CODE CHART		5367184

FOR ENGINEERING USE

NOTES

- XI PART NUMBERS 5406601 THRU 5406650 ARE RESERVED FOR MODEL "C" INDEX PAGES (ENG NOTE)
- XII LAST BALLOON USED (76) NOT USED; 40-49; 55-73 & 75 (ENG NOTE)

PREVIOUS ASSIGNED PAGE(S) PART NUMBER(S)

INDEX PAGE(S) P N 5406601
 LOGIC PAGE(S) P N 5405914, 5405973, 5405974
 REPLACED BY PART NUMBER(S) 5405918, 5405977, 5405978

INTERNATIONAL BUSINESS MACHINES CORP.				DATE	CHANGE NO.	DATE	CHANGE NO.	NOTE	DEVELOPMENT NO.
NAME	SYSTEMS DIAGRAM			11OCT68	206435			X PRINT TO ENG. SPEC. NO. 895291	5406602
	W D INDEX								
DESIGN	AG	7/1/68	MODEL						
CHECK	RAS	7/1/68	DRAW	idi	12JUL68				
APPRO	FJH	7SEP68	CHECK						

G. B. CO. INC. 44411

5406601

MOD "C"
29 WIRING DIAGRAM INDEX

NAME	SECTION	PART NO
POWER SUPPLY 60 CYCLE		5373568
POWER SUPPLY 50 CYCLE		5373567
NUM KYBD - INTERPOSER MAG - PIN SENSE	1 & 2	5405972
64 CHARACTER KEYBOARD	3 & 4	5405944
CARD FEED - PROG SELECT - PRINT	5 & 6	5405973
DUP - CLEAR - RELEASE - CARD LEVER	7 & 8	5405974
PCH CLUTCH - MP - ALPHA - KYBD RESTORE	9 & 10	5405914
SKIP - ESCAPE MAG	11 & 12	5405975
COMPONENT LOCATION	13 & 14	5405976
KEYBOARD & CAM REFERENCE		5373561
PRINT - SMS CARD		375105
ARC SUPP - SMS CARD		375233
COMBINATION KYBD CODE CHART		5367164
NUMERIC KYBD CODE CHART		5367184

FOR ENGINEERING USE

PREVIOUS ASSIGNED PAGE(S) PART NUMBER(S)
 INDEX PAGE(S) P/N NO CHANGE

LOGIC PAGE(S) P/N 375106

REPLACED BY PART NUMBER(S) 375233

NOTES

XI PART NO'S 5406601 THRU 5406650
 ARE RESERVED FOR MODEL "C"
 INDEX PAGES. (ENG NOTE)

XII LAST BALLOON USED (76)
 NOT USED; 40-49, 55-73 & 75 (ENG NOTE)

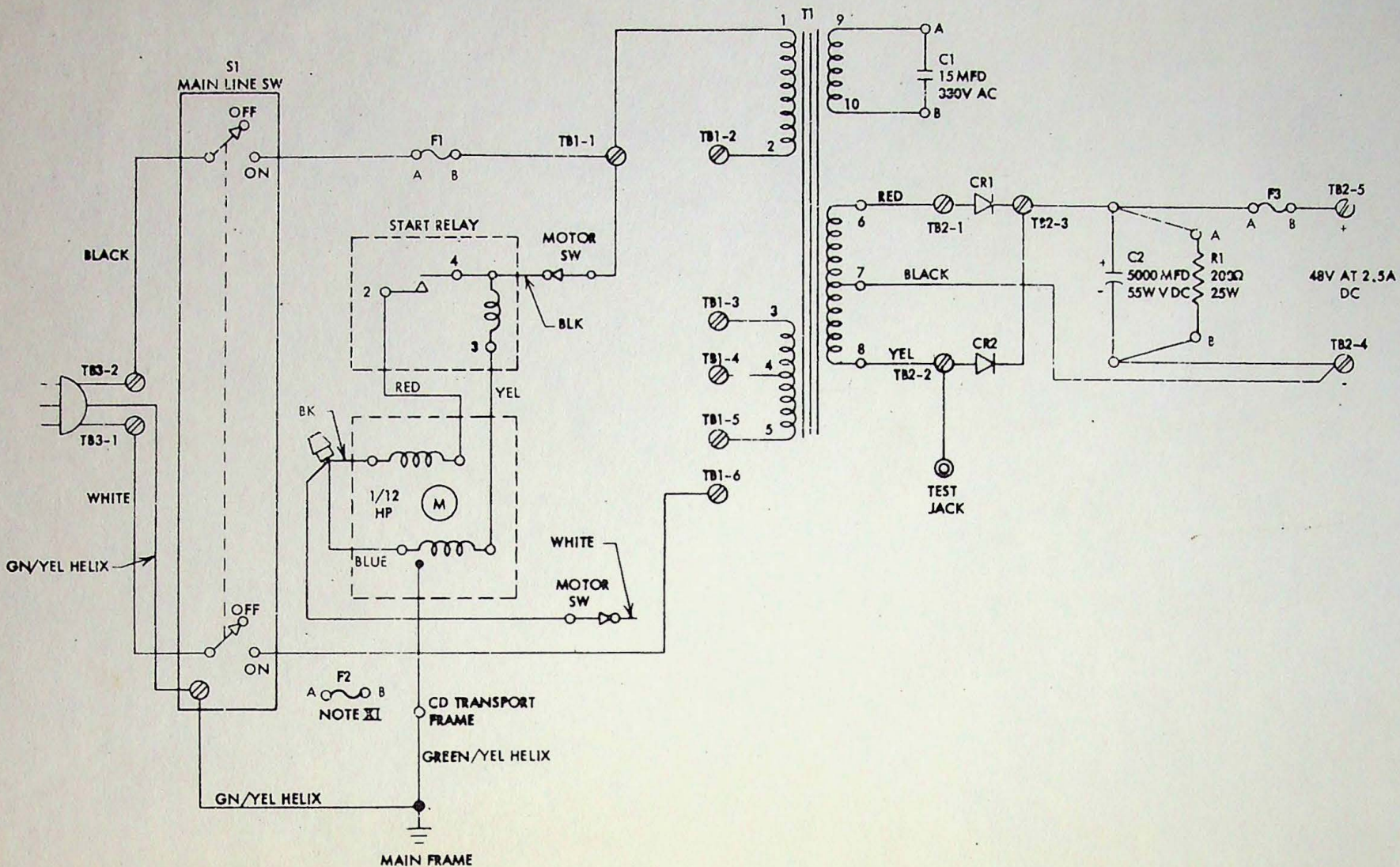
INTERNATIONAL BUSINESS MACHINES CORP.				DATE	CHANGE NO.	DATE	CHANGE NO.	NOTE	DEVELOPMENT NO.
NAME	SYSTEMS DIAGRAM			14 OCT 66	205772-G			X PRINT TO ENG. SPEC. NO. 895291	5406601
	W. D. INDEX			9 FEB 67	205842-A				
DESIGN	AG	9 SEP 66	MODEL	11 DEC 67	206154				
DETAIL									
CHECK	RAS	9 SEP 66	DRAW	G.T	1 SEP 66				
APPRO	FJH	9 SEP 66	CHECK						

5373568

POWER SUPPLY 60 CYCLE
48V AT 2.5A POWER SUPPLY

00.29.01.1

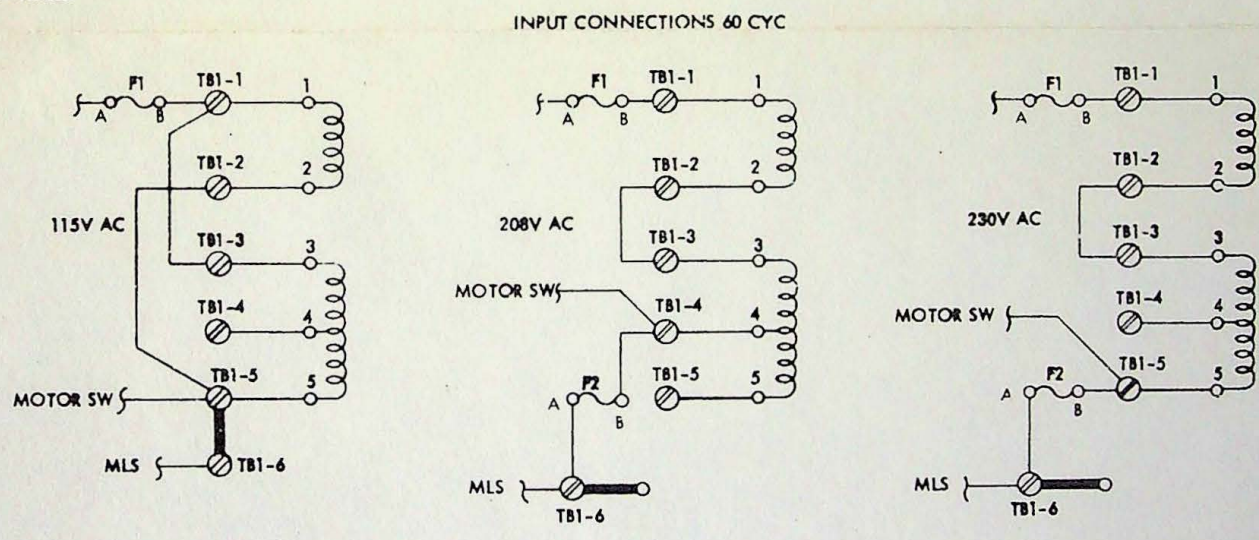
MASTER



NAME	PART NO.
T1	5404091
C1	1143069
C2	208222
CR1 2A	5404082
CR2 2A	5404082
R1	221110
S1	5972190

LONG TIME LAG FUSE			
FUSE	AMPS	PART NO.	VOLTS AC
F1	4.0	107665	115
F1	2.0	92734	200
F1	2.0	92734	230
F2	2.0	92734	200
F2	2.0	92734	230

FUSE	AMPS	PART NO.	VOLTS DC
F3	3	6324	48



NOTES
XI FOR 115V OPERATION F2 WILL NOT BE USED

INTERNATIONAL BUSINESS MACHINES CORP.		DATE	CHANGE NO.	DATE	CHANGE NO.	NOTE	DEVELOPMENT NO.
NAME		6-8-65	208329			NOTE X PRINT TO ENG. SPEC. NO. 893291	00.29.01.1
48V DC AT 2.5A		11 MAR 66	205542				
DESIGN	WT 5-4-65	MODEL					
CHECK	LF 5-4-65	DRAW	WJ 4-30-65				
APPRO	RLJ 5-4-65	CHECK					

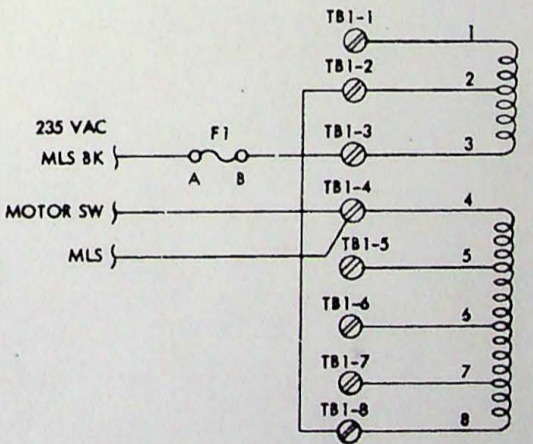
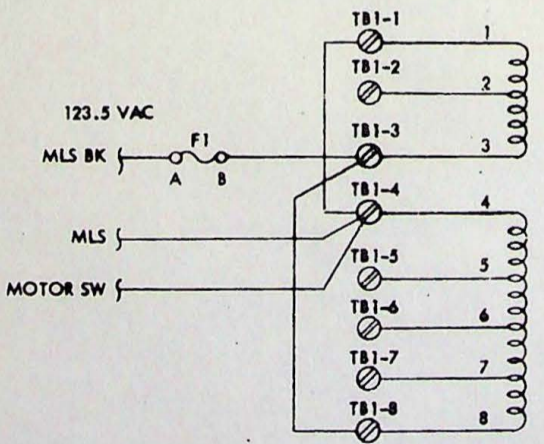
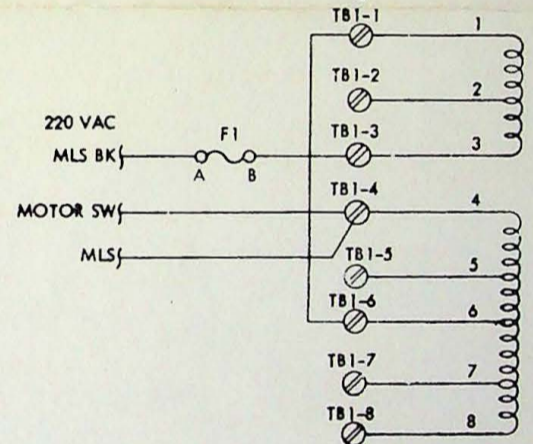
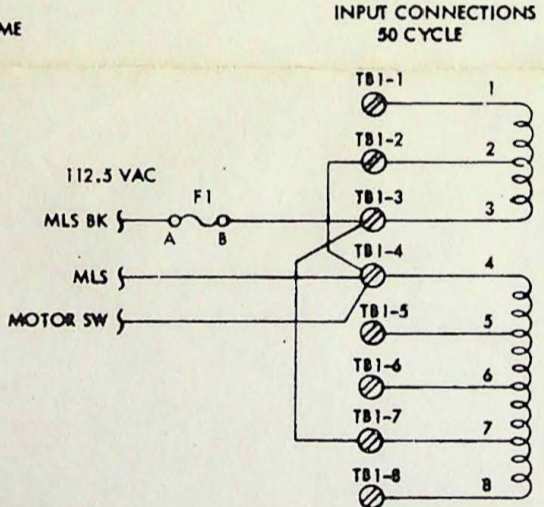
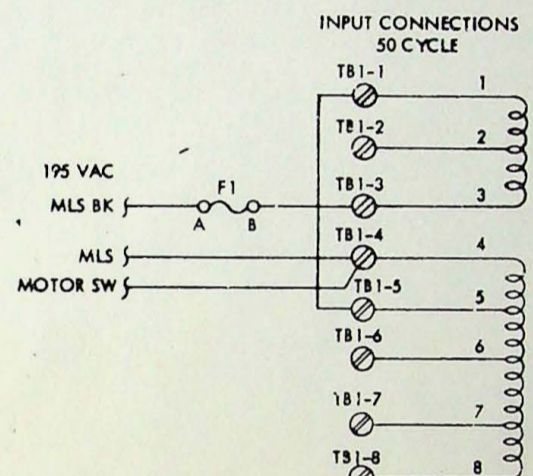
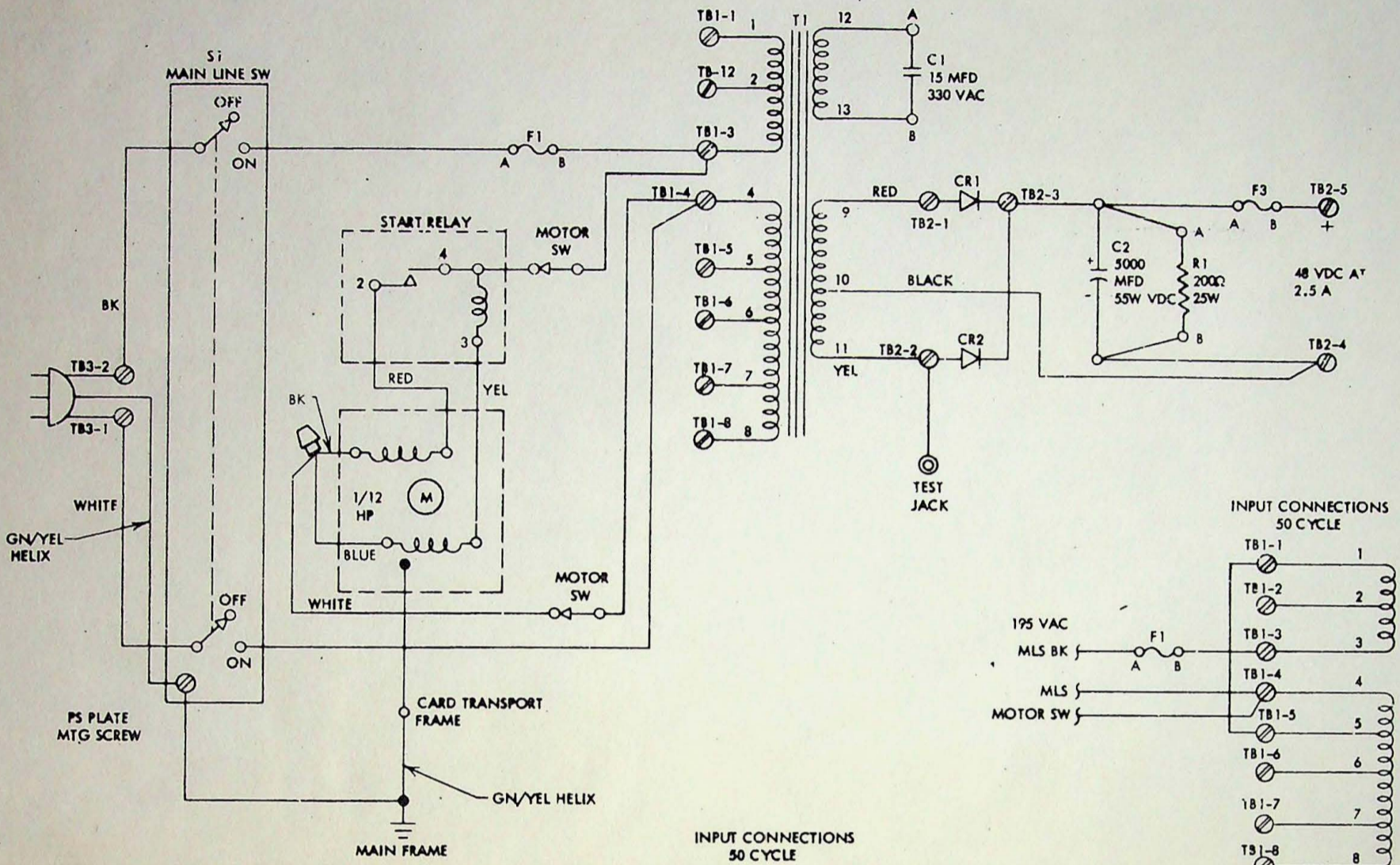
5373568

5373567

00.29.01.1

POWER SUPPLY 50 CYCLE
48V AT 2.5A POWER SUPPLY

MASTER



NAME	PART NUMBER
T1	5404096
C1	1143069
C2	208222
CR1 2A	5404082
CR2 2A	5404082
R1	221110
S1	5372190

LONG TIME LAG FUSE			
	AMPS	PART NO.	VOLTS AC
F1	4.0	107665	112.5
F1	4.0	107665	123.5
F1	2.0	92734	195
F1	2.0	92734	220
F1	2.0	92734	235

FUSE	AMPS	PART NO.	VOLTS DC
F3	3	6324	48

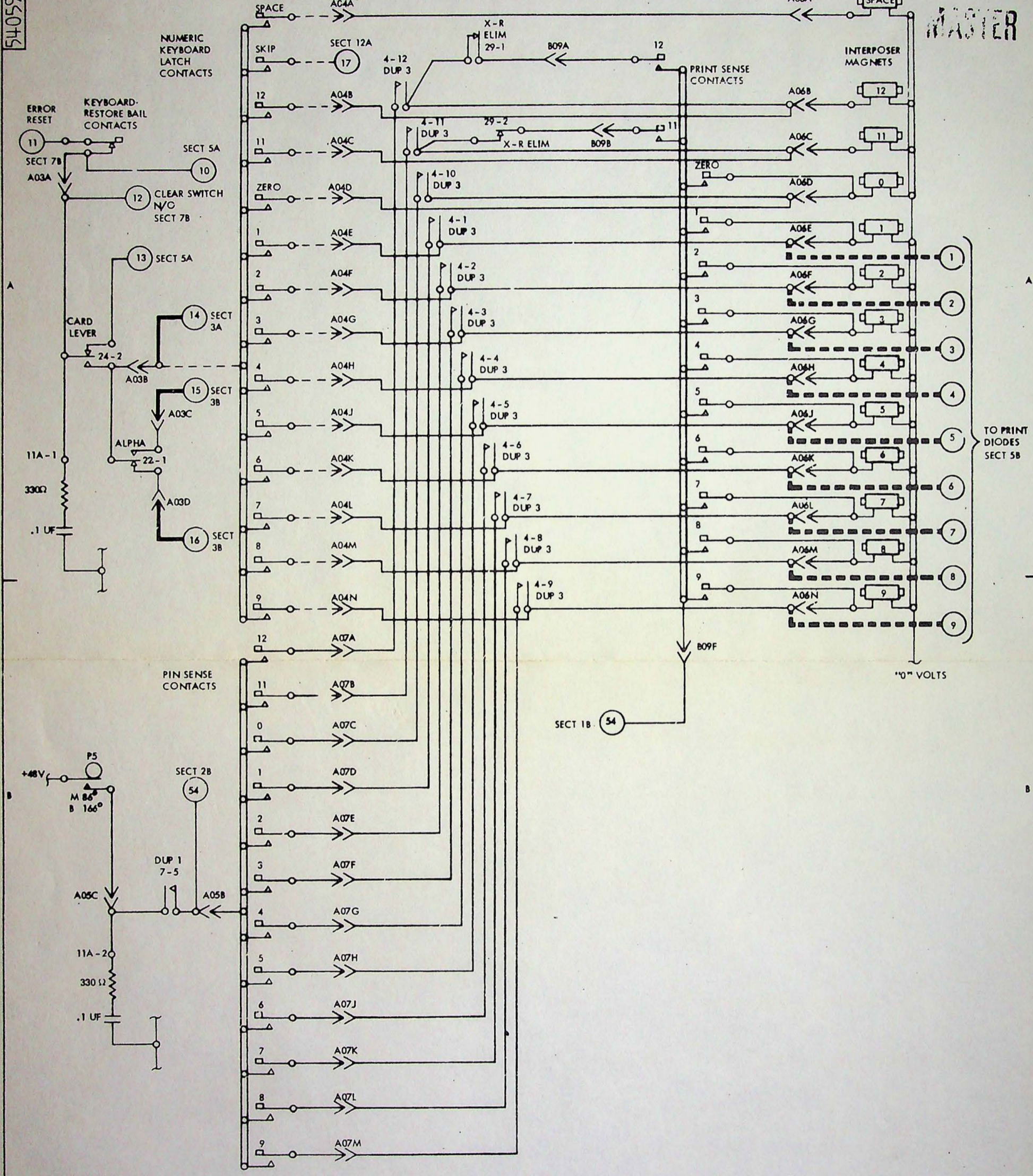
INTERNATIONAL BUSINESS MACHINES CORP.				DATE	CHANGE NO.	DATE	CHANGE NO.	NOTE	DEVELOPMENT NO.
NAME				6-8-65	205329			X PRINT TO ENG. SPEC. NO. 895291	00.29.01.1
WIRING DIAGRAM				11 MAR 66	205542				
DESIGN	WT	5-4-65	MODEL						
DETAIL									
CHECK	LF	5-4-65	DRAW	ldi	4-30-65				
APPRO	RLJ	5-4-65	CHECK						

5373567

5405972

MOD 'C'
NUMERIC KEYBOARD - INTERPOSER MAG - PIN SENSE AND PRINT SENSE

MASTER



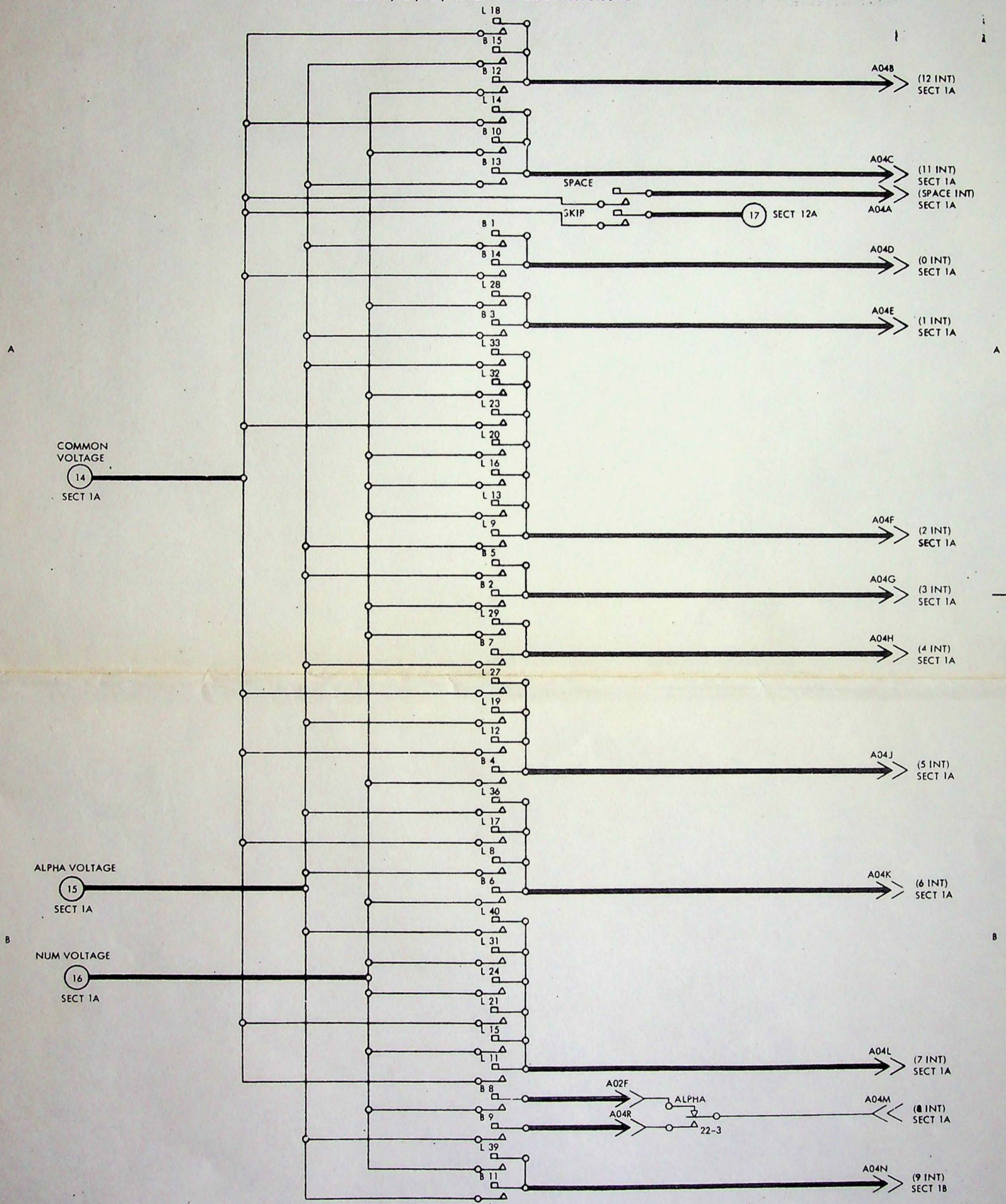
NOTES
 X POINT TO POINT WIRING FOR +48V AND "0" VOLT NETS SHOWN ON REF PAGE

INTERNATIONAL BUSINESS MACHINES CORP.		DATE	CHANGE NO.	DATE	CHANGE NO.	NOTE	DEVELOPMENT NO.
NAME	SYSTEMS DIAGRAM - NUM	14 OCT 66	20: 72-G			X PRINT TO ENG. SPEC. NO. 895291	
	KYBD-INT MAG-PIN SEN&PR SEN						
DESIGN	AG 9SEP66 MODEL						
DETAIL							
CHCK	RAS 9SEP66 DRAW GT 7SEP66						
APPRO	FJH 9SEP66 CHECK						

5405972

5405944

MOD "A", "B", "C", "10" & "11" 64 CHARACTER KEYBOARD

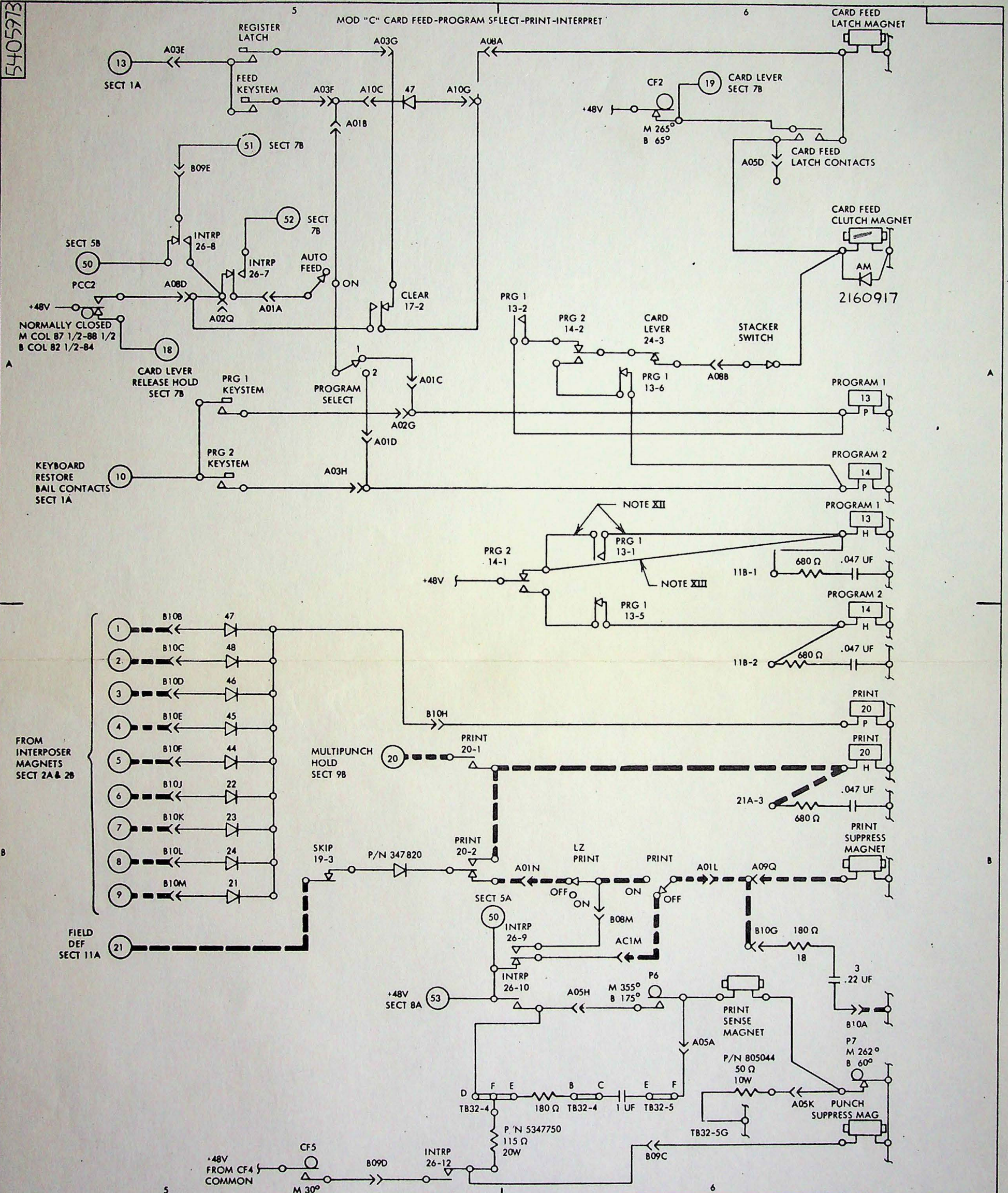


NOTES
 XI POINT TO POINT WIRING FOR -48V AND "0" VOLT NETS SHOWN ON REF PAGE

INTERNATIONAL BUSINESS MACHINES CORP.				DATE	CHANGE NO.	DATE	CHANGE NO.	NOTE	DEVELOPMENT NO.
NAME	SYSTEMS DIAGRAM			19 SEP 66	205636 - G			NOTE X PRINT TO ENG. SPEC. NO. 895291	
DESIGN	64 CHAR KYBD			18 OCT 66	205811-A				
DETAIL	EB	1 SEP 66	MODEL						
CHECK	RAS	9 SEP 66	DRAW	GT	7 SEP 66				
APPROQ	RSS	9 SEP 66	CHECK						

5405944

5405973

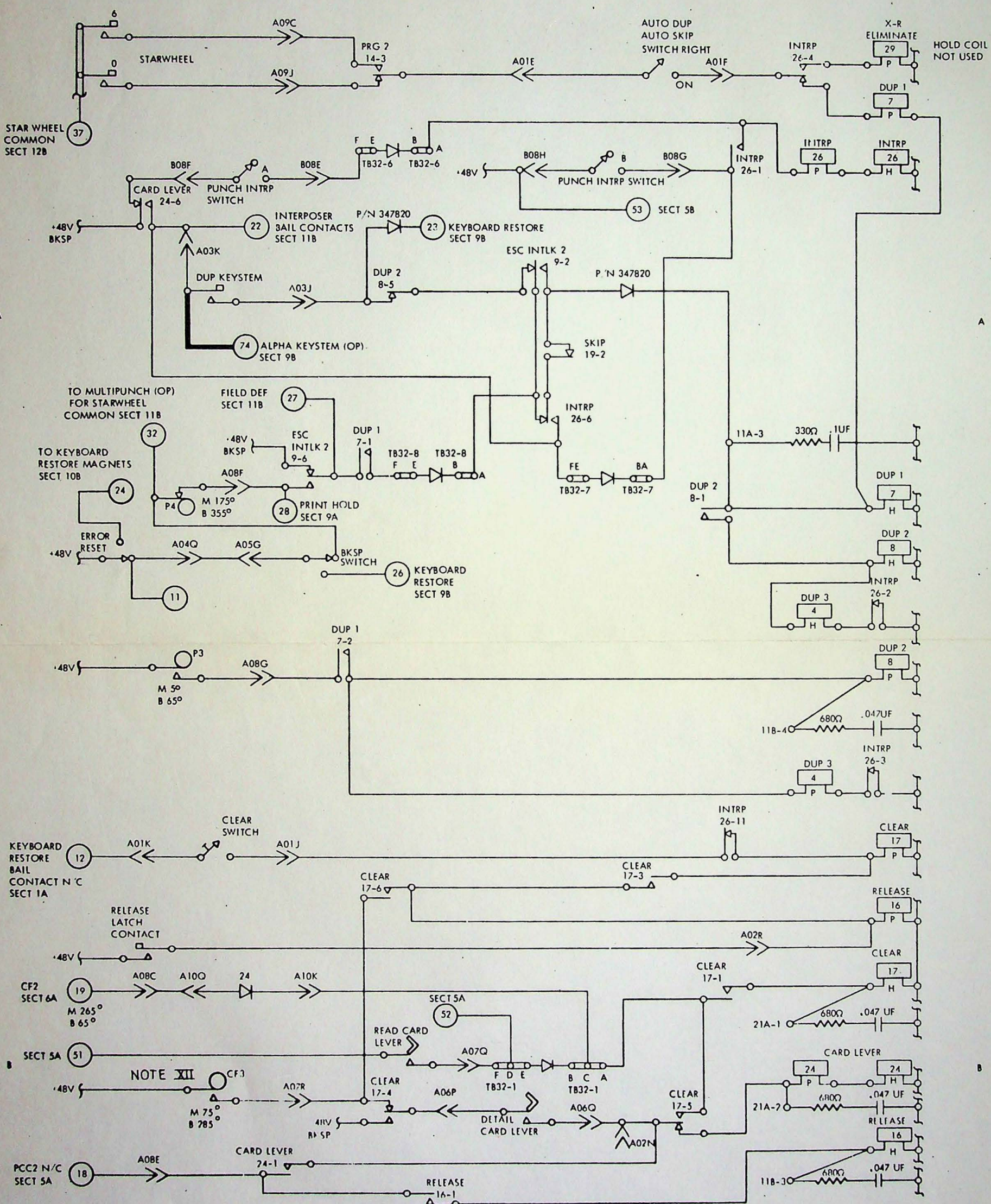


NOTES
 XI POINT TO POINT WIRING FOR +48V AND "0" VOLT NETS SHOWN ON REF PAGE
 XII FACTORY REMOVED ON EC 206154
 XIII FACTORY INSTALLED ON EC 206154

INTERNATIONAL BUSINESS MACHINES CORP.		DATE	CHANGE NO.	DATE	CHANGE NO.	NOTE	DEVELOPMENT NO.
NAME	SYSTEMS DIAGRAM	14 OCT 66	205772-G			X PRINT TO ENCL. OPNG. NO. 895291	5405973
	CD FEED-PRG SEL-PRINT-INTERPRET	9 FEB 67	205842-A				
DESIGN	AG 9SEP66						
DETAIL		22 DEC 67	206154				
CHECK	RAS 9SEP66						
APPRO	FJH 9SEP66						

5405974

MOD 'C' DUP-CLEAR-RELEASE-CARD LEVER

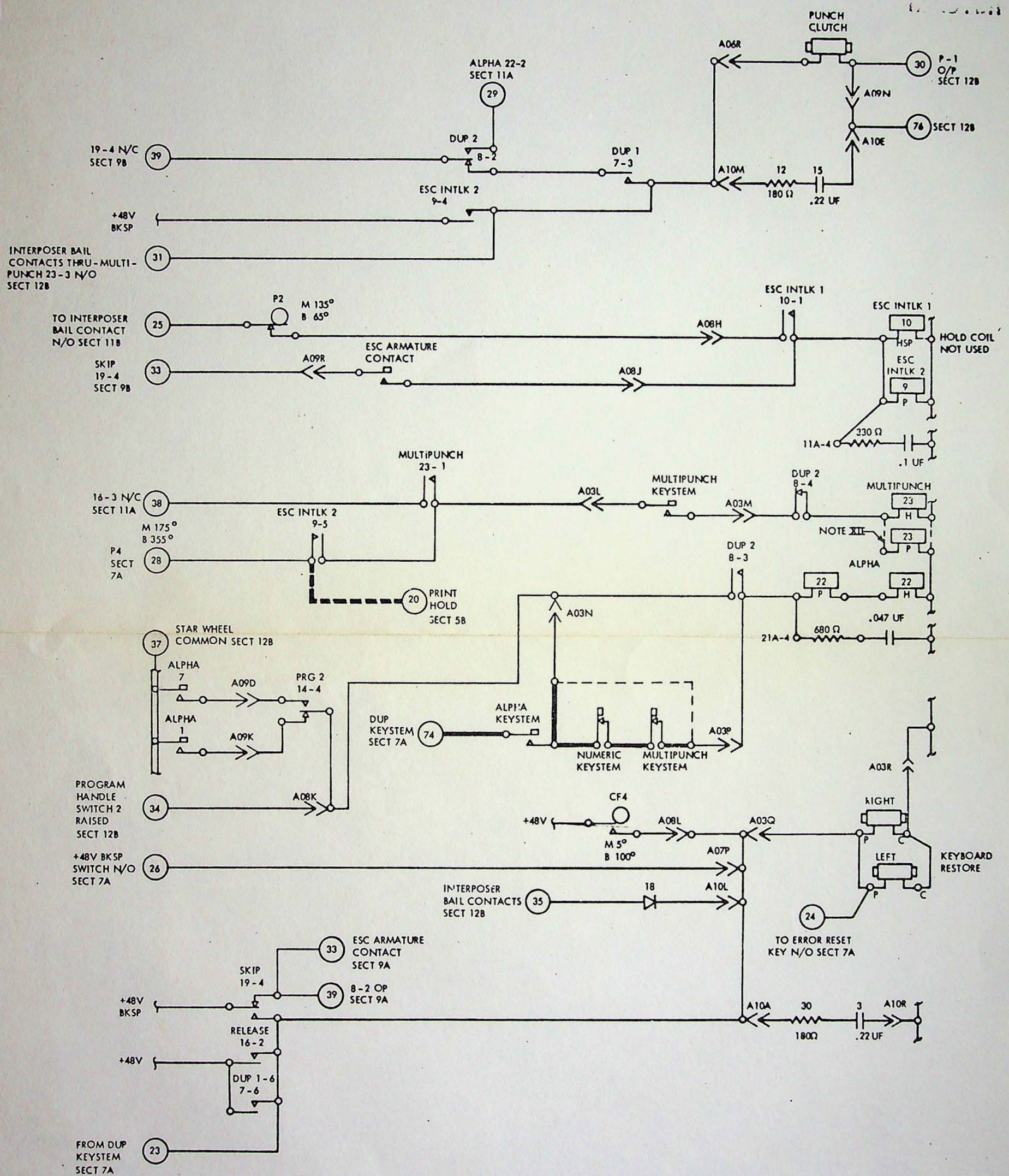


NOTES
 XI POINT TO POINT WIRING FOR .48V AND "0" VOLT NETS SHOWN ON REF PAGE
 XII CF3 TIMING FOR VLCD AND/OR H55 M90° ± 2° B 300° ± 5°

INTERNATIONAL BUSINESS MACHINES CORP.		DATE	CHANGE NO	DATE	CHANGE NO	NOTE	DEVELOPMENT NO.
NAME	SYSTEMS DATA-RAM	14 OCT 66	205772-G			NOTE PRINT TO ENG. BPG. NO. 895791	5405974
DESIGN	DUP-CLEAR-REL-CD LEVER	9 FEB 67	205842-A				
DETAIL	AG 951P64 MODEL	13 MAR 67	205980				
CHECK	RA3 95EP64 DRAW	27 MAR 67	205983				
APPRO	FJH 95EP64 CHECK	14 OCT 68	206435				

5405914

MOD "A" & "C"
PUNCH CLUTCH - MULTI PCH - ALPHA - KEYBOARD RESTORE



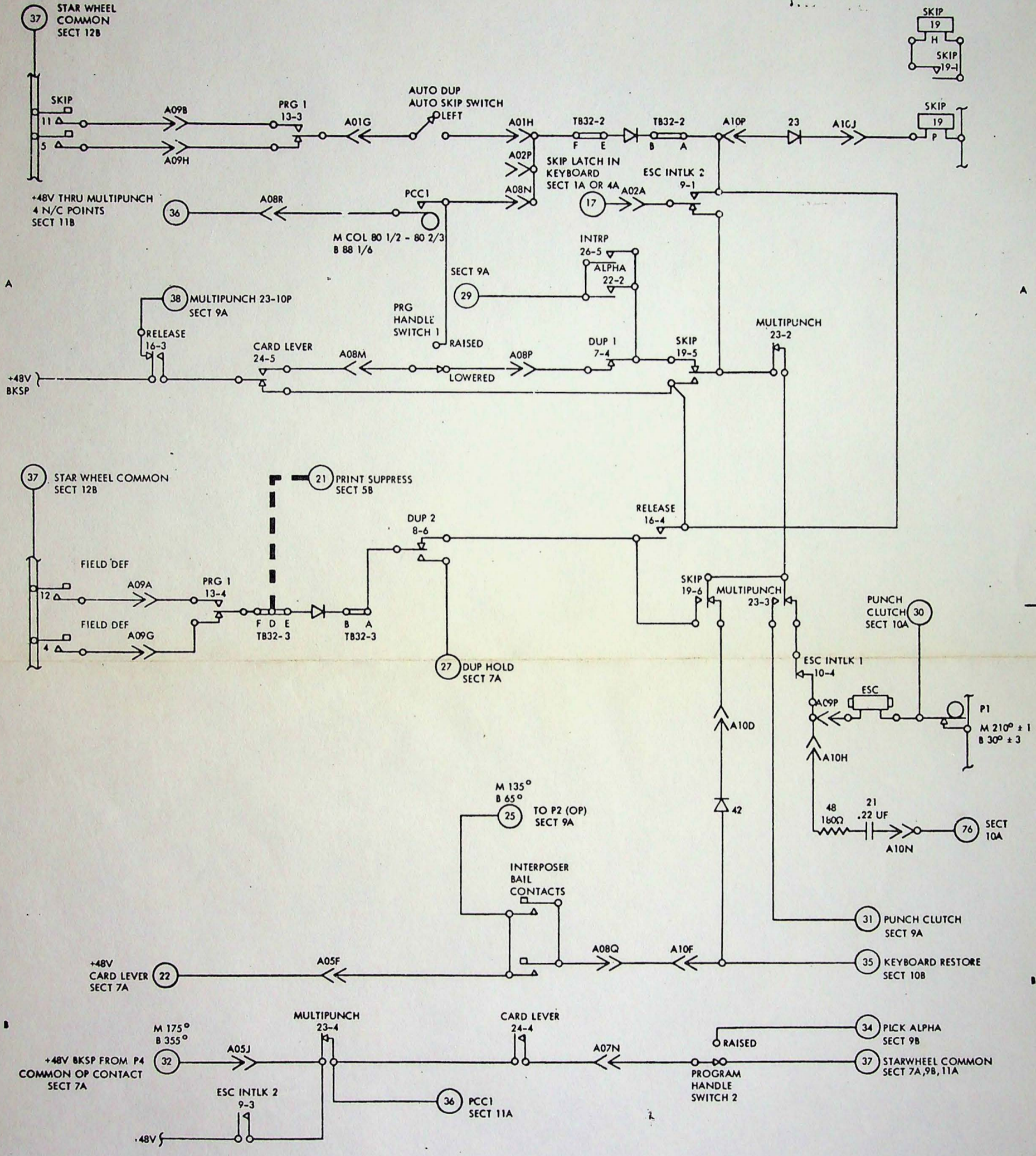
NOTES
 XI POINT TO POINT WIRING FOR +48V AND "0" VOLT NETS SHOWN ON REF PAGE
 XII AS REQ'D FIELD CHANGE ON EC 205981

INTERNATIONAL BUSINESS MACHINES CORP.				NOTE				DEVELOPMENT NO.	
NAME	DATE	CHANGE NO.	DATE	CHANGE NO.	I PRINT TO ENCL. OPNG. NO. 895291				
SYSTEM DIAGRAM	14 OCT 66	205772-G							
PCH CLUTCH-MP-ALPHA-KYBD RES	9 FEB 67	205842-A							
DESIGN AG	9 SEP 66	MODEL	10 APR 67	205981					
CHECK RAS	9 SEP 66	DRAW GT	7 SEP 66						
APPRO FJH	9 SEP 66	CHECK							

5405914

5405975

MOD "C" SKIP-ESCAPE MAG



NOTES
 XI POINT TO POINT WIRING FOR +48V AND "0" VOLT NETS SHOWN ON REF PAGE

INTERNATIONAL BUSINESS MACHINES CORP.		DATE	CHANGE NO.	DATE	CHANGE NO.	NOTE	DEVELOPMENT NO.
NAME	SYSTEMS DIAGRAM	14 OCT 66	205772-G			X PRINT TO ENCL. SPEC. NO. 895291	5405975
	SKIP - ESCAPE MAG	9 FEB 67	205642-A				
DESIGN	AG 9 SEP 66 MODEL						
DETAIL							
CHECK	RAS 9 SEP 66 DRAW GT 7 SEP 66						
APPRO	FJH 9 SEP 66 CHECK						

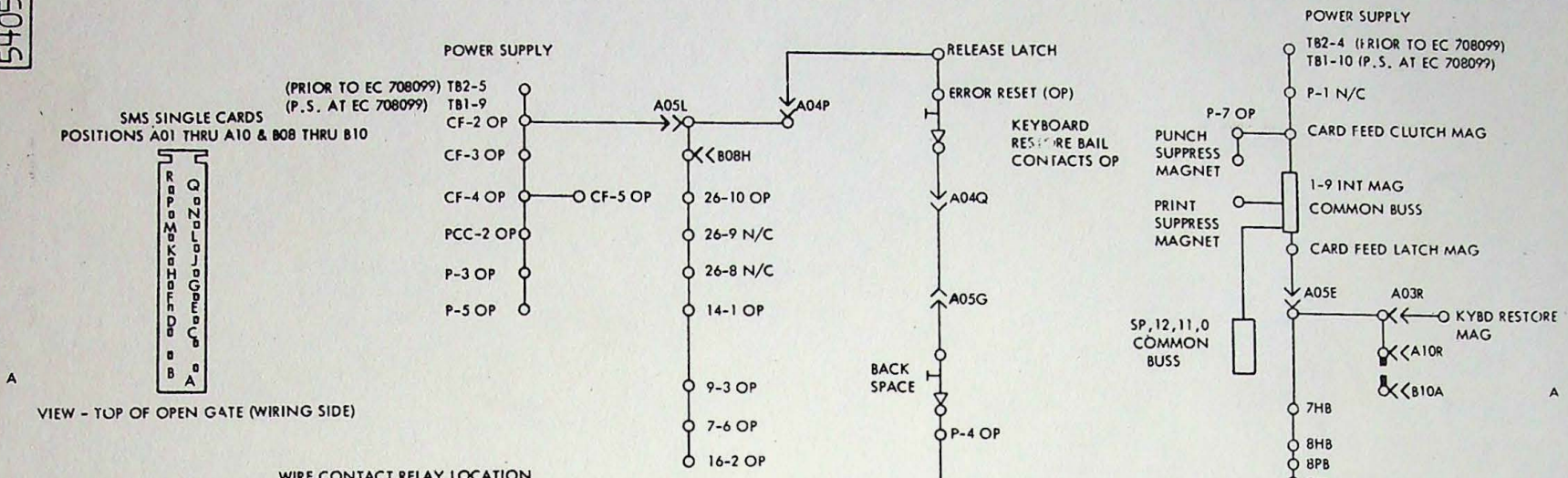
5405976

13

MOD "C" +48 VOLT NET

14

"0" VOLT NET



VIEW - TOP OF OPEN GATE (WIRING SIDE)

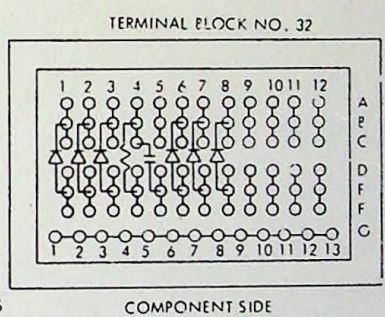
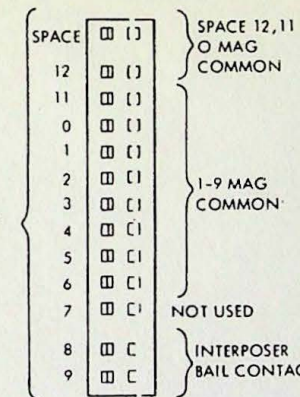
WIRE CONTACT RELAY LOCATION

RELAY	NO.	P	COIL	H	1	2	3	4	5	6	7	8	9	10	11	12	PART NO.	COIL TYPE
DUP 3	4	8B	8B	1A	1A	1A	1A	1A	1A	1A	1A	1A	1A	1A	1A	1A	255735	PU HRH
DUP 1	7	8A	8A	7A	7B	10A	12A	1B	9B								196198	PU HRH
DUP 2	8	8B	8A	8A	9A	9B	10A	8A	11A								196198	PU HRH
ESC INTLK 2	9	10A		12A	8A	11B	9A	9A	7A								196196	PU
ESC INTLK 1	10	10A		10A	*	12B											328273	HSP
PROGRAM 1	13	6A	6A	6A	6A	11A	11B	6B	6A								196198	PU HRH
PROGRAM 2	14	6A	6B	6A	6A	7A	9B										196208	PU HRH
RELEASE	16	8B	8B	8B	9B	11A	12A										196208	PU HRH
CLEAR	17	8B	8B	8B	5A	8B	7B	8B	7B								196198	PU HRH
SKIP	19	12A	12A	12A	8A	5B	9B	12A	12A								196198	PU HRH
PRINT	20	6B	6B	5B	5B												196208	PU HRH
ALPHA	22	10B	10B	1A	12A	4B	XSKIP										196208	PU HRH
MULTIPUNCH	23	10A	10A	9A	12A	12A	11B										104753	HSPU HOLD
CARD LEVER	24	8B	8B	8B	1A	6A	12B	11A	7A								196198	PU HRH
INTRP	26	8A	8A	8A	8B	8B	8A	12A	8A	5A	5A	6B	6B	8B	6B		255735	PU HRH
X-R ELIM	29	8A		1A	1A												196206	PU HRH

* DO NOT INSERT WIRES

SMS CARD NAME	CONNECTOR CHART										ARC SUPP	PRINT	
SMS CARD CODE											FLL	FFH	
PIN	A01	A02	A03	A04	A05	A06	A07	A08	A09	A10	B0B	B09	B10
A	5A	12A	1A	1A	6B	2A	1B	5A	11A	10B			
B	5A		1A	1A	1B	2A	1B	6A	11A				2A 5B
C	5A		1A	1A	1B	2A	1B	7A	7A	5A			6B 5B
D	5A	MC1	1A	1A	6A	2A	1B	5A	8B	12B			5B 5B
E	8A	AUX DUP	5A	1A	14A	2A	1B	7B		10A		7A	5A 5B
F	8A	4B	5A	1A	11B	2A	1B	7A		12B		7A	2B 5B
G	11A	5A	5A	1A	7A	2A	1B	7B	11B	5A		8A	6B
H	12A		5A	1A	6B	2A	1B	10A	11A	12B		8A	5B
J	7B		7A	1A	11B	2A	1B	10A	7A	12A			5B
K	7B		7A	1A	6B	2A	1B	9B	9B	7B			5B
L	6B		10A	1A	13A	2A	1B	9B		10B			5B
M	6B	XSKIP	10A	1A	VLCD	2A	1B	11A		10A		6B	5B
N	6B	8B	10B	1B	HSS	2B	12B	12A	10A	12B			
P	MC1	12A	10B	13A	HSS	7B	10B	12A	12B	12A			
Q		5A	10B	7A	MC1	8B	7B	12B	6B	7B			
R		8B	10B	4B	HSS	10A	7B	11A	9A	10B			

PUNCH UNIT TERM BLOCK FACING WRINLED LUGS



COMP - P/N	DIODE - 347820	DIODE - 347820	DIODE - 347820	RES - 520404	CAP - 5400890	DIODE - 347820	DIODE - 347820	DIODE - 347820
PIN	1	2	3	4	5	6	7	8
A	8B	12A	11A			7A	8A	7A
B	8C	12A	11A	6B		7A	8A	7A
C	8B				6B			
D	8B		11A	5B				
E	8B	12A	11A	5B	6B	7A	8A	7A
F	8B	12A	11B	5B	6B	7A	8A	7A
G		14B			6B			

TB 32 LOCATION

NO.	LOCATION	PART NO.	MAKE	BEAK
1	12B	309630	210° ± 1°	30° ± 3°
2	9A	309634	135° ± 3°	65° ± 2°
3	7B	350359	5° ± 1°	65° ± 3°
4	7A	309630	175° ± 3°	355° ± 2°
5	1B	309629	86° ± 3°	166° ± 2°
6	6B	309630	355° ± 3°	175° ± 2°
7	6B	313414	262° ± 3°	60° ± 2°

LEGEND

- PRINT FEATURE WIRING (STANDARD ON MOD "C")
- COMBINATION KEYBOARD WIRING
- NUMERIC KEYBOARD WIRING
- COMMON BUSS

ARC SUPPRESSION BLOCKS

PIN	11A	11B	21A
1	1A	6A	8B
2	1B	6B	8B
3	8A	8B	6B
4	10A	8B	10B

328502
328601
328601

NO.	LOCATION	PART NO.	MAKE CONTACT	BREAK CONTACT
2	6A	344181	265° ± 5	65° ± 2
3	7B	315042	75° ± 2	285° ± 5
4	10B	313807	5° ± 2	100° ± 5
5	5B	311384	30° ± 2	45° ± 5

DISCRETE COMPONENTS

PART NO.	FROM	TO	SECTION
2160917	ACROSS CD FD MAG		6A
347820	19-3 N.C	20-2 OP	5B
347820	7-6 N.O	8-5 N.C	7A
347820	9-2 N.O	11A-3	
5347750	TB32-4F	26-12 N.O	6B
805044	TB32-5G	A05K	6F

NOTES

XI AS REQ'D FIELD CHANGE ON EC 205981

INTERNATIONAL BUSINESS MACHINES CORP.	DATE	CHARGE NO.	DATE	CHARGE NO.	NOTE	DEVELOPMENT NO.
NAME SYSTEMS DIAGRAM	14 OCT 66	205772-G	15 JAN 69	920013	X PRINT TO ENG. SPEC. NO. 695291	5405976
CHART LOCATION	9 FEB 67	205342-A				
DESIGN AG 9SEP66 MODEL	27 MAR 67	205783				
CHECK RAS 9SEP66 DRAW IDI 22DEC67	17 APR 67	205781				
APPRO FJII 9SEP66 CHECK	22 DEC 67	206154				

537356

00.29.10.0

KEYBOARD & CAM REFERENCE

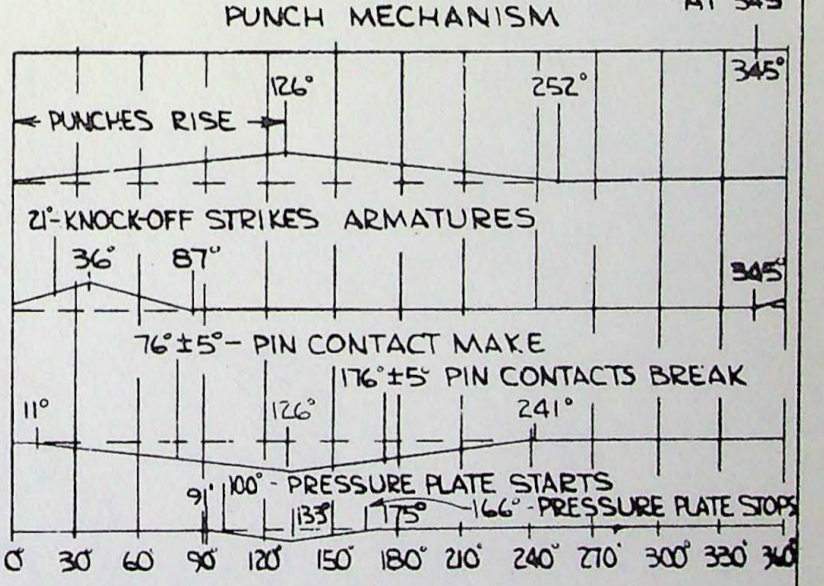
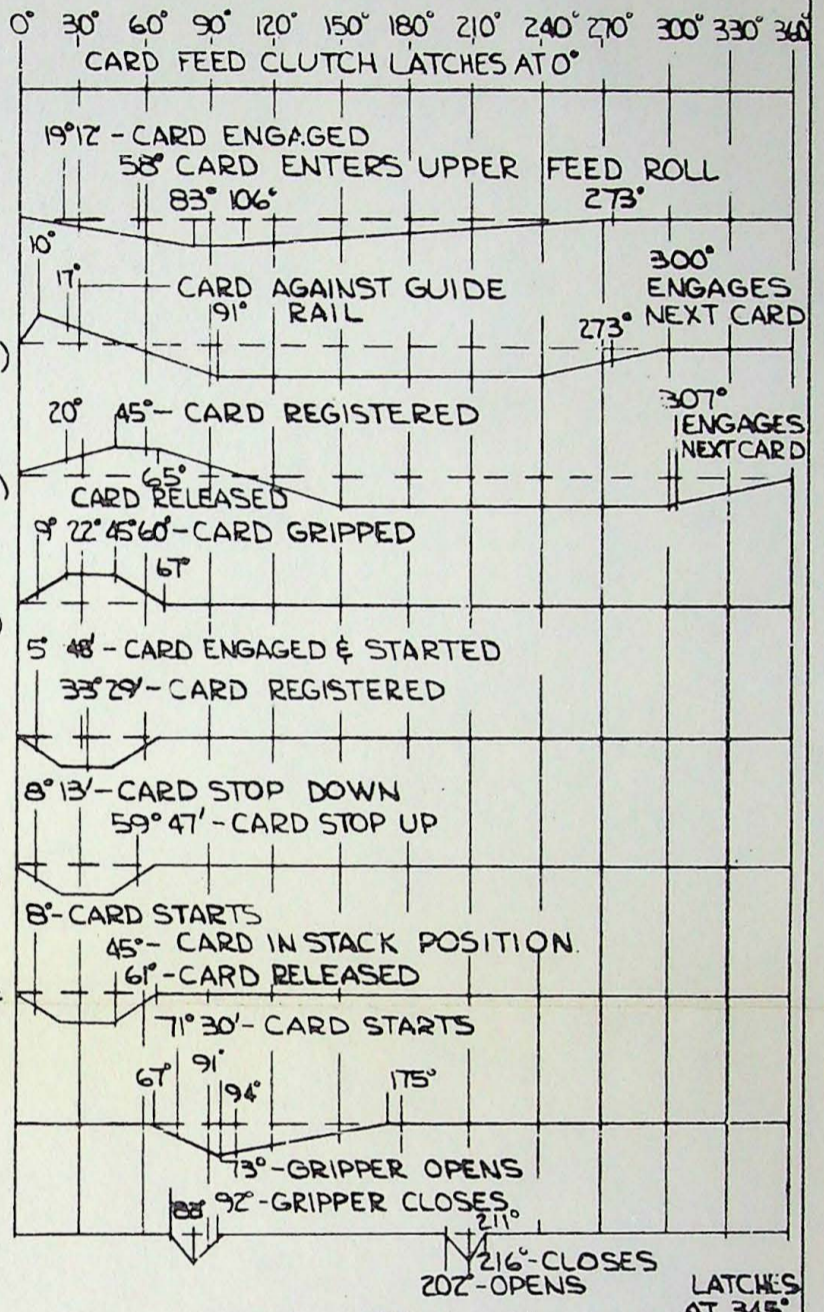
MASTER

MECHANICAL TIME CHART
CARD FEED MECHANISM

STEM POS	GRAPHIC		CARD CODE		BAILS		LATCHES	
	ALPHA	NUMERIC	ALPHA	NUMERIC	ALPHA	NUMERIC	ALPHA	NUMERIC
1	ERROR RESET							
2	MULTI PUNCH							
3	NUMERIC							
4	Q	+	11-8	12-8-6	13,9	12,8,6		
5	A		12-1		15,3			
6	@	#	8-4	8-3	9,7	8,2		
7	Z		0-9		1,11			
8	W	-	0-6	0-8-5	14	14,8,4	X	
9	S	>	0-2	0-8-6	14	14,8,6	X	
10	%	,	0-8-4	0-8-3	14,9,7	14,8,2		
11	X	?	0-7	0-8-7	14	14,8	X	X
12	E)	12-5	11-8-5	15	10,8	X	X
13	D	:	12-4	8-2	15,7	8		X
14	*	\$	11-8-4	11-8-3	7,9	8,2	X	X
15	C	"	12-3	8-7	15,5	8		X
16	R	¢	11-9	12-8-2	13,11	12,8		X
17	F	:	12-6	11-8-6	15	10,8	X	X
18	<	.	12-8-4	12-8-3	9,7	8,2	X	X
19	V	=	0-5	6-8	1	8,6	X	
20	T	0-8-2	0-3	0-8-2	14,5	14,8		X
21	G	-	12-7	11-8-7	15	10,8	X	X
22	MASTER CARD						X	X
23	B	!	12-2	11-8-2	15	10,8	X	X
24	Y	!	0-8	12-8-7	1,9	12,8		X
25	H	'	12-8	8-5	15,9	8,4		
26	DUP							
27	N	(11-5	12-8-5	13	12,8	X	X
28	U	1	0-4	1	1,7			X
29	J	4	11-1	4	13,3			X
30	-	-	11	11	13	10		
31	M	7	11-4	7	13,7			X
32	I	2	12-9	2	15,11			X
33	K	5	11-2	5	13	4	X	
34	/	0	0-1	0	14,3	14		
35	,	8	0-8-3	8	19,5	8		
36	0	3	11-6	3	13	2	X	
37	L	6	11-3	6	13,5	6		
38	SPACE						X	X
39	.	9	12-8-3	9	15,9,5		X	X
40	P	&	11-7	12	13	12	X	X
41	SKIP						X	X
42	RELEASE						X	X
43	AUX DUP						X	X
44	FEED							
45	REGISTER						X	X
46	PROG 2							
47	ALPHA							
48	LEFT ZERO						X	X
49	LEFT ZERO							
50	PROG 1							

ODD NUMBER BAILS ON RIGHT SIDE OF KEYBOARD
EVEN NUMBER BAILS ON LEFT SIDE OF KEYBOARD

- CARD FEED CLUTCH
60 RPM
1° = 2.78 MS
- CARD FEED KNIFE
- CARD ALIGNER
(VERTICAL ALIGNMENT)
- CARD PUSHER FEED
(FOR DETAIL CARD)
- PRESSURE ROLLS
(ON FEED WHEELS)
- INSERTING ROLL
(FOR MASTER CARD)
- CARD REGISTER STOP
(FOR MASTER STOP)
- EJECT ROLL
(FOR CARD TO BE STACKED)
- CARD PUSHER-STACKER
- STACKER DRUM GRIPPERS
- PUNCH CLUTCH
1200 RPM } NON-PRINT
(1.39 MS)
1080 RPM } PRINT
(1.54 MS)
- PUNCH BAIL
- ARMATURE KNOCK-OFF
- PIN OPER CAM
- PRINT CAM



INTERNATIONAL BUSINESS MACHINES CORP.		DATE	CHANGE NO.	DATE	CHANGE NO.	NOTE	DEVELOPMENT NO.
NAME	SYSTEMS DIAGRAM	12 30 64	205199			X PRINT TO ENG. SPEC. NO. 895291	
DESIGN	WT 11-23-64						
DETAIL							
CHECK	LF 11-23-64						
APPRO	JKC 11-23-64						

00.29.10.0

5373561

PRINT

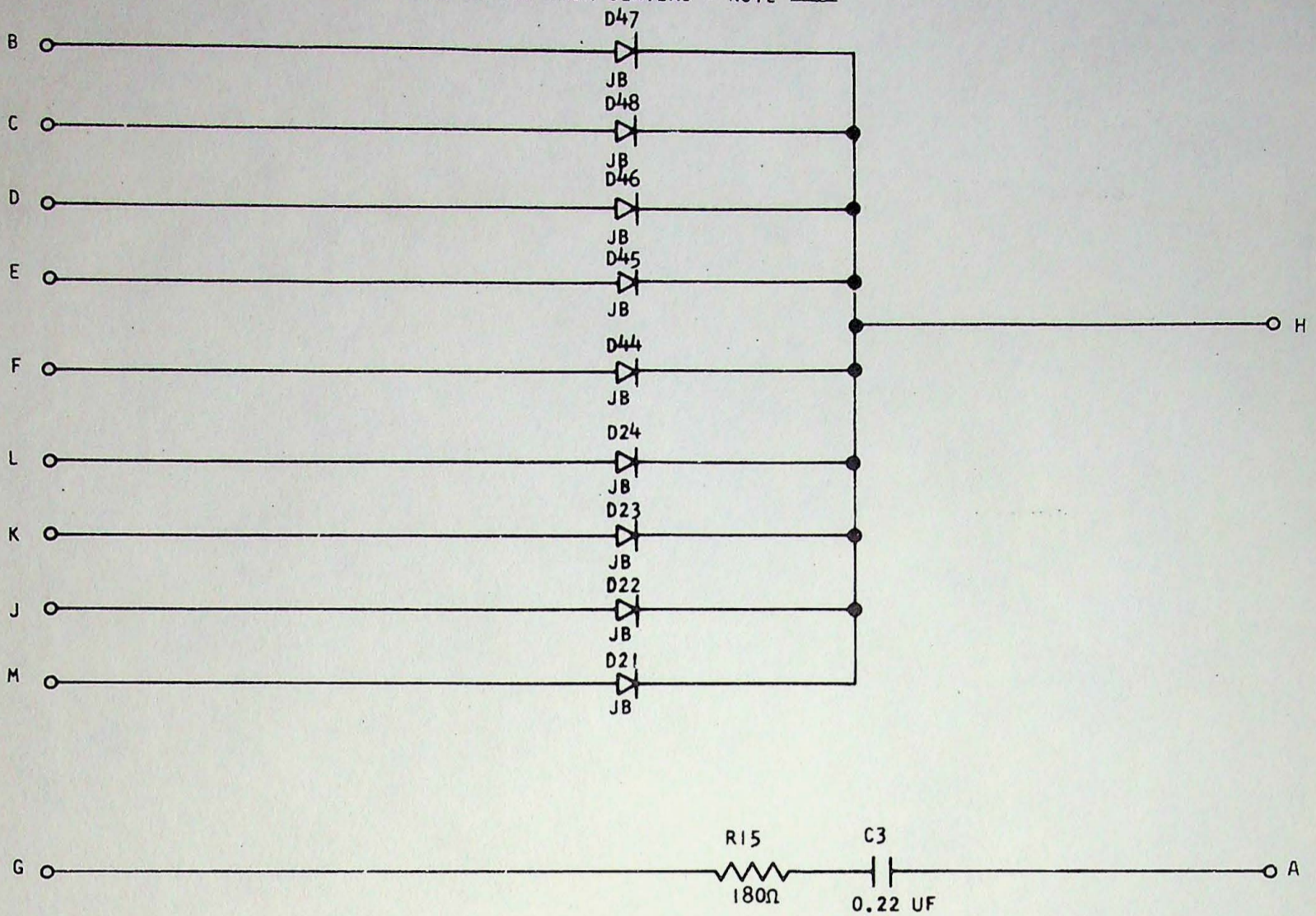
MOUNT CARD ON 1.0 INCH CENTERS - NOTE XIII

375105

F F H -

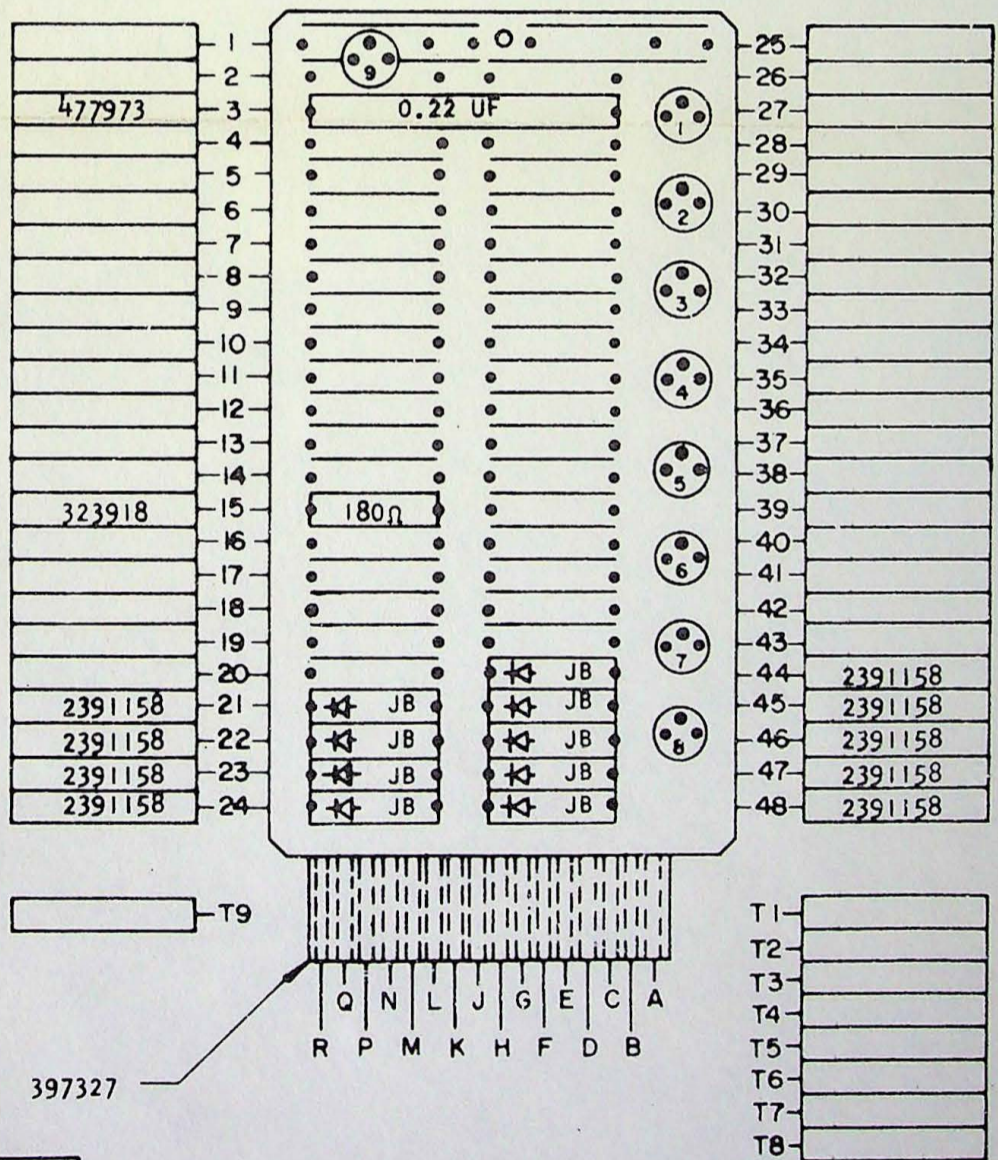
STANDARDS CODE

2-7045



NOTES

- X CIRCUIT MUST CONFORM TO ENGINEERING SPECIFICATION
- XI ASSEMBLE TO ENGINEERING SPECIFICATION 895396 AND 891999
- XII ALL RESISTORS ARE 1/2 WATT AND ± 5% UNLESS OTHERWISE NOTED
- XIII MAXIMUM HEIGHT COMPONENTS MAY PROJECT ABOVE COMPONENT SIDE OF CARD WILL BE .640



B MFG. ENG. *Pw* 5.31.66

CIRCUIT AND PACKAGING STANDARD

APPROVAL DATE

KAT NPB 5/6/66

HOLE PATTERN 493457

COMPONENT SIDE

T1
T2
T3
T4
T5
T6
T7
T8

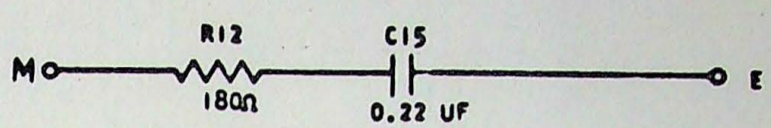
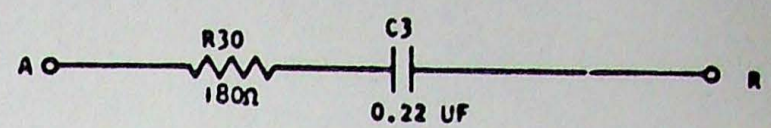
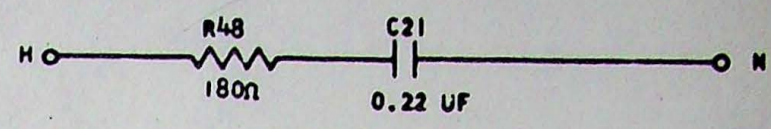
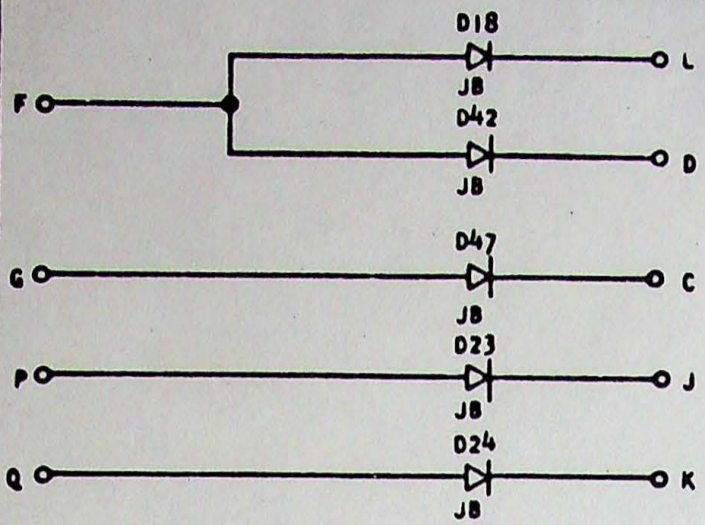
397327

INTERNATIONAL BUSINESS MACHINES CORP.				DATE	CHANGE NO.	APPROVAL	DATE	CHANGE NO.	APPROVAL	DEVELOPMENT NO.
NAME	CARD ASM TSTR - PRINT			1 JUN 66	126540	<i>AKK</i>				PA-3400 A
DESIGN	VE	5 APR 66	MODEL	SMS						375105
DETAIL	VE	5 APR 66	SCALE	NONE						
CHECK	VE	5 APR 66	DRAW	VE 5 APR 66						
APPRO			CHECK	<i>C.C. 4/1/66</i>						

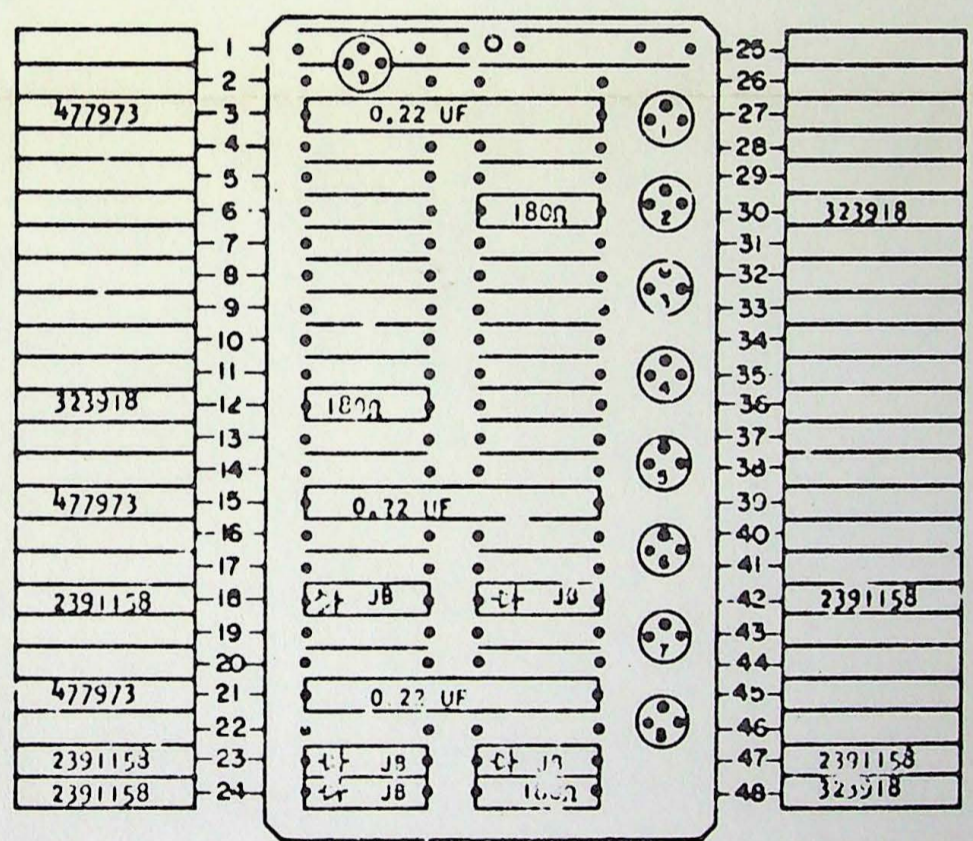
375233

ARC SUPPRESSION
MOUNT CARD ON 1.0 INCH CENTERS - NOTE XIII

375233
F L L -
STANDARDS CODE
2-70-5



- NOTES
- I CIRCUIT MUST CONFORM TO ENGINEERING SPECIFICATION
 - XI ASSEMBLE TO ENGINEERING SPECIFICATION 895398 AND 891599
 - XII ALL RESISTORS ARE 1/2 WATT AND ± 5% UNLESS OTHERWISE NOTED
 - XIII MAXIMUM HEIGHT COMPONENTS MAY PROJECT ABOVE COMPONENT SIDE OF CARD WILL BE .640



B

MFG ENG	PW	5-16-67
CIRCUIT AND PACKAGING STANDARD		
APPROVAL	DATE	
✓ K	4-17-67	
HOLE PATTERN		
493457		



INTERNATIONAL BUSINESS MACHINES CORP.		DATE	CHANGE NO.	APPROVAL	DATE	CHANGE NO.	APPROVAL	DEVELOPMENT NO.
NAME	CARD ASM TSTR	17 MAY 67	1-1144	<i>[Signature]</i>				
ARC SUPPRESSION								
DESIGN	SCALE							
DRAW	SJ	10 MAY 67						
CHECK	SJ	10 MAY 67						
APPRO	SJ	10 MAY 67						

82-397-2 6-22-61

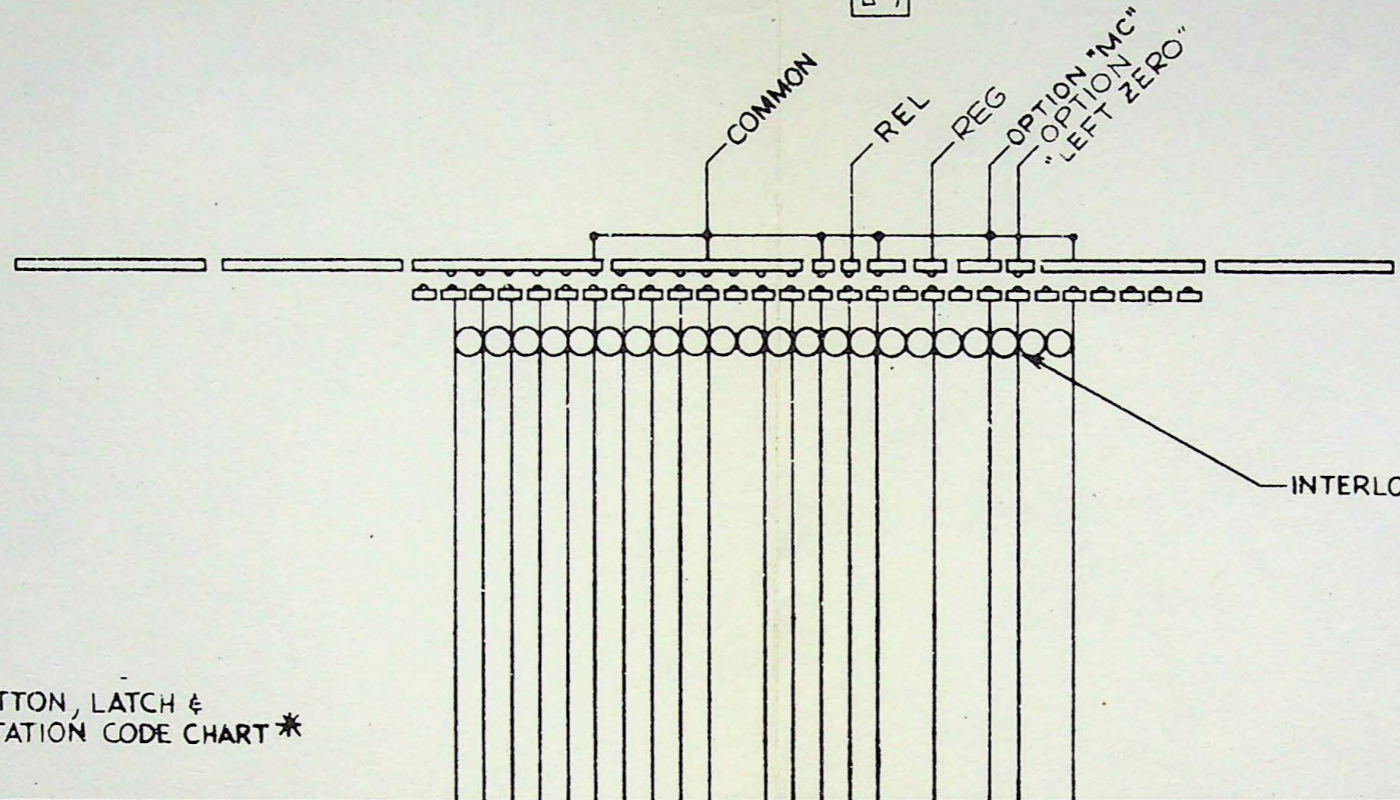
375233

STANDARDS CODE	5367184
RELEASED FOR ASM	QTY

TECH SERVICES APPRO		SYM	DATE	CHANGE NO	TECH APPRO	SYM	DATE	CHANGE NO	TECH APPRO
ELEC			5-21-64	205050-A			JUL 66	205516	
MET			5-21-64	205050E					
PLASTIC			12-15-64	205190					
FINISH			4-20-65	205272					

DEVELOPMENT NO	5367184
Q/M	

REFERENCE DRAWING
MASTER



KEYBUTTON, LATCH & PERMUTATION CODE CHART *

KEYBUTTON CHART	NUMERIC CHARACTER	STD	STEM POS
			1-50
KEYSTEM CONT N/O			
KEYSTEM CONT N/C			
SPACER 313274 QUAN			
			1
			2
			3
			4
			5
			6
			7
			8
			9
			10
			11
			12
			13
			14
			15
			16
			17
			18
			19
			20
			21
			22
			23
			24
			25
			26
			27
			28
			29
			30
			31
			32
			33
			34
			35
			36
			37
			38
			39
			40
			41
			42
			43
			44
			45
			46
			47
			48
			49
			50

* SEE REF DWG P/N

5367184

IBM MATERIAL	NO	TOLERANCE UNLESS OTHERWISE NOTED	2 PLACE DEC ±	MUST CONFORM TO ENG SPEC 890350	INTERNATIONAL BUSINESS MACHINES CORP
CASE DEPTH		CORNERS AND/OR EDGES BROKEN	3 PLACE DEC ±	ALIGNMENT WITHIN	NAME CODE CHART -
HARDNESS		RADI UNLESS OTHERWISE NOTED	ANGLES ±	CONC TO DU WITHIN	NUMERIC KEYBOARD
SURFACE TREATMENT			OUTSIDE MAX	FLAT WITHIN	DESIGN FSV 420-64 TYPE
			INSIDE MAX	PARALLEL TO DU WITHIN	DETAIL
				STRAIGHT WITHIN	CHECK RAS 420-64 DRAW CDA 5-11-64
				SQUARE TO DU WITHIN	APPRO JKC 4-20-64 CHECK JMA 5-10-64