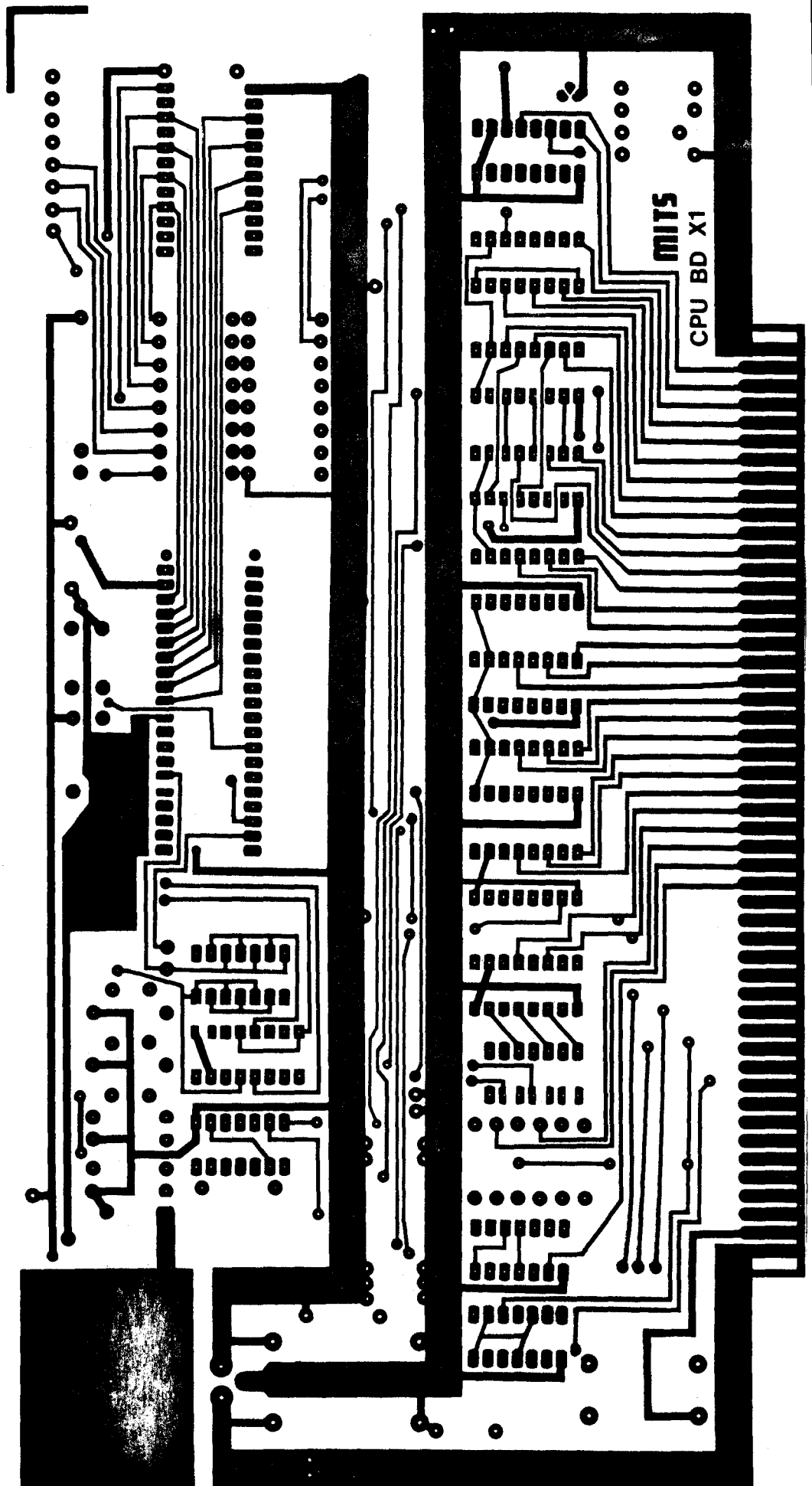


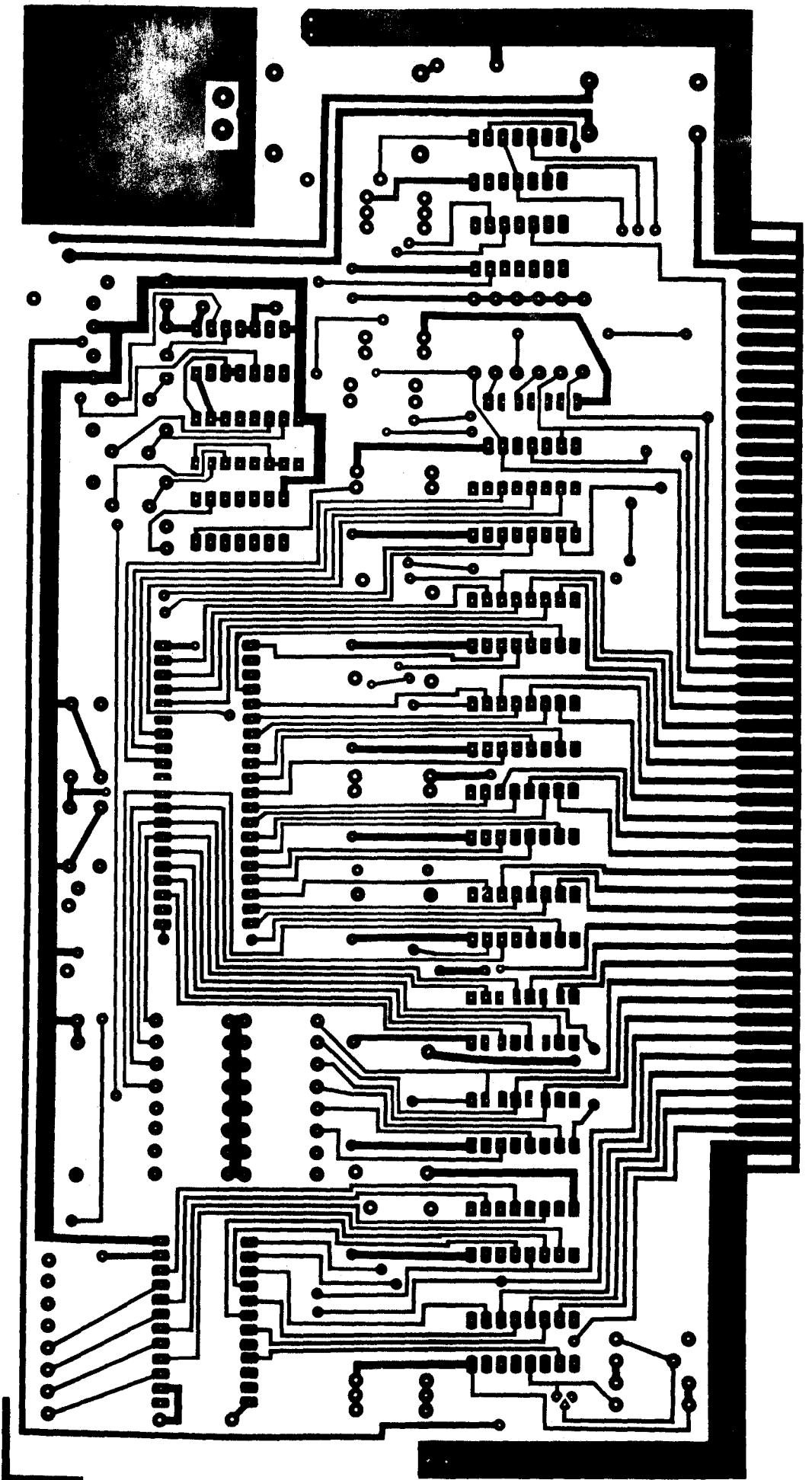
MITS
8800
CPU Board
Front



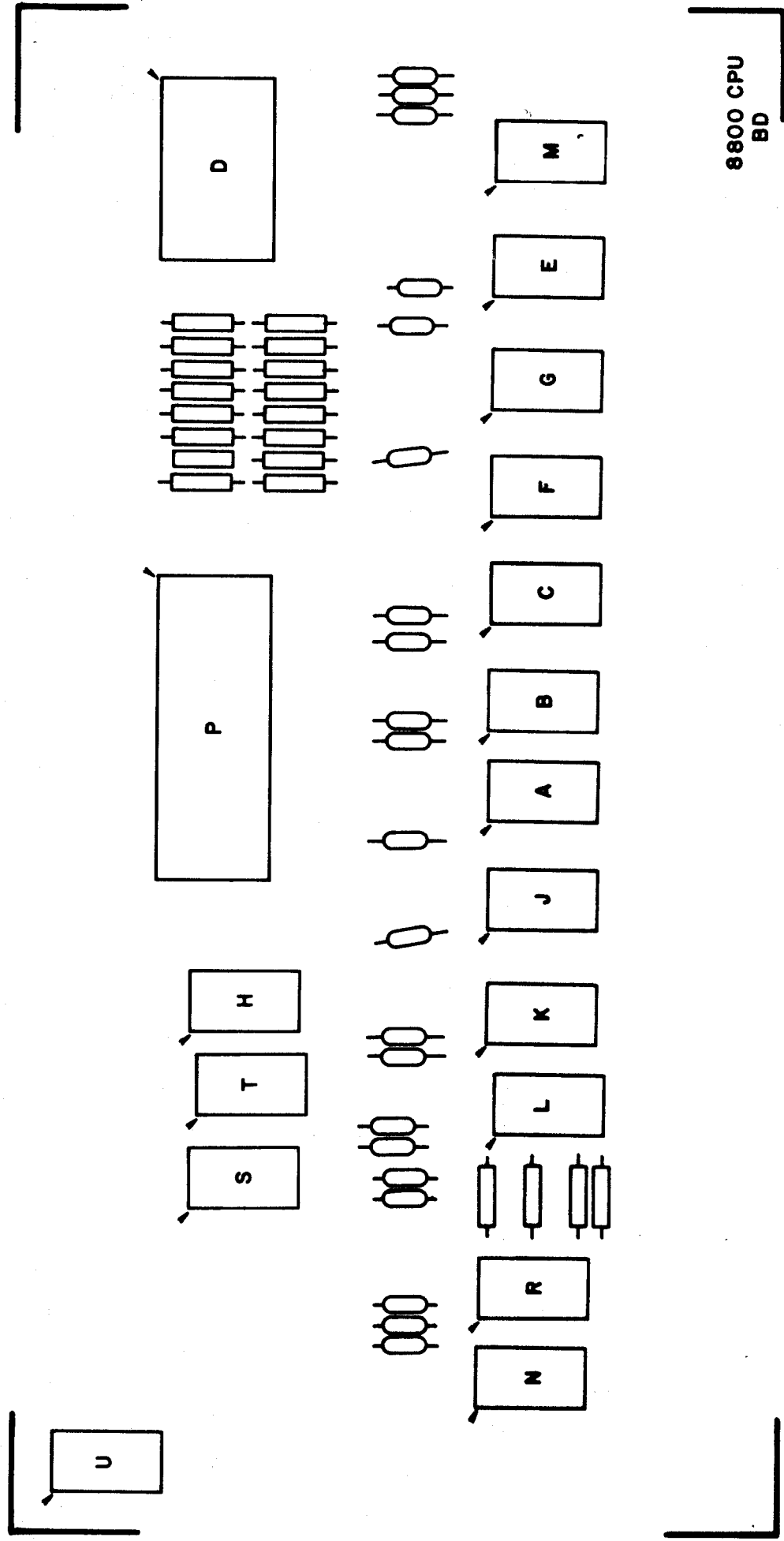
8800

CPU Board

Back



MITS
8800
CPU Board
Front



COMPONENT LEGEND

D/C Board

IC Identification

A, B, C, D, E,	7405
F, G, K, L, M	74123
H, N, U, V	7400
J	7473
O, Y	7430
R	7402
S, T	7410
W	7404
X	8T97
Z	74L04
AA, BB	74LS04

Resistors

R1, R2, R9, R13, R14, R15, R16, R17, R18, R19, R22	1K
R3, R5, R7, R10	10K
R4, R6, R8, R12	2.2K
R11	20K
R20	27K
R21, & R24 - R59	220
R23	100

Capacitors

C6, C2, C10	.001uF
C16, C8, C11	.01uF
All Other Capacitors	.1uF

1K Static Memory Boards

IC Identification

A, C	74L04
B	7430
D, L, N	74L00
E	7404
F	7400
H, J	8T97
K	7473

Resistors

MA1, MA2, MB1, MB2, MC1, MC2, MD1, MD2	8101
---	------

All Capacitors

.1uF

8800 CPU Board

IC Identification

A, B, C, E, F, G, J, K, M	8T97
D	8212
H	7406
L, S	7404
N	7474
P	8080
R	7402
T	74123
U	7805

All Resistors

10K

All Capacitors

.1uF

8800 DRILLING GUIDE

0.0312 (1/32)

All Integrated Circuits
All Plated Through Holes

0.0430 (# 57)

All $\frac{1}{2}$ w Resistors
All Capacitors
Crystal

0.0625 (1/16)

All 2w Resistors
5V Regulator (Pins)
All Toggle Switches

0.1562 (5/32)

5V Regulator (Screw)