



Increased speed and reduced cost in the identification of unknown chemical compounds resulted when General Electric at Valley Forge, Pa., put together this system. A TEKTRONIX 4051 and 4907, A.M.S. Solver One interface and software, Perkin-Elmer Gas Chromatograph/Mass Spectrometer and a Columbia Scientific digital readout comprise the powerful analysis tool. (Courtesy of General Electric, Valley Forge, Pa.)

## A 4051-Based Gas Chromatograph/Mass Spectrometer Data System

by Nick Bazil  
A.M.S. Inc.

Gas Chromatograph/Mass Spectrometer systems are powerful tools for identifying and verifying unknown chemical compounds. They can be used to identify a pollutant in a water system, for instance, or any chemical sample. At General Electric Co. in Valley Forge, PA, a Gas Chromatograph/Mass Spectrometer system is in place in their analytical chemistry lab; its heart is a 4051 Graphic System with a 4907 File Manager. The 4051 handles the data reduction and analysis for the system, while the 4907 is the key to quickly matching the unknown sample against the library of known compounds.

In the past, data reduction and analysis for a Gas Chromatograph/Mass Spectrometer combination required a minicomputer, a requirement that could add fifty to eighty thousand dollars to the cost of a system. The high cost made it difficult to justify such data systems. But

the advent of the powerful 4907 File Manager, coupled with the A.M.S. Solver One interface and application software package, has considerably reduced the cost of such systems.

The Gas Chromatograph/Mass Spectrometer system began with a 4051 Graphic System and an A.M.S. interface; the interface collected data from a Perkin-Elmer Gas Chromatograph/Mass Spectrometer system, through a Columbia Scientific digital readout connected to them. The digital readout unit reads the peaks from the

### In This Issue

Science Fair Goes to Space	3
Modeling and Reporting	6
TEKniques Wins	6
Editor's Note	7
Contest Winners	7
Programming Tips	8
BASIC Bits	15
New Abstracts	16
New Vendor Catalog	19
Library Addresses	20

Gas Chromatograph and Mass Spectrometer, sorts the data, and performs an intensity count (Fig. 1).

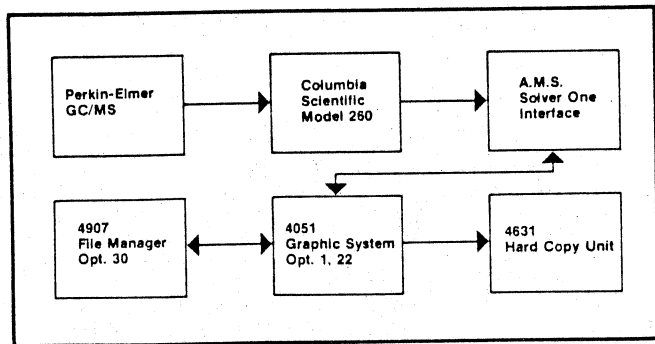


Fig. 1. System Configuration.

In this original system, G.E.'s Bob Ross intended to simply collect, normalize, graph, and tabulate the data locally, taking advantage of the 4051's high resolution display. (Refer to Figs. 2 and 3.) A time-share system could then be used to identify the unknown compounds from the mass spectrum run. A given sample in G.E.'s analytical chemistry lab could have 50 Gas Chromatograph peaks, denoting different compounds and different intensities or concentrations.

Visual interpretation and hand data entry with such

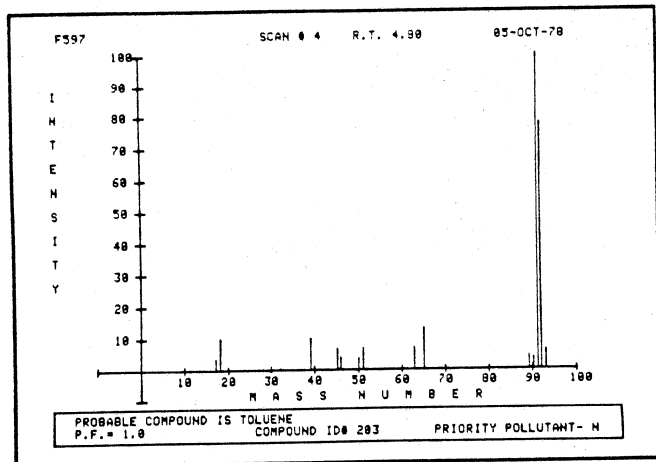


Fig. 2. Graphic Output of a mass spectra scan.

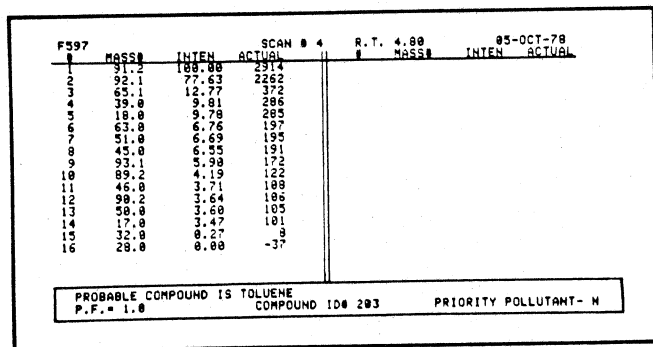


Fig. 3. Normalized and sorted data from the graph in Figure 2. complex possibilities restricted productivity in the system. Two or three days were typically required to obtain a sample identification. The 4907 File Manager was then added to the system, and A.M.S. added a

software package to identify compounds locally on the 4051, using the 4907 as the standard compound library. The result is a successful and pleasing system with local control and vastly increased speed and productivity.

### System Capabilities

The system has two primary capabilities. One is its ability to collect multiple scans from the Mass Spectrometer, then search for known compounds to match each scan. The other is positive compound identification obtained by plotting retention time versus ion current.

To search for compound matches requires a library of standard compounds. The library for this system was created by storing the scans from a standard sample kit, on the 4907 File Manager. (The fact that this method of locally storing a standard library which reflects the characteristics of a given system is an added benefit.)

Searching for compound matches, in its purest sense, is quite simple. It requires taking the five most intense mass numbers from a scan, then searching through the standards library for a match of those numbers. This search can require thousands of iterations, but can be performed locally, with the 4907 in place, in a fraction of the time previously required.

During a search, the system will display the hit factor (5 out of 5, 4 out of 5, etc.), probable compound name, number, and priority pollutant for each of the run scans (Fig. 4). Optionally, the system will attach this information to the scan, so the scan can be replotted with the found compound information appearing on the graph.

Plotting retention time versus ion current for any three mass numbers is a powerful tool for positively verifying the compound identification. With this routine, any three

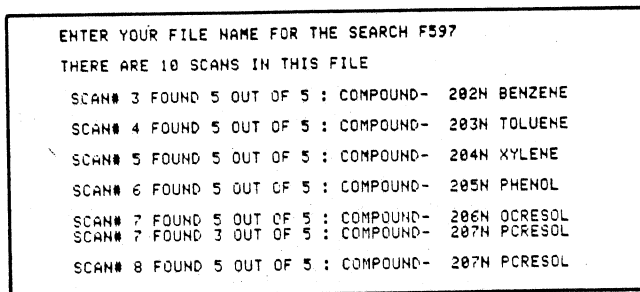


Fig. 4. Hard Copy output of the search for compounds on a run file.

TEKniques, the 4051 Applications Library Newsletter, is published by the Information Display Group of Tektronix, Inc., Group 451, P.O. Box 500, Beaverton, Oregon 97077. It is distributed to TEKTRONIX 4051 users and members of the 4051 Applications Library.

Publishing Manager  
Managing Editor  
Editor  
Graphic Design  
Circulation

Ken Cramer  
Patricia Kelley  
Terence Davis  
John Ellis  
Rory Gugliotta

mass numbers can be selected for plotting during the entire run. The desired retention time can then be set to tabulate the ratio of intensities between those three mass numbers at that retention time (Fig. 5). The three mass ratios and the associated retention time verifies the probable compound identification.

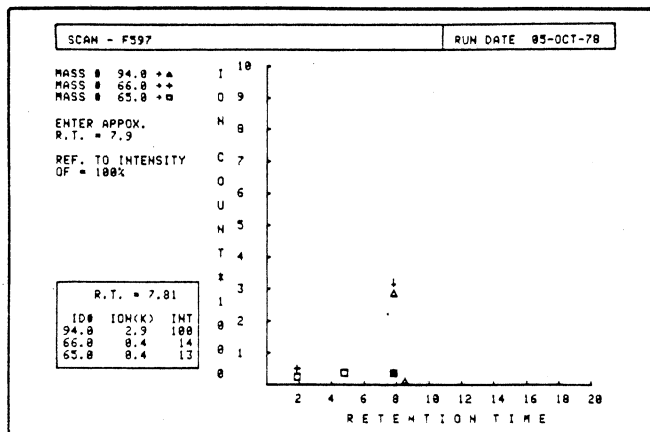


Fig. 5. Graph of retention time versus ion current for three mass numbers.

There are many other useful capabilities in the system, such as multiple background correction to compensate for column conditions. Also, any amount of mass numbers can be deleted from a run before any calculations are initiated, to clean up any bad samples that may have occurred. Data for each run can be stored on the disc for a run library and can be changed or deleted at any time. There are also utility commands for directories, automatic hard copy and disc to disc transfers.

The key to the successful operation of this system resides in the power of the 4907 File Manager coupled with the versatility of the Solver One system interface. They have made possible a desk-top Gas Chromatograph/Mass Spectrometer system, with data reduction and analysis, that produces desirable results at one-third the cost of a mini-based system. And the two or three days have been reduced to about twenty minutes, with a 4051 and a 4907 at the system's heart. (Any inquiries concerning the GC/MS data system should be directed to A.M.S. Inc., Box 873, Lake Elmo, MN 55042, (612)-439-0022.)

## Science Fair Goes to Space: 4051 Helps

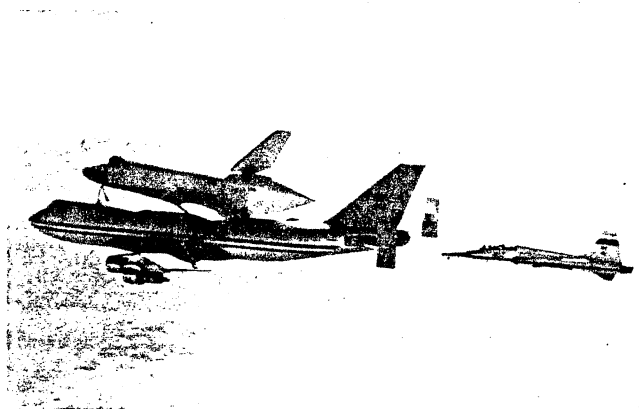
by Terry Davis

NASA's space shuttle flights, beginning early in the 1980's, will transform costly and complex space missions into routine, economical operations. The hybrid orbiter portion of the space shuttle lands like an airplane after its orbiting missions, to be checked out and launched again. The orbiter's huge cargo bay can carry heavy loads into space and bring them safely back again, landing on a three-mile strip. The many possible uses of such facilities stretch the average imagination. One early entry into the program, however, is the project of a 16-year old high school junior whose scientific interest and imagination made him a natural participant in the space shuttle project. And the 4051 is helping him on both ends of the project.

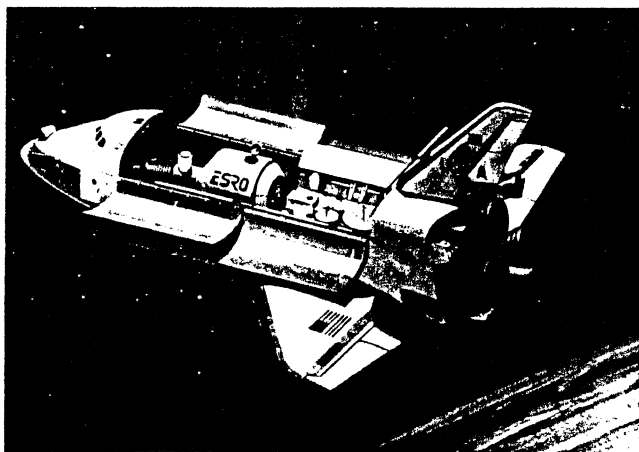
### Beginnings

Bob Wheeler has long been interested in science. The sixth grade found him programming simple computers. In junior high his teachers allowed him an extra period to do science research, and by the ninth grade he was teaching science to seventh grade students. During this time, Bob did lots of self-imposed research, along with science fair projects. His last science fair project was measurement of lunar mountains—which placed fourth in the General Motors International Science and Engineering Fair at Anaheim, Calif. So research beyond the bounds of earth isn't new to him.

In the tenth grade, three busloads of high school students from the Ogden, Utah, area went to Edwards Air Force



Space Shuttle Orbiter and 747 Carrier Aircraft. (Reprinted from NASA JSCL-157 (U.S. Government Printing Office: 1977 774-457))



Shuttle Orbiter Carrying Spacelab. (Reprinted from NASA JSCL-133 (U.S. Government Printing Office: 1975 671-191/6))

Base in Southern California to watch space shuttle tests. Bob was in one of those buses and was immediately fascinated by the shuttle project, from the expanding tile heat shields to the computer-assisted flight. Now Bob is sixteen years old and a junior at Weber High School in Pleasant View, Utah. He's well on his way to producing a programmable microprocessor-controlled experiment for one of the early space shuttle orbital flights.

A parallel factor in Bob's space shuttle involvement is a North Ogden neighbor, R. Gilbert Moore. He works at Thiokol, the manufacturer of the two solid-fuel space shuttle motors. When engineers at NASA decided to offer for sale portions of the so-called "get-away space," the empty test flight payload area, Moore took an immediate interest. He reserved several of these cannisters, and offered one of them to Weber High School, where his son is also a student. Dr. James West, Science Coordinator, and Earl H. Heninger, Environmental Center Director, of Weber School District, teach advanced placement science courses at Weber High School. They immediately saw the opportunity for Bob to exercise his science and programming skills, and realize some of his fascination with the space shuttle program. With their encouragement, Bob started thinking about a project.

### Getting Started

During June of last year, Bob attended a Space Shuttle Mini-Conference at Utah State University. There he and the other attendees were told of the requisites for a space shuttle project. Bob took particular note of NASA's Ernie Ott, who explained, "One of the biggest problems will be designing a controller to coordinate the timing and logic



Bob Wheeler, North Ogden, Utah, hopes to find the origin of cosmic rays. To accomplish this mission, he's sending a 4051-developed project along on one of the early space shuttle flights. At the left is John Hess, Tektronix Sales Engineer, who aided Bob in getting the kit to build the controller.

of the experiments." Having some experience in digital design and in programming, Bob began to think of a hardware timer as a project controller.

Two weeks after the Space Shuttle Mini-Conference, Bob was back at Utah State University for a National Science Foundation Summer Science Training Program. There Bob found a 4051 Graphic System in the math department, and got permission to use it. (Having previously read 4051 pamphlets, he was anxious to try his hand.) He and a friend, Dale Sather, spent all of their spare time during the six-week conference developing programs on the 4051. Bob says, "As with most people who are introduced to the 4051, we were convinced of its capabilities after using its powerful BASIC and excellent graphics." Bob and Dale even worked their class projects on the 4051, so they'd have more time for their own 4051 application projects.

One of their projects was a simulation of Apollo from lift-off to splash-down; this was a natural with their mutual interest in computing and Bob's love of astronomy. Working closely, Bob and Dale read up on Apollo, researching facts about the mission. Then they designed a model, a simulation of an entire Apollo flight. This effort taught the two programmers every 4051 BASIC command. They even looked at the System Software tape code to see how operations were performed, and used what they learned to speed up their own graphics operations.

After learning that the 4051 was designed around the M6800 microprocessor, Bob wanted to know more about the 6800. For the next two months he read about the 6800, and studied 6800 Assembly Language. He soon decided that the flexibility of the 6800 made it a much better candidate for the heart of his project, and it replaced his hardware-timer idea. Then John Hess, a friend who works at the Tektronix Field Office in Salt Lake City, got together with Transera Corporation to donate a Motorola 6800 Evaluation Kit. Bob suddenly found himself with the parts he needed to build a 6800-based controller. His project was really under way!

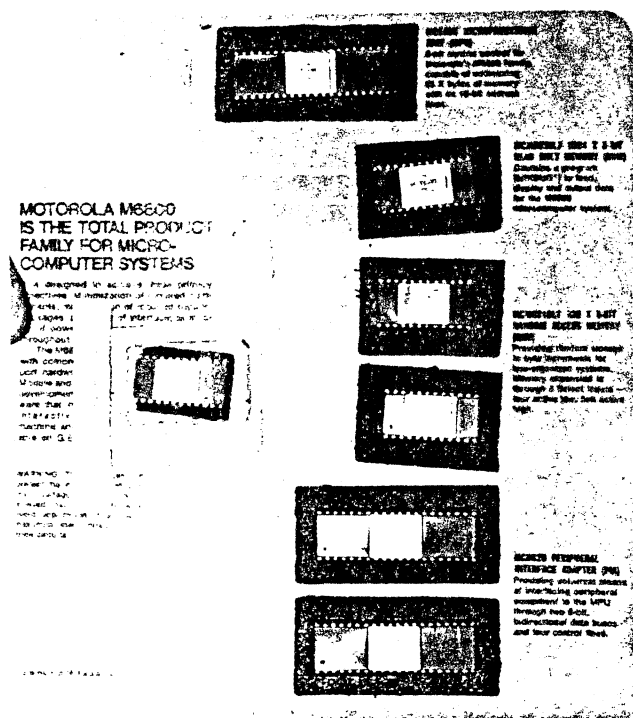
### More for the 4051

Bob was disenchanted with the time necessary to program the 6800 using its own hex code, so his next step was developing an assembler for the 6800. Again obtaining the use of a 4051, Bob developed his own assembler; most of it was developed in his room at home over Christmas vacation. The assembler runs on the 4051 and, through a special ROM, loads the 6800 controller memory with assembly-language programs. This lets Bob use the power of the 4051 and the small size of his 6800 processor for his space shuttle project.

### Refining the Project

Bob soon began to feel that simply flying a working controller would be an opportunity missed. He began to

think of a project that the processor could control, to examine some astronomical phenomena. Bob talked to the Electrodynamics Laboratory at Utah State University and found them willing to help design a cosmic ray detector for the project. So he began to plan a method of using his 6800-based controller to gather cosmic ray data. In the meantime, he thought there must be a way to reduce the size of the 6800 board. He called Motorola who put him in touch with Erwin Carroll at the Motorola plant in Houston. Carroll is now working with Bob to refine his controller for use with the cosmic ray detector.



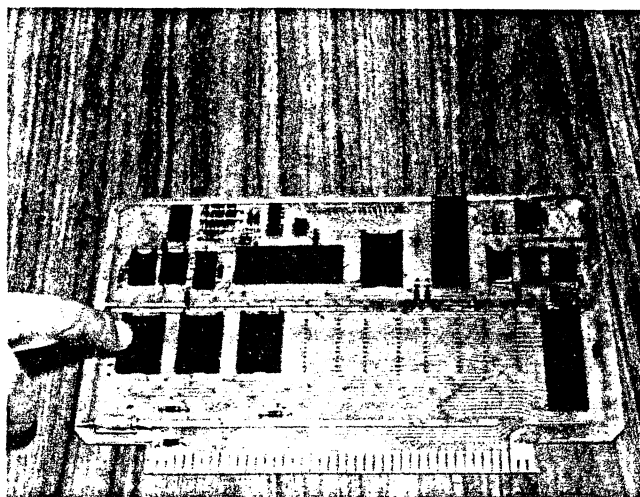
The Motorola 6800 Evaluation Kit has provided Bob with the parts for his project's controller. The MIKBUG ROM loads his microprocessor with hex code sent over the RS-232 from the 4051.

The detector will fly with the experiment, delivering an analog signal proportionate to the number of cosmic rays striking its surface. This signal will be fed to an analog-to-digital converter; the digital equivalent is then relayed to the 6800. The 6800 will record the cosmic ray intensity data on a small magnetic tape unit, along with the time of the sensor readings. This data will then be analyzed, after the orbiter returns from its mission.

*** TEKTRONIX 4051 / M6800 ASSEMBLER OBJECT PROGRAM ***		
MEMORY ADDRESS (HEX)	MEMORY CONTENTS (HEX)	INSTRUCTION (MNEMONIC)
0000	97 34	STAA #34
0002	06 23	LDAA ##23
0004	18	ABA
0005	18	ABA
0006	3F	SMT
READY		

To overcome the frustrations of programming in hex code, Bob developed his own assembler on the 4051. He inputs to the 4051 in mnemonic code which the 4051 segments into hex, and transmits to the 6800 microprocessor in the controller.

While the experiment is in operation, the space shuttle orbiter will be pointed in several directions. Thus readings will relate to the many directions, or points in space. After the mission, NASA will publish a report showing where the orbiter was pointed at any given time. Since the tape recorder will have intensity data recorded along with reading time, the position information can be easily extrapolated. The time and intensity data will be used as input to the 4051, which will analyze the data and provide graphic analysis. The hope is that the graph will show the general direction of cosmic ray origin in space.



Bob indicates where his first ROM will plug into his controller. Following this will be other ROMs and some RAMs. When NASA flips the switch on his controller, it will jump to the first address in this ROM and begin the program controlling his experiment.

The 6800 can handle several different sensors at once. Therefore, Bob plans to fly five or six experiments; he's designing additional projects with the help of the Electrodynamics Laboratory. The versatility of the 4051 Graphic System will allow Bob to look at the data in several different ways.

"So," Bob says, "the 4051 is really the main show." It will help develop the programs easily and quickly, and will convert them to machine language for the 6800. The 6800 microprocessor, also the 4051's heart, will control the experiment in flight. (Bob notes that the 6800 will not only control his experiment, but will branch to sub-routines to service others' experiments.) And after the Space Shuttle flight returns, the 4051 will analyze the data and provide a detailed graphic analysis.

Scheduled for Space Shuttle flight number seven, the Weber High cannister, with Bob's controller, will fly early in the 1980's. When it returns, TEKniques will be there to cover the conclusion of this ambitious project.

Editor's Note: John Hess, Tektronix Sales Engineer at Salt Lake City, brought the achievements of Bob Wheeler to the attention of TEKniques' staff, and arranged for an interview in Salt Lake City with Bob and his father, Dr. Bob Wheeler. 📷

# Modeling and Reporting as Process Control Monitor

by Bob Cook

Previous issues of TEKniques have described the new TEKTRONIX Modeling and Reporting software. A specific application was described, along with a description of the capabilities and uses of the software package. The following is an example of a typical Modeling and Reporting installation in a process control environment, in this case, a sewerage treatment facility.

The agency in question resulted from the consolidation of nine city and 26 independent sanitary districts, and is responsible for all sewers and sewerage treatment within a growing county. The facility handles half of the waste in the county, and currently processes an average of 10 million gallons of wastewater daily. Plant capacity is 20 million gallons per day, and is expected to grow to 60 million gallons by the year 2000.

## Applying the Modeling and Reporting System

When the wastewater (sewerage) comes to the plant, it is full of suspended solids that must be removed; several steps are used to do this. After initial filtering and settling, the wastewater is placed in aeration basins, where microorganisms are introduced. These organisms digest the suspended organic solids, producing solids that will settle. The settled solids are referred to as sludge.

After the biological treatment stages, the wastewater passes to the chemical purification stages. There, chemicals such as lime and aluminum sulfate are introduced. These chemicals combine with chemical pollutants like phosphorus, causing them also to settle out as sludge.

In the next stage, the sludge by-products are thickened, dewatered, and incinerated. The remaining processed water passes through a final filter, and is then chlorinated and discharged into a nearby river, cleaner than the river itself.


The key aspect of this operation is sludge production and processing; it must be carefully monitored and controlled. The Modeling and Reporting system analyzes sludge and phosphorus removal throughout the several processing stages.

Readings for flow in the tanks are taken every midnight. The percentage of solids in the flow is checked every two hours. Without Modeling and Reporting, these readings were jotted down by hand on a form. Analysis was done manually when it was deemed necessary. Besides being subject to manual calculation errors, these analyses took as long as 30 hours to produce. As a result, they were done only when absolutely necessary.

At the same time, the treatment process is slow to respond to corrections. This makes it difficult to maintain stable operation **without** readily-available analysis of current status and trends. Modeling and Reporting provides an easy-to-use method of obtaining the needed analysis whenever desired, to help maintain the stable process. Graphics provides a superior way to visualize and track process trends.

With Modeling and Reporting, readings are easily entered into the system daily; analysis is available in a matter of hours. Reports are presented in neat hard copy output, instead of the old handwritten form. Modeling and Reporting improves the operation by providing timely decision data, with great time savings and without manual error.

Material savings from the stabilized process have not yet been quantified, but the time savings is easily calculated. The analysis that takes 30 hours by hand can be done in four with Modeling and Reporting. Using this calculation alone, at a standard hourly labor rate, the Modeling and Reporting System could pay for itself in less than 18 months. Plus, the graphic reports are quickly produced and easily interpreted.


The same kind of process control could be used in new water processing plants, or such heavy industries as electroplating, casting, chemical laboratories, and pulp and paper plants. They could also benefit from the time and money savings, coupled with enhanced performance. They're all made possible by the 4051 Graphic System, with the powerful Modeling and Reporting Software package. 

---

## TEKniques a Winner!

TEKniques recently took part in the annual Communications Competition sponsored by the Society for Technical Communications. We entered the regional competition sponsored by the Willamette Valley Chapter of the society, and came back with the first place position

in our category. Our entry has been forwarded to the national competition, where it will face other entries from electronics, medicine, forestry, and other industries.

We're very pleased with this achievement. Our winning entry would not have been possible without your interesting applications and tips, so we all share in this success. Thank you for the help! 

## \* Editor's Note

### Catalogs and Back Issues

Did you miss an issue of TEKniques, from Volume 1 or 2? Or perhaps you haven't yet gotten your copy of the 4051 Applications Library Program Catalog. We have catalogs and back issues of TEKniques on hand in the TEKniques office. If you'd like to receive a catalog, or have been wanting to find a copy of a previous issue of TEKniques, drop a note to the Applications Library serving you; Library addresses are located at the back of each TEKniques issue.

### Program Tip Exchange

Send in your programming tip. Any one of the following

4051 Applications Library programs\* will be yours when it's published. Simply jot down a brief description of the function, the code and your choice of program. Mail it to the 4051 Applications Library serving you; Library addresses are listed at the back of each TEKniques issue.

51/00-0101/0	51 00-5503 0
51/00-0702/0	51 00-7002 0
51/00-0715/0	51 00-8006 0
51/00-1401 0	51 00-9505 0
51 00-1402 0	51 00-9511 0
51 00-5401 0	51 00-9521 0

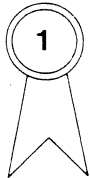
\*Documentation and listing only.



## Business Applications Contest Winners

The winners have been selected for the TEKniques business applications contest. The five winning entries are contained in the new abstracts section of this issue by TEKniques; the winners are listed below.

### First Place:



Dr. P.C. Holman has contributed programs and applications to TEKniques in previous issues. His winning entry is a collection of algorithms for business and accounting. See Abstract No. 51 00-0904 0.

### Second Place:



Robert S. Pilkington, of A.T. & T. Long Lines, Bedminster, N.J. contributed a program entitled "Y" Axis Graphs—12 Month Format. The program is very well documented and flowcharted, and makes excellent use of negative numbers. See Abstract No. 51/00-0905 0.

### Third Place:



Mallory M. Green, a computer specialist with the U.S. Department of Housing and Urban Development, Washington, D.C. has also contributed to previous issues of TEKniques. His third place winning entry is BARGRAPH II, which generates professional horizontal or vertical bar graphs in a simple interactive manner. It is further described in Abstract No. 51/00-0907/0.

### Fourth Place:




Mallory M. Green also took the fourth place honors with TIME SERIES II. It, like BARGRAPH II, is useful for business and general applications; both use the same data format, so they work interchangeably. Refer to Abstract No. 51 00-0906/0.

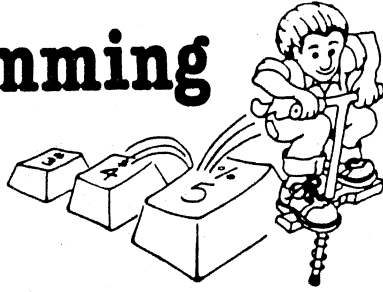
### Fifth Place:



R.J. Reimann is an Assistant Professor in the Department of Physics and Engineering as Boise State University, Boise, Idaho. His entry, Regular Plot, is a general graphics program developed for industrial market analysis. Previous contributions to TEKniques include the Graphics Demonstration for Astronomy and Physics. His prize winner is described in Abstract No. 51 00-0908/0.

Congratulations to all, and a big "Thank You!" to all who entered. 

# Programming Tips



## Off-Line Plotting

by Carl Dawson

Tektronix, Inc.

Off-line plotting speeds program execution and frees the 4051 for other tasks. During program run time, it's quicker to send the graphics commands to tape instead of sending them to the plotter with the attendant waiting while they are plotted. After the graphics data is generated and sent to tape, you can plan the plot files back from a TEKTRONIX 4924 tape unit to the 4662 Plotter. This technique is especially useful when producing multiple plots, or when several users share a single plotter.

### DAB and GDU

Off-line 4662 plot files require Data Byte Commands (DAB) and Graphic Display Units (GDU). DAB commands program the plotter by passing the command as part of the data. As a quick reference, the following is an abridged list of DAB commands.:

MOVE	M
DRAW	D
PRINT	P
HOME	H
ALPHAROTATE	R
ALPHASCALE	S
ALPHARESET	A
PROMPT LIGHT	T

User Data Units are defined by the WINDOW, VIEW-PORT, ROTATE and SCALE commands. Four BASIC keywords **transform** User Data Units into device dependent GDU's: MOVE DRAW, RMOVE and RDRAW. Thus a MOVE @1:X,Y will send the **transformed** X,Y coordinate to device 1.

To send transformed coordinates to tape requires specifying the secondary address (MSA).<sup>1</sup> If a secondary address is omitted, as it is in MOVE@1:X,Y, the 4051 automatically generates a secondary address that corresponds to the keyword. The previous command, therefore, internally looks like MOVE @1,21:X,Y. This default secondary addressing can be overridden.<sup>2</sup> MOVE @1,20:X,Y will actually execute a DRAW since the secondary address of 20 tells the peripheral device to DRAW.

If the default secondary address for MOVE (MSA=21) is

overridden with the secondary address for the PRINT operation (MSA=12), then MOVE@1,12:X,Y will **print** the **transformed** coordinates on the plotter surface beginning at the current pen position. To carry this example one step further, a MOVE@33,12:X,Y will **print** the **transformed** coordinates to the current file on the internal tape drive.

There is one limiting factor. The User Data Units specified as X,Y coordinates of the MOVE and DRAW statements **must lie within the boundaries of the WINDOW** coordinates. When a draw is clipped, either none or two X,Y coordinate pairs will be issued by the 4051. Consequently, the coordinates of points outside the window will not be consistent with the character commands being printed by the user on the tape.

### Plot File Format

Plot files, therefore, contain the appropriate plotter DAB commands and their associated data. Each value associated with a particular DAB command must be separated by a valid delimiter (space or comma) and each command must be followed by a valid terminator which may be one of the following:

1. An ETX byte (Control C)
2. A CR, comma, or space when the data sent to the Plotter is **numeric** and all expected data values have been received.

Two other terminators are valid in other modes of operation, but we'll ignore them since they aren't usable in the "off-line" plotting described here.

### Building the Plot Files

For off-line plotting, all plotter commands must be in the DAB format and all graphic coordinates in GDU's. A sequence of two BASIC statements specify first the DAB command followed by the transformed coordinate:

<sup>1</sup>A complete list of secondary addresses is on page B-18 of the 4051 Graphic System Reference Manual.

<sup>2</sup>Secondary addresses can be suppressed. PRINT @1,32:"H" sends the character "H" and a carriage return to the plotter without sending a secondary address. In this case the plotter treats it as a command (HOME). Complete information on I/O addressing can be found in the 4051 Graphic System Reference Manual beginning on page 7-9.



```

200 PRINT #33:"M";
210 MOVE #33,12:X,Y

```

Line 200 prints the DAB character for MOVE to the tape file; the automatic carriage return (CR) is suppressed. If the CR were allowed, it would terminate the DAB command before the coordinates were specified. Line 210 transforms the X,Y coordinate into GDU's and prints these values to the tape file. In addition, a CR is generated by the print operation in line 210 thereby properly terminating the DAB command.

The following example builds a plot file containing a sine wave and a title. Note that all coordinates of the MOVE and DRAW commands lie within the WINDOW boundaries.

```

100 REM - PROGRAM TO BUILD PLOT FILE
110 INIT
120 WINDOW 0,2*PI,-1,1
130 VIEWPORT 0,150,0,100
140 FIND 1
150 REM - "MOVE" command sequence
160 PRINT #33:"M";
170 MOVE #33,12:0,0
180 FOR X=0 TO 2*PI STEP 2*PI/100
190 REM - "DRAW" command sequence
200 PRINT #33:"D";
210 DRAW #33,12:X,SIN(X)
220 NEXT X
230 REM - "MOVE" command sequence with GDU coordinate
240 PRINT #33:"M50,98"
250 REM - "PRINT" - command sequence
260 PRINT #33:"PSINE WAVEC"
270 REM - "HOME"
280 PRINT #33:"H"
290 CLOSE
300 END

```

Since a CR is considered valid data by the print "P" command, note that the ETX ("C") character was used as the terminator in line 260.

### Creating Axes

The AXIS command cannot be used to generate axes in a plot file. The AXIS command causes the 4051 to generate a series of moves and draws, sending this information to the plotting device with the appropriate secondary addresses. Therefore, the AXIS command has to be interpreted by the 4051 as it is being executed.

However, axes can be generated in a plot file by writing a short subroutine which performs the same functions as the BASIC keyword "AXIS". This code is discussed in the **PLOT 50 Introduction To Graphic Programming in BASIC** in the section entitled "AXIS: Without Axis Command."

### Off-Line Plotting

The plot file tape can now generate a graph on the plotter without the 4051. Connect a 4924 tape unit to the Plotter through the GPIB. Set the Plotter for "LISTEN ONLY" and "DAB" modes. That is, the four hexadecimal switches on the rear panel of the Plotter labeled "A B C D" should

be set to "1 C 0 1." Put the 4924 tape unit in manual mode by releasing the ON LINE switch (ON LINE button should be up, not depressed). Rewind the plot file tape by pressing the REWIND button and locate the desired file(s) with the SKIP FORWARD or SKIP BACK buttons. Start the plot transfer by pressing the TALK button on the 4924. When the end of file is encountered, the 4924 will stop and the plot can be removed from the 4662 Plotter.

### Off-Line Plotting Monitored

You may wish to prompt the operator to change paper on the plotter. The following small program will enable the 4924 to signal the 4051 when it has finished transmitting to the plotter. The 4924 talks directly to the plotter which frees the 4051 to execute any program not requiring the GPIB. When the end of file is detected by the 4924, it generates a service request (SRQ) and sets its error number to 12. The 4051 detects the SRQ and signals the operator. (ON SRQ THEN ...).

For this method to work, the plotter must be set for both MSA and DAB operations by setting the hex switches on the back panel to "1 0 0 1." The 4924 must be placed ON LINE by depressing the ON LINE button. The program sets up the transfer from 4924 to plotter, waits for the SRQ, then prompts the operator to remove the plot.

```

100 REM MONITORED OFF-LINE PLOTTING
110 INIT
120 ON SRQ THEN 500
130 REM 4924 is device 2, plot on file 1
140 FIND #2:1
150 REM Set up "peripheral to peripheral" transfer
160 REM Note "X" sets 4051 off the GPIB
170 WBYTE #66,122,33:
180 REM Wait (or execute a BASIC program)
190 WAIT
200 REM Continue, end of file detected
210 PRINT "GGG Please remove plot GGG"
220 END
500 REM SRQ service routine
510 POLL 1,J12
520 IF I=1 THEN 550
530 PRINT "GGPOLL ERROR"
540 STOP
550 REM Get tape unit error number
560 INPUT #2,30:E
570 IF E<>12 THEN 610
580 REM Untalk & unlisten peripherals
590 WBYTE #95,63:
600 RETURN
610 PRINT "GGGTAPE ERROR NUMBER "IE
620 STOP

```

## Keyed File Access on the 4907

by Jack Gilmore

Tektronix, Inc.

The 4907 brings a random access file and record capability to the 4051. Although 4907 files are accessed by name, random access of records still requires the use of cardinal numbers (1, 2, ..., number of records allocated).

Sometimes it would be more desirable to access a record based upon an alpha string such as a name. Non-

sequential groups of numbers, such as a social security number, could make a desirable access key. Some combination of the two, such as street address, might also be useful.

A method that constructs and searches symbol tables in compilers and assemblers is "hashing." The hashing method maps the set of keys into a restricted range of numbers or "hash codes." In our case, hashing transforms the key field such as a last name into a numeric value representing 1, ..., number of records.

### Linear Hashing

The hashing function is chosen so that:

1. The computation of the hashing function is rapid;
2. The mapping of all keys to hash codes is uniformly distributed over the range of hash codes.

These codes are then used as record numbers to access the data file in a random fashion.

To enter a new record, the following procedure is used:

1. The hashing routine computes a record number in the file from the key.
2. If the key-field (first) in that record has the initialized value (alpha-blank or numerical-zero), the key, followed by the rest of the data for that record, is written at that position.
3. If the key-field is the same as the key for the record being inserted, the record already exists.
4. If the key-field is different than the key for the new record, the hash code (record number) is incremented by one. If it's greater than the number of records in the file, it is reset to one. A check is made to see if the record numbers have completely wrapped around once. If so, the file is full and error action is taken. If not, steps 2 through 4 are repeated.

To recover a record takes a similar operation:

1. The hashing routine computes a record number.
2. If the key-field (first) is blank or zero, then the record doesn't exist.
3. If the key-field is the same as the key for the record for which you are searching—Eureka! —it's been found.
4. If the key-field is different, the record number is increased and tested in the same manner as inserting a new record. Steps 2 through 4 are repeated and an error return is taken if the record does not exist (exhaustive search).

The following routines implement keyed file access for an alpha key.

```

100 KILL 'DATA'
110 M=0
120 N1=0
130 N2=200
140 N3=0
150 GOSUB 4000
160 OPEN 'DATA' FILE 'DATA'
170 FOR J=1 TO 10
180 K=INT(RND*100)
190 FOR I=1 TO 4
200 C=CHR$(INT(RND*(26+100)))
210 P=P*100+I
220 NEXT I
230 GOSUB 4030
240 WRITE #1:P:K
250 NEXT J
260 GOSUB 4500
270 GO TO 170
4000 REM INITIALIZE FILE STRUCTURE
4010 REM N0 IS THE NUMBER OF RECORDS
4020 REM N1 IS THE RECORD LENGTH
4030 CREATE 'DATA' FILE 'DATA'
4040 OPEN 'DATA' FILE 'DATA'
4050 FOR N=1 TO N0
4060 WRITE #1:K:K
4070 NEXT N
4080 CLOSE #1
4090 RETURN
4100 REM HASH ROUTINE
4110 REM X = HASH CODE
4120 REM AS = INPUT KEY
4130 N=LEN(AS)
4140 FOR I=1 TO LEN(AS)-MIN(4,N)
4150 N=N*256+ASC(AS(I))
4160 N=N*256
4170 N=N*256+ASC(AS(I+1))
4180 NEXT I
4190 IF N AND THEN 4010
4200 RETURN
4210 REM FIND RECORD NO. FOR NEW RECORD
4220 GOSUB 4120
4230 N=N+1
4240 N=N%4000
4250 N=N+1
4260 READ #1:K:K
4270 IF K=AS THEN 4290
4280 N=N+1
4290 N=N%4000
4300 N=N+1
4310 IF N AND THEN 4240
4320 PRINT 'FILE FULL'
4330 STOP
4340 IF N AND THEN 4260
4350 N=1
4360 GO TO 4240
4370 REM FIND RECORD FROM KEY
4380 GOSUB 4120
4390 N=N
4400 READ #1:K:K
4410 IF K=AS THEN 4430
4420 RETURN
4430 N=N+1
4440 IF N AND P=AS THEN 4470
4450 PRINT 'RECORD DOES NOT EXIST'
4460 STOP
4470 IF N AND THEN 4400
4480 N=1
4490 GO TO 4400
4500 REM SUMMARIZE STATISTICS
4510 PRINT 'FILE IS 'INT(N0/N1*100) '% FULL'
4520 PRINT 'AVERAGE READS PER ENTRY 'INT((N1/N0)*100)
4530 RETURN

```

*Sample program to test key subroutines*

*Set all keys to blank so we can tell that a record is unused*

*For best results modify and test to make sure this routine produces uniform distributed numbers for your particular keys.*

$$\text{Key} = \text{Length} \times \sum_{i=1}^n \text{ASC}(K(i)) \times 2^{(i-1)}$$

*Calculate hash*

*Save it to compare for exhaustive search*

*Number of record entered*

*Read key*

*Check for empty record*

*Success, found empty slot*

*Write, so try next record*

*Number of extra reads*

*Is key wrapped around once?*

*More sophisticated recovery technique could be used*

*Check for key overflow*

*Reset key*

*Get next record*

*Hash key*

*Save key for exhaustive search*

*Read key from file*

*Compare keys*

*Found it!*

*Check next record*

*Check for blank record or exhaustive search*

*More sophisticated recovery could be used*

*Check for key overflow*

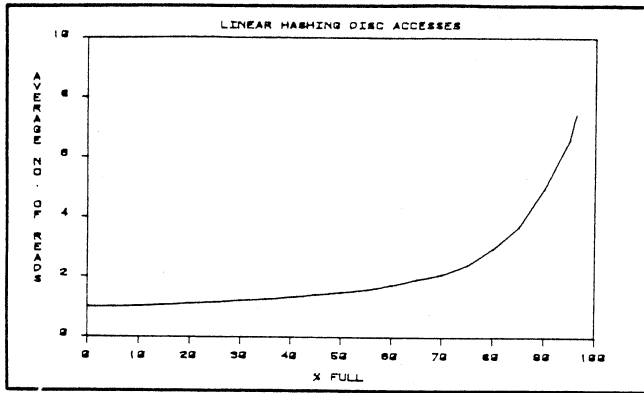
*Reset key*

*Get next record*

The following are advantages of the linear hashing method: quick access to a record, not having to read in the entire record to check if it's the right one, no tables to keep in memory, the routines to implement the technique are small.

However, once the file is created and initialized, it cannot be expanded; to do so would change the mapping of keys-to-record placement. This could be a major disadvantage in some applications although a program could be written to copy a file to a larger one, recomputing record placement in the process.

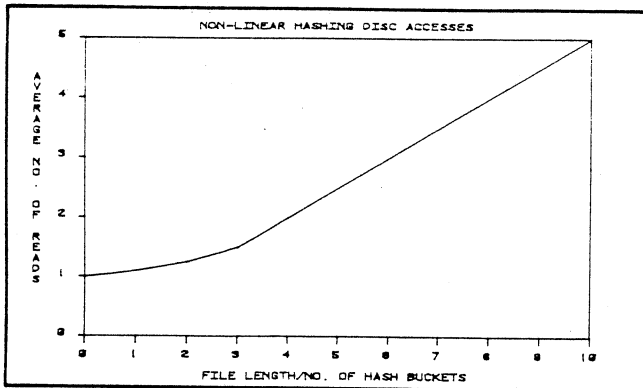
Another drawback is this: as the file fills up, the average number of reads to locate the desired record goes up dramatically, as shown in the following graph:



### Non-Linear Hashing

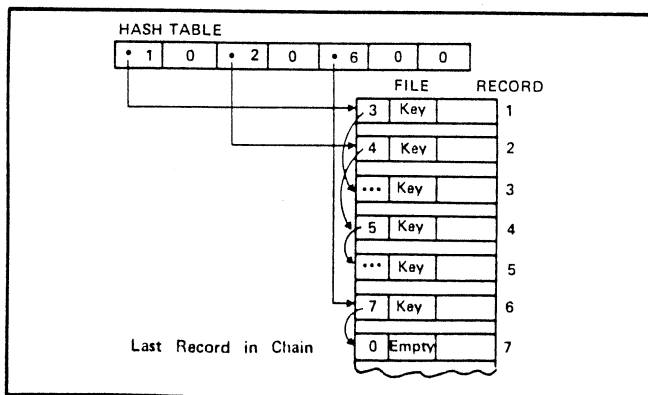
Non-linear hashing is another method of implementing keyed file access. It overcomes some of the linear hashing constraints, although there are tradeoffs. Non-linear hashing allows file expansion, and the records within the file do not have to be pre-written with null keys.

However, the routines are more complicated. A table containing record numbers must be retained in memory when the file is open and saved on the disc when the file is closed. When adding to a file, an entire record has to be read and modified. This technique has another performance characteristic demonstrated in the following graph:



If the file contains a large number of records, the hash table length could become unreasonably large to decrease the average number of accesses per read.

The following diagram illustrates the data structure of non-linear hashing.



The following routines implement non-linear hashing. Although the hash tables are stored as the first record in the file, they could be stored in a separate file. If stored separately, the hash table should be chosen independent of the record length. Each entry could also be in a separate record, so the entire hash table needn't be in memory at one time. This would require one additional disc access.

```

PROGRAM TO TEST NON-LINEAR HASHING
...
INITIALIZE FILE
...
WRITE RECORD #
...
SEARCH FOR RECORD #
...

```

With the above information, tradeoffs can be made between linear and non-linear hashing for any number of records. To calculate the number of hash buckets for any

size file as a function of the number of disc accesses, the following empirical equation is given:

$$\frac{S}{2*N} = B$$

where B is number of hash buckets  
S is number of records  
N is number of reads

For linear hashing, the following empirical equation seems to work:

$$\frac{2(1+N)S}{N} = A$$

where A is allocated size  
S is number of records used  
N is number of reads

## Packing Integers

by Ted Webber

Laurie, Montgomerie & Pettit Pty. Ltd.  
Sydney, Australia

The following program saves memory when you're storing integers consisting of six digits or less. The integers are packed into one real number, complete with signs, in the format:

C = ±A.nB where A and B are each 6 (or less) digit integers and n = 0, 1 or 2 to indicate the sign of B

The sign of B is stored as the first digit after the decimal point in C so that 0 = -, 1 = 0 and 2 = +. FNB encodes N1 into the integer part of N. FNC encodes N2 into the decimal part of N. FND decodes N2 and FNE decodes N1.

The first routine generates two arrays of 500 random integers, which are then merged into one array of 500 real numbers. Partial output is illustrated in Fig. 1.

```

100 INIT
110 DEF FNA(C)=ABS(C)-INT(ABS(C))+1.0E-8
120 DEF FNB(C)=SGN(C+0.1)*ABS(C)+FNA(D)
130 DEF FNC(C)=SGN(D+0.1)*ABS(C)+FNA(D)
140 DEF FND(C)=SGN(10*FNA(C)-1)*INT(0.5+1000000*FNA(10*FNA(C)))
150 DEF FNE(C)=INT(ABS(C))*SGN(C)
160 DIM N(200),N1(200),N2(200)
170 N=0
180 R=RND(-1)
190 Z=1000000
200 FOR I=1 TO 200
210 Z=-Z
220 N1(I)=INT(RND(I)*Z)
230 N2(I)=INT(RND(I)*Z)
240 NEXT I
250 FOR I=1 TO 200
260 D=N(I)
270 N(I)=FNB(N1(I))
280 D=N(I)
290 N(I)=FNC(N2(I))
300 NEXT I
310 PRINT "GGG"
320 DELETE N1,N2
325 DIM N1(200),N2(200)
330 FOR I=1 TO 200
340 N1(I)=FNB(N1(I))
350 N2(I)=FNC(N2(I))
360 NEXT I
370 PRINT "GGG"
380 END

```

The second routine packs the integers as they're input, first N1 (statements 230-250) and then N2 (statements 260-280). Once the real number array is completed, either N1 or N2 may be changed without re-computing the other. Figure 2 shows random generation of N1 and N2 using the second routine, and the consequent output by changing N1 only through deletion of statement 260-280

and running from line 210. Figure 3 repeats this process, but changes N2 only.

N1			
-148669	492183	-969949	643168
-848569	68575	-955443	148942
-534638	928948	-516749	482861
-887424	488469	-952989	985838
-69920	143861	-631351	317737
-464459	49393	-117675	483381
-661828	95754	-379642	353821
-796499	888369	-571236	824686
N2			
-87777	489883	-475883	68715
-485666	97823	-284454	752745
-436177	57870	-29368	423783
-535559	462188	-626662	415676
-368811	572686	-15186	788173
-654777	968185	-338661	559363
-268461	718938	-948991	66773
-241958	217464	-68729	238988
N			
-148669.008778	492183.2489	-969948.847588	643168.286872
-848569.848567	68575.2897823	-955443.828445	148942.275275
-534638.843618	928948.285787	-516749.882937	482861.24237
-887424.833556	488469.246218	-952989.862666	985838.241568
-69920.836811	143861.257269	-631351.881519	317737.278817
-464459.865478	49393.2968185	-117675.833866	483381.25936
-661828.826846	95754.2718938	-379642.894899	353821.286677
-796499.824195	888369.221746	-571236.886873	824686.223899
DECODE N1			
-148669	492183	-969949	643168
-848569	68575	-955443	148942
-534638	928948	-516749	482861
-887424	488469	-952989	985838
-69920	143861	-631351	317737
-464459	49393	-117675	483381
-661828	95754	-379642	353821
-796499	888369	-571236	824686
DECODE N2			
-87777	489883	-475883	68715
-485666	97823	-284454	752745
-436177	57870	-29368	423783
-535559	462188	-626662	415676
-368811	572686	-15186	788173
-654777	968185	-338661	559363
-268461	718938	-948991	66773
-241958	217464	-68729	238988

Fig. 1. N1 and N2 are shown before being merged into one array (N). N illustrates the packing routine result. The decoded arrays depict the integrity of the routine.

```

100 INIT
110 DEF FNA(C)=ABS(C)-INT(ABS(C))+1.0E-8
120 DEF FNB(C)=SGN(C+0.1)*ABS(C)+FNA(D)
130 DEF FNC(C)=SGN(D+0.1)*ABS(C)+FNA(D)
140 DEF FND(C)=SGN(10*FNA(C)-1)*INT(0.5+1000000*FNA(10*FNA(C)))
150 DEF FNE(C)=INT(ABS(C))*SGN(C)
160 DIM N(500)
170 N=0
180 R=RND(-1)
190 Z=1000000
200 FOR I=1 TO 500
210 Z=-Z
220 N1=INT(RND(I)*Z)
230 D=N(I)
240 N(I)=FNB(N1)
250 N2=INT(RND(I)*Z)
260 D=N(I)
270 N(I)=FNC(N2)
280 N(I)=FND(N2)
290 N3=FNE(N1)
300 N4=FNE(N2)
310 PRINT #32: USING "2<9D>9D.7D2<9D>":N1,N2,N(I),N3,N4
320 NEXT I
330 END

```

N1	N2	N(I)	N1 DECODE	N2
-636881	-663989	-636881.866398	-636881	-663989
398792	28762	398792.2828768	398792	28762
-511826	-37583	-511826.8837588	-511826	-37583
928238	548888	928238.2548888	928238	548888
-177612	-478969	-177612.8478978	-177612	-478969

DEL268,280

N1	N2	N(I)	N1 DECODE	N2
543978	-478969	543978.866398	543978	-663989
-436839	-478969	-436839.2828768	-436839	28762
711657	-478969	711657.8837588	711657	-37583
-997186	548888	-997186.2548888	-997186	548888
698221	-478969	698221.8478978	698221	-478969

Fig. 2. The first run shows the integers as they've been input, packed and decoded. In the second run, N1 array has been changed, packed and decoded.

N1	N2	N(I)	N1 DECODE	N2
-581295	-583887	-581295.8503818	-581295	-583887
271969	886484	271969.2806488	271969	886484
-942176	-849438	-942176.8849448	-942176	-849438
617385	979883	617385.2979888	617385	979883
-264712	-128915	-264712.8128928	-264712	-128915

DEL238,250

N1	N2	N(I)	N1 DECODE	N2
-264712	924541	-264712.2924548	-264712	924541
-264712	271969	-264712.851358	-264712	271969
-264712	551745	-264712.2551758	-264712	551745
-264712	-958616	-264712.8958618	-264712	-958616
-264712	553118	-264712.2553118	-264712	553118

Fig. 3. Deleting statements 230 through 250 allows N2 only to be changed.

## 4907 Data File Storage

by Chuck Eng and Ed Mitchell

Tektronix, Inc.

The 4907 has four data file structures:

- Binary random access
- Binary sequential access
- ASCII random access
- ASCII sequential access

(This discussion does not include ASCII and binary program files.)

Both the random and sequential files have the same physical structure (256-byte blocks), but random access files are broken down into logical records. These logical records have pointers to the beginning of each record.

### ASCII Random Access Files

ASCII random access files must be initialized. That is, each record in the file must be completely filled before the next record can be accessed. A quick routine to do this is shown on page F-2 of the "4907 File Manager Operator's Manual." Notice that one byte of each record is allocated for the CR; therefore, ASCII random records are initialized with a string of record length minus 1 byte (the carriage return is placed in the last byte).

Printing of ASCII random records must be done accurately. Record boundaries are not detected when ASCII records are printed to or input from. If there is more data than record space, the data will print over the next record. And, when a file is opened, and an input operation is executed that brings in more data items than contained in one record, the following record(s) will be input.

The 4907 dynamically extends files. As ASCII random files are extended, the records must be completely filled or subsequent records cannot be accessed. If you are letting the 4907 automatically extend your ASCII random file, be sure the data string length equals record length minus 1; pad the data string with blanks if necessary.

### Binary Random Files

While Binary random access file records don't have to be initialized in the same manner as ASCII (completely filled), something must be written to a binary record before the subsequent record can be accessed. The above mentioned routine on page F-2 writes 3 blanks to each binary record.

Record boundaries are detected on binary writes and reads; therefore, if too much data is written or read for the record size, an error message is generated.

## Storage Space

Data cannot be added to random records; updating a record requires rewriting the entire record. Also individual random records cannot be enlarged. So knowing data storage space requirements is important.

Both sequential and random access files are expanded automatically as space is required. Random expansion records are the same length as those originally created. Sequential file expansion is in units of 256 byte blocks.

The following table capsulizes the storage information:

4907 Data File Storage	Binary		ASCII	
	Random	Sequential	Random	Sequential
Record Initialization	No, but records filled in order	N/A	Yes, (record length minus 1)	N/A
Strings: Overhead:	4 bytes per string plus 1 byte per record	5 bytes per string	1 byte per record	1 byte per string
Per character:	1 byte	1 byte	1 byte	1 byte
Numeric Data: Overhead:	1 byte per record	1 byte per record	1 byte per record	1 byte per record
Per value:	9 bytes	9 bytes	1 byte	1 byte
End of Record Separator Detection	Yes	N/A	No	N/A
End of File Marks	Yes	Yes	Yes	Yes

## Coordinate Transformation

by James R. Umdenstock

City of Tulsa, Oklahoma

The City of Tulsa is presently assembling a graphic data system that includes all major buildings, streets, water and sewer lines, address centroids (building centers) and the like. This will be a major data system for use by all city departments.

One of the problems associated with constructing such a data base is that separate and detached surveys and maps will meet harmoniously, without gaps or overlaps. Therefore, we have developed a routine which converts points on the digitizer to state plane coordinates.

A map may be placed anywhere on the Summagraphics digitizer table interfaced to the 4051 Graphic System. As the ground points are digitized, the 4051 quickly converts them to state plane coordinates and stores them on tape. The data is then transmitted to the host computer over the Option 1 Data Communications Interface.

Since state plane coordinates are an established and understood system, this is a very practical program for land mapping use.

```

10 REM ***** SPDS RENDER & TRANSFORMATION PROGRAM
11 REM *****
12 REM ***** JIMDENYOK CITY OF TUGSA 4 JAN 79
13 REM *****
14 REM *****
15 REM *****
16 REM *****
17 REM *****
18 REM *****
19 REM *****
20 REM *****
21 REM *****
22 REM *****
23 REM *****
24 REM *****
25 REM *****
26 REM *****
27 REM *****
28 REM *****
29 REM *****
30 REM *****
31 REM *****
32 REM *****
33 REM *****
34 REM *****
35 REM *****
36 REM *****
37 REM *****
38 REM *****
39 REM *****
40 REM *****
41 REM *****
42 REM *****
43 REM *****
44 REM *****
45 REM *****
46 REM *****
47 REM *****
48 REM *****
49 REM *****
50 REM *****
51 REM *****
52 REM *****
53 REM *****
54 REM *****
55 REM *****
56 REM *****
57 REM *****
58 REM *****
59 REM *****
60 REM *****
61 REM *****
62 REM *****
63 REM *****
64 REM *****
65 REM *****
66 REM *****
67 REM *****
68 REM *****
69 REM *****
70 REM *****
71 REM *****
72 REM *****
73 REM *****
74 REM *****
75 REM *****
76 REM *****
77 REM *****
78 REM *****
79 REM *****
80 REM *****
81 REM *****
82 REM *****
83 REM *****
84 REM *****
85 REM *****
86 REM *****
87 REM *****
88 REM *****
89 REM *****
90 REM *****
91 REM *****
92 REM *****
93 REM *****
94 REM *****
95 REM *****
96 REM *****
97 REM *****
98 REM *****
99 REM *****
100 REM *****
101 REM *****
102 REM *****
103 REM *****
104 REM *****
105 REM *****
106 REM *****
107 REM *****
108 REM *****
109 REM *****
110 REM *****
111 REM *****
112 REM *****
113 REM *****
114 REM *****
115 REM *****
116 REM *****
117 REM *****
118 REM *****
119 REM *****
120 REM *****
121 REM *****
122 REM *****
123 REM *****
124 REM *****
125 REM *****
126 REM *****
127 REM *****
128 REM *****
129 REM *****
130 REM *****
131 REM *****
132 REM *****
133 REM *****
134 REM *****
135 REM *****
136 REM *****
137 REM *****
138 REM *****
139 REM *****
140 REM *****
141 REM *****
142 REM *****
143 REM *****
144 REM *****
145 REM *****
146 REM *****
147 REM *****
148 REM *****
149 REM *****
150 REM *****
151 REM *****
152 REM *****
153 REM *****
154 REM *****
155 REM *****
156 REM *****
157 REM *****
158 REM *****
159 REM *****
160 REM *****
161 REM *****
162 REM *****
163 REM *****
164 REM *****
165 REM *****
166 REM *****
167 REM *****
168 REM *****
169 REM *****
170 REM *****
171 REM *****
172 REM *****
173 REM *****
174 REM *****
175 REM *****
176 REM *****
177 REM *****
178 REM *****
179 REM *****
180 REM *****
181 REM *****
182 REM *****
183 REM *****
184 REM *****
185 REM *****
186 REM *****
187 REM *****
188 REM *****
189 REM *****
190 REM *****
191 REM *****
192 REM *****
193 REM *****
194 REM *****
195 REM *****
196 REM *****
197 REM *****
198 REM *****
199 REM *****
200 REM *****
201 REM *****
202 REM *****
203 REM *****
204 REM *****
205 REM *****
206 REM *****
207 REM *****
208 REM *****
209 REM *****
210 REM *****
211 REM *****
212 REM *****
213 REM *****
214 REM *****
215 REM *****
216 REM *****
217 REM *****
218 REM *****
219 REM *****
220 REM *****
221 REM *****
222 REM *****
223 REM *****
224 REM *****
225 REM *****
226 REM *****
227 REM *****
228 REM *****
229 REM *****
230 REM *****
231 REM *****
232 REM *****
233 REM *****
234 REM *****
235 REM *****
236 REM *****
237 REM *****
238 REM *****
239 REM *****
240 REM *****
241 REM *****
242 REM *****
243 REM *****
244 REM *****
245 REM *****
246 REM *****
247 REM *****
248 REM *****
249 REM *****
250 REM *****
251 REM *****
252 REM *****
253 REM *****
254 REM *****
255 REM *****
256 REM *****
257 REM *****
258 REM *****
259 REM *****
260 REM *****
261 REM *****
262 REM *****
263 REM *****
264 REM *****
265 REM *****
266 REM *****
267 REM *****
268 REM *****
269 REM *****
270 REM *****
271 REM *****
272 REM *****
273 REM *****
274 REM *****
275 REM *****
276 REM *****
277 REM *****
278 REM *****
279 REM *****
280 REM *****
281 REM *****
282 REM *****
283 REM *****
284 REM *****
285 REM *****
286 REM *****
287 REM *****
288 REM *****
289 REM *****
290 REM *****
291 REM *****
292 REM *****
293 REM *****
294 REM *****
295 REM *****
296 REM *****
297 REM *****
298 REM *****
299 REM *****
300 REM *****
301 REM *****
302 REM *****
303 REM *****
304 REM *****
305 REM *****
306 REM *****
307 REM *****
308 REM *****
309 REM *****
310 REM *****
311 REM *****
312 REM *****
313 REM *****
314 REM *****
315 REM *****
316 REM *****
317 REM *****
318 REM *****
319 REM *****
320 REM *****
321 REM *****
322 REM *****
323 REM *****
324 REM *****
325 REM *****
326 REM *****
327 REM *****
328 REM *****
329 REM *****
330 REM *****
331 REM *****
332 REM *****
333 REM *****
334 REM *****
335 REM *****
336 REM *****
337 REM *****
338 REM *****
339 REM *****
340 REM *****
341 REM *****
342 REM *****
343 REM *****
344 REM *****
345 REM *****
346 REM *****
347 REM *****
348 REM *****
349 REM *****
350 REM *****
351 REM *****
352 REM *****
353 REM *****
354 REM *****
355 REM *****
356 REM *****
357 REM *****
358 REM *****
359 REM *****
360 REM *****
361 REM *****
362 REM *****
363 REM *****
364 REM *****
365 REM *****
366 REM *****
367 REM *****
368 REM *****
369 REM *****
370 REM *****
371 REM *****
372 REM *****
373 REM *****
374 REM *****
375 REM *****
376 REM *****
377 REM *****
378 REM *****
379 REM *****
380 REM *****
381 REM *****
382 REM *****
383 REM *****
384 REM *****
385 REM *****
386 REM *****
387 REM *****
388 REM *****
389 REM *****
390 REM *****
391 REM *****
392 REM *****
393 REM *****
394 REM *****
395 REM *****
396 REM *****
397 REM *****
398 REM *****
399 REM *****
400 REM *****
401 REM *****
402 REM *****
403 REM *****
404 REM *****
405 REM *****
406 REM *****
407 REM *****
408 REM *****
409 REM *****
410 REM *****
411 REM *****
412 REM *****
413 REM *****
414 REM *****
415 REM *****
416 REM *****
417 REM *****
418 REM *****
419 REM *****
420 REM *****
421 REM *****
422 REM *****
423 REM *****
424 REM *****
425 REM *****
426 REM *****
427 REM *****
428 REM *****
429 REM *****
430 REM *****
431 REM *****
432 REM *****
433 REM *****
434 REM *****
435 REM *****
436 REM *****
437 REM *****
438 REM *****
439 REM *****
440 REM *****
441 REM *****
442 REM *****
443 REM *****
444 REM *****
445 REM *****
446 REM *****
447 REM *****
448 REM *****
449 REM *****
450 REM *****
451 REM *****
452 REM *****
453 REM *****
454 REM *****
455 REM *****
456 REM *****
457 REM *****
458 REM *****
459 REM *****
460 REM *****
461 REM *****
462 REM *****
463 REM *****
464 REM *****
465 REM *****
466 REM *****
467 REM *****
468 REM *****
469 REM *****
470 REM *****
471 REM *****
472 REM *****
473 REM *****
474 REM *****
475 REM *****
476 REM *****
477 REM *****
478 REM *****
479 REM *****
480 REM *****
481 REM *****
482 REM *****
483 REM *****
484 REM *****
485 REM *****
486 REM *****
487 REM *****
488 REM *****
489 REM *****
490 REM *****
491 REM *****
492 REM *****
493 REM *****
494 REM *****
495 REM *****
496 REM *****
497 REM *****
498 REM *****
499 REM *****
500 REM *****
501 REM *****
502 REM *****
503 REM *****
504 REM *****
505 REM *****
506 REM *****
507 REM *****
508 REM *****
509 REM *****
510 REM *****
511 REM *****
512 REM *****
513 REM *****
514 REM *****
515 REM *****
516 REM *****
517 REM *****
518 REM *****
519 REM *****
520 REM *****
521 REM *****
522 REM *****
523 REM *****
524 REM *****
525 REM *****
526 REM *****
527 REM *****
528 REM *****
529 REM *****
530 REM *****
531 REM *****
532 REM *****
533 REM *****
534 REM *****
535 REM *****
536 REM *****
537 REM *****
538 REM *****
539 REM *****
540 REM *****
541 REM *****
542 REM *****
543 REM *****
544 REM *****
545 REM *****
546 REM *****
547 REM *****
548 REM *****
549 REM *****
550 REM *****
551 REM *****
552 REM *****
553 REM *****
554 REM *****
555 REM *****
556 REM *****
557 REM *****
558 REM *****
559 REM *****
560 REM *****
561 REM *****
562 REM *****
563 REM *****
564 REM *****
565 REM *****
566 REM *****
567 REM *****
568 REM *****
569 REM *****
570 REM *****
571 REM *****
572 REM *****
573 REM *****
574 REM *****
575 REM *****
576 REM *****
577 REM *****
578 REM *****
579 REM *****
580 REM *****
581 REM *****
582 REM *****
583 REM *****
584 REM *****
585 REM *****
586 REM *****
587 REM *****
588 REM *****
589 REM *****
590 REM *****
591 REM *****
592 REM *****
593 REM *****
594 REM *****
595 REM *****
596 REM *****
597 REM *****
598 REM *****
599 REM *****
600 REM *****
601 REM *****
602 REM *****
603 REM *****
604 REM *****
605 REM *****
606 REM *****
607 REM *****
608 REM *****
609 REM *****
610 REM *****
611 REM *****
612 REM *****
613 REM *****
614 REM *****
615 REM *****
616 REM *****
617 REM *****
618 REM *****
619 REM *****
620 REM *****
621 REM *****
622 REM *****
623 REM *****
624 REM *****
625 REM *****
626 REM *****
627 REM *****
628 REM *****
629 REM *****
630 REM *****
631 REM *****
632 REM *****
633 REM *****
634 REM *****
635 REM *****
636 REM *****
637 REM *****
638 REM *****
639 REM *****
640 REM *****
641 REM *****
642 REM *****
643 REM *****
644 REM *****
645 REM *****
646 REM *****
647 REM *****
648 REM *****
649 REM *****
650 REM *****
651 REM *****
652 REM *****
653 REM *****
654 REM *****
655 REM *****
656 REM *****
657 REM *****
658 REM *****
659 REM *****
660 REM *****
661 REM *****
662 REM *****
663 REM *****
664 REM *****
665 REM *****
666 REM *****
667 REM *****
668 REM *****
669 REM *****
670 REM *****
671 REM *****
672 REM *****
673 REM *****
674 REM *****
675 REM *****
676 REM *****
677 REM *****
678 REM *****
679 REM *****
680 REM *****
681 REM *****
682 REM *****
683 REM *****
684 REM *****
685 REM *****
686 REM *****
687 REM *****
688 REM *****
689 REM *****
690 REM *****
691 REM *****
692 REM *****
693 REM *****
694 REM *****
695 REM *****
696 REM *****
697 REM *****
698 REM *****
699 REM *****
700 REM *****
701 REM *****
702 REM *****
703 REM *****
704 REM *****
705 REM *****
706 REM *****
707 REM *****
708 REM *****
709 REM *****
710 REM *****
711 REM *****
712 REM *****
713 REM *****
714 REM *****
715 REM *****
716 REM *****
717 REM *****
718 REM *****
719 REM *****
720 REM *****
721 REM *****
722 REM *****
723 REM *****
724 REM *****
725 REM *****
726 REM *****
727 REM *****
728 REM *****
729 REM *****
730 REM *****
731 REM *****
732 REM *****
733 REM *****
734 REM *****
735 REM *****
736 REM *****
737 REM *****
738 REM *****
739 REM *****
740 REM *****
741 REM *****
742 REM *****
743 REM *****
744 REM *****
745 REM *****
746 REM *****
747 REM *****
748 REM *****
749 REM *****
750 REM *****
751 REM *****
752 REM *****
753 REM *****
754 REM *****
755 REM *****
756 REM *****
757 REM *****
758 REM *****
759 REM *****
760 REM *****
761 REM *****
762 REM *****
763 REM *****
764 REM *****
765 REM *****
766 REM *****
767 REM *****
768 REM *****
769 REM *****
770 REM *****
771 REM *****
772 REM *****
773 REM *****
774 REM *****
775 REM *****
776 REM *****
777 REM *****
778 REM *****
779 REM *****
780 REM *****
781 REM *****
782 REM *****
783 REM *****
784 REM *****
785 REM *****
786 REM *****
787 REM *****
788 REM *****
789 REM *****
790 REM *****
791 REM *****
792 REM *****
793 REM *****
794 REM *****
795 REM *****
796 REM *****
797 REM *****
798 REM *****
799 REM *****
800 REM *****
801 REM *****
802 REM *****
803 REM *****
804 REM *****
805 REM *****
806 REM *****
807 REM *****
808 REM *****
809 REM *****
810 REM *****
811 REM *****
812 REM *****
813 REM *****
814 REM *****
815 REM *****
816 REM *****
817 REM *****
818 REM *****
819 REM *****
820 REM *****
821 REM *****
822 REM *****
823 REM *****
824 REM *****
825 REM *****
826 REM *****
827 REM *****
828 REM *****
829 REM *****
830 REM *****
831 REM *****
832 REM *****
833 REM *****
834 REM *****
835 REM *****
836 REM *****
837 REM *****
838 REM *****
839 REM *****
840 REM *****
841 REM *****
842 REM *****
843 REM *****
844 REM *****
845 REM *****
846 REM *****
847 REM *****
848 REM *****
849 REM *****
850 REM *****
851 REM *****
852 REM *****
853 REM *****
854 REM *****
855 REM *****
856 REM *****
857 REM *****
858 REM *****
859 REM *****
860 REM *****
861 REM *****
862 REM *****
863 REM *****
864 REM *****
865 REM *****
866 REM *****
867 REM *****
868 REM *****
869 REM *****
870 REM *****
871 REM *****
872 REM *****
873 REM *****
874 REM *****
875 REM *****
876 REM *****
877 REM *****
878 REM *****
879 REM *****
880 REM *****
881 REM *****
882 REM *****
883 REM *****
884 REM *****
885 REM *****
886 REM *****
887 REM *****
888 REM *****
889 REM *****
890 REM *****
891 REM *****
892 REM *****
893 REM *****
894 REM *****
895 REM *****
896 REM *****
897 REM *****
898 REM *****
899 REM *****
900 REM *****
901 REM *****
902 REM *****
903 REM *****
904 REM *****
905 REM *****
906 REM *****
907 REM *****
908 REM *****
909 REM *****
910 REM *****
911 REM *****
912 REM *****
913 REM *****
914 REM *****
915 REM *****
916 REM *****
917 REM *****
918 REM *****
919 REM *****
920 REM *****
921 REM *****
922 REM *****
923 REM *****
924 REM *****
925 REM *****
926 REM *****
927 REM *****
928 REM *****
929 REM *****
930 REM *****
931 REM *****
932 REM *****
933 REM *****
934 REM *****
935 REM *****
936 REM *****
937 REM *****
938 REM *****
939 REM *****
940 REM *****
941 REM *****
942 REM *****
943 REM *****
944 REM *****
945 REM *****
946 REM *****
947 REM *****
948 REM *****
949 REM *****
950 REM *****
951 REM *****
952 REM *****
953 REM *****
954 REM *****
955 REM *****
956 REM *****
957 REM *****
958 REM *****
959 REM *****
960 REM *****
961 REM *****
962 REM *****
963 REM *****
964 REM *****
965 REM *****
966 REM *****
967 REM *****
968 REM *****
969 REM *****
970 REM *****
971 REM *****
972 REM *****
973 REM *****
974 REM *****
975 REM *****
976 REM *****
977 REM *****
978 REM *****
979 REM *****
980 REM *****
981 REM *****
982 REM *****
983 REM *****
984 REM *****
985 REM *****
986 REM *****
987 REM *****
988 REM *****
989 REM *****
990 REM *****
991 REM *****
992 REM *****
993 REM *****
994 REM *****
995 REM *****
996 REM *****
997 REM *****
998 REM *****
999 REM *****
1000 REM *****

```

The logical unit number for the digitizer is 8.  
This printout is from the host computer, using the Option 1.

## Data Transfer Through the RS-232 by Mark Mehall

Tektronix, Inc.  
Chicago

Two small programs allow one user (User 1) to control tape-to-tape transfer of data to or from another 4051. This is especially helpful if the other 4051 user (User 2) is unfamiliar with data communication procedures.

### Preparation

Each user connects their Option 1 to their modem, through the RS-232 cable supplied with the 4051. Both modems are set either to full duplex or to half duplex; the 4051s and the modems are then powered up.

```

100 REM PROGRAM TO SET 4051 OPT. 1 PARAMETERS
110 REM FOR TAPE TRANSFER FROM ANOTHER 4051
120 INIT
130 REM SET L8 TO CTRL-L (NEWPAGE)
140 L8=CHR(12)
150 REM SET J8 TO CTRL-J (LINEFEED)
160 J8=CHR(10)
170 REM SET G8 TO CTRL-G (BELL)
180 G8="GGGG"
190 REM SET FIRST FILE TO 0
200 F1=0
210 PRINT L8;"          4051 TO 4051 TAPE TRANSFER"J8J8J8
220 PRINT "THE OTHER 4051 USER SHOULD USE THE DEFAULT PARAMETERS."
230 PRINT "AND SHOULD BE IN TERMINAL MODE."J8J8
240 REM INITIALIZE THE COMM. INTERFACE
250 CALL "CMINIT"
260 REM SET RSTRIM TO MATCH DEFAULT RSTRIM PARAMETERS
270 REM SET R8 TO CTRL-R (DC2)
280 R8=CHR(18)
290 REM SET T8 TO CTRL-T (DC4)
300 T8=CHR(20)
310 REM SET D8 TO CTRL-D (EOT)
320 D8=CHR(4)
330 CALL "RSTRIM",R8,T8,D8
340 REM SET EOLCHR TO SUPPRESS CARRIAGE RETURNS
350 CALL "EOLCHR",13,""
360 REM SET RCLRF TO PRINTED CONTROL CHARACTERS
370 CALL "RCLRF",1,2,1
380 REM INITIALIZE THE INTERFACE
390 PRINT #4,30;
400 REM INITIALIZE FILE NUMBER
410 F1=0
420 PRINT "HOW MANY FILES ARE BEING TRANSMITTED? "IG8I
430 INPUT F
440 FOR I=1 TO F
450 REM FIND THE TAPE FILE TO BE TRANSFERRED
460 PRINT "WHAT TAPE FILE IS TO BE TRANSMITTED? "
470 PRINT "THE LAST FILE WAS "IF1" "IG8I
480 INPUT F1
490 FIND F1
500 PRINT
510 REM SEND INSTRUCTIONS TO THE OTHER USER
520 REM SET E8 TO CTRL-E (ESC)
530 E8=CHR(27)
540 PRINT #4;E8;I8I8;"          4051 TO 4051 TAPE TRANSFER"
550 PRINT #4;J8I8I8;"Use Function Key 13 (shift 3) to find the file"
560 PRINT #4;J8I8I8;"to store the data. Enter the file number."
570 PRINT #4;J8I8I8;"Press RETURN. Then press Function Key 3."G8
580 PRINT #4;J8I8I8;"The information on your screen will overprint."
590 PRINT #4;J8I8I8;"that's normal."J8I8J8
600 REM WAIT FOR A TRANSMISSION FROM THE OTHER 4051 (SHDSTG)
610 INPUT #4;A8
620 REM DO THE TRANSFER
630 CALL "DTSEND"
640 PRINT "FILE TRANSMITTEDGG."
650 PRINT #4;J8I8I8I8I8;"File received. "IG8I8J8
660 NEXT I
670 PRINT #4;J8I8I8;"Final file received. "I
680 PRINT #4;J8I8I8;"Pick up your headset. "G8
690 END

```

Fig. 1. Routine to control transfer to another 4051 over the Option 1.

```

100 REM PROGRAM TO SET 4051 OPT. 1 PARAMETERS
110 REM FOR TAPE TRANSFER FROM ANOTHER 4051
120 REM SET L8 TO CTRL-L (NEWPAGE)
130 L8=CHR(12)
140 REM SET J8 TO CTRL-J (LINEFEED)
150 J8=CHR(10)
160 REM SET G8 TO CTRL-G (BELL)
170 G8=CHR(7)
180 REM SET FIRST FILE TO 0
190 F1=0
200 PRINT L8;"          4051 TO 4051 TAPE TRANSFER"J8I8J8
210 PRINT "THE OTHER 4051 USER SHOULD USE THE DEFAULT PARAMETERS."
220 PRINT "AND SHOULD BE IN TERMINAL MODE."J8J8
230 REM INITIALIZE THE COMM. INTERFACE
240 CALL "CMINIT"
250 REM SET RSTRIM TO MATCH DEFAULT RSTRIM PARAMETERS
260 REM SET R8 TO CTRL-R (HUL)
270 R8=CHR(18)
280 REM SET S8 TO CTRL-S (DC3)
290 S8=CHR(19)
300 REM SET D8 TO CTRL-D (EOT)
310 D8=CHR(4)
320 CALL "RSTRIM",R8,S8,D8
330 REM SET EOLCHR TO SEND NOTHING AS SHDSTG
340 CALL "EOLCHR",13,""
350 REM SET RCLRF TO PRINTED CONTROL CHARACTERS (FOR LINE FEEDS)
360 CALL "RCLRF",1,2,1
370 REM SET FRCR (FORCE CARRIAGE RETURN) TO 0 (NO)
380 CALL "DELAYS",0,0,0
390 REM INITIALIZE THE INTERFACE
400 PRINT #4,30;
410 PRINT "HOW MANY FILES ARE BEING RECEIVED? "IG8I
420 INPUT F
430 FOR I=1 TO F
440 REM FIND THE TAPE FILE TO STORE IT
450 PRINT "L,WHAT TAPE FILE IS TO RECEIVE DATA? "
460 PRINT "THE LAST FILE WAS "IF1" "IG8I
470 INPUT F1
480 FIND F1
490 PRINT
500 REM SEND INSTRUCTIONS TO THE OTHER USER
510 REM SET E8 TO CTRL-E (ESC)
520 E8=CHR(27)
530 PRINT #4;E8;I8I8;"          4051 TO 4051 TAPE TRANSFER"
540 PRINT #4;J8I8I8I8I8;"Use Function Key 13 (shift 3) to find the file"
550 PRINT #4;J8I8I8I8I8;"to be transferred. Enter the file number."
560 PRINT #4;J8I8I8I8I8;"Press RETURN. Then press Function Key 4."
570 PRINT #4;J8I8I8I8I8;"The last file transferred was "IF1I8G8
580 PRINT #4;J8I8I8I8I8;"The information on your screen will overprint."
590 PRINT #4;J8I8I8I8I8;"that's normal."J8I8J8
600 REM DO THE TRANSFER
610 CALL "DTRECV"
620 PRINT "FILE RECEIVEDGG."
630 PRINT #4;J8I8I8I8I8;"File transmitted. "IG8I8J8
640 NEXT I
650 PRINT #4;J8I8I8I8I8;"Final file transmitted. "I
660 PRINT #4;J8I8I8I8I8;"Pick up your headset. "G8
670 END

```

Fig. 2. Routine to control transfer from another 4051 over the Option 1.

The user who is receiving the data marks a tape for the number and size of files required for the incoming data. User 1 loads the applicable program below (sending or receiving) into 4051 memory. User 2 types in CALL "CMINIT" on the second 4051 and presses the RETURN key, then types in CALL "TERMIN" followed by a RETURN.

## Data Transfer

Establish telephone contact (either one can dial the other). One user sets their modem to answer (ANS) mode and lays their headset into the modem cradle (note where the cord end is placed). The other user sets their modem to originate (ORIG) and listens for the frequency signal; then sets their headset into the modem cradle. When contact is established, the carrier light on the modem will come on; the 4051 will stop flashing its lights.

Now the program in User 1 4051 memory is run. Users each respond to the prompts on their 4051 screen, and the data transfer is carried out. When transfer is completed, load one of the files into the receiving 4051 to verify.

A related and informative article is contained in TEKniques Vol. 1 No. 4, "4051s Talk To Each Other."

## Changing 4051 Parameters to Read Different Tape Formats

by Aaron Eisenbach

Tektronix, Inc.  
Baltimore, MD

The 4051 can easily adapt its ASCII input format requirements to the ASCII output formats used by different peripheral devices. A customer recently logged data on the Tektronix 4923, and then read it into the 4051 using the following routine.


Statement 120 changes the status byte for the internal magnetic tape unit so it can read the 128 byte length, no

checksum, no header format of the 4923. The next steps determine the record separator, end of file mark, and incoming character(s) to be deleted. After the alternate parameters are input, statement 230 instructs the microprocessor to use these when the "%" sign is used in place of the "@" sign on INPUT, OLD or APPEND commands.

The rest of the routine reads the tape and resets the status bytes.

```
100 PRINT "LG% INSERT DATA TAPE AND PRESS (RETURN)%"
110 INPUT T%
120 PRINT "33:0:1,1,1"
130 PRINT "JG% USE THE DECIMAL EQUIVALENTS OF THE"
140 PRINT "JG% ASCII CHARACTERS FOR THE FOLLOWING INPUTS"
150 PRINT "JJG% RECORD SEPARATOR ? : "
160 INPUT A1
170 PRINT "JG% END OF FILE MARK ? : "
180 INPUT A2
190 PRINT "JG% CHARACTER TO BE DELETED ? (ENTER 128 IF NONE) : "
200 INPUT A3
210 PRINT "JG% DATA FILE # ? : "
220 INPUT F%
230 PRINT "37:0:A1,A2,A3
240 PAGE
250 ON EOF (0) THEN 300
260 FIND F
270 INPUT 33:A0
280 PRINT A0
290 GO TO 270
300 PRINT "37:26:0
310 PRINT "33:0:0,0,0
320 PRINT "JGDONE"
```

Caution should be used when specifying an alternate record separator. If an ASCII data string contains both Carriage Return characters and the alternate record separator character, logical records could be lost. To avoid this, specify the character to be deleted (statement 190) as "13." This will delete all incoming Carriage Returns but will read all logical records.

For a complete discussion on magnetic tape status parameters, see the "4051 Graphic System Reference Manual," pages 2-19 to 2-21. Check pages 2-25 to 2-30 for detailed information on processor status parameters. 


## Basic Bits



## Program Byte Counter

by Leo J. LaFrance

New Mexico State University  
Las Cruces, NM

This routine quickly determines the minimum space required by an ASCII program file. It analyzes a file already on tape and, if requested, will re-mark the file and re-store the program. Note that the file should be the last one on the tape. 

```
LIS
100 INIT
110 C$=CHR(13)
120 DIM A$(MEMORY-300)
130 A$=""
140 ON EOF (0) THEN 230
150 PRINT "Insert tape and input number of file "
160 PRINT "to be analyzed. "
170 INPUT F
180 FIND F
190 INPUT 33:R$
200 R$=R$C$
210 A$=REP(R$,1+LEN(A$),0)
220 GO TO 190
230 PRINT "JASCII file requires "ILEN(A$)" bytes."
240 PRINT "Minimum is 768 bytes."
250 PRINT "If you want the file re-sized, enter "
260 PRINT "YES." CAUTION: YOUR TAPE WILL BE "
270 PRINT "RE-MARKED. "
280 INPUT C$
290 IF C$(">YES") THEN 340
300 FIND F
310 MARK 1,LEN(A$)+1
320 FIND F
330 PRINT 33:A$
340 END
```

# 4051 Applications Library Program Abstracts

## Order

Documentation and program listings of each program are available for a nominal charge. Programs will be put on tape for a small recording fee per program plus the charge for the tape cartridge. One tape will hold several programs. (The program material contained herein is supplied without warranty or representation of any kind. Tektronix, Inc. assumes no responsibility and shall have no liability, consequential or otherwise, of any kind arising from the use of this program material or any part thereof.)

## Domestic U.S. Prices:

Documentation and listings	\$15 per program
Recording Fee	2 per program
Tape Cartridge	26 per tape

## Contribute

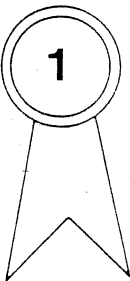
Contribute one program to the Library and receive three in exchange. Send in the membership card from your 4051 Graphic System Reference Manual to get the details. Or call us (503) 682-3411, ext. 2618.

## Forms

Please use the Applications Library Order Form. Order forms are included in the Membership Packet and are available from your local Tektronix Sales Engineer.

## Outside U.S.

Program contributions or orders outside the U.S. must be processed through the local Tektronix sales office or sent to one of the Libraries serving your area. See Library Addresses section.



**ABSTRACT NUMBER: 51/00-0904/0**

Title: **Business & Accounting Formulas**

Author: Dr. P.C. Holman  
University of Wisconsin  
Stevens Point, WI

Memory Requirement: 32K

Statements: 7698

Files: 19 ASCII Program

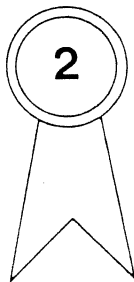
A tutorial program containing formulas, statistics and tables in the following areas:

1. Simple Interest Formulas: A set of eight formulas used to compute simple interest.
2. Compound Amount Formulas: A set of programs determining the dollar amount that an account or loan is worth now, or would be worth at some future time.
3. Annuities: A set of programs determining the value of an annuity. They handle any kind of annuity, as well as determining what one would have to pay if one set up an annuity.
4. Statistics; Averages and Variation Formulas: A set of programs for solving statistics most commonly used in business.
5. Statistics; Sampling: A set of programs determining statistical sampling parameters.
6. Statistics: Correlation: A set of programs determining the statistical correlation between sets of data.
7. Statistics: Index Number Formulas: A set of programs determining the index values for several sets of data.
8. Statistics: Time Series Formulas: A set of programs determining secular trends, seasonal changes, and cycles. Used to determine what quantity a firm should produce during given periods of time.
9. Inventory Formulas: A set of programs used for inventory assessment.
10. Depreciation Formulas: A set of programs allowing calculation of depreciation.
11. Finance Section: A set of formulas used for financial analysis.
12. Price Level Adjustments: A set of programs used to convert long term liabilities (i.e. depreciation, A, P) into current dollar values.
13. Marketing Formulas: A set of programs used to calculate the selling price a retailer or wholesaler should use to obtain the profit desired.
14. Cost and Production Formulas: A set of programs used to determine the cost and production relationships of various products and payroll billings.
15. Ratio Analysis Formulas: A set of programs presenting basic accounting ratios as well as time periods



for such things as production and inventory turn-over, and collection periods for various accounts.

16. Single Entry Formulas: A set of programs used to determine income statement entries for sales, purchases, expenses, and inventories.
17. Miscellaneous Formulas: A set of programs that are useful in business, but that do not belong in the major groupings previously described.



**ABSTRACT NUMBER: 51/00-0905/0**

Title: "Y" Axis Graph—12 Month Format

Author: Robert Pilkington  
AT&T Long Lines  
Bedminster, NJ

Memory Requirement: 24K

Peripherals: Optional—4610/4631 Hard Copy Unit  
Statements: 568

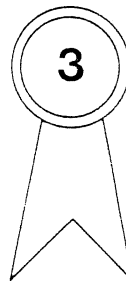
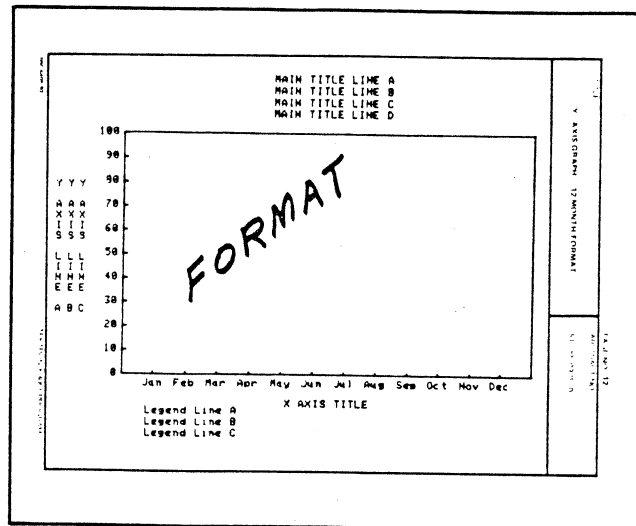
Files: 1 Program  
4 Data

A solid line curve, a dashed line curve, shaded bars, or any combination of the three can be created easily on a graph with titles and labels by using this monthly scale adjustable "Y" axis graphing program.

All titles and labels are automatically spaced and centered around the axis. Up to four main title lines can be entered with one "X" axis title, a three position "Y" axis title, and a legend label for each plot curve. The user can select bar shadings as well (empty bars, solid fill or cross hatch). A parameter and data listing can be accessed before or after the graph is displayed.

Data for all three plot modes can be added, deleted or changed. All data and parameters can be saved or retrieved from pre-marked binary files on the same 4051 data cartridge.

Limitations: "Y" axis tic labels up to six characters using whole numbers and seven characters using decimal numbers including decimal point and dollar sign. The scales must be positive numbers. The size and position of the graph on the screen is constant and stationary.



**ABSTRACT NUMBER: 51/00-0907/0**

Title: Bargraph II

Author: Mallory M. Green  
U.S. Dept. of H.U.D.  
Washington, D.C.

Memory Requirement: 32K

Peripherals: 4662 Plotter  
Optional—4907 File Manager

Statements: 1493

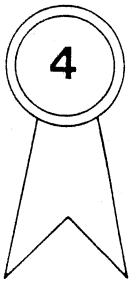
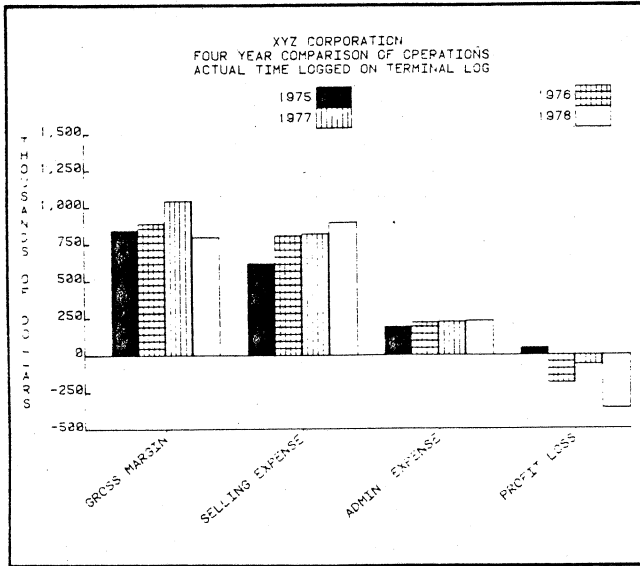
Files: 4 ASCII Program  
4 Binary Data

A program designed to generate professional horizontal or vertical formatted bar graphs in a simple interactive manner.

Features of the program are:

1. Horizontal and vertical bargraph formats.
2. User-prompted keyboard entry of all titles, labels and data.
3. Interactive modification of titles, labels, or data via user keys.
4. Storage of complete chart descriptions on either tape or disc files for future modification and plotting.
5. Output drawn on either the screen or 4662 Plotter.

- 4662 Plotter outputs in one or more colors.
- Automatic layout of centered and proportional charts.
- TIMESERIES II and BARGRAPH II are fully compatible.



**ABSTRACT NUMBER: 51/00-0906/0**

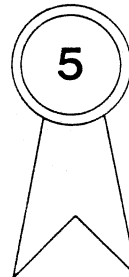
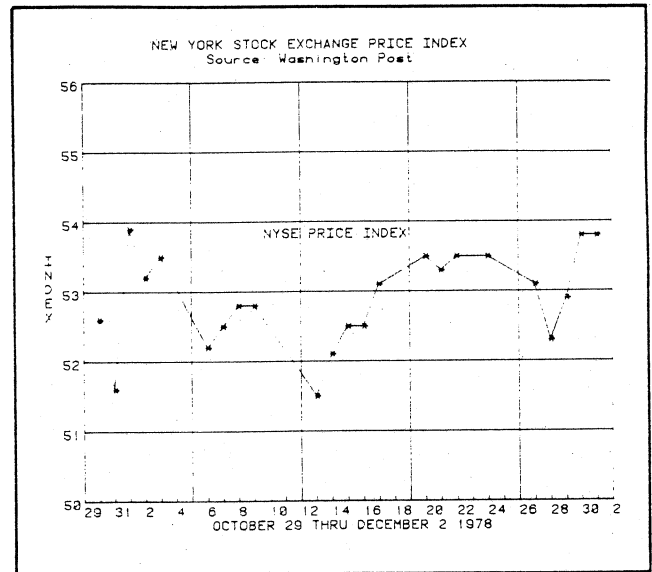
**Title: Timeseries II**  
**Author: Mallory M. Green**  
 U.S. Dept. of H.U.D.  
 Washington, D.C.  
**Memory Requirement: 32K**  
**Peripherals: 4952 Joystick or 4662 Plotter**  
 Optional—4907 File Manager  
**Statements: 1157**  
**Files: 3 ASCII Program**  
 4 Binary Data

A program designed to generate professional timeseries charts in a simple interactive manner.

Features of the program are:

- Can draw up to 6 lines for up to 35 time periods.
- Time periods such as seconds, minutes, hours, days, weeks, months or years can be used.

- User-prompted keyboard entry of titles, labels, and data.
- Allows interactive modification of titles, labels, and data via user keys.
- Chart descriptions can be stored on either tape or disc.
- Utilizes all 20 user-definable keys for maximum flexibility.
- TIMESERIES II and BARGRAPH II are fully compatible.



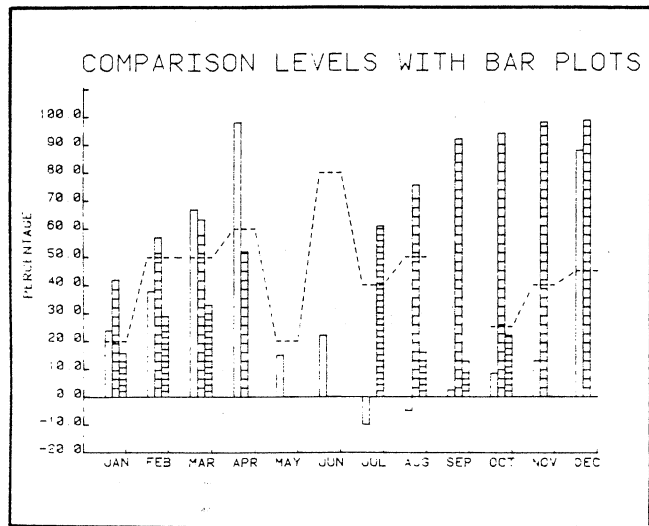
**ABSTRACT NUMBER: 51/00-0908/0**

**Title: Regular Plot**  
**Author: R.J. Reimann**  
**Memory Requirement: 32K**  
**Peripherals: 4662 Plotter**  
 Optional—4051R05  
**Statements: 862**  
**Files: 1 Binary Program**  
 1 Binary Data

A general graphics program developed for industrial market analysis. It provides line and bar plots with regularly spaced X-axis entries. Features include:

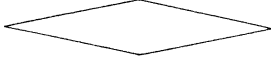
- Auto-scaling of the Y-axis.

2. Line addition/deletion capability.
3. Labels and data correction.
4. Allowance for negative data.
5. Aligned data tables.
6. Data storage/recall.
7. Linear regression.
6. Save and retrieve plots on either cartridge tape or disc in the same program.
7. Edit text at any time.
8. Alter retrieved plot and save new plot in same or separate file.
9. Graphics symbols available: Line, Box, or Diamond. Draw anywhere on plotter surface.



## SLIDEMAKER II

AN INNOVATOR IN VISUAL AIDS



**NEW!** FEATURES NEVER BEFORE SEEN IN SLIDES  
EXCEPT THOSE CREATED BY SPECIAL GRAPHICS  
ARTS EQUIPMENT

---

AVAILABLE NOW TO ALL 4051 USERS

**ABSTRACT NUMBER 51/00-9531/0**

Title: **Slidemaker II**  
 Author: John R. Carter  
 Tektronix, Santa Clara Annex  
 Memory Requirement: 32K  
 Peripherals: 4662 Plotter  
                   Optional—4907 File Manager  
 Statements: 679  
 Files: 1 ASCII Program  
        1 ASCII Text

Slidemaker II offers a highly versatile tool for creating professional and sophisticated presentation aids.

The main features are:

1. Standard type sizes selected with a single variable.
2. Tab selections that operate like a typewriter.
3. Variable type sizes and color changes possible on the same line of type, including choice of bold or normal type on the same line.
4. Fast line centering.
5. Input a whole page of text in one operation, with only one pen setting at the beginning.

## TEKTRONIX Announces 4050 Catalog: Vendor Supplied Software and Services

TEKTRONIX will be producing a catalog of software and programming services for the 4051 Graphic Computing System available from companies and consultants not associated with TEKTRONIX. The catalog will be sent directly to current 4051 users and to our worldwide sales organization.

Software products will be listed in the catalog by application area. Programming services for the 4051 will be listed by geographic location. Customers will contact the advertiser directly for additional information. *TEKTRONIX does not endorse or warrant any products or services listed.*

Listings are restricted to Software Packages written exclusively in 4051 BASIC.

For a direct avenue to the market for your 4051 software products and programming services, complete the enclosed form and return it to: Catalog Listing, Group 452, Tektronix, Inc., P.O. Box 500, Beaverton, OR 97077. More forms may be acquired by writing to this address.



**TEKTRONIX, INC.**  
Information Display Group  
Applications Library  
Group 451  
P.O. Box 500  
Beaverton, Oregon 97005

STELLA MCMORRAN  
60-307  
IF YOU HAVE MOVED  
PLEASE CALL 2618

MAR 26 1979

ADDRESS CORRECTION REQUESTED

---

## 4051 Applications Libraries

### Africa, Europe, Middle East

4051 Applications Library  
Tektronix International, Inc.  
European Marketing Centre  
"Bavinckstaete"  
Prof. Bavincklaan 5  
1183 at Amstelveen, The Netherlands

### Australia

4051 Applications Library  
Tektronix Australia Pty. Limited  
Sydney  
80 Waterloo Road  
North Ryde, N.S.W. 2113

### Canada

4051 Applications Library  
Tektronix Canada Ltd.  
P.O. Box 6500  
Barrie, Ontario  
Canada L4M 4V3

### Caribbean, Latin America and Far East (excl. Japan)

Ms. Bev Brandon, 73-312  
Export Marketing  
Tektronix, Inc.  
P.O. Box 500  
Beaverton, Oregon 97077  
U.S.A.

### Japan

4051 Applications Library  
Sony Tektronix Corporation  
9-31 Kitashinagawa-5  
Tokyo 141 Japan

### United States

4051 Applications Library  
Tektronix, Inc.  
Group 451  
P.O. Box 500  
Beaverton, Oregon 97077