

LAL		Revisions	216413	C
Rev.	Description	Chk.	Date	Approved
A	ENGRG RELEASE	EW	3/11/76	EW
B	ADDED 3M P/N FOR ITEMS 1,2,3,&4.	DN	7-26-76	DN
C	NOTE 8 J2-14 WAS; J2-13. ADDED WIRE LIST, SH 5.	DN	8-13-76	DN

**ENGINEERING  
RELEASE**

Dist. Code ALT

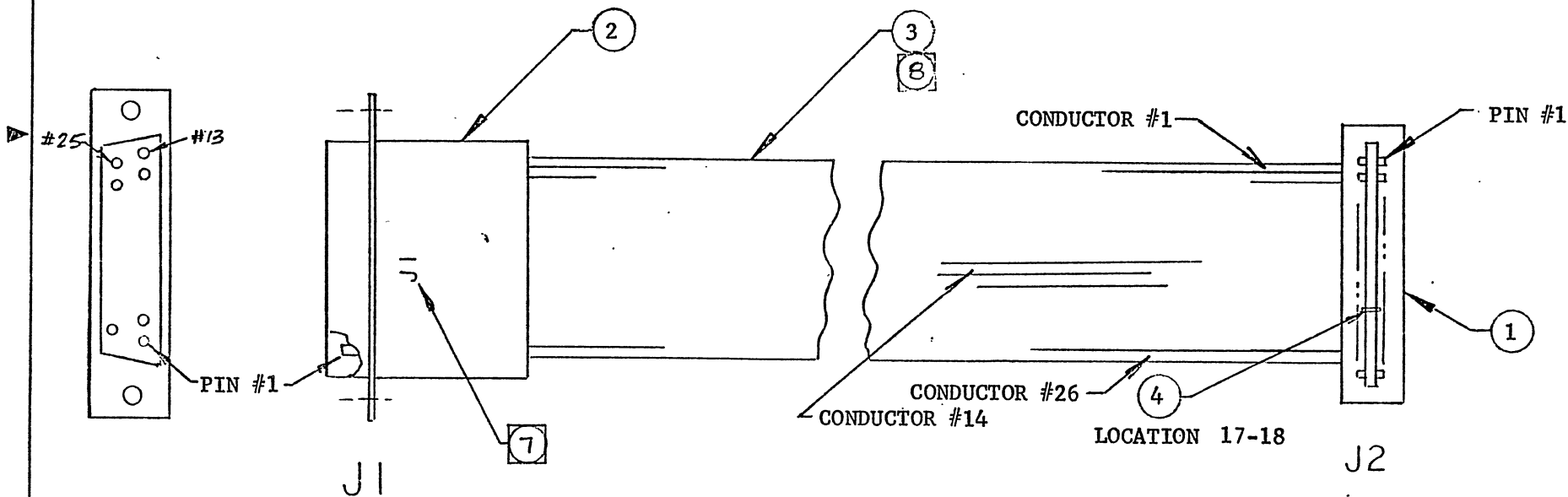
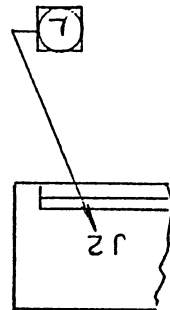
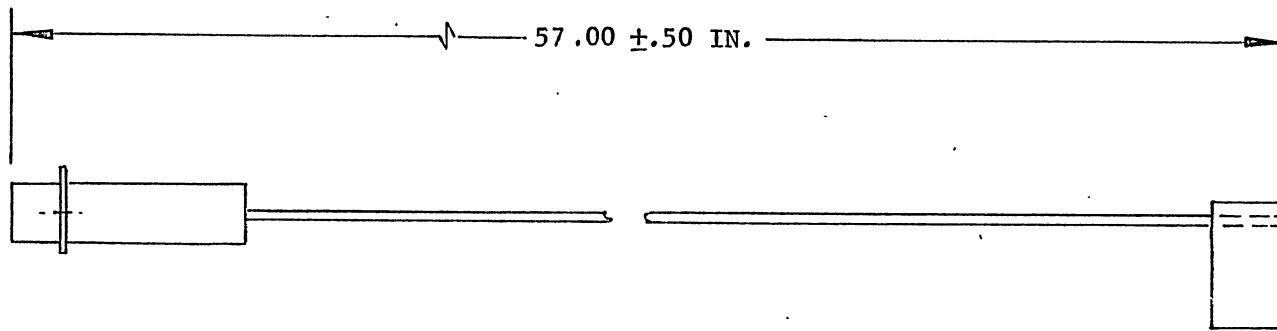
<p>These drawings and specifications, and the data contained therein, are the exclusive property of Xerox Corporation and/or Rank Xerox, Ltd. issued in strict confidence and shall not, without the prior written permission of Xerox Corporation or Rank Xerox, Ltd., be reproduced, copied or used for any purpose whatsoever, except the manufacture of articles for Xerox Corporation or Rank Xerox, Ltd.</p>	Notes Unless Specified	Drawn	<i>M. Williams</i>	3-17-76	<p>Xerox Corporation El Segundo, California</p> <p><b>XEROX</b></p> <p>ALTO II</p> <p>ASSEMBLY, CABLE - ETHERNET</p> <p>(INTERNAL)</p>					
	<p>1. Tolerances            .XX ±.030      Angular            .XXX ±.010    ±½°</p> <p>2. Break All Sharp Edges            .010 Approx.</p> <p>3. Mach. Surfaces      ✓</p> <p>4. All Dim. In Inches</p>	Check	<i>[Signature]</i>	3-1						
		Appr.	<i>[Signature]</i>	3-2						
		Material								
Model No. ALTO II	Finish	Code Ident.	18338		Size	A	Dwg. No.	216413	Change Letter	C
First Use EWO 7YF92		Scale	NONE		Do Not Scale Drawing		Sheet	1 OF 5		
Next Assy. First Use 216302										

NOTES: UNLESS OTHERWISE SPECIFIED

1. FABRICATE PER XEROX SPEC 209154.
2. CONNECTOR, EDGE (ITEM 1) MAY BE PURCHASED FROM AMP INC, HARRISBURG, PENN, P/N 88106-1 OR 3M COMPANY, ST PAUL, MINN, P/N 3462-0001. SEE NOTE 6.
3. CONNECTOR, BULK HEAD (ITEM 2) MAY BE PURCHASED FROM AMP INC, HARRISBURG, PENN, P/N 206653-1 OR 3M COMPANY, ST PAUL, MINN, P/N 3483-1000. SEE NOTE 6.
4. POLARIZING KEY (ITEM 4) MAY BE PURCHASED FROM AMP INC, HARRISBURG, PENN, P/N 88113-01 OR 3M COMPANY, ST PAUL, MINN, P/N 3439-0000. SEE NOTE 6.
5. RIBBON CABLE (ITEM 3) MAY BE PURCHASED FROM ANSLEY ELECTRONIC CORP, LOS ANGELES, CALIF P/N 171-26 OR 3M COMPANY, ST PAUL, MINN, P/N 3365-26. SEE NOTE 6.
6. CABLE ASSY TO BE FABRICATED USING COMPATIBLE PARTS: 3 M COMPANY CONNECTOR (ITEM 1 & 2), 3M COMPANY RIBBON CABLE (ITEM 3), & 3M POLARIZING KEY (ITEM 4) OR AMP CONNECTORS (ITEM 1 & 2), ANSLEY ELECTRONIC CORP RIBBON CABLE (ITEM 3), AMP POLARIZING KEY (ITEM 4).
7. MARK CHARACTERS .12 HIGH "NEWS GOTHIC"
8. WIRE CONDUCTOR #14 TERMINATED ON J2-14 NOT TERMINATED ON J1.

These drawings and specifications, and the data contained therein, are the exclusive property of Xerox Corporation and/or Rank Xerox, Ltd. issued in strict confidence and shall not, without the prior written permission of Xerox Corporation or Rank Xerox, Ltd., be reproduced, copied or used for any purpose whatsoever, except the manufacture of articles for Xerox Corporation or Rank Xerox, Ltd.	Title ALTO II  ASSEMBLY, CABLE - ETHERNET  (INTERNAL)		Xerox Corporation El Segundo, California	<b>XEROX</b>
			216413	C
	Sheet	2	of	5





These drawings and specifications, and the data contained therein, are the exclusive property of Xerox Corporation and/or Rank Xerox, Ltd. issued in strict confidence and shall not, without the prior written permission of Xerox Corporation or Rank Xerox, Ltd., be reproduced, copied or used for any purpose whatsoever, except the manufacture of articles for Xerox Corporation or Rank Xerox, Ltd.

Title  
**ALTO II**  
**ASSEMBLY, CABLE - ETHERNET**  
**(INTERNAL)**

Xerox Corporation El Segundo, California		<b>XEROX</b>
216413		
Sheet	3	of 5
		C





Wire	Term	From	To	Term	Type	Notes	Signal	Chg. Let.
1		J1 - 13	J2 - 1		3			
2		25	2					
3		12	3					
4		24	4					
5		11	5					
6		23	6					
7		10	7					
8		22	8					
9		9	9					
10		21	10					
11		8	11					
12		20	12					
13		7	13					
14		-	14			8		
15		19	15					
16		6	16					
17		18	17					
18		5	18					
19		17	19					
20		4	20					
21		16	21					
22		3	22					
23		15	23					
24		2	24					
25		14	25					
26		J1 - 1	J2 - 26		3			

These drawings and specifications, and the data contained therein, are the exclusive property of Xerox Corporation and/or Rank Xerox, Ltd. issued in strict confidence and shall not, without the prior written permission of Xerox Corporation or Rank Xerox, Ltd., be reproduced, copied or used for any purpose whatsoever, except the manufacture of articles for Xerox Corporation or Rank Xerox, Ltd.

1. Ref Item No's in Applicable Material List.
2. Ref Designations Are Abbreviated. Prefix Each Designation With:

Title

ALTO II  
ASSEMBLY, CABLE -  
ETHERNET (INTERNAL)

Xerox Corporation  
El Segundo, California

**XEROX**

216413

C

Sheet

5 of 5