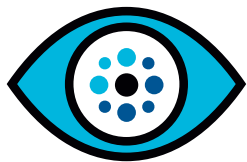


HP iLO Advanced helps SMBs with remote server administration



“Having to visit a remote server can easily cost \$500 to \$1,500 per incident. For many customers, iLO Advanced pays for itself on first use.”
—Jon Honeyball, President, Woodleyside IT Ltd.

Hello, what’s this?

When you’re not expecting anything and find something incredibly useful, that’s a good thing.

This was the case with Jon Honeyball. He’s president of a consultancy called Woodleyside IT Ltd. and also a contributing editor of *PC Pro*, a leading technical journal based in the United Kingdom. Honeyball’s roles include running a test lab and advising clients on strategic planning for the Microsoft® Windows® Server platform.

Recently he was hooking up some new HP ProLiant servers. Their destination was London, where they would be deployed remotely. He saw a spare Ethernet port that he wasn’t expecting. So he checked the manual to see what it could be.

That’s when he discovered HP iLO Advanced. “We plugged in, pulled it onto the VLAN, and opened up a whole new world of manageability for our remote servers—something that’s only been available for high-end data centers—until now,” he says.

An HP ProLiant secret?

HP Integrated Lights-Out (iLO) Advanced has been around for some time, Honeyball discovered, but it’s not as well known as it should be.

Many more users are aware of HP iLO Standard because it comes free with every ProLiant server. It enables basic remote access such as the ability to see system status and power on and off.

HP iLO Advanced *extends* those capabilities with a graphical user interface, full remote control of system KVM (remote console) regardless of server status, and the ability to remotely update server software and firmware over a network. Available at a minimal price, its license unlocks a number of features already present in the server itself.

Because Honeyball is a contributing editor of a major technical journal, he reacted by doing what he does best. He wrote about iLO Advanced in the “Real World Computing”¹ section of *PC Pro*.

¹ For the full article, visit <http://www.pcpro.co.uk/realworld/144339/on-the-rack/page2.html>

Jon Honeyball operates a virtual IT consultancy called Woodleyside IT Ltd. and is a contributing editor of *PC Pro*, the United Kingdom's leading tech journal. He's using HP iLO Advanced to administer servers more easily for Woodleyside IT's customers, eliminating data center visits to date and achieving payback on first use.

Objective

Simplify remote server administration, reducing or eliminating trips to the data center

Approach

Use HP iLO Advanced Pack to gain full remote control of system keyboard, video, and mouse (KVM) (remote console) regardless of server status, with the ability to remotely update server software and firmware over a network.

Business benefits

- No data center visits needed in six months since deploying HP iLO Advanced, down from 3 data center visits a year prior to that
 - Six server troubleshooting incidents fixed for clients without travel time
 - Projected \$500–\$1,500 saved per incident through remote server administration
 - Projected 100% iLO Advanced payback for customers on first incident
-

IT improvements

- Improved server uptime
- Faster time to value for server upgrades and patches
- Enhanced server security and data protection through reduced need to have physical access to server
- Enhanced troubleshooting capabilities with shared remote access and video replays

“Basically, there’s a small area on the (ProLiant) motherboard that’s purely dedicated to hardware management: it has its own Ethernet port and draws power from a line connected before the main power switch of the computer, so it always remains alive so long as the mains do. This web server (and there are other protocol interfaces) lets you see straight into the computer, even to view the POST boot screen. Want to flash the BIOS on the server? No problem, it can even manage this. All of this is delivered via a web-based interface, which is simplicity itself to use. Power down the server? No problem. Reconfigure the RAID array during the POST setup? Also, no problem. Install an OS from scratch? That’s a piece of cake, too. All I need to know is the IP address of the iLO2 port, and I’m home and dry.”

His discovery resonated among *PC Pro* readers. “I was flooded with dozens of e-mails from readers saying ‘Wow, we hadn’t spotted it either,’ or ‘That’s really neat, we need that as well.’”

See what you can do

Being a professional technology critic, Honeyball drilled down deep.

“So what do I get? Well, the web interface is split into System Status, Remote Console, Virtual Media, Power Management and Administration tabs, and each of these topics is split into its own set of subsections, so

System Health has tabs for Summary, Fans, Temperatures, Power, Processors, Memory and NIC. The Remote Console ... lets you watch the entire boot sequence, get into the BIOS and so forth. To be honest, I now find it neater than using a clunky old KVM switch, even for boxes that are sitting only a few feet away.”

Honeyball realized he had all the capability he needed to do a bare metal clean install, attach media, and boot from whatever type of device he wanted. “I can go right into the depths of the machine and reconfigure everything as if I was right in front of the box,” he says. “I can see a video replay of the last boot sequence or last fault sequence. I can reconfigure the server or remote install operating systems onto it. It’s almost as if it was local to my network, but it’s 300 miles away. And that’s a hugely compelling story.”

HP iLO Advanced also lets up to four users intelligently attend a remote administration session, with all users able to observe the session, and with the lead user able to delegate session control. And iLO remote users can be verified through integration with Microsoft Active Directory and Novell eDirectory.

There’s a way to explore all this functionality at no charge, Honeyball points out. A 60-day free trial license is available at www.hp.com/go/TryInsightControl.

“I’ve used iLO Advanced to help solve six server troubleshooting incidents, all without any travel time.”

Jon Honeyball, President, Woodleyside IT Ltd.



You have the power

One of the benefits of iLO Advanced, according to Honeyball, is being able to monitor power consumption in real time. “This is increasingly important when you’re renting rack space at a data center,” he observes. “Often you pay not just for space but for electricity, and in some cases, power can be more expensive than space. Being able to monitor power consumption means you can check what you’re being charged and negotiate about it.”

Be more resilient

iLO Advanced also helps small to medium-size businesses increase their resiliency. Many haven’t developed fault tolerance or disaster recovery capabilities beyond backing up to tape, Honeyball observes. “With iLO Advanced, they can be more confident about moving their existing servers—or new servers—off the premises and deploying them to managed rack spaces,” he says. “If something goes wrong with their main site, they’ve still got a whole pile of internal compute power that’s remote in racks somewhere in a locked cage. And if your own building goes up in flames tomorrow night, your business will still be there.”

Solution at a glance

Hardware

HP ProLiant DL360 G5 Server

Software

- HP Integrated Lights-Out 2 (iLO2) Advanced in each server
- Microsoft Windows Server 2003

Operating system

Microsoft Windows Server 2003

HP Services

HP service and support

Immediate payback

For the past six months, iLO Advanced has been helping Honeyball keep client businesses up and running despite his busy schedule. "I've used iLO Advanced to help solve six server troubleshooting incidents, all without any travel time," he says. In the year before using iLO Advanced, he had to make three data center visits. Since using it, he's had none.

"Having to visit a remote server can easily cost \$500 to \$1,500 per incident," Honeyball notes. "For many customers, iLO Advanced pays for itself on first use." All of his customers who hear about iLO Advanced get it.

There *are* other remote server management technologies out there, Honeyball points out. But they tend to be complicated and expensive, geared to companies that have hundreds or thousands of servers. "iLO Advanced is the sort of technology that today, in 2008, should be in every box. When you see its capability to do remote installs and remote wire ups and so forth, it feels like taking off tight boots. iLO Advanced is a real big step in terms of having confidence that you can manage servers that aren't physically in front of you."

To learn more about iLO Advanced Pack, visit www.hp.com/go/iLO or www.hp.com/go/InsightControl or contact your local HP representative. If you're a partner, visit the HP Partner Portal for more on this solution.

Technology for better business outcomes

To learn more, visit www.hp.com

© Copyright 2008 Hewlett-Packard Development Company, L.P. The information contained herein is subject to change without notice. The only warranties for HP products and services are set forth in the express warranty statements accompanying such products and services. Nothing herein should be construed as constituting an additional warranty. HP shall not be liable for technical or editorial errors or omissions contained herein.

Microsoft and Windows are U.S. registered trademarks of Microsoft Corporation.

4AA2-1964ENW, September 2008

