

How to move HP SIM SQL 2005 SP2 database

From local to remote



Introduction.....	2
Moving HP SIM SQL 2005 database from a local to a remote machine.....	11
Machine 2 HP SIM Installation Directory.....	23
For more information.....	24
Call to action	24

Introduction

This document details how to move an HP SIM SQL Server 2005 SP2 database from a local machine to a remote machine.

Enabling Remote Connection to SQL Server 2005 SP2

Allowing both SQL Server and Windows Authentication mode.

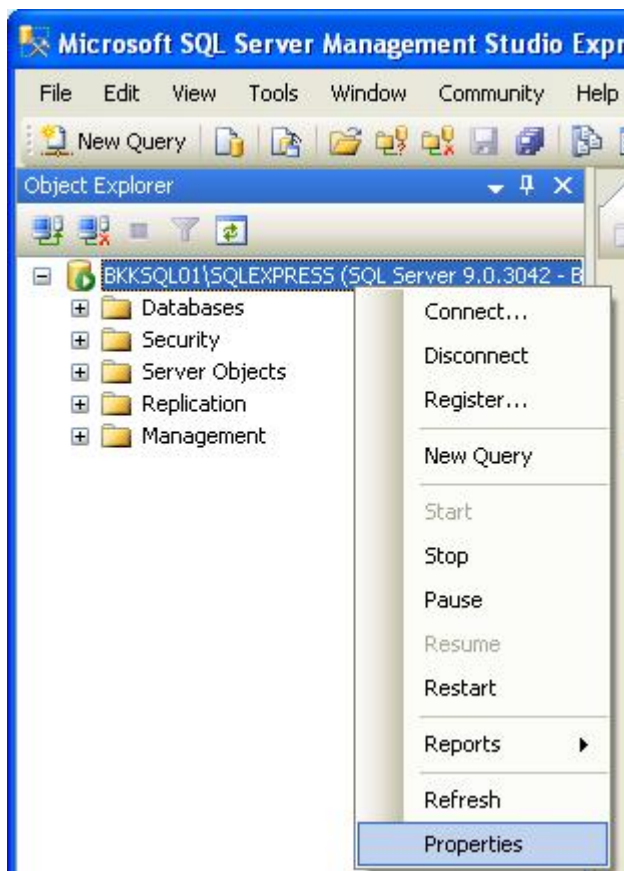
1. Login to SQL Server using SQL Server Management Studio Express on local SQL Server with Windows Authentication user. This will use Windows account to authenticate to SQL Server.

Figure 1 **Connect to Server**



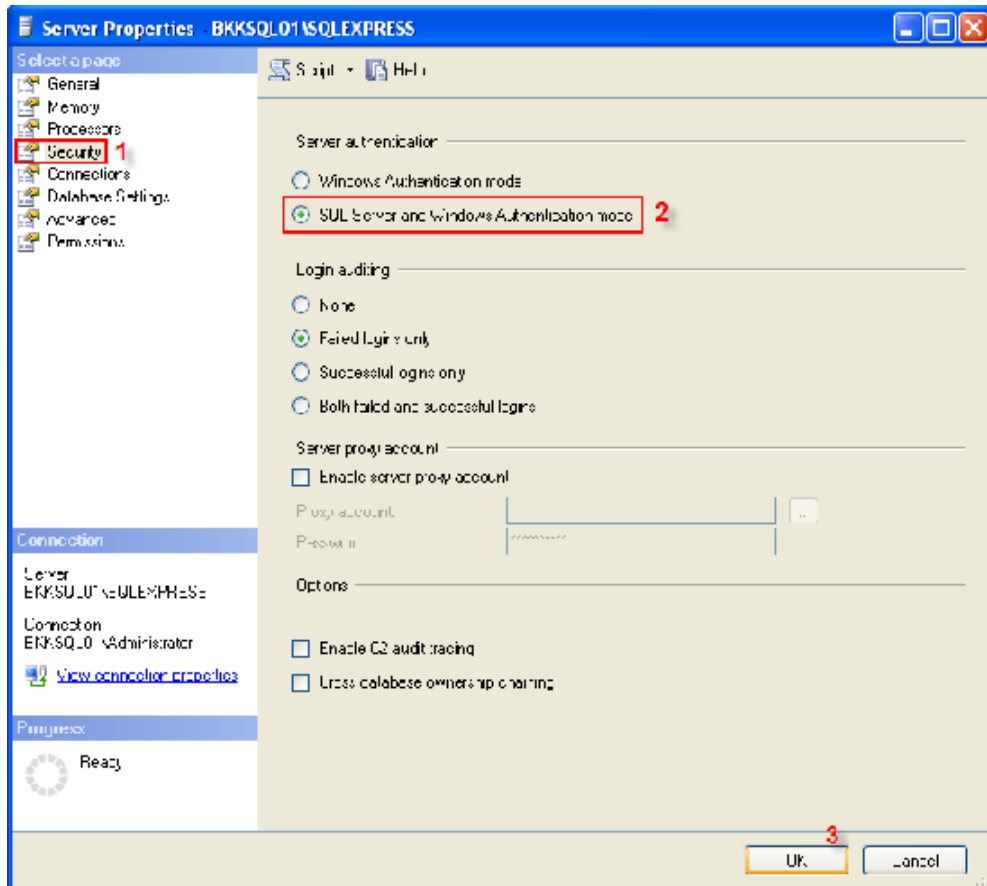
2. In **Object Explorer**, right click on the instance name and select **Properties**.

Figure 2 Object Explorer



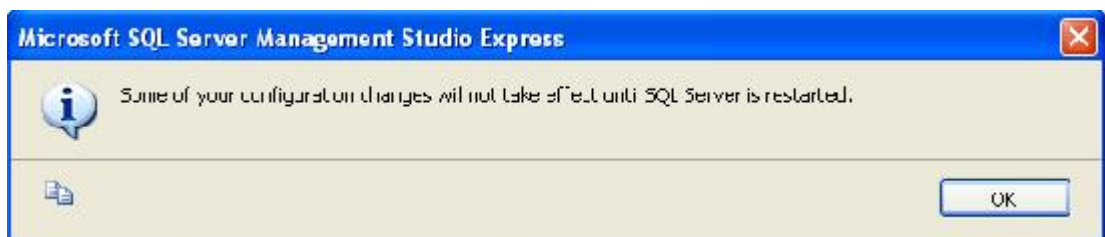
3. On the left, select **Security** and change **Server authentication** to **SQL Server** and **Windows Authentication** mode. If the choice is already selected, that means you have already allowed SQL Server authentication.

Figure 3 Server Properties



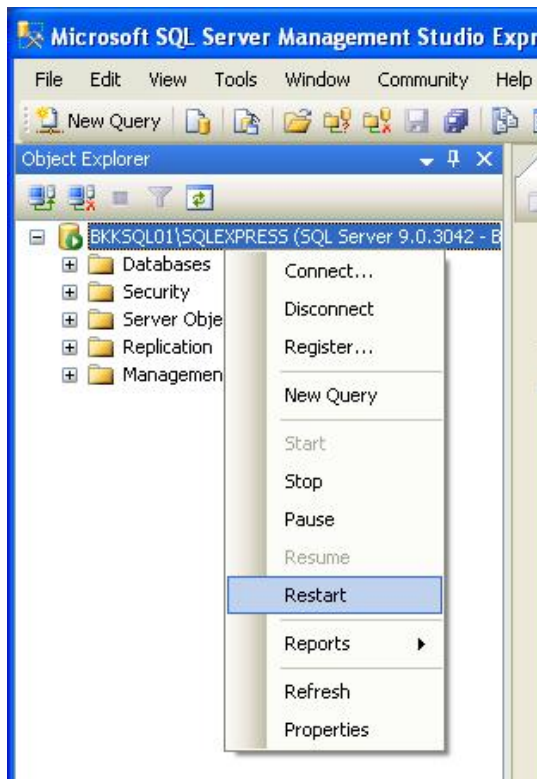
4. A new window displays showing that you need to restart the SQL Server for the changes to take effect.

Figure 4 Information message



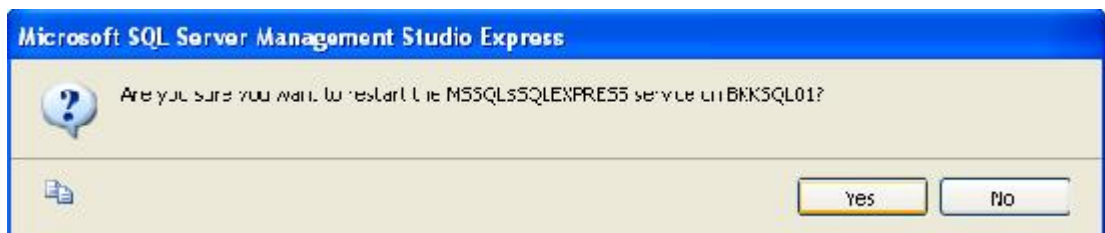
5. Right click on the instance name again and select **Restart** to restart the SQL Server service.

Figure 5 Object Explorer



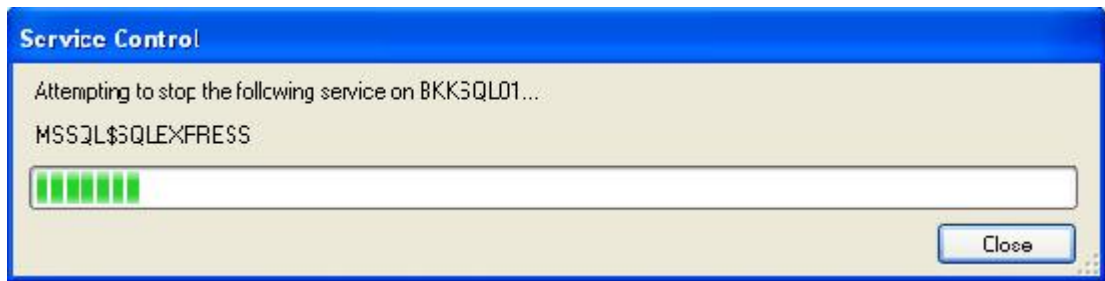
6. Select **Yes**.

Figure 6 Information dialog



7. Wait for service to stop and start.

Figure 7 Attempting to stop service

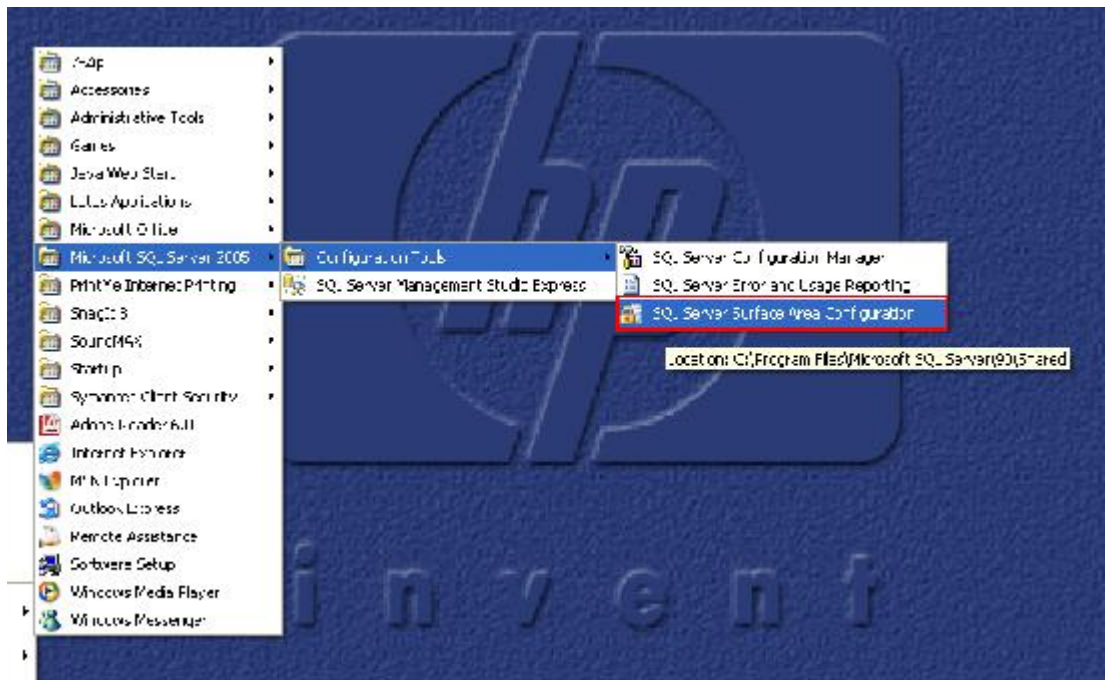


8. Both SQL Server and Windows authentication have been enabled. You can now login to SQL Server with your current Windows account or your created account.

Enabling remote connection on SQL Server Surface Area Configuration.

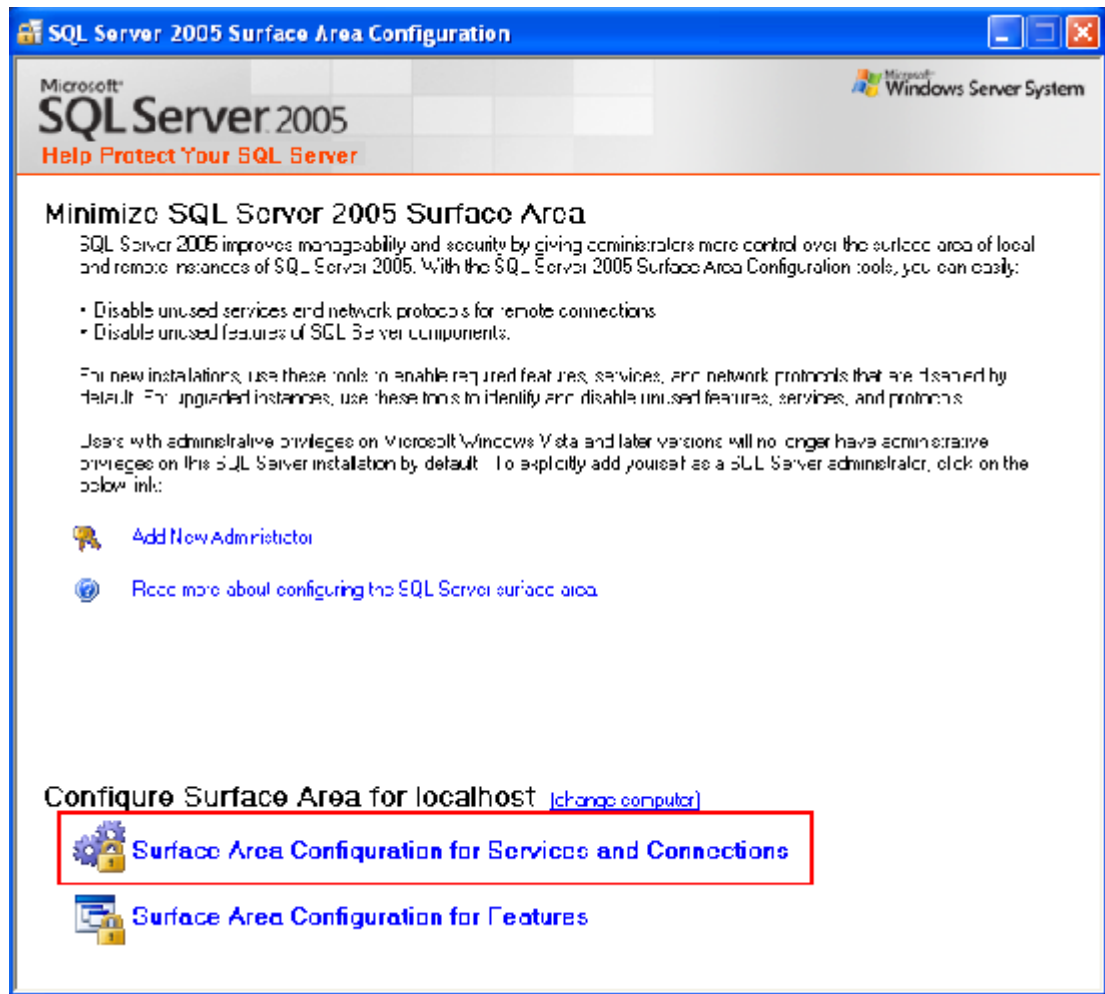
1. Open **SQL Server Surface Area Configuration**.

Figure 8 SQL Server Surface Area Configuration



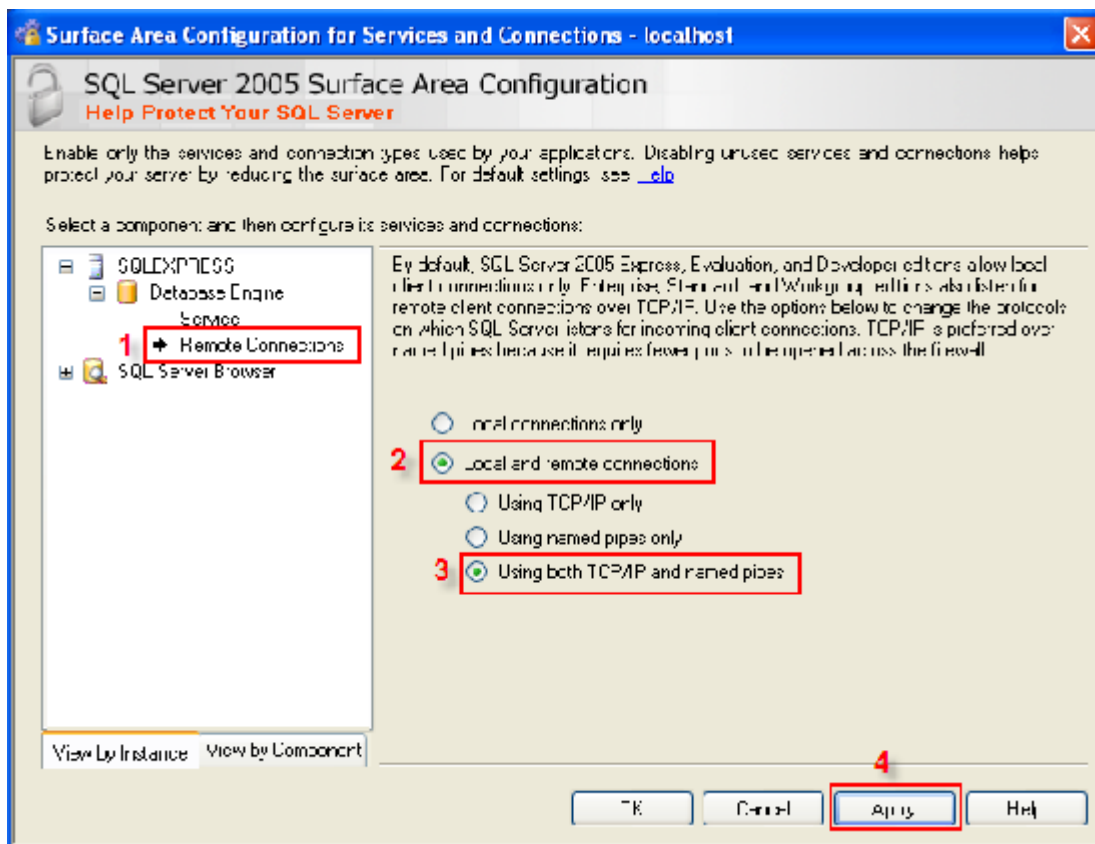
2. Select **Surface Area Configuration for Services and Connections**.

Figure 9 SQL Server 2005 Surface Area Configuration



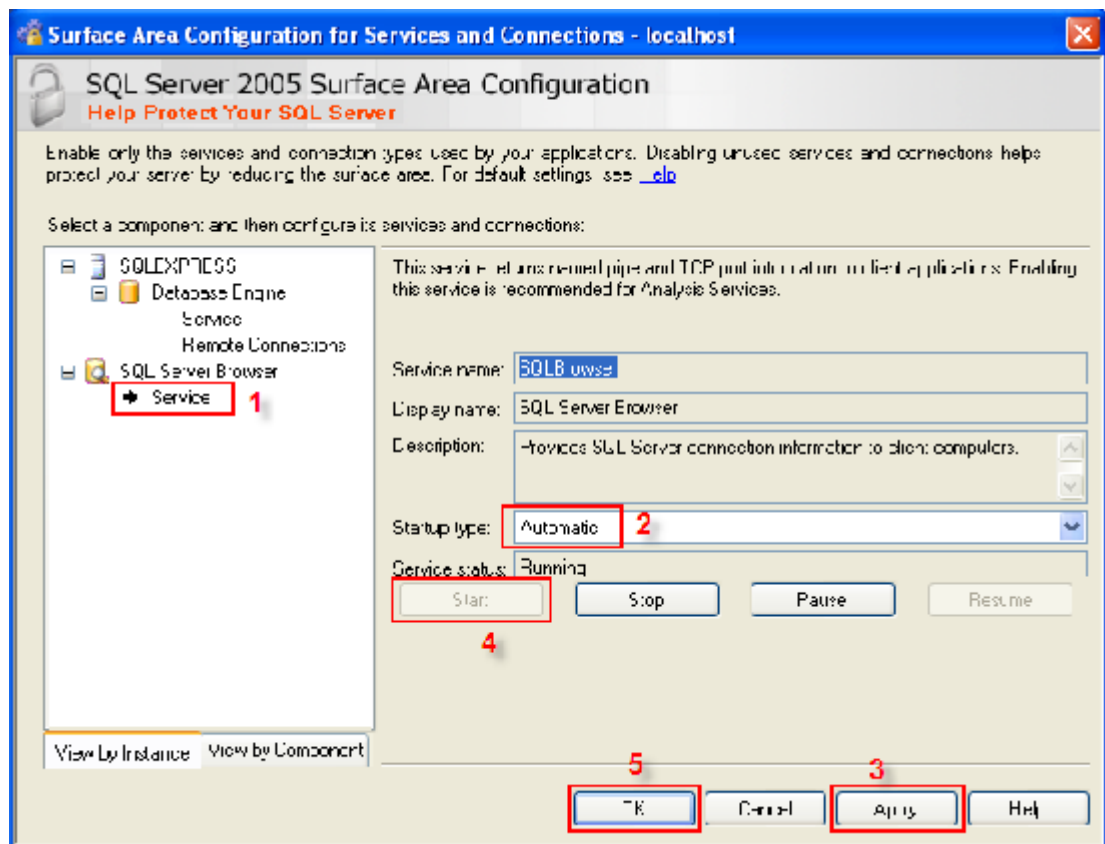
3. On the left side, expand your SQL Server instance by selecting **Database Engine** and then **Remote Connections**. On the right side select **Local and remote connections** and then using **both TCP/IP and named pipes**. Click **Apply**.

Figure 10 SQL Server 2005 Surface Area Configuration step 1



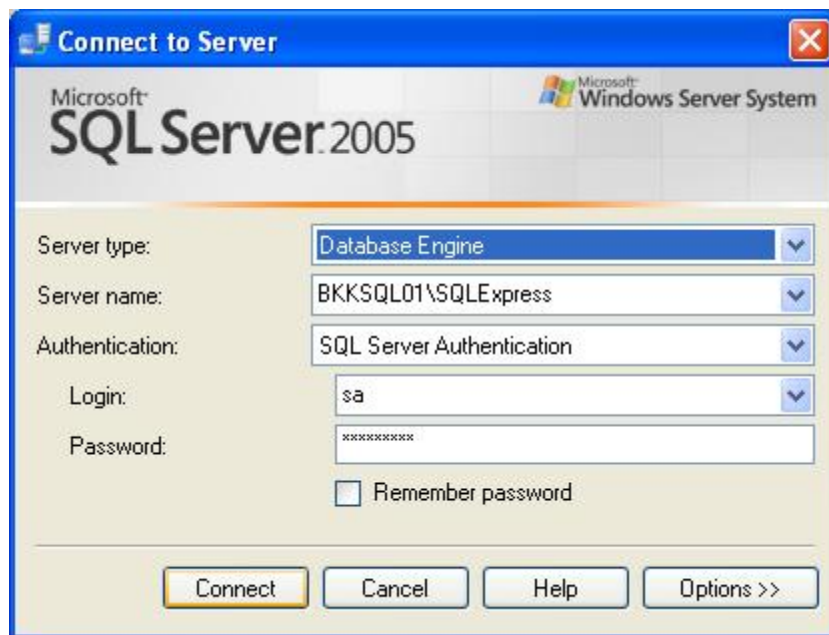
4. On the left side, select **SQL Server Browser** and then select **Service**. On the right side, if the startup type is **Disabled**, you need to change to **Automatic**. Click **Apply** and then click **Start** to start the service then click **OK**.

Figure 11 SQL Server 2005 Surface Area Configuration step 2



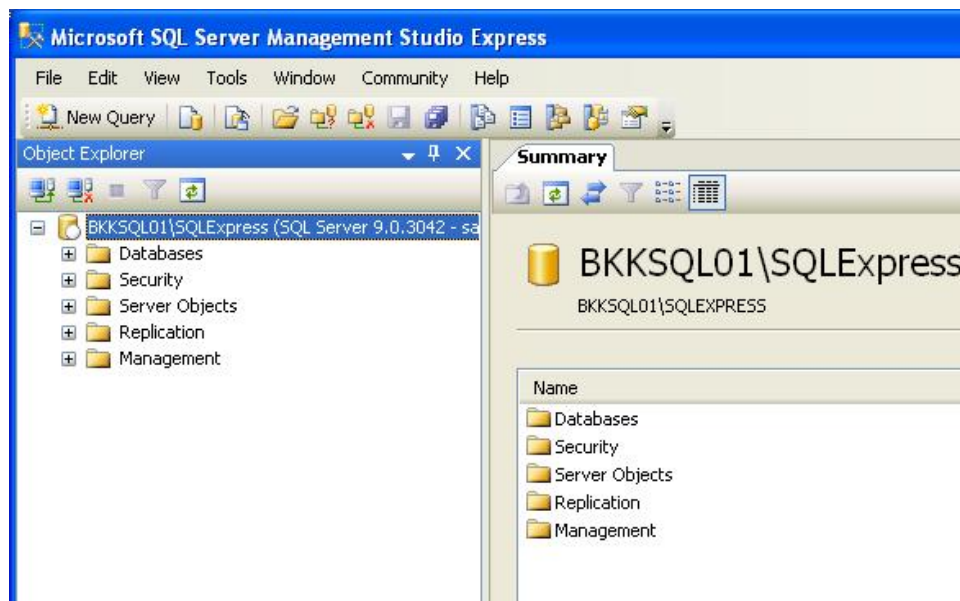
5. The configuration is finished. Login to your SQL Server from a remote computer using SQL Server authentication mode.

Figure 12 **Connect to Server**



6. Login to SQL Server succeeded.

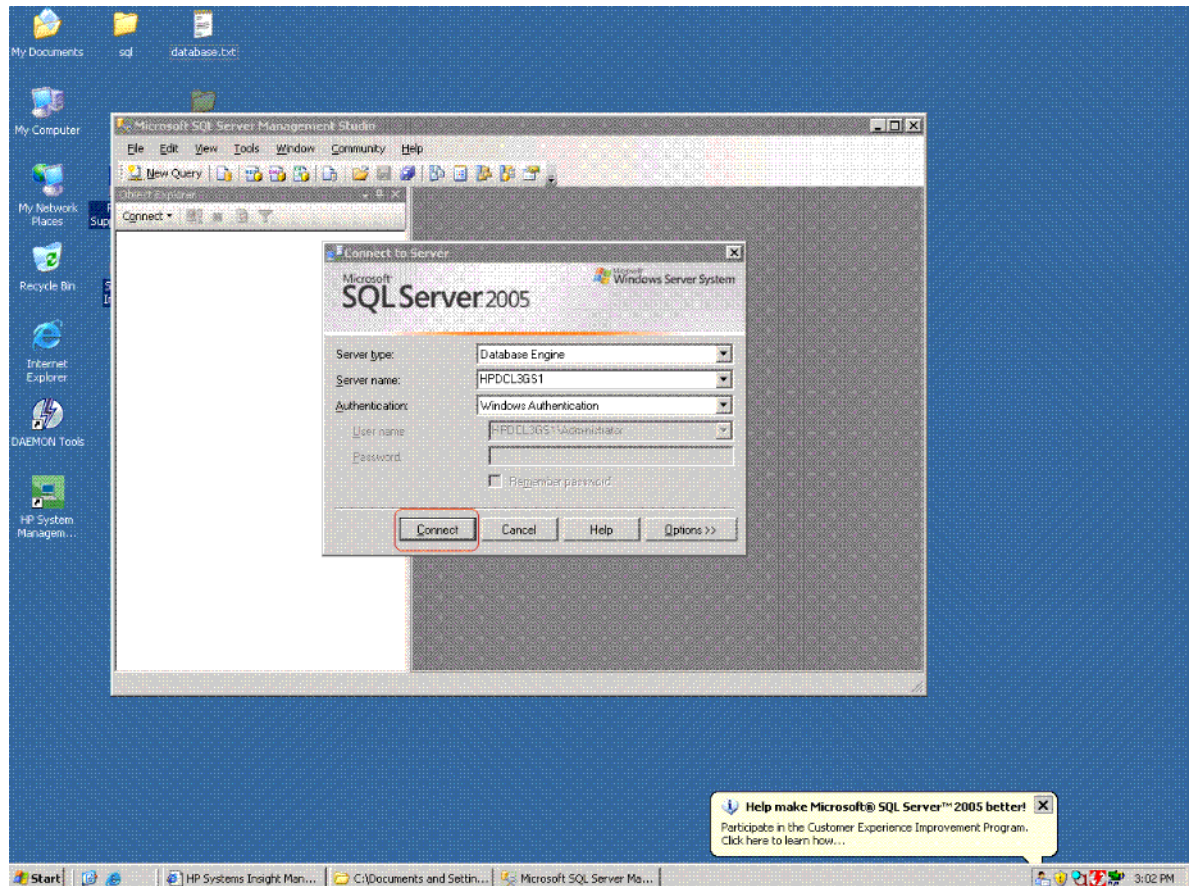
Figure 13 **Microsoft SQL Server Management Studio Express**



Moving HP SIM SQL Server 2005 SP2 database from a local to a remote machine

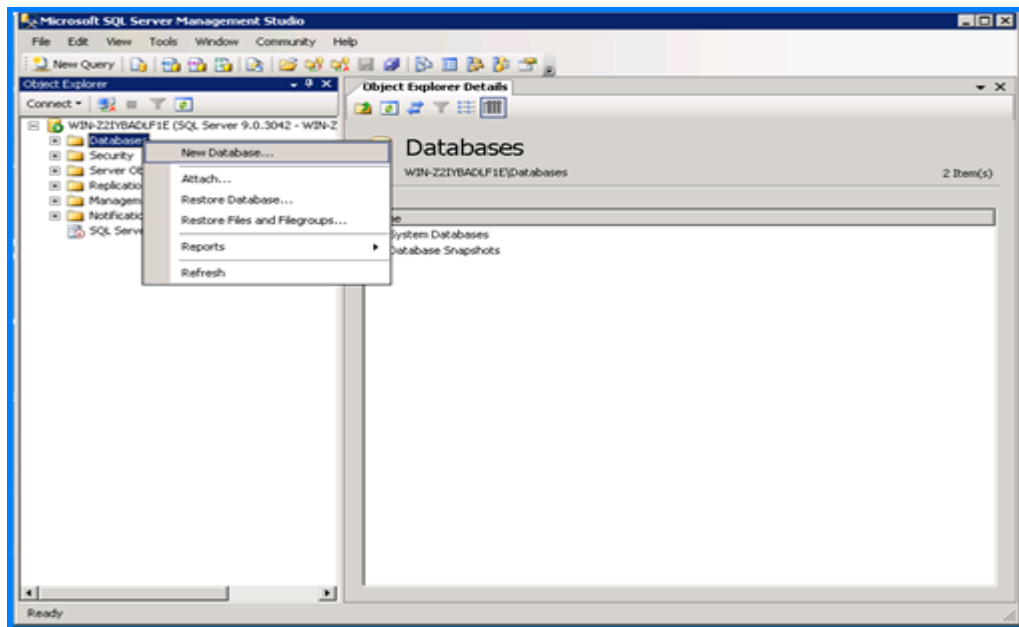
1. Stop and disable the HP SIM service running on Machine 1.
2. Open SQL Server Management Studio in Machine 1
(Programs → Microsoft SQL server 2005 → SQL Server Management Studio)

Figure 14. Connecting to SQL Server



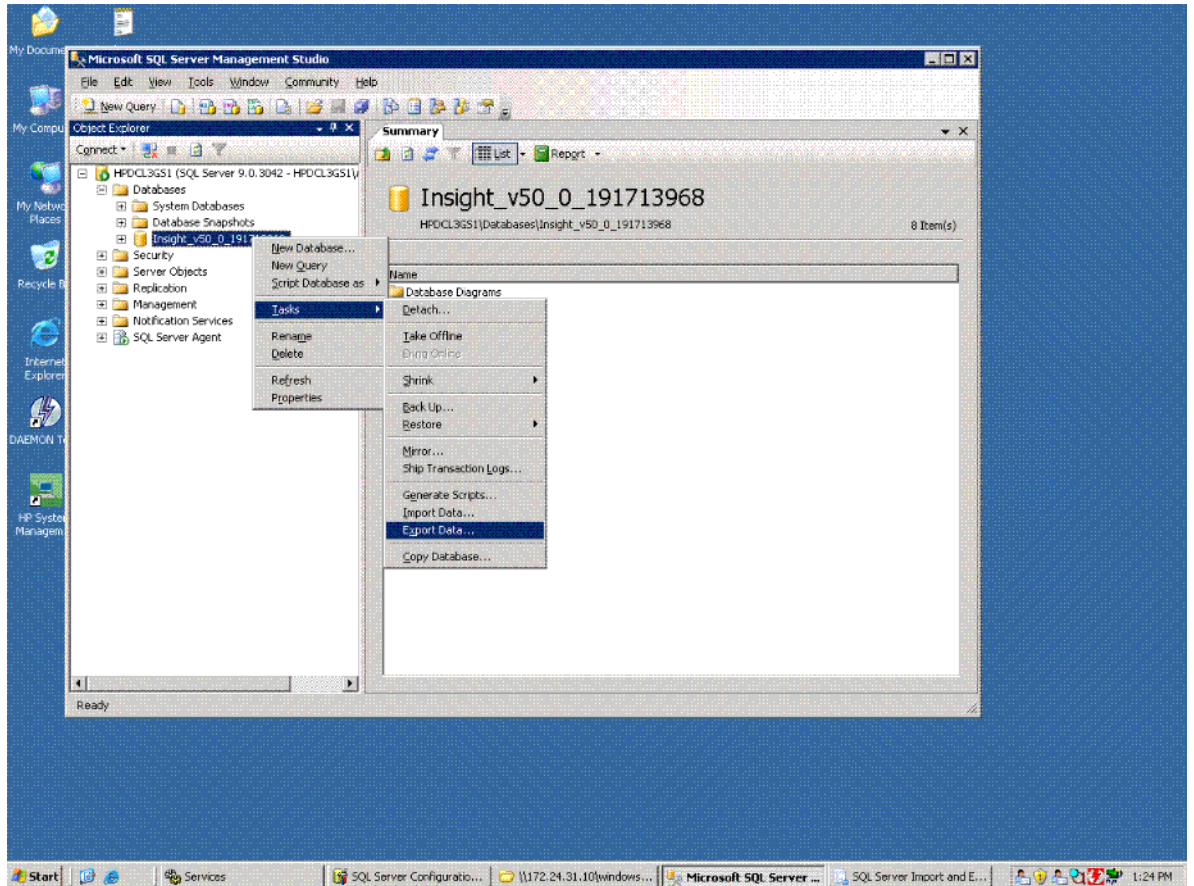
3. With default settings in the Connect to Server window, click "**Connect**".
4. Write down the database name. For example, **Insight_v50_xxxxxxxxxx**.
5. Create a new SQL server 2005 Database on the target machine (Machine 2).
 - a) Open SQL Server Management Studio in Machine 2.
(Programs → Microsoft SQL server 2005 → SQL Server Management Studio)
 - b) Right click **Database** and select **New Database**.

Figure 15. Creating a database



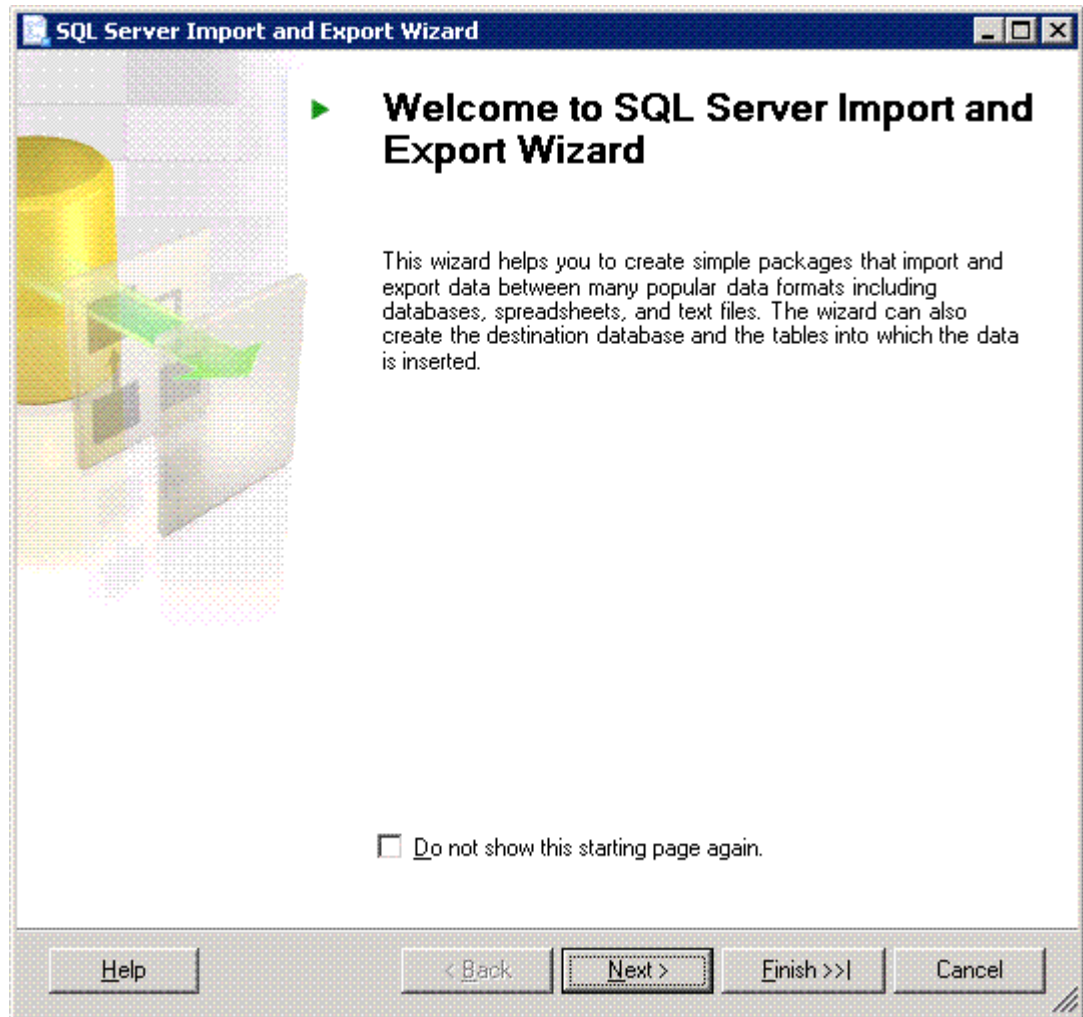
- c) Enter the name of the database you wrote down in step 4, and then click **OK** with default settings selected.
6. In Machine 1, right-click the name of the Insight database. For example, **Insight_v50_XXXXXXXX**.
7. Select **Tasks**→**Export data**.

Figure 16. Export Data



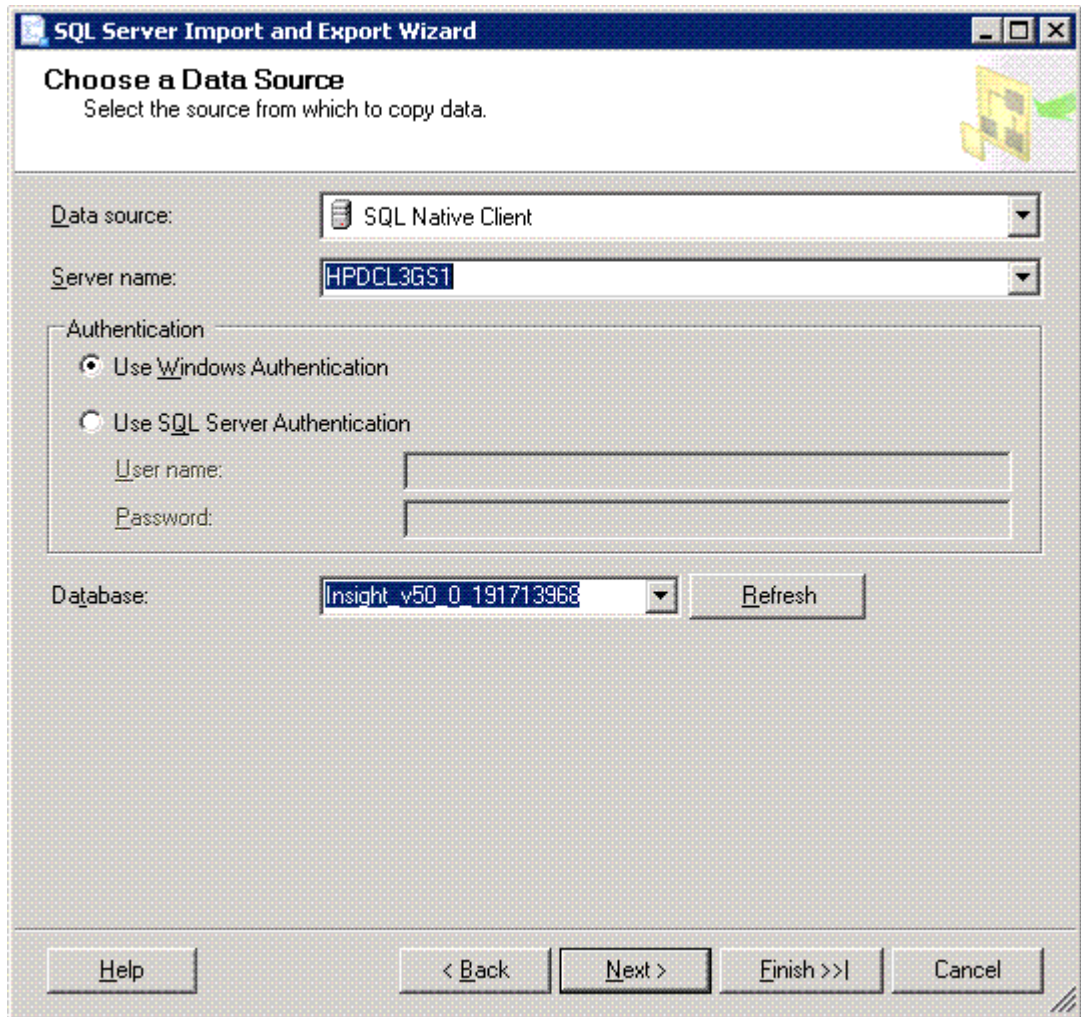
8. In the **Welcome to SQL Server Import and Export Wizard** window, click **Next**.

Figure 17. Import and Export Wizard



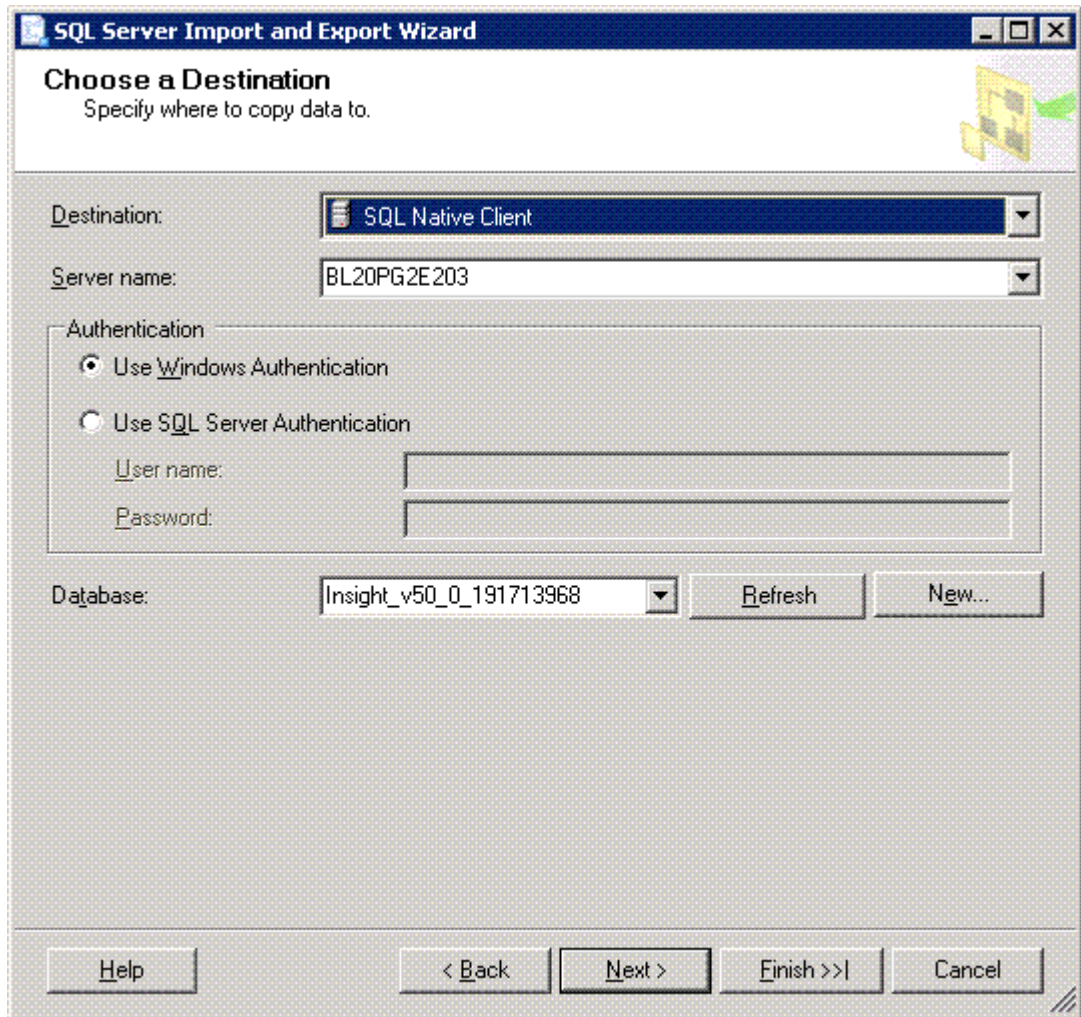
9. In the **Choose a Data Source** window, use the default settings **Windows Authentication** or choose the authentication method you used for your database, and then click **Next**.

Figure 18. Choose a Data Source



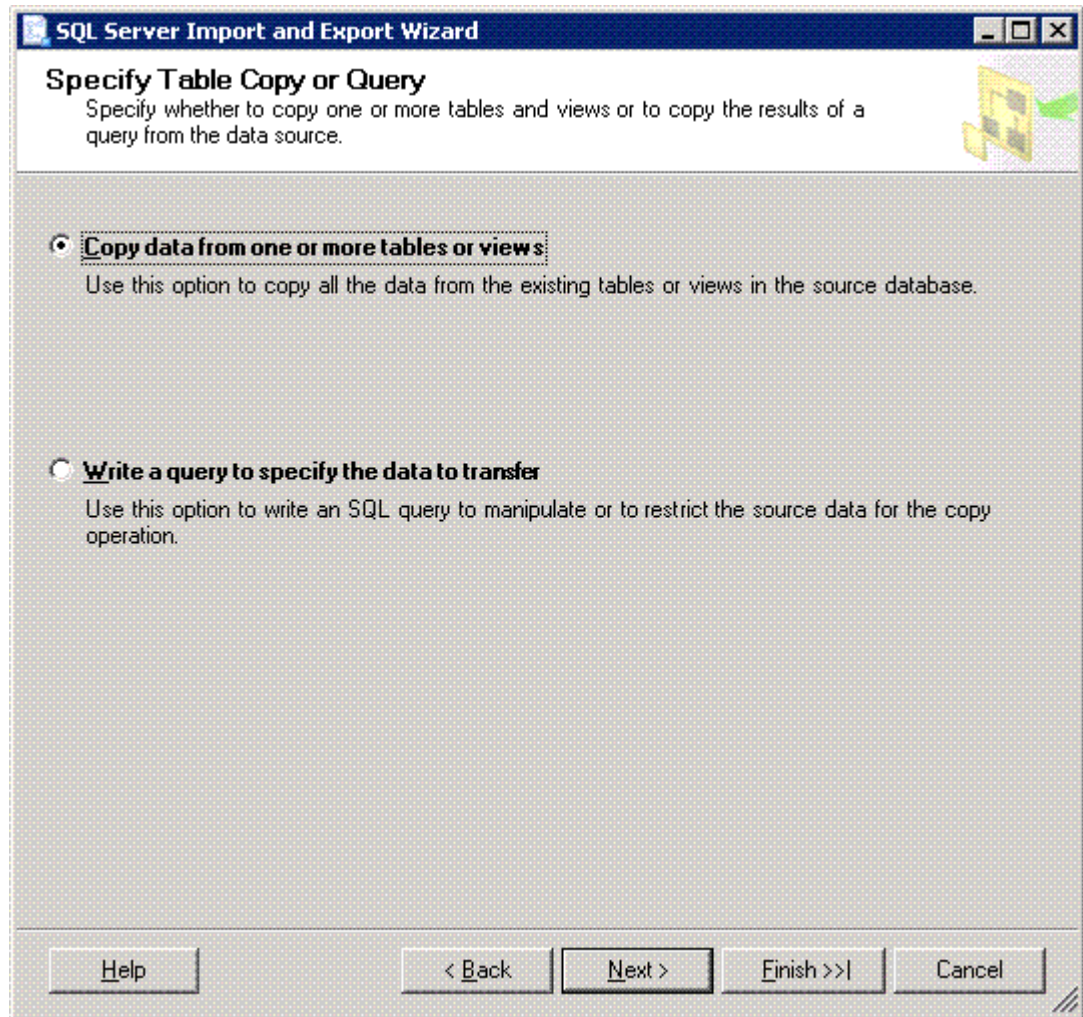
10. In the **Choose a Destination** window, select the Machine 2 database server from the list. Select the database created in Step 5 from the **Database** list at the bottom of the window.

Figure 19. Choose a Destination



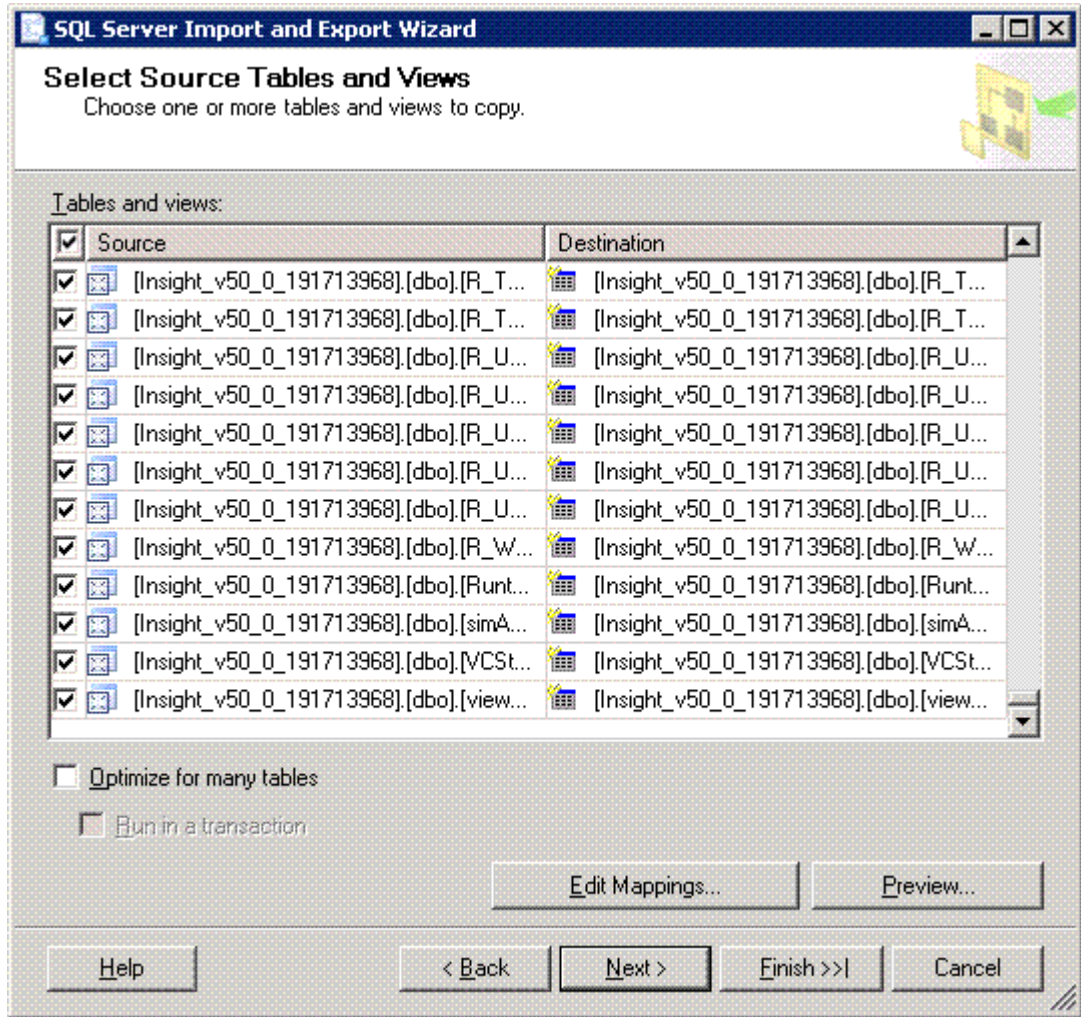
11. In the **Specify Table Copy or Query** dialog window, select the **Copy data from one or more tables or views**, and then click **Next**.

Figure 20. Specify Table Copy or Query



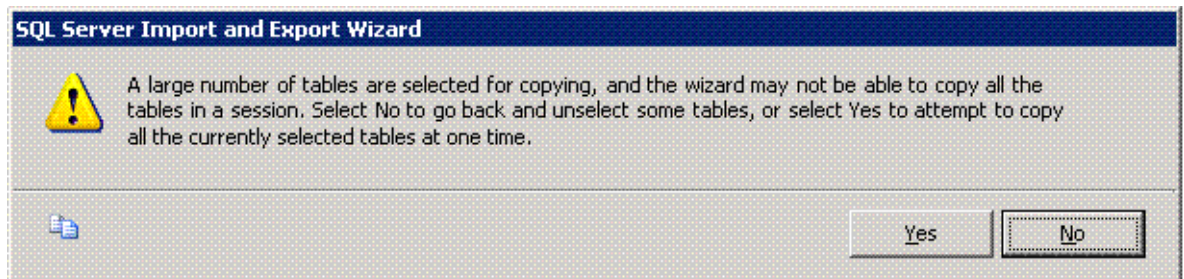
12. In the **Select Source Tables and Views** window, select the **All** box and then click **Next**. A pop-up window appears.

Figure 21. Select Source Tables and Views



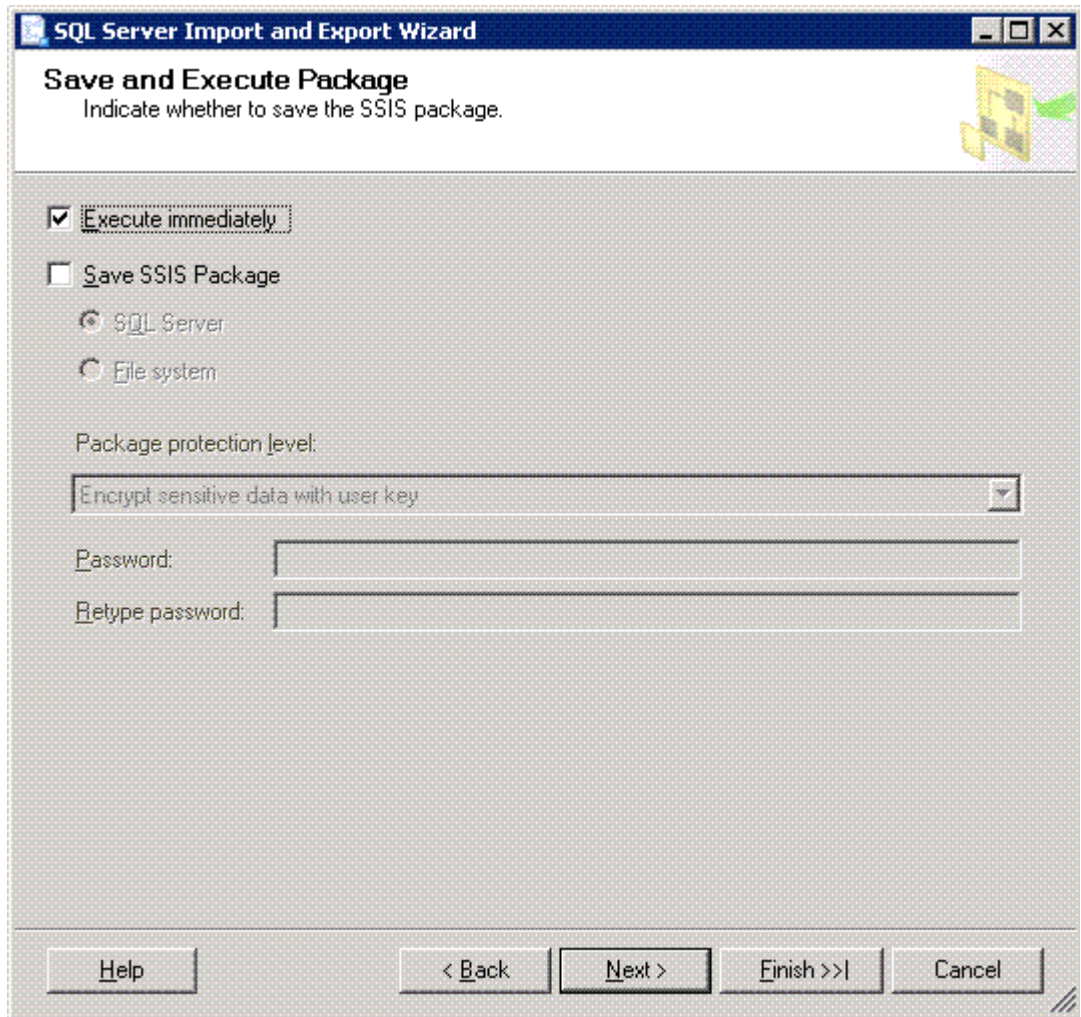
13. Click **Yes**.

Figure 22. Pop-up Window



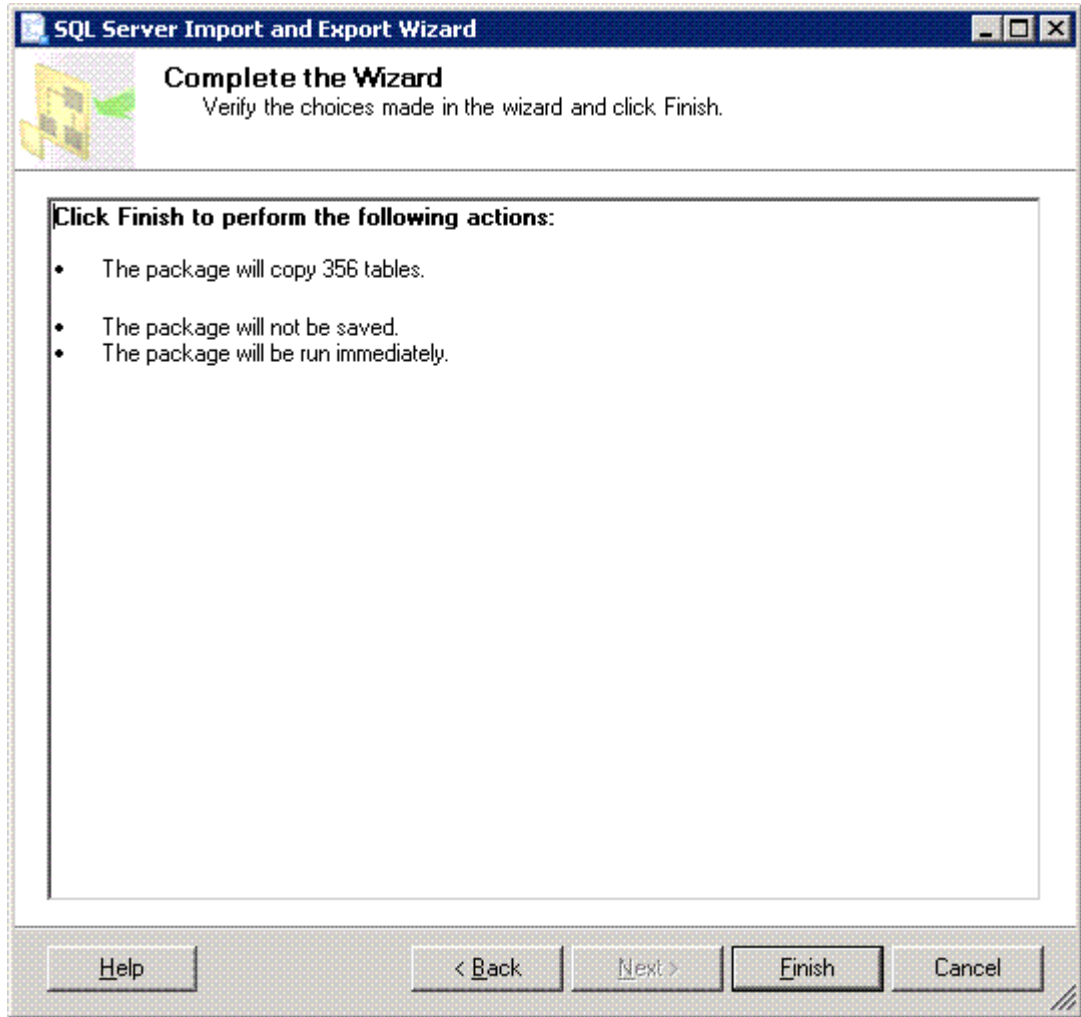
14. In the **Save and Execute Package** window, keep the default setting (**Execute immediately**) and then click **Next**.

Figure 23. Save and Execute Package



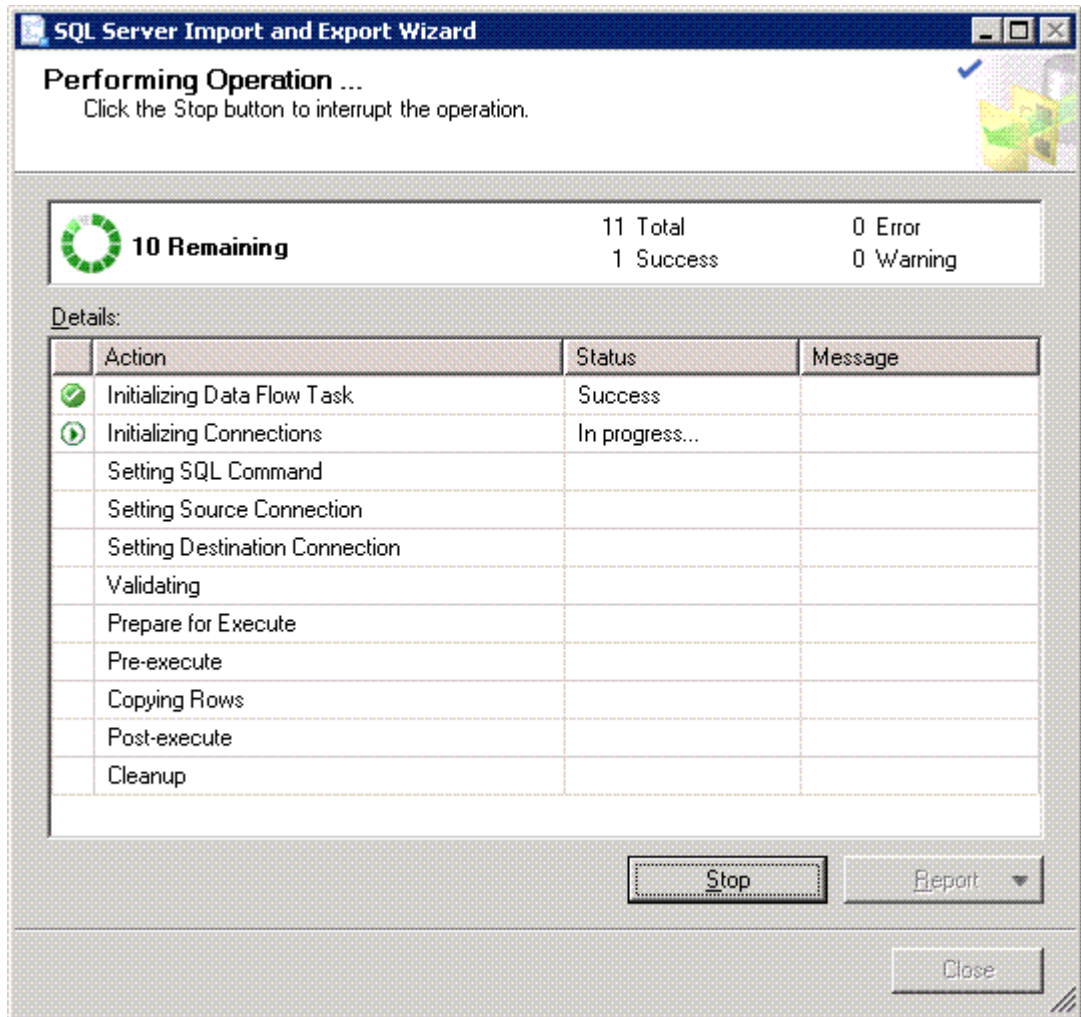
15. In the **Complete the Wizard** window, click **Finish**.

Figure 24. Complete the Wizard



16. Once all tasks have completed successfully, stop and disable the SQL Service.

Figure 25. Performing Operation



17. Data is successfully migrated from Machine 1 to Machine 2.

Figure 26. Source database before migration

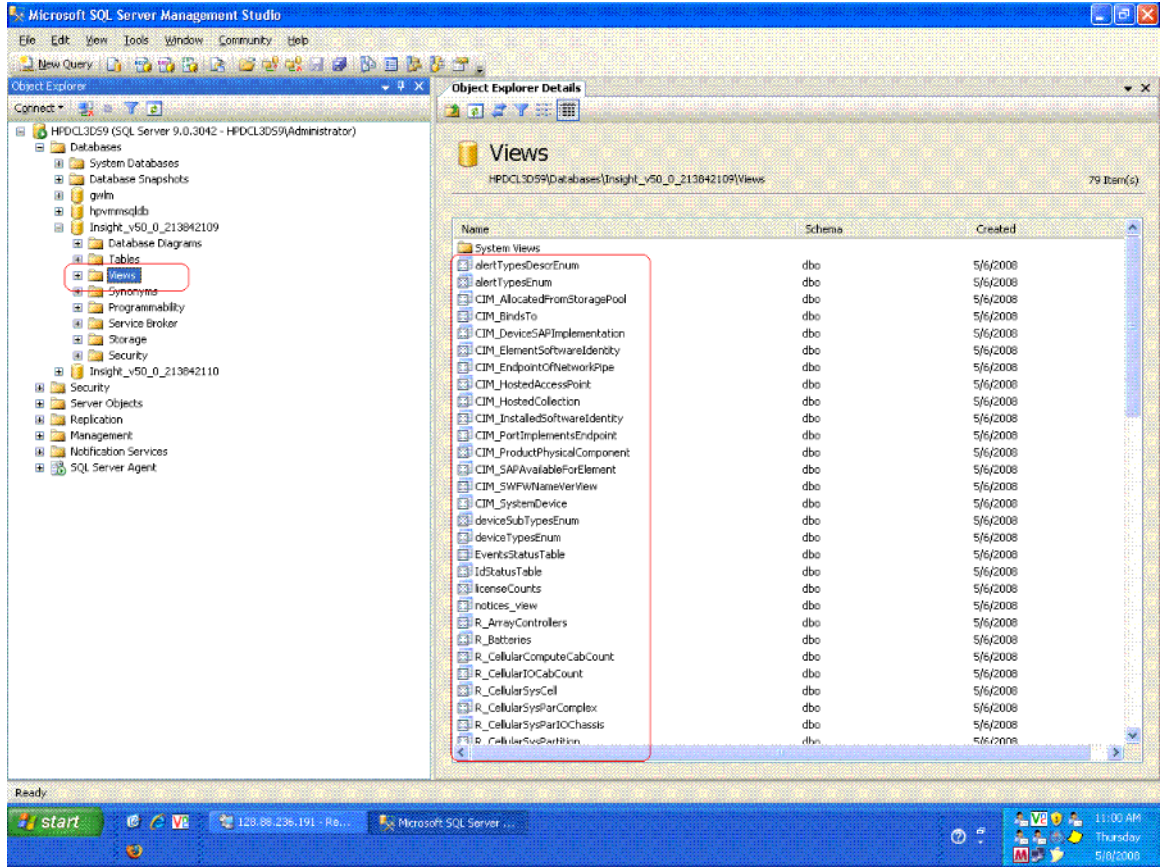
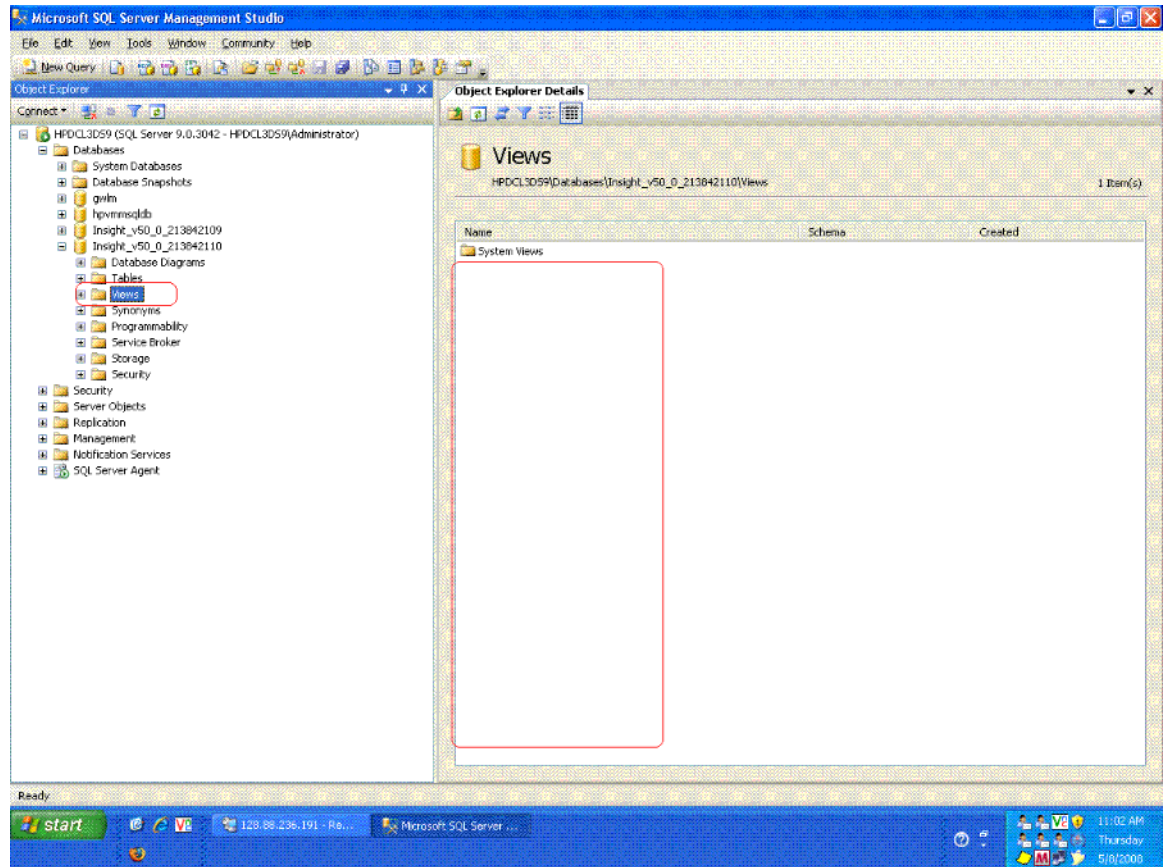


Figure 27. Source database after migration



Machine 1 HP SIM Installation Directory

1. Create a backup of DATABASE.PROPS and DATABASE.ADMIN files located in `<installation directory>\HP\System Insight Manager\config`.
2. Some settings for the new database changes in HP SIM need to be modified in DATABASE.PROPS and DATABASE.ADMIN files. Update these files with the following information and save the files.
 - Change the `hp.Database.hostName` to machine 2
 - Change the `hp.Database.instance name` to machine 2\\Database_server name
 - Change the `hp.Database.username` to machine 2\\username

Start the HP SIM service.

For more information

For more information on HP SIM, visit the HP website (<http://www.hp.com/go/hpsim>).

Call to action

Please send comments about this paper to TechCom@HP.com.

© 2008 Hewlett-Packard Development Company, L.P. The information contained herein is subject to change without notice. The only warranties for HP products and services are set forth in the express warranty statements accompanying such products and services. Nothing herein should be construed as constituting an additional warranty. HP shall not be liable for technical or editorial errors or omissions contained herein.

Microsoft and Windows are U.S. registered trademarks of Microsoft Corporation.

492087-002, January 2009

