

HP StorageWorks File Migration Agent Software

Data sheet



HP StorageWorks File Migration Agent Software (HP FMA) offers a technologically innovative approach to data movement. As a new entry to the HP Information Lifecycle Management (ILM) family of products, HP FMA is designed to help simplify Windows®-based file, web and application server administration in small business to enterprise environments. This is accomplished through automated policy-based file migration and archive to popular storage targets, including HP StorageWorks Reference Information Storage System (RISS), HP StorageWorks File System Extender and NAS via Common Internet File System (CIFS).

HP FMA assists enterprises in aligning their business policy requirements with data retention, and, in effect, managing more data per administrator, by maintaining

active files on high-performance primary storage while archiving inactive files to cost-effective secondary storage. Files may be archived based on common parameters, such as minimum file modification time or minimum file size. HP FMA can help companies develop efficient storage capacity utilization strategies, while satisfying long-term data retention, through support for seamless data movement between disk and tape. As a complementary solution to traditional backup and recovery, HP FMA even helps speed backups because administrators will be backing up less data volume, allowing for faster volume-level restores.

HP archiving solutions help customers to protect their data while allowing them to put their information to work.

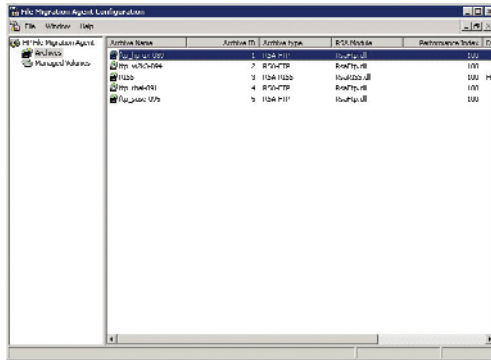
File migration software designed to help simplify Windows-based file, web and/or application server administration by enabling policy-based migration to popular storage targets.

The HP StorageWorks File Migration Agent Software (HP FMA) is a new entry to the HP Information Lifecycle Management (ILM) family of products designed to help simplify Windows-based file, web and application server storage management in both SMB and enterprise environments. HP FMA offers policy-based file migration and archive to popular storage targets, including: HP StorageWorks Reference Information Storage System (RISS), HP StorageWorks File System Extender (FSE) and NAS via CIFS.

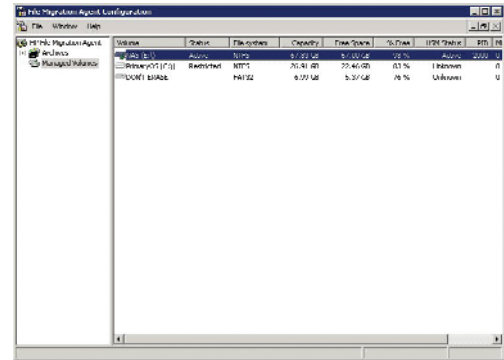
Key features and benefits

- **Simplicity without compromise**—HP StorageWorks File Migration Agent Software helps reduce the cost of storage and storage management by automatically migrating static data to less expensive tiers of storage based on business policies and quality of service requirements.
- **Change without chaos**—The only software solution that will enable file migration from Windows-based environments to HP RISS, HP FSE and NAS via CIFS. Files that are migrated to RISS are content searchable and retention managed.
- **Faster backup and recovery**—Enables the migration of inactive files to cost-effective, secondary storage. A sparse file (stub file) remains as a pointer to migrated data—it is a minute fraction of the size of the original file. Less data volume to manage on primary storage results in faster backup and restores of primary storage.
- **Ease of management**—Eases the backup effort and infrastructure management required to protect large scale file serving, web server and application server environments.
- **Business agility**—Redeploy storage and storage management resources once static files have been migrated off primary systems.
- **Storage consolidation**—Enables consolidation of file servers, web servers and application servers once infrequently used data is migrated to secondary storage.

HP StorageWorks File Migration Agent Software



HP File Migration Agent enables file migration to a variety of target archives



The configuration panel shows what volumes are managed by HP File Migration Agent

Product number/SKU	Product name	Description
T4274A	HP File Migration Agent v2.0 Media Kit	Media Kit
T4275A	HP File Migration Agent LTU HP hardware Windows 1 Server	Base server; migrate to HP hardware; non-cluster
T4276A	HP File Migration Agent LTU HP hardware Windows Cluster	Base server; migrate to HP hardware; cluster
T4277A	HP File Migration Agent LTU non-HP hardware Windows 1 Server	Base server; migrate to non-HP hardware; non-cluster
T4278A	HP File Migration Agent LTU non-HP hardware Windows Cluster	Base server; migrate to non-HP hardware; cluster
T4279A	HP File Migration Agent LTU 100 GB to 1 TB non-HP hardware	Migrate to non-HP hardware; licensed per 100 GB, from 100 GB up to 1 TB
T4280A	HP File Migration Agent LTU 1 TB to 20 TB non-HP hardware	Migrate to non-HP hardware; licensed per TB, from 1 TB up to 20 TB
T4281A	HP File Migration Agent LTU 20 TB+ non-HP hardware	Migrate to non-HP hardware; licensed per TB, greater than 20 TB

Accessories

- HP File Migration Agent v2.0 Media Kit, T4274A
- HP File Migration Agent LTU HP hardware Window 1 Server, T4275A
- HP File Migration Agent LTU HP hardware Window Cluster, T4276A
- HP File Migration Agent LTU non-HP hardware Window 1 Server, T4277A
- HP File Migration Agent LTU non-HP hardware Window Cluster, T4278A
- HP File Migration Agent LTU 100 GB – 1 TB non-HP hardware, T4279A
- HP File Migration Agent LTU 1 TB – 20 TB non-HP hardware, T4280A
- HP File Migration Agent LTU 20 TB+ non-HP hardware, T4281A

HP StorageWorks File Migration Agent Software

Warranty and services

HP warrants only that the Software media will be free of physical defects for a period of ninety (90) days from delivery. Includes one year of HP Software Support 24x7 (software technical support and software product and documentation updates).

For more information about HP's Global Limited Warranty and Technical Support, visit [ftp://ftp.compaq.com/pub/products/storageworks/warranty/EN_321708-008.pdf](http://ftp.compaq.com/pub/products/storageworks/warranty/EN_321708-008.pdf)

HP Care Pack Services

HP Care Pack Services offer upgraded service levels to extend and expand your standard product warranty with easy to buy, easy to use support packages that help you make the most of your hardware and software investments. They let you choose the support levels that meet your business requirements, from basic to mission-critical. They help you contain total cost of ownership. HP Care Pack warranty extensions can be purchased along with HP products to cost-effectively upgrade or extend your warranty. For many products, post-warranty HP Care Pack Services are available when your original warranty has expired. *HP Care Pack availability may vary by country and product.*

Why purchase an HP Care Pack service?

Your standard warranty protects against product defects. HP Care Pack Services help you guard against unplanned downtime, which can reduce your productivity and profitability. These convenient service packages:

- Protect your investment in HP products
- Provide consistent, predictable levels of support across your entire department or business
- Ease budget planning with fixed-cost support that includes parts and labor
- Give you direct access to proven technical and problem-solving expertise
- Offer a choice of response-time and repair-time commitments
- Deliver prompt, measurable results
- Are available whenever and wherever you do business

HP Care Pack availability may vary by country and product.

For additional information on Product Services and HP Care Pack, as well as orderable part numbers, please visit: www.hp.com/hps/carepack.

If you have specific questions about availability or how to obtain services contact your local HP representative. Contact information for your local area can be found at: www.hp.com/services

eSupport

HP eSupport is a portfolio of technology-based services that assist you with managing your business environment—from the desktop to the datacenter. *Support portal:* The HP support portal provides one-stop access to the information, tools and services you need to manage the daily operations of your IT environment. Features include: Access to self-solve tools (including search technical knowledge base); efficient logging and tracking of support cases; collaboration with other business and IT professionals; download of patches and drivers; access to diagnostic tools; and proactive notification of relevant information. Access to certain features of the support portal requires an HP service agreement. To access the support portal, visit www.hp.com/support

HP Instant Support Enterprise Edition (ISEE) provides a single remote monitoring and support solution for your IT data center. ISEE uses continuous hardware event monitoring and automated notification to identify and prevent potential critical problems. ISEE is a feature of HP Hardware Support Onsite Service with Next-Day response or better, Proactive Essentials, Proactive 24, Critical Service and warranty support for the selected products. For more information or to download ISEE, visit www.hp.com/go/instant-support

HP education services

For more information about HP Education Services for Storage and SAN, visit <http://education.hp.com/curr-storsan.htm>

Additional services information

For more information about Deployment, Per Event, Consulting and Education services for HP Storage, visit www.hp.com/hps/storage/
For more information about HP Care Pack Services for Storage, visit www.hp.com/hps/carepack/storage/cp_networked.html
For more information about HP Storage Software, services and updates, visit <http://h18006.www1.hp.com/storage/software.html>
If you have specific questions, contact your local HP representative. Contact information for a representative in your area can be found at "Contact HP" on www.hp.com

Financial Services

HP Financial Services provides innovative financing and financial asset management programs to help you cost-effectively acquire, manage, and ultimately retire your HP solutions. For more information on these services, please contact your HP sales representative or find us on the web at: www.hp.com/go/hpfinancialservices

HP Customer Support

HP Customer Support provides a broad spectrum of services to commercial and enterprise customers, including performance and availability services such as proactive mission-critical services and support management services for deployment of the entire IT infrastructure, including HP and multivendor environments. For more information on these services, contact your HP sales representative or visit www.hp.com/hps/support

For more information

For more information on the HP StorageWorks File Migration Agent Software, visit <http://h18006.www1.hp.com/products/storage/software/fma/index.html>

© 2005 Hewlett-Packard Development Company, L.P. The information contained herein is subject to change without notice. The only warranties for HP products and services are set forth in the express warranty statements accompanying such products and services. Nothing herein should be construed as constituting an additional warranty. HP shall not be liable for technical or editorial errors or omissions contained herein. Windows is a registered trademark of Microsoft Corporation in the U.S. and/or other countries.

For more information visit

<http://h18006.www1.hp.com/products/storage/software/fma/index.html>

4AA0-1719ENW, September 2005

