

change



## HP StorageWorks MSL6000 Tape Libraries

A complete backup and restore solution for  
mid-range and departmental environments

Solutions for the adaptive enterprise.



In an ideal world, data storage would have high capacity, bulletproof reliability and an easy-to-use graphical user interface. HP makes this vision a reality. The award-winning portfolio of HP StorageWorks MSL6000 Tape Libraries offer a complete backup and restore solution for mid-range and departmental environments.





## Building a better backup

HP StorageWorks MSL6000 Tape Libraries provide performance, investment protection and unparalleled flexibility. By providing centralized backup to a single automated device, MSL6000 Tape Libraries free up valuable IT resources for more strategic work. Ideal for medium to large IT networks—with or without a storage area network (SAN)—experiencing uncertain data growth, MSL6000 Tape Libraries provide change without chaos, simplicity without compromise and growth without limits to meet the most demanding IT network requirements.

## Change without chaos

MSL6000 Tape Libraries offer maximum flexibility with best-in-class drive technology, including the new HP LTO Ultrium 960 tape drive, as well as Ultrium 460 and SDLT 600 tape drives. These technologies are available for both new library purchases as well as upgrades to currently installed MSL5000 and MSL6000 Tape Libraries.





## Simplicity without compromise

MSL6000 Tape Libraries are easily managed through an intuitive GUI control panel and integrated remote web management allowing simple management capabilities from any remote or on-site location. In addition, each library is available with a world-class diagnostic tool, HP Library and Tape Tools, at no additional charge.

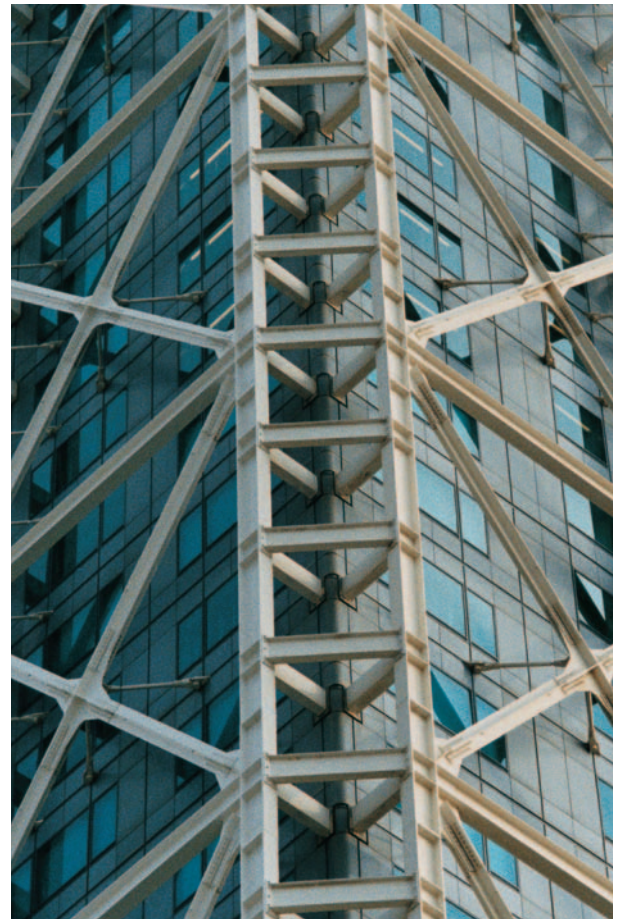
With HP StorageWorks Enterprise Backup Solution (EBS) 1-2-3 Certification, businesses can be assured that MSL6000 Tape Libraries are fully tested, certified and supported in a wide variety of configurations. Through EBS 1-2-3, HP can simplify SAN configurations for backup by providing business and technical blueprints and a design guide for quick and easy configuration.

For information on HP EBS solutions, go to [www.hp.com/go/ebs](http://www.hp.com/go/ebs).



## Growth without limits

HP StorageWorks MSL6000 Tape Libraries provide maximum investment protection through scalability. To move from a direct attach to network attached storage configuration, a simple installation of a Fibre Channel interface card makes the conversion a snap. In addition, the MSL6000 Tape Libraries can scale to larger configurations by enabling a single library to grow and change with capacity and technology as needs require. Not only will the MSL6000 Tape Libraries scale within the family, but they can also be scaled with legacy MSL5000 Tape Libraries using a pass-through mechanism for up to 16 drives and 240 slots.



## Key features and benefits

- *Scalable:* Multi-unit stacking allows the libraries to grow using any combination of contiguous 5U and 10U MSL6000 libraries for up to 240 slots and 16 drives in 40U rack space. MSL6000 libraries are available in rack-mount configuration, but can be converted to tabletop with a conversion kit.
- *Flexible:* Utilizing cPCI slots, MSL6000 libraries can be configured to either Fibre Channel (1 Gb or 2 Gb – user selectable) or Ultra3 LVD SCSI.
- *Easy to use:* The libraries offer one (MSL6026/MSL6030) or two (MSL6052/MSL6060) configurable mail slots for quick load/unload and removal of magazines.
- *Manageable:* The user-friendly touch screen GUI control panel and web-based remote management system make library management easy.
- *Compact:* MSL6000 libraries come in 5U and 10U form factors, both offering the highest storage density in their class.
- *High performance:* Utilizing Ultrium 960 drives, the MSL6060 library provides up to 60 data slots for a native capacity of 24 TB, and the MSL6030 library provides up to 30 data slots for a native capacity of 12 TB.

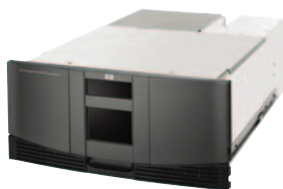
- *Easy off-site backup:* Removable 15-slot magazines (two in each MSL6026/MSL6030 and four in each MSL6052/MSL6060) provide easy off-site backup storage.
- *Reliable:* Using LTO Ultrium or SDLT tape drives, and proven library robotics, MSL6000 Tape Libraries provide the necessary high reliability for today's demanding environments. Each MSL6052/MSL6060 library supports up to four Ultrium or SDLT tape drives, and each MSL6026/MSL6030 library supports up to two Ultrium or SDLT tape drives.
- *Compatible:* MSL6000 Tape Libraries are qualified on a broad range of operating systems, ISV packages and hardware platforms to provide best-in-class interoperability.

## For more information

For more information, visit: [www.hp.com/go/tape](http://www.hp.com/go/tape).



**HP StorageWorks MSL6000**  
Tape Libraries—5U form factor



<b>Drive type</b>	HP StorageWorks MSL6030 LTO Ultrium 960	HP StorageWorks MSL6030 LTO Ultrium 460	HP StorageWorks MSL6026 SDLT 600
<b>Unit dimensions (HxWxD)</b>	8.75x17x30 in/ 22.2x43.2x76.2 cm	8.75x17x30 in/ 22.2x43.2x76.2 cm	8.75x17x30 in/ 22.2x43.2x76.2 cm
<b>Shipping dimensions (HxWxD)</b>	15.25x23x38.25 in/ 38.7x58.4x97.2 cm	15.25x23x38.25 in/ 38.7x58.4x97.2 cm	15.25x23x38.25 in/ 38.7x58.4x97.2 cm
<b>Unit weight</b>	43 lbs/19.5 kg	43 lbs/19.5 kg	43 lbs/19.5 kg
<b>Shipping weight</b>	75 lbs/34 kg	75 lbs/34 kg	75 lbs/34 kg
<b>Native drive throughput (MB/s)</b>	80	30	36
<b>Recording method</b>	Linear Serpentine	Linear Serpentine	Linear Serpentine
<b>Maximum number of drives supported in a single unit</b>	2	2	2
<b>Single unit maximum native backup performance (GB/hr)</b>	576	216	259.2
<b>Single unit number of slots</b>	30	30	26
<b>Single unit native backup capacity (TB)</b>	12	6	9
<b>Robotics reliability (mean swap between failure (MSBF))</b>	2 million	2 million	2 million
<b>Multi-unit scalability</b>	Yes, up to 8 units	Yes, up to 8 units	Yes, up to 8 units
<b>Maximum native scaled capacity (TB)</b>	96	48	72
<b>Maximum native scaled performance (GB/hr)</b>	4,608	1,728	2,073
<b>Interface</b>	Ultra3 SCSI (LVD)	Ultra3 SCSI (LVD)	Ultra3 SCSI (LVD)
<b>Control panel</b>	GUI touch screen	GUI touch screen	GUI touch screen
<b>Power requirements</b>	90–132 VAC @ 47–63 Hz, 180–264 VAC @ 47–63 Hz	90–132 VAC @ 47–63 Hz, 180–264 VAC @ 47–63 Hz	90–132 VAC @ 47–63 Hz, 180–264 VAC @ 47–63 Hz
<b>Power consumption (typical/max)</b>	180 W/200 W	180 W/200 W	180 W/200 W
<b>Warranty</b>	One-year, next-business-day, on-site	One-year, next-business-day, on-site	One-year, next-business-day, on-site
<b>Mission Critical Support services</b>	Optional	Optional	Optional
<b>Servers supported*</b>	HP ProLiant servers, HP-UX servers, HP AlphaServer systems	HP ProLiant servers, HP-UX servers, HP AlphaServer systems	HP ProLiant servers, HP-UX servers, HP AlphaServer systems

\* For specific servers supported by individual libraries, refer to product Quick Specs at [www.hp.com/go/tape](http://www.hp.com/go/tape). For complete software, servers, HBA and OS compatibility information, go to EBS at [www.hp.com/go/ebs](http://www.hp.com/go/ebs).

**HP StorageWorks MSL6000**  
Tape Libraries— 10U form factor



<b>Drive type</b>	HP StorageWorks MSL6060 LTO Ultrium 960	HP StorageWorks MSL6060 LTO Ultrium 460	HP StorageWorks MSL6052 SDLT 600
<b>Unit dimensions (HxWxD)</b>	17.5x17x30 in/ 44.5x43.2x76.2 cm	17.5x17x30 in/ 44.5x43.2x76.2 cm	17.5x17x30 in/ 44.5x43.2x76.2 cm
<b>Shipping dimensions (HxWxD)</b>	33x47x31 in/ 83.8x119.4x78.7 cm	33x47x31 in/ 83.8x119.4x78.7 cm	33x47x31 in/ 83.8x119.4x78.7 cm
<b>Unit weight</b>	95 lbs/43.1 kg	95 lbs/43.1 kg	95 lbs/43.1 kg
<b>Shipping weight</b>	147 lbs/66.7 kg	147 lbs/66.7 kg	147 lbs/66.7 kg
<b>Native drive throughput (MB/s)</b>	80	30	36
<b>Recording method</b>	Linear Serpentine	Linear Serpentine	Linear Serpentine
<b>Maximum number of drives supported in a single unit</b>	4	4	4
<b>Single unit maximum native backup performance (GB/hr)</b>	1,152	432	518.4
<b>Single unit number of slots</b>	60	60	52
<b>Single unit native backup capacity (TB)</b>	24	12	15.6
<b>Robotics reliability (mean swap between failure (MSBF))</b>	2 million	2 million	2 million
<b>Multi-unit scalability</b>	Yes, up to 4 units	Yes, up to 4 units	Yes, up to 4 units
<b>Maximum native scaled capacity (TB)</b>	96	48	72
<b>Maximum native scaled performance (GB/hr)</b>	4,608	1,728	2,073
<b>Interface</b>	Ultra3 SCSI (LVD)	Ultra3 SCSI (LVD)	Ultra3 SCSI (LVD)
<b>High availability features</b>	Dual redundant power supply	Dual redundant power supply	Dual redundant power supply
<b>Control panel</b>	GUI touch screen	GUI touch screen	GUI touch screen
<b>Power requirements</b>	90–132 VAC @ 47–63 Hz, 180–264 VAC @ 47–63 Hz	90–132 VAC @ 47–63 Hz, 180–264 VAC @ 47–63 Hz	90–132 VAC @ 47–63 Hz, 180–264 VAC @ 47–63 Hz
<b>Power consumption (typical/max)</b>	300 W/360 W	180 W/200 W	300 W/360 W
<b>Warranty</b>	One-year, next-business-day, on-site	One-year, next-business-day, on-site	One-year, next-business-day, on-site
<b>Mission Critical Support services</b>	Optional	Optional	Optional
<b>Servers supported*</b>	HP ProLiant servers, HP-LUX servers, HP AlphaServer systems	HP ProLiant servers, HP-LUX servers, HP AlphaServer systems	HP ProLiant servers, HP-LUX servers, HP AlphaServer systems

\* For specific servers supported by individual libraries, refer to product Quick Specs at [www.hp.com/go/tape](http://www.hp.com/go/tape). For complete software, servers, HBA and OS compatibility information, go to EBS at [www.hp.com/go/ebs](http://www.hp.com/go/ebs).

change  
+ hp

[www.hp.com/go/tape](http://www.hp.com/go/tape)

© 2005 Hewlett-Packard Development Company, L.P. The information contained herein is subject to change without notice. The only warranties for HP products and services are set forth in the express warranty statements accompanying such products and services. Nothing herein should be construed as constituting an additional warranty. HP shall not be liable for technical or editorial errors or omissions contained herein.

5982-6584EN Rev. 2, 3/2005

To order additional HP StorageWorks MSL collateral, reference the following publication numbers:  
HP StorageWorks MSL Tape Libraries Quick Reference Guide: 5983-0911EN  
HP StorageWorks MSL Tape Libraries Resource CD: 5983-0905EN



i n v e n t