

HP StorageWorks Enterprise Backup Solution (EBS) Hardware/Software Compatibility Matrix

January 2005 Version 1.0

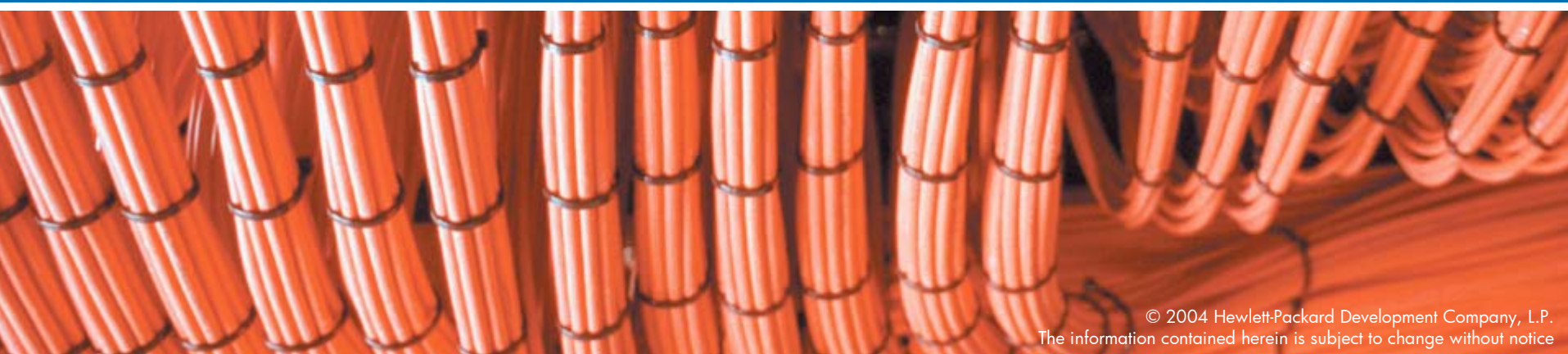


Start Here

The EBS Compatibility Matrix represents the latest tested software and hardware. Older versions may be supported, provided it was listed in a previous matrix. The legacy EBS compatibility matrices can be located at www.hp.com/go/ebs. While older versions of software and hardware may be supported, HP customer support may ask you to update components in order to eliminate known issues.

This matrix includes tape automation compatibility details for Direct Attach SCSI (DAS), Direct Attach Fibre (DAF or point-to-point fibre), and Storage Area Network (SAN) connection options. This matrix does not imply device availability. Products that are scheduled for removal from the EBS Compatibility Matrix next month will be highlighted in yellow. Automation products will then be moved to the Legacy Support Details page.

For information about tape drive compatibility and support, go to <http://www.hp.com/go/connect>. For more technical information about EBS and supported 3rd party arrays, go to the Enterprise Backup Solution Design Guide and ISV implementation guides located at <http://www.hp.com/go/ebs>



Enterprise Backup Solution Compatibility Matrix Index

(Click on topic to jump to that page)

The () icon indicates a hotlink. See [Sample Page Layout](#).

Topic	Page
Sample Page Layout	3
Libraries	4
Autoloaders	6
Operating Systems	10
RAID Arrays	13
Infrastructure	14
Servers & Workstations	17
Fibre Host Bus Adapters	20
SCSI Host Bus Adapters	23
Storage Software	26
Disk Array Multipath	27
Firmware & Drivers	28
Backup Application Details	38
Legacy Component Details	39
Useful Links	40
Advisories	41

Sample Page Layout

Black bar shows title of current page

Index menu, click to navigate to other sections

Yellow box indicates current section

Libraries - Application Support

DAS, DAF, and SAN Support	HP Data Protector	Attempo Time Navigator	BakBone NetVault	CA ARCserve (Win & NW)	CA ARCserve (LINUX & UNIX)	CommVault Galaxy	Legato NetWorker	Syncsort Backup Express	Tivoli Storage Manager	VERITAS Backup Exec	VERITAS NetBackup
Enterprise Libraries											
ESL E-Series 712e/322e (Ultrium 460)	✓ ⁹	✓	✓	✓ ²	✓	✓	✓	✓	✓	✓ ⁶	✓
ESL E-Series 712e/322e (Ultrium 460 FC)	✓ ⁹						✓		✓		✓
ESL E-Series 630e/286e (SDLT 320)	✓ ⁹	✓	✓	✓ ²	✓	✓	✓	✓	✓	✓ ⁶	✓
ESL 9595 (Ultrium 460)	✓	✓	✓	✓ ²	✓	✓	✓	✓	✓	✓	✓
ESL 9595 (Ultrium 230)	✓	✓	✓	✓ ²	✓	✓	✓	✓	✓	✓	✓
ESL 9595 S2	✓	✓	✓	✓ ²	✓	✓	✓	✓	✓	✓	✓
ESL 9595 SL	✓	✓	✓	✓ ²	✓	✓	✓	✓	✓	✓	✓
ESL 9326 SL	✓	✓	✓	✓ ²	✓	✓	✓	✓	✓	✓	✓
ESL 9326 DX ⁵	✓	✓	✓	✓ ²	✓	✓	✓	✓	✓	✓	✓
ESL 9322 (Ultrium 460)	✓	✓	✓	✓ ²	✓	✓	✓	✓	✓	✓	✓
ESL 9322 (Ultrium 230)	✓	✓	✓	✓ ²	✓	✓	✓	✓	✓	✓	✓
ESL 9322 S2	✓	✓	✓	✓ ²	✓	✓	✓	✓	✓	✓	✓
ESL 9198 SL	✓	✓	✓	✓ ²	✓	✓	✓	✓	✓	✓	✓
ESL 9198 DLX ⁵	✓	✓	✓	✓ ²	✓	✓	✓	✓	✓	✓	✓
ESL Multi-Unit Scalability ^{3,4}	✓	✓	✓		✓	✓	✓	✓	✓ ⁷		✓
ESL 9000 Mixed Media Support	✓	✓		✓ ²		✓	✓	✓	✓	✓ ⁸	✓
Mid-Range Libraries											
MSL 6060 (Ultrium 460)	✓	✓	✓	✓	✓	✓	✓	✓	✓	✓	✓
MSL 5060 (Ultrium 230)	✓	✓	✓	✓	✓	✓	✓	✓	✓	✓	✓
MSL 5052 S2	✓	✓	✓	✓	✓	✓	✓	✓	✓	✓	✓
MSL 5052 SL	✓	✓	✓	✓	✓	✓	✓	✓	✓	✓	✓
MSL 6030 (Ultrium 460)	✓	✓	✓	✓	✓	✓	✓	✓	✓	✓	✓
MSL 5030 (Ultrium 230)	✓	✓	✓	✓	✓	✓	✓	✓	✓	✓	✓
MSL 5026 S2	✓	✓	✓	✓	✓	✓	✓	✓	✓	✓	✓
MSL 5026 SL	✓	✓	✓	✓	✓	✓	✓	✓	✓	✓	✓
MSL 5026 DLX ⁵	✓	✓	✓	✓	✓	✓	✓	✓	✓	✓	✓
MSL Multi-Unit Scalability ^{3,4}	✓	✓	✓		✓	✓	✓	✓		✓ ⁸	✓
MSL Mixed Media Support	✓	✓				✓	✓	✓		✓ ⁸	✓
SSL 2020 TL ⁵	✓	✓	✓	✓ ⁶		✓	✓ ¹	✓	✓ ¹	✓ ⁶	✓ ¹

CLICK on product to go to product web page

CLICK on check mark to go to firmware/drivers page for this product

NOTES:

- 1) Win NT/2000 and Solaris support in homogeneous SAN environments only
- 2) NetWare is supported with ESL libraries in a homogeneous environment only
- 3) ESL multi-unit scalability is with a horizontal pass-through mechanism, and the MSL multi-unit scalability is with a vertical pass-through mechanism
- 4) Contact your ISV for scalability support
- 5) Not supported with IA-64 operating systems
- 6) Windows support only
- 7) Support is with IBM 6228 HBA only
- 8) Homogeneous Windows only
- 9) Not supported on OpenVMS and Linux RHEL 3.0

October 2004, v1.0

Notes pertaining to unique configurations

Matrix version

Current page number and buttons to navigate to previous and next pages

Libraries - Application Support

DAS, DAF, and SAN Support	HP Data Protector	Atempo Time Navigator	BakBone NetVault	CA ARCserve (Win & NW)	CA ARCserve (LINUX & UNIX)	CommVault Galaxy	EMC Legato NetWorker	Syncsort Backup Express	Tivoli Storage Manager	VERITAS Backup Exec	VERITAS NetBackup
Enterprise Libraries											
ESL E-Series 712e/322e (Ultrium 460)	✓	✓	✓	✓ ²	✓	✓	✓		✓	✓	✓
ESL E-Series 712e/322e (Ultrium 460 FC)	✓			✓ ²			✓		✓	✓	✓
ESL E-Series 630e/286e (SDLT 320)	✓	✓	✓	✓ ²	✓	✓	✓		✓	✓ ⁶	✓
ESL 9595 (Ultrium 460)	✓	✓	✓	✓ ²	✓	✓	✓	✓	✓	✓	✓
ESL 9595 (Ultrium 230)	✓	✓	✓	✓ ²	✓	✓	✓	✓	✓	✓	✓
ESL 9595 S2	✓	✓	✓	✓ ²	✓	✓	✓	✓	✓	✓	✓
ESL 9595 SL	✓	✓	✓	✓ ²	✓	✓	✓	✓	✓	✓	✓
ESL 9326 SL	✓	✓	✓	✓ ²	✓	✓	✓	✓	✓	✓	✓
ESL 9326 DX ⁵	✓	✓	✓	✓ ²	✓	✓	✓	✓	✓	✓	✓
ESL 9322 (Ultrium 460)	✓	✓	✓	✓ ²	✓	✓	✓	✓	✓	✓	✓
ESL 9322 (Ultrium 230)	✓	✓	✓	✓ ²	✓	✓	✓	✓	✓	✓	✓
ESL 9322 S2	✓	✓	✓	✓ ²	✓	✓	✓	✓	✓	✓	✓
ESL 9198 SL	✓	✓	✓	✓ ²	✓	✓	✓	✓	✓	✓	✓
ESL 9198 DLX ⁵	✓	✓	✓	✓ ²	✓	✓	✓	✓	✓	✓	✓
ESL 9000 Multi-Unit Scalability ^{3,4}	✓	✓	✓		✓	✓	✓	✓	✓ ⁷		✓
ESL Mixed Media	✓	✓ ⁹		✓ ²		✓ ⁹	✓		✓	✓ ⁸	✓
ESL Partitioning	✓			✓ ²	✓		✓		✓	✓ ⁸	✓
Mid-Range Libraries											
MSL 6060 (Ultrium 460)	✓	✓	✓	✓	✓	✓	✓	✓	✓	✓	✓
MSL 5060 (Ultrium 230)	✓	✓	✓	✓	✓	✓	✓	✓	✓	✓	✓
MSL 5052 S2	✓	✓	✓	✓	✓	✓	✓	✓	✓	✓	✓
MSL 5052 SL	✓	✓	✓	✓	✓	✓	✓	✓	✓	✓	✓
MSL 6030 (Ultrium 460)	✓	✓	✓	✓	✓	✓	✓	✓	✓	✓	✓
MSL 5030 (Ultrium 230)	✓	✓	✓	✓	✓	✓	✓	✓	✓	✓	✓
MSL 5026 S2	✓	✓	✓	✓	✓	✓	✓	✓	✓	✓	✓
MSL 5026 SL	✓	✓	✓	✓	✓	✓	✓	✓	✓	✓	✓
MSL 5026 DLX ⁵	✓	✓	✓	✓	✓	✓	✓	✓	✓	✓	✓
MSL Multi-Unit Scalability ^{3,4}	✓	✓	✓	✓	✓	✓	✓				✓
MSL Mixed Media Support	✓	✓		✓		✓	✓			✓ ⁸	✓
SSL 2020 TL ⁵	✓	✓	✓	✓ ⁶		✓	✓ ¹	✓	✓ ¹	✓ ⁶	✓ ¹

NOTES:

- 1) Win NT/2000 and Solaris support in homogeneous SAN environments only
- 2) NetWare is supported with ESL libraries in a homogeneous environment only
- 3) ESL multi-unit scalability is with a horizontal pass-through mechanism, and the MSL multi-unit scalability is with a vertical pass-through mechanism
- 4) Contact your ISV for scalability support

- 5) Not supported with IA-64 operating systems
- 6) Windows support only
- 7) Support is with IBM 6228 HBA only
- 8) Homogeneous Windows only
- 9) Mixed Media using Partitioning not supported.

Libraries - Controller Support

DAF and SAN Support ¹	e2400-FC 2G Interface Controller (FC-FC)	e2400-160 Interface Controller (FC-SCSI)	NSR E1200-160	NSR E2400	NSR E1200	NSR M2402	NSR N1200
Enterprise Libraries							
ESL E-Series 712e/322e (Ultrium 460)		✓					
ESL E-Series 712e/322e (Ultrium 460 FC)	✓						
ESL E-Series 630e/286e (SDLT320)		✓					
ESL 9595 (Ultrium 460)		✓				✓	
ESL 9595 (Ultrium 230)		✓		✓		✓	✓
ESL 9595 S2		✓		✓		✓	✓
ESL 9595 SL		✓		✓		✓	✓
ESL 9326 SL		✓		✓		✓	✓
ESL 9326 DX						✓	✓
ESL 9322 (Ultrium 460)		✓				✓	
ESL 9322 (Ultrium 230)		✓		✓		✓	✓
ESL 9322 S2		✓		✓		✓	✓
ESL 9198 SL		✓		✓		✓	✓
ESL 9198 DLX		✓		✓		✓	✓
ESL Multi-Unit Scalability ²		✓		✓		✓	✓
Interface Manager	✓	✓					
Mid-Range Libraries							
MSL 6060 (Ultrium 460)			✓			✓	
MSL 5060 (Ultrium 230)			✓		✓	✓	✓
MSL 5052 S2			✓		✓	✓	✓
MSL 5052 SL			✓		✓	✓	✓
MSL 6030 (Ultrium 460)			✓			✓	
MSL 5030 (Ultrium 230)			✓		✓	✓	✓
MSL 5026 S2			✓		✓	✓	✓
MSL 5026 SL			✓		✓	✓	✓
MSL 5026 DLX			✓		✓	✓	✓
MSL Multi-Unit Scalability			✓		✓	✓	✓
SSL 2020 TL						✓	✓

NOTE:

1) For ISV compatibility information with the routers, refer to the second [Infrastructure](#) page within this document or [click here](#).

2) Multi-unit configurations that include an Interface Manager card are restricted to two libraries

Autoloaders

DAS Support	Operating System Support	HP Data Protector	Atempo Time Navigator	BakBone NetVault	CA ARCserve	CommVault Galaxy	EMC Legato NetWorker	Syncsort Backup Express	Tivoli Storage Manager	VERITAS Backup Exec	VERITAS NetBackup	Native	
AutoLoaders¹													
SSL1016 Ultrium 460 Tape Autoloader	HP-UX 11.0	✓					✓		✓		✓	✓	
	HP-UX 11.11 (11i v1)	✓					✓		✓		✓	✓	
	HP-UX 11.23 (11i v2)	✓					✓					✓	
	Windows NT 4.0	✓	✓	✓	✓	✓		✓	✓	✓	✓	✓	
	Windows 2000 Server/AS	✓	✓	✓	✓	✓	✓	✓	✓	✓	✓	✓	
	Windows Server 2003 (32-bit)	✓			✓		✓		✓	✓	✓	✓	
	Windows Server 2003 (64-bit)	✓					✓		✓			✓	
	Tru64 5.1						✓					✓	
	Tru64 5.1A						✓					✓	
	Tru64 5.1B						✓					✓	
	Red Hat Advanced Server 2.1 (32-bit)						✓				✓	✓	
	Red Hat Advanced Server 2.1 (64-bit)	✓					✓						✓
	Red Hat Enterprise Linux 3.0 (32-bit)												✓
	Red Hat Enterprise Linux 3.0 (64-bit)							✓					✓
	United Linux 1.0/SuSE SLES 8 (32-bit)							✓					✓
	United Linux 1.0/SuSE SLES 8 (64-bit)	✓											
	NetWare 5.1	✓				✓					✓		
	NetWare 6.0	✓				✓					✓		
	NetWare 6.5					✓							
	Solaris 7	✓						✓		✓		✓	
Solaris 8	✓						✓		✓		✓		
Solaris 9	✓						✓				✓		
AIX 4.3.3 (32-bit)							✓		✓		✓		
AIX 5.1L (32-bit)									✓				
AIX 5.2 (32-bit)													
SSL1016 SDLT160/320 Tape Autoloader	HP-UX 11.0	✓					✓				✓	✓	
	HP-UX 11.11 (11i v1)	✓					✓				✓	✓	
	HP-UX 11.23 (11i v2)	✓										✓	
	Windows NT 4.0	✓	✓	✓	✓	✓		✓	✓	✓	✓	✓	
	Windows 2000 Server/AS	✓	✓	✓	✓	✓	✓	✓	✓	✓	✓	✓	
	Windows Server 2003 (32-bit)	✓			✓		✓		✓	✓	✓	✓	
	Windows Server 2003 (64-bit)	✓					✓		✓			✓	
	Tru64 5.1						✓					✓	
	Tru64 5.1A	✓					✓					✓	
	Tru64 5.1B	✓					✓					✓	
	Red Hat Advanced Server 2.1 (32-bit)	✓					✓				✓	✓	
	Red Hat Advanced Server 2.1 (64-bit)	✓					✓						✓
	Red Hat Enterprise Linux 3.0 (32-bit)												✓
	Red Hat Enterprise Linux 3.0 (64-bit)							✓					✓
	United Linux 1.0/SuSE SLES 8 (32-bit)	✓											✓
	United Linux 1.0/SuSE SLES 8 (64-bit)	✓											
	NetWare 5.1	✓				✓					✓		
	NetWare 6.0	✓				✓					✓		
	NetWare 6.5					✓							
	Solaris 7	✓						✓				✓	
Solaris 8	✓						✓				✓		
Solaris 9	✓						✓				✓		
AIX 4.3.3 (32-bit)	✓						✓		✓		✓		
AIX 5.1L (32-bit)							✓						
AIX 5.2 (32-bit)													

NOTE: 1) Autoloaders are only supported in Direct Attach SCSI configurations

Autoloaders

DAS Support	Operating System Support	HP Data Protector	Atempo Time Navigator	BakBone NetVault	CA ARCserve	CommVault Galaxy	EMC Legato NetWorker	Syncsort Backup Express	Tivoli Storage Manager	VERITAS Backup Exec	VERITAS NetBackup	Native
AutoLoaders¹												
1/8 Ultrium 460 Tape Autoloader	HP-UX 11.0	✓					✓		✓		✓	✓
	HP-UX 11.11 (11i v1)	✓					✓		✓		✓	✓
	HP-UX 11.23 (11i v2)	✓					✓					✓
	Windows NT 4.0	✓	✓	✓	✓	✓			✓	✓	✓	
	Windows 2000 Server/AS	✓	✓	✓	✓	✓	✓		✓	✓	✓	✓
	Windows Server 2003 (32-bit)	✓			✓	✓	✓		✓	✓	✓	✓
	Windows Server 2003 (64-bit)	✓					✓		✓			✓
	Tru64 5.1	✓					✓				✓	
	Tru64 5.1A	✓					✓				✓	
	Tru64 5.1B	✓					✓				✓	
	Red Hat Advanced Server 2.1 (32-bit)	✓						✓			✓	✓
	Red Hat Advanced Server 2.1 (64-bit)	✓						✓				✓
	Red Hat Enterprise Linux 3.0 (32-bit)											✓
	Red Hat Enterprise Linux 3.0 (64-bit)											✓
	United Linux 1.0/SuSE SLES 8 (32-bit)	✓										✓
	United Linux 1.0/SuSE SLES 8 (64-bit)	✓										✓
	NetWare 5.1	✓				✓					✓	
	NetWare 6.0	✓				✓					✓	
	NetWare 6.5					✓						
	Solaris 7	✓						✓		✓		✓
	Solaris 8	✓						✓		✓		✓
	Solaris 9	✓						✓		✓		✓
AIX 4.3.3 (32-bit)	✓						✓		✓		✓	
AIX 5.1L (32-bit)	✓						✓		✓		✓	
AIX 5.2 (32-bit)	✓						✓		✓		✓	
1/8 Ultrium 230 Tape Autoloader	HP-UX 11.0	✓							✓		✓	✓
	HP-UX 11.11 (11i v1)	✓							✓		✓	✓
	HP-UX 11.23 (11i v2)	✓										✓
	Windows NT 4.0	✓	✓	✓	✓	✓		✓	✓	✓	✓	
	Windows 2000 Server/AS	✓	✓	✓	✓	✓	✓	✓	✓	✓	✓	✓
	Windows Server 2003 (32-bit)	✓				✓	✓		✓	✓	✓	✓
	Windows Server 2003 (64-bit)	✓							✓			✓
	Tru64 5.1											
	Tru64 5.1A											
	Tru64 5.1B											
	Red Hat Advanced Server 2.1 (32-bit)						✓				✓	✓
	Red Hat Advanced Server 2.1 (64-bit)	✓					✓					✓
	Red Hat Enterprise Linux 3.0 (32-bit)											✓
	Red Hat Enterprise Linux 3.0 (64-bit)											✓
	United Linux 1.0/SuSE SLES 8 (32-bit)						✓					✓
	United Linux 1.0/SuSE SLES 8 (64-bit)	✓					✓					
	NetWare 5.1	✓				✓					✓	
	NetWare 6.0	✓				✓					✓	
	NetWare 6.5					✓						
	Solaris 7							✓		✓		✓
	Solaris 8							✓		✓		✓
	Solaris 9							✓		✓		✓
AIX 4.3.3 (32-bit)									✓			
AIX 5.1L (32-bit)									✓			
AIX 5.2 (32-bit)									✓			

NOTE: 1) Autoloaders are only supported in Direct Attach SCSI configurations

Autoloaders

DAS Support	Operating System Support	HP Data Protector	Atempo Time Navigator	BakBone NetVault	CA ARCserve	CommVault Galaxy	EMC Legato NetWorker	Syncsort Backup Express	Tivoli Storage Manager	VERITAS Backup Exec	VERITAS NetBackup	Native
AutoLoaders¹												
1/8 SDLT 160/320 Tape Autoloader	HP-UX 11.0	✓					✓		✓		✓	✓
	HP-UX 11.11 (11i v1)	✓					✓		✓		✓	✓
	HP-UX 11.23 (11i v2)	✓					✓					✓
	Windows NT 4.0	✓	✓	✓		✓			✓	✓	✓	
	Windows 2000 Server/AS	✓	✓	✓	✓	✓	✓		✓	✓	✓	✓
	Windows Server 2003 (32-bit)	✓			✓		✓		✓	✓	✓	✓
	Windows Server 2003 (64-bit)	✓			✓		✓		✓			✓
	Tru64 5.1						✓					
	Tru64 5.1A						✓					
	Tru64 5.1B						✓				✓	
	Red Hat Advanced Server 2.1 (32-bit)	✓				✓		✓			✓	✓
	Red Hat Advanced Server 2.1 (64-bit)	✓						✓				✓
	Red Hat Enterprise Linux 3.0 (32-bit)	✓										✓
	Red Hat Enterprise Linux 3.0 (64-bit)	✓										✓
	United Linux 1.0/SuSE SLES 8 (32-bit)	✓				✓						✓
	United Linux 1.0/SuSE SLES 8 (64-bit)	✓										
	NetWare 5.1	✓				✓					✓	
	NetWare 6.0	✓				✓					✓	
	NetWare 6.5	✓				✓					✓	
	Solaris 7	✓						✓		✓		✓
Solaris 8	✓						✓		✓		✓	
Solaris 9	✓						✓		✓		✓	
AIX 4.3.3 (32-bit)							✓		✓			
AIX 5.1L (32-bit)							✓		✓		✓	
AIX 5.2 (32-bit)							✓		✓		✓	

NOTE: 1) Autoloaders are only supported in Direct Attach SCSI configurations

Autoloaders

DAS Support	Operating System Support	HP Data Protector	Atempo Time Navigator	BakBone NetVault	CA ARCserve	CommVault Galaxy	EMC Legato NetWorker	Syncsort Backup Express	Tivoli Storage Manager	VERITAS Backup Exec	VERITAS NetBackup	Native	
AutoLoaders¹													
1/8 DLT vs80 Tape Autoloader	HP-UX 11.0	✓							✓			✓	
	HP-UX 11.11 (11i v1)	✓							✓			✓	
	HP-UX 11.23 (11i v2)	✓											
	Windows NT 4.0	✓	✓	✓	✓	✓		✓	✓	✓			
	Windows 2000 Server/AS	✓	✓	✓	✓	✓	✓	✓	✓	✓		✓	
	Windows Server 2003 (32-bit)	✓			✓		✓		✓	✓		✓	
	Windows Server 2003 (64-bit)	✓							✓				
	Tru64 5.1												
	Tru64 5.1A												
	Tru64 5.1B												
	Red Hat Advanced Server 2.1 (32-bit)							✓					✓
	Red Hat Advanced Server 2.1 (64-bit)	✓						✓					
	Red Hat Enterprise Linux 3.0 (32-bit)												✓
	Red Hat Enterprise Linux 3.0 (64-bit)												
	United Linux 1.0/SuSE SLES 8 (32-bit)							✓					✓
	United Linux 1.0/SuSE SLES 8 (64-bit)	✓						✓					
	NetWare 5.1	✓				✓					✓		
	NetWare 6.0	✓				✓					✓		
	NetWare 6.5												
	Solaris 7							✓		✓			
Solaris 8							✓		✓				
Solaris 9							✓		✓				
AIX 4.3.3 (32-bit)									✓				
AIX 5.1L (32-bit)									✓				
AIX 5.2 (32-bit)									✓				
SSL1016 DLT1 Tape Autoloader	HP-UX 11.0						✓		✓				
	HP-UX 11.11 (11i v1)						✓		✓				
	HP-UX 11.23 (11i v2)	✓											
	Windows NT 4.0	✓	✓	✓	✓	✓		✓	✓	✓ ²	✓		
	Windows 2000 Server/AS	✓	✓	✓	✓	✓	✓	✓	✓	✓ ²	✓		
	Windows Server 2003 (32-bit)								✓				
	Windows Server 2003 (64-bit)	✓							✓				
	Tru64 5.1						✓						
	Tru64 5.1A						✓						
	Tru64 5.1B						✓						
	Red Hat Advanced Server 2.1 (32-bit)						✓						
	Red Hat Advanced Server 2.1 (64-bit)	✓					✓						
	Red Hat Enterprise Linux 3.0 (32-bit)												
	Red Hat Enterprise Linux 3.0 (64-bit)												
	United Linux 1.0/SuSE SLES 8 (32-bit)						✓						
	United Linux 1.0/SuSE SLES 8 (64-bit)	✓					✓						
	NetWare 5.1					✓							
	NetWare 6.0					✓							
	NetWare 6.5												
	Solaris 7							✓		✓			
Solaris 8							✓		✓				
Solaris 9							✓		✓				
AIX 4.3.3 (32-bit)							✓		✓				
AIX 5.1L (32-bit)									✓				
AIX 5.2 (32-bit)									✓				

NOTE: 1) Autoloaders are only supported in Direct Attach SCSI configurations. 2) Supported with BE 9.0 and later only

Operating Systems Overview

DAS, DAF, and SAN Support	HP Data Protector	Atempo Time Navigator	BakBone NetVault	CA ARCserve (Win & NW)	CA ARCserve (LINUX & UNIX)	CommVault Galaxy	EMC Legato NetWorker	Syncsort Backup Express	Tivoli Storage Manager	VERITAS Backup Exec	VERITAS NetBackup
Operating Systems ⁶											
HP-UX 11.0	✓	✓	✓		✓	✓	✓	✓	✓		✓
HP-UX 11.11 (11i v1)	✓	✓	✓		✓	✓	✓	✓	✓		✓
HP-UX 11.23 (11i v2)	✓	✓ ²	✓ ²				✓				
Windows NT 4.0		✓	✓	✓		✓		✓	✓	✓	✓
Windows 2000 Server/AS	✓	✓	✓	✓		✓	✓	✓	✓	✓	✓
Windows Server 2003 (32-bit)	✓	✓	✓	✓		✓	✓	✓	✓	✓	✓
Windows Server 2003 (64-bit)	✓	✓				✓	✓	✓	✓		✓
Tru64 5.1 ³							✓				✓
Tru64 5.1A ³	✓	✓	✓		✓ ⁹	✓	✓	✓			✓
Tru64 5.1B ³	✓	✓	✓			✓	✓	✓			✓
OpenVMS 7.3-1 ^{3, 7, 8, 10}	✓										
OpenVMS 7.3-2 ^{3, 8, 10}	✓										
Red Hat Advanced Server 2.1 (32-bit)	✓	✓	✓		✓	✓	✓	✓	✓		✓
Red Hat Advanced Server 2.1 (64-bit)	✓	✓	✓				✓				
Red Hat Enterprise Linux 3.0 (32-bit)	✓	✓	✓		✓		✓		✓		✓
Red Hat Enterprise Linux 3.0 (64-bit)	✓	✓	✓				✓				
United Linux 1.0/SuSE SLES 8 (32-bit)	✓	✓	✓		✓		✓				✓
United Linux 1.0/SuSE SLES 8 (64-bit)	✓	✓					✓				
NetWare 5.1	✓		✓	✓ ⁵				✓		✓	
NetWare 6.0	✓			✓ ⁵		✓		✓		✓	
NetWare 6.5	✓			✓ ⁵		✓				✓	
Solaris 7	✓					✓	✓		✓		✓
Solaris 8	✓	✓	✓		✓	✓	✓	✓	✓		✓
Solaris 9	✓	✓	✓		✓	✓	✓	✓	✓		✓
AIX 4.3.3	✓ ⁴		✓			✓	✓		✓		✓
AIX 5.1L	✓ ⁴	✓			✓	✓	✓ ¹	✓	✓		✓
AIX 5.2	✓ ⁴	✓	✓		✓	✓	✓		✓		✓

NOTES:

- 1) DLT8000 products not supported
- 2) HP Integrity Superdome & Mid-Range (rx7000-rx8000, IA-64) not supported
- 3) Ultrium 230 (LTO) not supported
- 4) Robot control is not supported
- 5) NetWare is supported with ESL libraries in a homogeneous environment only.
- 6) Other Operating Systems not listed above may be supported within EBS by the respective ISVs as LAN clients
- 7) Supported only with the original version 7.3-1 mk driver (SYS\$MKDRIVER.EXE)
- 8) Refer to <http://h71000.www7.hp.com/openvms/Storage.html> for additional data protection applications and solution information for OpenVMS, which includes HP and 3rd Party Heterogeneous Backup Solutions, as well as OpenVMS-specific solutions including ABS (Archive Backup Systems) and SLS (Storage Library System)
- 9) Support is with BEB v10.5 only
- 10) OpenVMS supported in switched fabric configurations only.

Operating Systems Version Details

DAS, DAF, and SAN Support	Current Release	HP Data Protector	Atempo Time Navigator	BakBone NetVault	CA ARCserve (Win & NW)	CA ARCserve (LINUX & UNIX)	CommVault Galaxy	EMC Legato NetWorker	Syncsort Backup Express	Tivoli Storage Manager	VERITAS Backup Exec	VERITAS NetBackup
Operating Systems												
HP-UX 11.0	(HWE 1100) March 2004	(HWE 1100) March 2004	(HWE 1100) March 2004	(HWE 1100) March 2004		11.00 w/SP56 (HWE 11.0) PHKL_25769	(HWE 1100) September 2003	(HWE 1100) March 2004	(HWE 1100) September 2003	(HWE 1100) March 2004		(HWE 1100) March 2004
HP-UX 11.11 (11i v1)	(HWE 11.11) June 2004	(HWE 11.11) June 2004	(HWE 11.11) December 2003	(HWE 11.11) December 2003		11.11 w/SP56 (HWE 11.11) PHKL_22857	(HWE 11.11) September 2003	(HWE 11.11) June 2004	(HWE 11.11) September 2003	(HWE 11.11) June 2004		(HWE 11.11) June 2004
HP-UX 11.23 (11i v2)	(HWE 11.23) March 2004	(HWE 11.23) March 2004	(HWE 11.23) March 2004	(HWE 11.23) March 2004				(HWE 11.23) March 2004				
Windows NT 4.0	sp6a	sp6a	sp6a	sp6a	sp6a		sp6a	sp6a	sp6a	sp6a	sp6a	sp6a
Windows 2000 Server/AS	sp4	sp4	sp4	sp4	sp4		sp4	sp4	sp4	sp4	sp4	sp4
Windows Server 2003 (32-bit)	✓	✓	✓	✓	✓		✓	✓	✓	✓	✓	✓
Windows Server 2003 (64-bit)	✓	✓	✓				✓		✓	✓		
Tru64 5.1	5.1 pk6							5.1 pk6				5.1 pk6
Tru64 5.1A	5.1A pk6	5.1A pk6	5.1A pk6	5.1A pk6		5.1A pk6 ⁴	5.1A pk6	5.1A pk6	5.1A pk6			5.1A pk6
Tru64 5.1B	5.1B pk4	5.1B pk4	5.1B pk3	5.1B pk3			5.1B pk3	5.1B pk4	5.1B pk3			5.1B pk4
OpenVMS 7.3-1 ¹	7.3-1	7.3-1										
OpenVMS 7.3-2	7.3-2	7.3-2										
Red Hat Advanced Server 2.1 (32-bit)	✓ ²	✓ ²	✓ ²	✓ ²		✓ ²	✓ ²	✓ ²	✓ ²	✓ ²		✓ ²
Red Hat Advanced Server 2.1 (64-bit)	✓ ²	✓ ²	✓ ²	✓ ²				✓ ²				
Red Hat Enterprise Linux 3.0 (32-bit)	✓ ²	✓ ²	✓ ²	✓ ²		✓ ²		✓ ²		✓ ²		✓ ²
Red Hat Enterprise Linux 3.0 (64-bit)	✓ ²	✓ ²	✓ ²	✓ ²				✓ ²				
United Linux 1.0/SuSE SLES 8 (32-bit)	✓ ²	✓ ²	✓ ²	✓ ²		✓ ²		✓ ²				✓ ²
United Linux 1.0/SuSE SLES 8 (64-bit)	✓ ²	✓ ²	✓ ²					✓ ²				
NetWare 5.1	5.1 sp7	5.1 sp7		5.1 sp5	5.1 sp7				5.1 sp6		5.1 sp7	
NetWare 6.0	6.0 sp5	6.0 sp5			6.0 sp5		6.0 sp4		6.0 sp3		6.0 sp5	
NetWare 6.5	6.5 sp2	6.5 sp2			6.5 sp2		6.5 sp1				6.5 sp2	
Solaris 7	7	7					7	7		7		7
Solaris 8	8	8	8	8		8	8	8	8	8		8
Solaris 9	9	9	9	9		9	9	9	9	9		9
AIX 4.3.3	4.3.3	4.3.3 ³		4.3.3			4.3.3	4.3.3		4.3.3		4.3.3
AIX 5.1L	5.1L	5.1L ³	5.1L			5.1L	5.1L	5.1L	5.1L	5.1L		5.1L
AIX 5.2	5.2	5.2 ³	5.2	5.2		5.2	5.2	5.2		5.2		5.2

NOTES:

- 1) Supported only with the original version 7.3-1 mk driver (SYS\$MKDRIVER.EXE)
- 2) EBS is not dependent on specific kernel errata levels. For required/supported kernel errata, refer to your online storage array and backup application support documentation.
- 3) Robot control is not supported
- 4) Support is with BEB v10.5 only

Operating Systems - High Availability Support

DAS, DAF, and SAN Support	HP Data Protector	Atempo Time Navigator	BakBone NetVault	CA ARCserve (Win & NW)	CA ARCserve (LINUX & UNIX)	CommVault Galaxy	EMC Legato NetWorker	Syncsort Backup Express	Tivoli Storage Manager	VERITAS Backup Exec	VERITAS NetBackup
High Availability³											
HP-UX (Service Guard) ¹	✓ ²						✓ ²				✓ ²
Windows (MSCS)	✓ ¹	✓	✓			✓	✓	✓	✓	✓ ⁴	✓
Tru64 (TruCluster)		✓					✓	✓			✓
NetWare 5.1 (NWCS)										✓	
NetWare 6.0 (NWCS)						✓		✓		✓	
NetWare 6.5 (NWCS)						✓				✓	
VERITAS Cluster Server											✓

NOTES:

- 1) Supported on Windows 2000 only.
- 2) ATS is not supported.
- 3) Refer to the EBS Design Guide for details on failover configurations.
For Operating Systems not listed, please refer to the ISV's web page for supported High Availability configurations.
- 4) Support includes NAS9000 and NAS4000 platforms.

RAID Arrays

SAN Support	HP Data Protector	Atempo Time Navigator	BakBone NetVault	CA ARCserve (Win & NW)	CA ARCserve (LINUX & UNIX)	CommVault Galaxy	EMC Legato NetWorker	Syncsort Backup Express	Tivoli Storage Manager	VERITAS Backup Exec	VERITAS NetBackup
RAID Arrays											
XP 12000 ¹	✓	✓	✓	✓	✓	✓	✓	✓	✓	✓	✓
XP 1024/128 ¹	✓	✓	✓	✓	✓	✓	✓	✓	✓	✓	✓
XP 48/512 ¹	✓	✓	✓	✓	✓	✓	✓	✓	✓	✓	✓
Zero Downtime with XP	✓										
Instant Recovery with XP	✓										
Enterprise Virtual Array EVA 5000 ^{1,3,4}	✓	✓	✓	✓	✓	✓	✓	✓	✓	✓	✓
Enterprise Virtual Array EVA 3000 ^{1,3,4}	✓	✓	✓	✓	✓	✓	✓	✓	✓	✓	✓
VA 7410/7110 ^{1,7}	✓			✓			✓			✓	✓
VA 7400/7100 ^{1,7}	✓			✓			✓			✓	✓
EMA 16000 ¹	✓	✓	✓	✓	✓	✓	✓	✓	✓	✓	✓
EMA 12000/8000 ¹	✓	✓	✓	✓	✓	✓	✓	✓	✓	✓	✓
MSA1500 ^{1, 3}	✓			✓			✓		✓	✓	✓
MSA1000 Small Business SAN Kit	✓ ⁵			✓ ⁶						✓ ⁶	
MSA1000 ^{2, 3}	✓	✓	✓	✓	✓	✓	✓	NT/WIN2K and NetWare only	✓	✓	✓

NOTES:

- 1) Consult with your hp solutions provider for disk array SAN compatibility information
- 2) For compatibility information about the optional MSA SAN Switch, refer to the [Infrastructure](#) page within this document for support details
- 3) NetWare supported with FCA2210 HBA only
- 4) Supported with Fibre Channel and FATA disk drives.

- 5) LINUX and Windows support only
- 6) Windows support only
- 7) VA7xxx arrays require separate HBA's for disk and tape.

Infrastructure - SAN Switch Support

SAN Support	e2400-FC 2G Interface Controller	E2400-160 FC Interface Controller	NSR E1200-160	NSR E2400	NSR E1200	NSR M2402	NSR N1200
Switches¹							
Director Switch 2/140	✓	✓	✓	✓	✓	✓	✓
Director Switch 2/64	✓	✓	✓	✓	✓	✓	✓
Edge Switch 2/32	✓	✓	✓	✓	✓	✓	✓
Edge Switch 2/24	✓	✓	✓	✓	✓	✓	✓
Edge Switch 2/16	✓	✓	✓	✓	✓	✓	✓
Edge Switch 2/12	✓	✓	✓	✓	✓	✓	✓
SAN Director 2/128	✓	✓	✓	✓	✓	✓	✓
Core Switch 2/64	✓	✓	✓	✓	✓	✓	✓
SAN Switch 2/32	✓	✓	✓	✓	✓	✓	✓
SAN Switch 2/16N	✓	✓	✓	✓	✓	✓	✓
SAN Switch 2/16V	✓	✓	✓	✓	✓	✓	✓
SAN Switch 2/16	✓	✓	✓	✓	✓	✓	✓
SAN Switch 2/8V	✓	✓	✓	✓	✓	✓	✓
SAN Switch 2/8	✓	✓	✓	✓	✓	✓	✓
SAN Switch 2/16-EL	✓	✓	✓	✓	✓	✓	✓
SAN Switch 2/8-EL	✓	✓	✓	✓	✓	✓	✓
SAN Switch 16	✓	✓	✓	✓	✓	✓	✓
SAN Switch 8	✓	✓	✓	✓	✓	✓	✓
SAN Switch 16EL	✓	✓	✓	✓	✓	✓	✓
SAN Switch 8EL	✓	✓	✓	✓	✓	✓	✓
FC Switch 16B	✓	✓	✓	✓	✓	✓	✓
FC Switch 8B	✓	✓	✓	✓	✓	✓	✓
MSA SAN Switch 2/8	✓	✓	✓	✓	✓	✓	✓
Cisco MDS 9506	✓	✓	✓	✓	✓	✓	✓
Cisco MDS 9509	✓	✓	✓	✓	✓	✓	✓
Cisco MDS 9216	✓	✓	✓	✓	✓	✓	✓
Cisco MDS 9120	✓	✓	✓	✓	✓	✓	✓
Cisco MDS 9140	✓	✓	✓	✓	✓	✓	✓
Cisco MDS 9216a	✓	✓	✓	✓	✓	✓	✓
Cisco MDS 9216i	✓	✓	✓	✓	✓	✓	✓

NOTES:

1) Refer to [Heterogeneous Open SAN Design Reference Guide](http://h18000.www1.hp.com/products/storageworks/san/documentation.html) for switch configuration rules and guidelines located at:
<http://h18000.www1.hp.com/products/storageworks/san/documentation.html> or consult with your hp solutions provider for assistance

Infrastructure - Multi-Protocol Router and Gateway Support

SAN Support	e2400-FC 2G Interface Controller	E2400-160 FC Interface Controller	NSR E1200-160	NSR E2400	NSR E1200	NSR M2402	NSR N1200
Multi-Protocol Routers and Gateways ¹							
Multi-Protocol Router ^{2,3}	✓	✓	✓	✓	✓	✓	✓
IP Storage Router 2122-2 ⁴	✓	✓	✓	✓	✓	✓	✓

NOTES:

- 1) Refer to [Heterogeneous Open SAN Design Reference Guide](#) for configuration rules and guidelines located at: <http://h18000.www1.hp.com/products/storageworks/san/documentation.html> or consult with your hp solutions provider for assistance
- 2) Supported with all backup application/operating system combinations.
- 3) Supported as a SAN-to-SAN interconnect only. Direct connection of libraries or hosts to the MP Router is not supported.
- 4) Supported for FC-IP SAN-to-SAN interconnect only.

Infrastructure - Interface Controllers and Serverless Support

DAF and SAN Support	HP Data Protector	Atempo Time Navigator	BakBone NetVault	CA ARCserve (Win & NW)	CA ARCserve (LINUX & UNIX)	CommVault Galaxy	EMC Legato NetWorker	Syncsort Backup Express	Tivoli Storage Manager	VERITAS Backup Exec	VERITAS NetBackup
Fibre Channel Interface Controller											
Interface Manager	✓	✓	✓	✓	✓	✓	✓		✓	✓	✓
e2400-FC 2G Interface Controller (FC-FC)	✓						✓		✓	✓ ⁸	✓
e2400-160 Interface Controller (FC-SCSI)	✓	✓	✓	✓	✓	✓	✓	✓	✓	✓	✓
NSR E1200-160	✓	✓	✓	✓	✓	✓	✓	✓	✓	✓	✓
NSR E2400	✓	✓	✓	✓	✓	✓	✓	✓	✓	✓	✓
NSR E1200	✓	✓	✓	✓	✓	✓	✓	✓	✓	✓	✓
NSR M2402	✓	✓	✓	✓	✓	✓	✓	✓	✓	✓	✓
NSR N1200	✓	✓	✓	✓	✓	✓	✓	✓	✓	✓	✓
Serverless Backup^{1,2,6,9,10} (SAN Support Only)											
e2400-FC 2G Interface Controller (FC-FC)											
e2400-160 Interface Controller (FC-SCSI)	✓ ⁷										
NSR E2400				✓ ³						✓ ⁴	✓ ⁵
NSR E1200				✓ ³						✓ ⁴	✓ ⁵
NSR M2402	✓ ⁷			✓ ³						✓ ⁴	✓ ⁵
NSR N1200				✓ ³						✓ ⁴	✓ ⁵

NOTES:

- 1) Serverless backup supported in single path configurations only.
- 2) Serverless backup not supported with 5.3.0b or 5.4.25 NSR firmware.
- 3) Windows 2000 and 2003 Serverless option with EVA, MSA1000, HSG only.
- 4) Windows 2000 ServerFree opt with HSG, EVA, MSA1000 only.
- 5) Supported with Solaris 8 & 9, VERITAS NetBackup 4.5 and 5.X, nbu_snap with HSG and EVA only (master router configuration not supported)
- 6) Serverless Backup functionality is not available with the e1200-160 interface controller.
- 7) Supported with XP128/1024 and version 5.1.08 of NSR firmware.
- 8) Support is with Windows only.
- 9) The LUN ID of the disk volume to be backed up must be the same for the host and the interface controller
- 10) Serverless backup is restricted to Qlogic Windows driver version 8.2.0.73 or any version of Emulex HBA driver.

Servers and Workstations

DAS, DAF, and SAN Support	HP Data Protector	Atempo Time Navigator	BakBone NetVault	CA ARCserve (Win & NW)	CA ARCserve (LINUX & UNIX)	CommVault Galaxy	EMC Legato NetWorker	Syncsort Backup Express	Tivoli Storage Manager	VERITAS Backup Exec	VERITAS NetBackup
Servers											
HP Integrity Superdome and Mid-Range (rx7000-rx8000, IA-64)	✓						✓				
HP 9000 Superdome and Mid-Range (rp7000-rp8000, PA-RISC)	✓	✓	✓		✓		✓				✓
HP 9000 Entry-Level (rp1000-rp6000, PA-RISC)	✓	✓	✓		✓	✓	✓	✓	✓		✓
HP Integrity Entry-Level (rx1000-rx6000, IA-64)	✓ ²	✓	✓			✓	✓	✓	✓		
HP A, L, N, and V Class (pa-risc)	✓	✓	✓		✓	✓	✓	✓	✓		✓
HP K, R, and D Class (pa-risc)	✓	✓	✓								
HP ProLiant	✓	✓	✓	✓	✓	✓	✓	✓	✓	✓	✓
HP ProLiant Blade Server	✓	✓		✓	✓	✓	✓	✓	✓	✓	✓
HP NetServer	✓	✓	✓	✓	✓	✓	✓	✓	✓	✓	✓
HP AlphaServer	✓	✓	✓		✓	✓	✓	✓			✓
IBM RS/6000	✓	✓	✓		✓	✓	✓	✓	✓		✓
Sun UltraSPARC	✓	✓	✓		✓	✓	✓	✓	✓		✓
Sun Sun Fire	✓	✓	✓		✓	✓	✓	✓	✓		✓
Third Party X86	✓	✓	✓	✓	✓	✓	✓	✓	✓	✓	✓
Workstations											
HP xz series (IA) ²	✓										
HP B-Class (pa-risc)	✓										✓
HP C-Class (pa-risc)	✓										✓
HP J-Class (pa-risc)	✓										✓
ProLiant Storage Server (NAS)											
NAS 9000s	✓	✓	✓	✓	✓	✓	✓			✓	✓ ³
NAS 4000s	✓	✓	✓	✓	✓	✓	✓			✓	✓ ³
ML370G4 Storage Server	✓			✓						✓	
NAS 8000	✓							✓			
NAS e7000	✓	✓	✓	✓	✓	✓	✓	✓	✓	✓	✓
NAS 1500s	✓			✓						✓	
NAS 500s	✓			✓						✓	
NAS 2000s	✓	✓	✓	✓	✓					✓	
NAS 1200s	✓	✓	✓	✓	✓					✓	
NAS B3000	✓	✓	✓	✓	✓	✓	✓	✓	✓	✓	✓
NAS B2000	✓	✓	✓	✓	✓	✓	✓	✓	✓	✓	✓

NOTES:

- 1) Ultrium 230 support only
- 2) Data Protector 5.0 support in 32-bit emulation mode
- 3) Requires NetBackup 5.0 MP2 or later.

ProLiant Server Support ¹

DAS, DAF, and SAN Support	ESL E-Series	ESL 9595	ESL 9326	ESL 9322	ESL 9198	MSL6060	MSL6030	MSL5052	MSL5026	1/8 Autoloader	SSL1016 Autoloader
BL Series											
BL10e	Windows Linux	Windows Linux	Windows Linux	Windows Linux	Windows Linux	Windows Linux	Windows Linux	Windows Linux	Windows Linux	Windows Linux	Windows Linux
BL20p	Windows Linux NetWare	Windows Linux NetWare	Windows Linux NetWare	Windows Linux NetWare	Windows Linux NetWare	Windows Linux NetWare	Windows Linux NetWare	Windows Linux NetWare	Windows Linux NetWare	Windows Linux NetWare	Windows Linux NetWare
BL30p	Windows Linux	Windows Linux	Windows Linux	Windows Linux	Windows Linux	Windows Linux	Windows Linux	Windows Linux	Windows Linux	Windows Linux	Windows Linux
BL40p	Windows Linux	Windows Linux	Windows Linux	Windows Linux	Windows Linux	Windows Linux	Windows Linux	Windows Linux	Windows Linux	Windows Linux	Windows Linux
DL Series											
DL140	Windows Linux	Windows Linux	Windows Linux	Windows Linux	Windows Linux	Windows Linux	Windows Linux	Windows Linux	Windows Linux	Windows Linux	Windows Linux
DL145	Windows Linux	Windows Linux	Windows Linux	Windows Linux	Windows Linux	Windows Linux	Windows Linux	Windows Linux	Windows Linux	Windows Linux	Windows Linux
DL320	Windows Linux	Windows Linux	Windows Linux	Windows Linux	Windows Linux	Windows Linux	Windows Linux	Windows Linux	Windows Linux	Windows Linux	Windows Linux
DL360	Windows Linux NetWare	Windows Linux NetWare	Windows Linux NetWare	Windows Linux NetWare	Windows Linux NetWare	Windows Linux NetWare	Windows Linux NetWare	Windows Linux NetWare	Windows Linux NetWare	Windows Linux NetWare	Windows Linux NetWare
DL380	Windows Linux NetWare	Windows Linux NetWare	Windows Linux NetWare	Windows Linux NetWare	Windows Linux NetWare	Windows Linux NetWare	Windows Linux NetWare	Windows Linux NetWare	Windows Linux NetWare	Windows Linux NetWare	Windows Linux NetWare
DL560	Windows Linux NetWare	Windows Linux NetWare	Windows Linux NetWare	Windows Linux NetWare	Windows Linux NetWare	Windows Linux NetWare	Windows Linux NetWare	Windows Linux NetWare	Windows Linux NetWare	Windows Linux NetWare	Windows Linux NetWare
DL580	Windows Linux NetWare	Windows Linux NetWare	Windows Linux NetWare	Windows Linux NetWare	Windows Linux NetWare	Windows Linux NetWare	Windows Linux NetWare	Windows Linux NetWare	Windows Linux NetWare	Windows Linux NetWare	Windows Linux NetWare
DL585	Windows Linux	Windows Linux	Windows Linux	Windows Linux	Windows Linux	Windows Linux	Windows Linux	Windows Linux	Windows Linux	Windows Linux	Windows Linux
DL740	Windows Linux	Windows Linux	Windows Linux	Windows Linux	Windows Linux	Windows Linux	Windows Linux	Windows Linux	Windows Linux	Windows Linux	Windows Linux
DL760	Windows Linux	Windows Linux	Windows Linux	Windows Linux	Windows Linux	Windows Linux	Windows Linux	Windows Linux	Windows Linux	Windows Linux	Windows Linux

NOTES:

1) This information does not imply specific OS, server platform generation, or Linux kernel errata version support. Please go to the following links to determine which OS and kernel errata versions are supported for your server:

Windows OS/ProLiant Server Support Matrix:

<http://h10018.www1.hp.com/wwsolutions/windows/index-all.html>

Linux OS/ProLiant Server Support Matrix:

<http://h18004.www1.hp.com/products/servers/linux/hpLinuxcert.html>

NetWare OS/ProLiant Server Support Matrix:

<http://h10018.www1.hp.com/wwsolutions/novell/index-all.html>

ProLiant Server Support

DAS, DAF, and SAN Support	ESL E-Series	ESL 9595	ESL 9326	ESL 9322	ESL 9198	MSL6060	MSL6030	MSL5052	MSL5026	1/8 Autoloader	SSL1016 Autoloader
ML Series											
ML150	Windows Linux NetWare	Windows Linux NetWare	Windows Linux NetWare	Windows Linux NetWare	Windows Linux NetWare	Windows Linux NetWare	Windows Linux NetWare	Windows Linux NetWare	Windows Linux NetWare	Windows Linux NetWare	Windows Linux NetWare
ML310	Windows Linux NetWare	Windows Linux NetWare	Windows Linux NetWare	Windows Linux NetWare	Windows Linux NetWare	Windows Linux NetWare	Windows Linux NetWare	Windows Linux NetWare	Windows Linux NetWare	Windows Linux NetWare	Windows Linux NetWare
ML330	Windows Linux NetWare	Windows Linux NetWare	Windows Linux NetWare	Windows Linux NetWare	Windows Linux NetWare	Windows Linux NetWare	Windows Linux NetWare	Windows Linux NetWare	Windows Linux NetWare	Windows Linux NetWare	Windows Linux NetWare
ML350	Windows Linux NetWare	Windows Linux NetWare	Windows Linux NetWare	Windows Linux NetWare	Windows Linux NetWare	Windows Linux NetWare	Windows Linux NetWare	Windows Linux NetWare	Windows Linux NetWare	Windows Linux NetWare	Windows Linux NetWare
ML370	Windows Linux NetWare	Windows Linux NetWare	Windows Linux NetWare	Windows Linux NetWare	Windows Linux NetWare	Windows Linux NetWare	Windows Linux NetWare	Windows Linux NetWare	Windows Linux NetWare	Windows Linux NetWare	Windows Linux NetWare
ML530	Windows Linux NetWare	Windows Linux NetWare	Windows Linux NetWare	Windows Linux NetWare	Windows Linux NetWare	Windows Linux NetWare	Windows Linux NetWare	Windows Linux NetWare	Windows Linux NetWare	Windows Linux NetWare	Windows Linux NetWare
ML570	Windows Linux NetWare	Windows Linux NetWare	Windows Linux NetWare	Windows Linux NetWare	Windows Linux NetWare	Windows Linux NetWare	Windows Linux NetWare	Windows Linux NetWare	Windows Linux NetWare	Windows Linux NetWare	Windows Linux NetWare
tc Server											
tc2120	Windows	Windows	Windows	Windows	Windows	Windows	Windows	Windows	Windows	Windows	Windows

NOTES:

1) This information does not imply specific OS or Linux kernel errata versions. Please go to the following links to determine which OS and kernel errata versions are supported for your server:

Windows OS/ProLiant Server Support Matrix:

<http://h10018.www1.hp.com/wwsolutions/windows/index-all.html>

Linux OS/ProLiant Server Support Matrix:

<http://h18004.www1.hp.com/products/servers/linux/hpLinuxcert.html>

NetWare OS/ProLiant Server Support Matrix:

<http://h10018.www1.hp.com/wwsolutions/novell/index-all.html>

Fibre Host Bus Adapters

SAN and DAF Support	HP Data Protector	Atempo Time Navigator	BakBone NetVault	CA ARCserve (Win & NW)	CA ARCserve (LINUX & UNIX)	CommVault Galaxy	EMC Legato NetWorker	Syncsort Backup Express	Tivoli Storage Manager	VERITAS Backup Exec	VERITAS NetBackup
Fibre Host Bus Adapters¹											
HP-UX (IA-64)											
A9782 (2G Combo Card)	✓	✓	✓				✓				
A9784 (2G Combo Card)	✓	✓	✓				✓				
A6795A (2G)	✓						✓				
A6826A (2G)	✓	✓	✓				✓				
HP-UX (PA-RISC)											
A9782 (2G Combo Card)	✓						✓		✓		✓
A9784 (2G Combo Card)	✓						✓		✓		✓
A6826A (2G)	✓				✓		✓		✓		✓
A6795A (2G)	✓	✓	✓		✓	✓	✓	✓	✓		✓
A6684A (1G)	✓						✓				✓
A6685A (1G)	✓						✓				✓
A5158A (1G)	✓	✓	✓		✓	✓	✓	✓	✓		✓
OpenVMS											
FCA2384 (2G - PCI-X)	✓										
Tru64											
FCA2354 (2G - PCI)	✓	✓	✓		✓	✓	✓	✓			✓
FCA2384 (2G - PCI-X)	✓						✓				✓
KGPSA -CA (1G - PCI)	✓	✓	✓		✓	✓	✓	✓			✓

NOTES:

1) Refer to [Heterogeneous Open SAN Design Reference Guide](#) for configuration rules and guidelines located at: <http://h18000.www1.hp.com/products/storageworks/san/documentation.html> or consult with your hp solutions provider for assistance

Fibre Host Bus Adapters

SAN and DAF Support	HP Data Protector	Atempo Time Navigator	BakBone NetVault	CA ARCserve (Win & NW)	CA ARCserve (LINUX & UNIX)	CommVault Galaxy	EMC Legato NetWorker	Syncsort Backup Express	Tivoli Storage Manager	VERITAS Backup Exec	VERITAS NetBackup
Fibre Host Bus Adapters¹											
Solaris											
FCA2257P (2G - PCI)	✓				✓	✓	✓	✓	✓		✓
FCA2257C (1G - cPCI)	✓				✓	✓	✓	✓	✓		✓
FCA2257S (1G - SBus)	✓				✓	✓	✓	✓	✓		✓
SWSA4-SC 64-bit (1G - SBus)	✓	✓	✓		✓	✓	✓	✓	✓		✓
SWSA4-PC 32-bit (1G - PCI)							✓		✓		✓
SG-XPCI2FC-QF2 (X6768A) (2G - PCI-X)	✓ ^{2,5}	✓	✓			✓ ²	✓ ²				✓ ²
SG-XPCI1FC-QF2 (X6767A) (2G - PCI-X)	✓ ^{2,5}					✓ ²	✓ ²				✓ ²
SG-XPCI1FC-JF2 (2G-PCI-X)	✓ ²						✓ ²				✓ ²
SG-XPCI2FC-JF2 (2G-PCI-X)	✓ ²						✓ ²				✓ ²
FCX-6562 (2G - PCI)							✓ ²				✓ ³
FCX2-6562 (2G - PCI)							✓ ²				✓ ³
JNI FCE6460 (2G - PCI)	✓	✓	✓		✓	✓	✓	✓	✓		✓
JNI FCC6460 (2G - cPCI)	✓	✓	✓		✓	✓	✓	✓	✓		✓
JNI FCE6410 (1G - PCI)	✓						✓				✓
Emulex LP9002L (2G - PCI)							✓ ²				✓ ⁷
AIX											
A7539A (Cambex PC2000) (2G - PCI)	✓ ^{5,6}	✓	✓		✓	✓ ⁴	✓				✓
IBM 6228 (2G)	✓ ^{5,6}	✓			✓	✓	✓	✓	✓		✓
IBM 6239 (2G) ⁴	✓ ^{5,6}						✓		✓		✓
Cambex PC1000 (1G)	✓ ^{5,6}		✓				✓		✓		✓

NOTES:

1) Refer to Heterogeneous Open SAN Design Reference Guide for configuration rules and guidelines located at: <http://h18000.www1.hp.com/products/storageworks/san/documentation.html> or consult with your hp solutions provider for assistance

2) Solaris 9 support only
 3) Supported with Solaris 9 and NetBackup 5.0 only.
 4) Supported with AIX 5.2 only.

5) Not supported for robot control.
 6) AIX devices must be manually configured.
 7) Solaris 8 support only.

Fibre Host Bus Adapters

SAN and DAF Support	HP Data Protector	Atempo Time Navigator	BakBone NetVault	CA ARCserve (Win & NW)	CA ARCserve (LINUX & UNIX)	CommVault Galaxy	EMC Legato NetWorker	Syncsort Backup Express	Tivoli Storage Manager	VERITAS Backup Exec	VERITAS NetBackup
Fibre Host Bus Adapters ¹											
Windows - HP Branded											
A7387A (2G)	2000/2003			2000/2003			2000/2003		2000/2003	2000/2003	2000/2003
A7388A (2G)	2000/2003			2000/2003			2000/2003		2000/2003	2000/2003	2000/2003
FCA2355 (2G)	NT/2000/2003	NT/2000/2003	NT/2000/2003	NT/2000/2003		NT/2000/2003	2000/2003	NT/2000/2003	NT/2000/2003	NT/2000/2003	NT/2000/2003
FCA2408 (2G)	2000/2003	2000/2003		2000/2003		2000/2003	2000/2003	2000/2003	2000/2003	2000/2003	2000/2003
ISP2312 (2G - BL20pG2 Blade Server)	2000/2003	2000/2003		2000/2003		2000/2003	2000/2003	2000/2003	2000/2003	2000/2003	2000/2003
FCA2101 (2G)	NT/2000/2003	NT/2000/2003	NT/2000/2003	NT/2000/2003		NT/2000/2003	2000/2003	NT/2000/2003	NT/2000/2003	NT/2000/2003	NT/2000/2003
FCA2404 (2G)	2000/2003	2000/2003	2000/2003	2000/2003		2000/2003	2000/2003		2000/2003	2000/2003	2000/2003
FCA2404DC (2G)	2000/2003	2000/2003	2000/2003	2000/2003		2000/2003	2000/2003		2000/2003	2000/2003	2000/2003
FCA2214 / 2214DC (2G)	2000/2003	2000/2003		2000/2003		2000/2003	2000/2003	2000/2003	2000/2003	2000/2003	2000/2003
64-bit/33MHz PCI to FC (1G) KGPSA-CB	NT/2000/2003	NT/2000/2003	NT/2000/2003	NT/2000/2003		NT/2000/2003	2000/2003	NT/2000/2003	NT/2000/2003	NT/2000/2003	NT/2000/2003
Windows - HP Branded (IA64)											
AB466A (2G)	✓						✓				✓
AB467A (2G)	✓						✓				✓
A7298A (2G)	✓	✓				✓	✓		✓		✓
AB232A (2G)	✓	✓				✓	✓		✓		✓
Windows - 3rd Party											
Emulex LP982 (Full-Port Driver) ⁶	✓										✓
LINUX											
FCA2214 / 2214DC (2G)	✓	✓	✓		✓	✓	✓	✓	✓		✓
ISP2312 (2G - BL20pG2 Blade Server)	✓	✓			✓	✓	✓	✓	✓		✓
QLA2200 (1G)	✓						✓	✓			
LINUX (IA64)											
A6826A	✓	✓	✓				✓				
NetWare											
FCA2214 (FCA2210) (2G) ³	✓ ⁷			✓		✓		✓		✓	
64-bit / 66 MHz PCI to FC HBA (1G) ^{2, 4, 5}	✓ ⁷		✓	✓				✓		✓	
32-bit / 33 MHz HBA (1G) ^{2, 4, 5}	✓ ⁷			✓				✓		✓	

NOTES:

1) Refer to [Heterogeneous Open SAN Design Reference Guide](http://h18000.www1.hp.com/products/storageworks/san/documentation.html) for configuration rules and guidelines located at: <http://h18000.www1.hp.com/products/storageworks/san/documentation.html> or consult with your hp solutions provider for assistance

2) COMPAQ HBAs

3) Supports Enterprise Virtual Array and MSA1000. Supports HSG80 arrays with NetWare 5.1 and 6.0 only.

4) Heterogeneous Windows and NetWare configurations require FCA-2210 HBA for access to shared tape.

5) Not supported with CA ARCserve 9.0 for NetWare

6) Supported for tape connectivity only. Support is limited to full-port driver 2.21a0 and firmware 1.01a2

7) Support is limited to single path configurations only

SCSI Host Bus Adapters

HP Branded 32-bit SCSI Host Bus Adapters ^{2, 3}

Windows	HP-UX	LINUX	Tru64	NetWare
268351-B21 Ultra320, LVD, Dual Channel, VHDCI	A6829A Ultra160, LVD, Dual Channel, VHDCI	268351-B21 Ultra320, LVD, Dual Channel, VHDCI	3X-KZPCA-AA Ultra80, LVD, Dual Channel, HD68	268351-B21 Ultra320, LVD, Dual Channel, VHDCI
284688-B21 Ultra160, LVD, Dual Channel, VHDCI	A6828A Ultra160, LVD, Single Channel, VHDCI	374654-B21 ⁴ Ultra320, LVD, Single Channel, VHDCI		284688-B21 Ultra160, LVD, Dual Channel, VHDCI
C7474A Ultra160, LVD, Single Channel, VHDCI	A5149A Ultra80, LVD, Single Channel, VHDCI	284688-B21 Ultra160, LVD, Dual Channel, VHDCI		129803-B21 Ultra160, LVD, Dual Channel, VHDCI
154457-B21 Ultra160, LVD, Single Channel, HD68	A5150A Ultra80, LVD, Dual Channel, VHDCI	C7474A Ultra160, LVD, Single Channel, VHDCI		154457-B21 Ultra160, LVD, Single Channel, HD68
129803-B21 Ultra160, LVD, Dual Channel, VHDCI	A4974A ¹ Ultra, SE, Single Channel, HD68	154457-B21 Ultra160, LVD, Single Channel, HD68		C7474A Ultra160, LVD, Single Channel, VHDCI
348757-B21 Ultra80, LVD, Dual Channel, VHDCI	A4999A ¹ Ultra80, LVD, Single Channel, VHDCI	129803-B21 Ultra160, LVD, Dual Channel, VHDCI		348757-B21 Ultra80, LVD, Dual Channel, VHDCI
374654-B21 ⁴ Ultra320, LVD, Single Channel, VHDCI	A5838A Ultra80, LVD, Dual Channel, VHDCI			
	A2679A Ultra80, LVD, Single Channel, HD68			

NOTES:

- 1) Supported on HP-UX Workstations only
- 2) Refer to the Server QuickSpecs to determine which SCSI HBAs are supported
- 3) Third party X86 servers supported with HP-Branded adapters only.
- 4) Autoloader support only

SCSI Host Bus Adapters

HP Branded Integrity SCSI Host Bus Adapters, IA-64 64-bit ¹

Windows	HP-UX	LINUX
A7059A Ultra160, LVD, Single Channel, VHDCI	A7173A Ultra320, LVD, Dual Channel, VHDCI	A7059A Ultra160, LVD, Single Channel, VHDCI
A7060A Ultra160, LVD, Dual Channel, VHDCI	A6829A Ultra160, LVD, Dual Channel, VHDCI	A7060A Ultra160, LVD, Dual Channel, VHDCI
	A6828A Ultra160, LVD, Single Channel, VHDCI	
	A5149A Ultra80, LVD, Single Channel, VHDCI	
	A5150A Ultra80, LVD, Dual Channel, VHDCI	
	A5838A Ultra80, LVD, Dual Channel, VHDCI	

NOTES:

1) Refer to the Server QuickSpecs to determine which SCSI HBAs are supported

SCSI Host Bus Adapters

Third Party SCSI HBA and Integrated SCSI Controllers ^{2,3}		
Windows	Linux	NetWare
Adaptec 29320 Ultra320, LVD, Single Channel	Adaptec 29320 Ultra320, LVD, Single Channel	Adaptec 29320 Ultra320, LVD, Single Channel
Adaptec 29160 Ultra160, LVD, Single Channel	Adaptec 29160 Ultra160, LVD, Single Channel	Adaptec 29160 Ultra160, LVD, Single Channel
Adaptec 39160 Ultra160, LVD, Dual Channel	Adaptec 39160 Ultra160, LVD, Dual Channel	Adaptec 39160 Ultra160, LVD, Dual Channel
Symbios/LSI 22915 Ultra160, LVD, Dual Channel		
Symbios/LSI 22903 Ultra160, LVD, Dual Channel		
Symbios/LSI 8951 Ultra80, LVD, Single Channel		
Integrated Smart Array 5i/5i Plus ¹ Ultra160, LVD, Single Channel		
ProLiant Integrated SCSI Ultra160, LVD, Single and Dual Channel		

NOTES:

- 1) Supported only with Enterprise and Mid-Range Libraries, SSL1016 Ultrium 460, 1/8 Ultrium 460, 1/8 SDLT320, and 1/8 Ultrium 230 tape autoloaders
- 2) For Solaris and AIX configurations, EBS supports all SCSI HBA's supported by the server hardware manufacturer.
Refer to the server manufacturer's web site for supported HBA/server platform/operating system combinations.
- 3) Third Party SCSI HBA support is for HP servers only

Storage Software

	HP Data Protector	Atempo Time Navigator	BakBone NetVault	CA ARCserve (Win & NW)	CA ARCserve (LINUX & UNIX)	CommVault Galaxy	EMC Legato NetWorker	Syncsort Backup Express	Tivoli Storage Manager	VERITAS Backup Exec	VERITAS NetBackup
OpenView											
Storage Virtual Replicator				✓			✓		✓	✓	✓
OV-SAM	✓	✓	✓	✓	✓	✓	✓	✓	✓	✓	✓
Zero Downtime with XP	✓										
Instant Recovery with XP	✓										
StorageWorks											
Command View for ESL	✓	✓	✓	✓	✓	✓	✓		✓	✓	✓
Continuous Access				✓			✓		✓	✓	✓
Business Copy EVA	✓	✓		✓		✓	✓		✓	✓	✓
Business Copy XP	✓										
Tools and Utilities											
Smart Start	✓	✓	✓	✓	✓	✓	✓	✓	✓	✓	✓
Insight Manager	✓	✓	✓	✓	✓	✓	✓	✓	✓	✓	✓

Disk Array Multipath

SAN Support	HP Data Protector	Atempo Time Navigator	BakBone NetVault	CA ARCserve (Win & NW)	CA ARCserve (LINUX & UNIX)	CommVault Galaxy	EMC Legato NetWorker	Syncsort Backup Express	Tivoli Storage Manager	VERITAS Backup Exec	VERITAS NetBackup
Disk Array Multipath¹											
AutoPath for HP-UX ¹	✓						✓				✓
Secure Path for HP-UX ¹	✓	✓	✓		✓	✓	✓	✓	✓		✓
Secure Path for Windows ¹	✓	✓	✓	✓	✓	✓	✓	✓	✓	✓	✓
AutoPath for Windows 2000 ¹	✓			✓			✓		✓	✓	✓
AutoPath for Windows 2003 ¹				✓			✓			✓	
Secure Path for Linux	✓	✓	✓				✓				
QLogic Native Multi-Path for Linux ⁴											
Tru64 Multipath		✓	✓		✓	✓	✓	✓			✓
Secure Path for NetWare ^{1,2}	✓			✓		✓		✓		✓	
Secure Path for Solaris ¹	✓	✓	✓		✓	✓	✓	✓	✓		✓
Solaris MpXIO ³											✓
Secure Path for AIX ¹	✓	✓	✓		✓	✓	✓	✓	✓		✓

NOTES:

- 1) Refer to [Heterogeneous Open SAN Design Reference Guide](http://h18000.www1.hp.com/products/storageworks/san/documentation.html) for configuration rules and guidelines located at: <http://h18000.www1.hp.com/products/storageworks/san/documentation.html> or consult with your hp solutions provider for assistance
- 2) MSA1000 and EVA require FCA-2210 HBA with a minimum Secure Path version of 3.0c. HSG80 arrays with FCA-2210 HBA require a minimum Secure Path version of 3.0c SP2.
- 3) Supported with Solaris 9 only.
- 4) QLogic Native Failover driver currently does not support multiple tape LUNs behind a single target.

Firmware & Drivers - Enterprise Libraries

Components & Firmware	Current Release	HP Data Protector	Atempo Time Navigator	BakBone NetVault	CA ARCserve (Win & NW)	CA ARCserve (LINUX & UNIX)	CommVault Galaxy	EMC Legato NetWorker	Syncsort Backup Express	Tivoli Storage Manager	VERITAS Backup Exec	VERITAS NetBackup
Enterprise Libraries												
ESL E-Series 712e/322e												
Robot FW	2.00	2.00	1.01	1.01	2.00	2.00	1.01	2.00		2.00	2.00	2.00
Drive FW Ultrium 460	F59W	F59W	F43W	F43W	F59W	F59W	F43W	F59W		F59W	F59W	F59W
Drive FW Ultrium 460 FC	K42W	K42W			K42W	K42W		K42W		K42W	K42W	K42W
ESL E-Series 630e/286e												
Robot FW	2.00	2.00	1.01	1.01	2.00	2.00	1.01	2.00		2.00	2.00	2.00
Drive FW SDLT 160/320	v82	v82	v75	v75	v82	v82	v75	v82		v82	v82	v82
ESL 9595 (Ultrium 460)												
Robot FW	3.55	3.55	3.48	3.48	3.55	3.55	3.48	3.55	3.48	3.55	3.55	3.55
Drive FW Ultrium 460	F59W	F59W	F43W	F43W	F59W	F59W	F43W	F59W	F43W	F59W	F59W	F59W
ESL 9595 (Ultrium 230)												
Robot FW	3.55	3.55	3.48	3.48	3.55	3.55	3.48	3.55	3.48	3.55	3.55	3.55
Drive FW Ultrium 230	E38W	E38W	E38W	E38W	E38W	E38W	E38W	E38W	E38W	E38W	E38W	E38W
ESL 9595 S2												
Robot FW	3.55	3.55	3.48	3.48	3.55	3.55	3.48	3.55	3.48	3.55	3.55	3.55
Drive FW SDLT 160/320	v82	v82	v75	v75	v82	v82	v75	v82	v75	v82	v82	v82
ESL 9595 SL												
Robot FW	3.55	3.55	3.48	3.48	3.55	3.55	3.48	3.55	3.48	3.55	3.55	3.55
Drive FW SDLT 110/220	v82	v82	v75	v75	v82	v82	v75	v82	v75	v82	v82	v82
ESL 9326 SL												
Robot FW	3.55	3.55	3.48	3.48	3.55	3.55	3.48	3.55	3.48	3.55	3.55	3.55
Drive FW SDLT 110/220	v82	v82	v75	v75	v82	v82	v75	v82	v75	v82	v82	v82
ESL 9326 DX												
Robot FW	3.55	3.55	3.20p5	3.20p5	3.55	3.55	3.48	3.55	3.48	3.55	3.55	3.55
Drive FW 40/80	v88	v88	V80	V80	v88	v88	v86	v88	v80	v88	v88	v88
ESL 9322 (Ultrium 460)												
Robot FW	3.55	3.55	3.48	3.48	3.55	3.55	3.48	3.55	3.48	3.55	3.55	3.55
Drive FW Ultrium 460	F59W	F59W	F43W	F43W	F59W	F59W	F43W	F59W	F43W	F59W	F59W	F59W
ESL 9322 (Ultrium 230)												
Robot FW	3.55	3.55	3.48	3.48	3.55	3.55	3.48	3.55	3.48	3.55	3.55	3.55
Drive FW Ultrium 230	E38W	E38W	E38W	E38W	E38W	E38W	E38W	E38W	E38W	E38W	E38W	E38W
ESL 9322 S2												
Robot FW	3.55	3.55	3.48	3.48	3.55	3.55	3.48	3.55	3.48	3.55	3.55	3.55
Drive FW SDLT 160/320	v82	v82	v75	v75	v82	v82	v75	v82	v75	v82	v82	v82
ESL 9198 SL												
Robot FW	3.55	3.55	3.48	3.48	3.55	3.55	3.48	3.55	3.48	3.55	3.55	3.55
Drive FW SDLT 110/220	v82	v82	v75	v75	v82	v82	v75	v82	v75	v82	v82	v82
ESL 9198 DLX												
Robot FW	3.55	3.55	3.20p5	3.20p5	3.55	3.55	3.48	3.55	3.48	3.55	3.55	3.55
Drive FW 40/80	v88	v88	V80	V80	v88	v88	V80	v88	v80	v88	v88	v88

Firmware & Drivers - Mid-Range Libraries

Components & Firmware	Current Release	HP Data Protector	Atempo Time Navigator	BakBone NetVault	CA ARCserve (Win & NW)	CA ARCserve (LINUX & UNIX)	CommVault Galaxy	EMC Legato NetWorker	Syncsort Backup Express	Tivoli Storage Manager	VERITAS Backup Exec	VERITAS NetBackup
Mid-Range Libraries												
MSL 6060 (Ultrium 460)												
Robot FW	4.30	4.30	4.23	4.23	4.30	4.30	4.23	4.30	4.14	4.30	4.30	4.30
Drive FW Ultrium 460	F59W	F59W	F43W	F43W	F59W	F59W	F43W	F59W	F43W	F59W	F59W	F59W
MSL 5060 L1												
Robot FW	4.30	4.30	4.23	4.23	4.30	4.30	4.23	4.30	4.14	4.30	4.30	4.30
Drive FW Ultrium 230	E38W	E38W	E38W	E38W	E38W	E38W	E38W	E38W	E38W	E38W	E38W	E38W
MSL 5052 S2												
Robot FW	4.30	4.30	4.23	4.23	4.30	4.30	4.23	4.30	4.14	4.30	4.30	4.30
Drive FW SDLT 160/320	v82	v82	v75	v75	v82	v82	v75	v82	v75	v82	v82	v82
MSL 5052 SL												
Robot FW	4.30	4.30	4.23	4.23	4.30	4.30	4.23	4.30	4.14	4.30	4.30	4.30
Drive FW SDLT 110/220	v82	v82	v75	v75	v82	v82	v75	v82	v75	v82	v82	v82
MSL 6030 (Ultrium 460)												
Robot FW	4.30	4.30	4.23	4.23	4.30	4.30	4.23	4.30	4.14	4.30	4.30	4.30
Drive FW Ultrium 460	F59W	F59W	F43W	F43W	F59W	F59W	F43W	F59W	F43W	F59W	F59W	F59W
MSL 5030 L1												
Robot FW	4.30	4.30	4.23	4.23	4.30	4.30	4.23	4.30	4.14	4.30	4.30	4.30
Drive FW Ultrium 230	E38W	E38W	E38W	E38W	E38W	E38W	E38W	E38W	E38W	E38W	E38W	E38W
MSL 5026 S2												
Robot FW	4.30	4.30	4.23	4.23	4.30	4.30	4.23	4.30	4.14	4.30	4.30	4.30
Drive FW SDLT 160/320	v82	v82	v75	v75	v82	v82	v75	v82	v75	v82	v82	v82
MSL 5026 SL												
Robot FW	4.30	4.30	4.23	4.23	4.30	4.30	4.23	4.30	4.14	4.30	4.30	4.30
SDLT 110/220 FW	v82	v82	v75	v75	v82	v82	v75	v82	v75	v82	v82	v82
MSL 5026 DLX												
Robot FW	4.30	4.30	3.11	3.11	4.30	4.30	4.23	4.30	4.14	4.30	4.30	4.30
Drive FW 40/80	v88	v88	V80	V80	v88	v88	V80	v88	v80	v88	v88	v88
SSL 2020 TL												
Robot FW	4.16	4.16	4.15	4.15	4.16	4.16	4.16	4.16	4.16	4.16	4.16	4.16
Drive FW AIT50	1.35	1.35	1.30	1.30	1.35	1.35	1.30	1.35	1.27	1.35	1.35	1.35

Firmware & Drivers - Autoloaders, Tools and Multipath

Components & Firmware	Current Release	HP Data Protector	Atempo Time Navigator	BakBone NetVault	CA ARCserve	CommVault Galaxy	EMC Legato NetWorker	Syncsort Backup Express	Tivoli Storage Manager	VERITAS Backup Exec	VERITAS NetBackup
Autoloaders											
SSL1016 Ultrium 460											
Robot FW	v20	v20	v20	v10	v20	v10	v20	v10	v20	v20	v20
Drive FW Ultrium 460	F59W	F59W	F43W	F43W	F59W	F43W	F59W	F43W	F59W	F59W	F59W
1/8 Ultrium 460											
Robot FW	N12r	N12r	N12r	N12r	N12r	N12r	N12r			N12r	N12r
Drive FW Ultrium 460	F7BP	F7BP	F78V	F78V	F7BP	F78V	F7BP			F7BP	F7BP
1/8 Ultrium 230											
Robot FW	H43r	H43r	H43r	H43r	H43r	H43r	H43r	H33r	H43r	H43r	H43r
Drive FW Ultrium 230	E33P	E330P	E33P	E33P	E33P	E33P	E33P	E00P	E33P	E33P	E33P
1/8 DLT vs80											
Robot FW	5E40	5E40	5E40	5E40	5E40	5E40	5E40	5E40		5E40	
Drive FW vs80	v64	v64	v56	v56	v64	v56	v64	v56		v64	
1/8 SDLT160/320											
Robot FW	L12r	L12r	L12r	L12r	L12r	L12r	L12r			L12r	L12r
Drive FW SDLT 160/320	v82	v82	v75	v75	v82	v75	v82			v82	v82
SSL1016 SDLT160/320											
Robot FW	v40	v40		v35	v40	v31	v40	v31		v40	v40
Drive FW SDLT 160/320	v82	v82		v75	v82	v75	v82	v75		v82	v82
SSL1016 DLT1											
Robot FW	v40	v40	v31	v31	v40	v13	v40	v31	v40	v40	v40
Drive FW DLT 1	v64	v64	v53	v53	v64	v46	v64	v53	v64	v64	v64
Tools and Utilities											
Smart Start	7.10	7.10	7.00	7.00	7.10	7.00	7.10	6.40	7.10	7.10	7.10
Insight Manager	7.10	7.10	7.00	7.00	7.10	7.00	7.10	6.40	7.10	7.10	7.10
Disk Array Multipath Support											
AutoPath for HP-UX	2.01.02	2.01.02					2.01.02				2.01.02
Secure Path for HP-UX	3.0C	3.0C	3.0C	3.0C	3.0C	3.0C	3.0C	3.0B	3.0C		3.0C
Secure Path for Windows	4.0C SP1	4.0C SP1	4.0C	4.0C	4.0C SP1	4.0C	4.0C SP1	4.0B	4.0C SP1	4.0C SP1	4.0C SP1
AutoPath for Windows 2000	2.01	2.01			2.01		2.01		2.01	2.01	2.01
AutoPath for Windows 2003	1.00				1.00		1.00			1.00	
Secure Path for Linux	3.0C	3.0C	3.0A	3.0A			3.0C				
QLogic Native Multi-Path for Linux											
Tru64 Multipath	Native		Native	Native	Native	Native	Native	Native			Native
Secure Path for NetWare	3.0C SP2				3.0C SP2	3.0C SP2		3.0C SP1		3.0C SP2	
Secure Path for Solaris	3.0D	3.0D	3.0C SP1	3.0C	3.0D	3.0C	3.0D	3.0B SP1	3.0D		3.0D
Secure Path for AIX	2.0D SP2	2.0D SP2	2.0D SP2	2.0D SP2	2.0D SP2	2.0D SP2	2.0D SP2	2.0D SP2	2.0D SP2		2.0D SP2

Firmware & Drivers - Controllers

Components & Firmware	Current Release	HP Data Protector	Atempo Time Navigator	BakBone NetVault	CA ARCserve (Win & NW)	CA ARCserve (LINUX & UNIX)	CommVault Galaxy	EMC Legato NetWorker	Syncsort Backup Express	Tivoli Storage Manager	VERITAS Backup Exec	VERITAS NetBackup
Fibre Channel Interface Controllers												
Interface Manager	i141	i141	i130	i120	i141	i141	i120	i141		i141	i141	i141
e2400-FC 2G Interface Controller (FC-FC)	5.6.06	5.6.06						5.6.06		5.6.06		5.6.06
e2400-160 Interface Controller (FC-SCSI)	5.6.06	5.6.06	5.4.25	5.3.0b	5.6.06	5.6.06	5.3.0b	5.6.06	5.3.0b	5.6.06	5.6.06	5.6.06
NSR M2402	5.6.06	5.6.06	5.4.25	5.3.0b	5.6.06	5.6.06	5.3.0b	5.6.06	5.3.0b	5.6.06	5.6.06	5.6.06
NSR N1200	5.6.06	5.6.06	5.4.25	5.3.0b	5.6.06	5.6.06	5.3.0b	5.6.06	5.3.0b	5.6.06	5.6.06	5.6.06
NSR E2400	5.6.06	5.6.06	5.4.25	5.3.0b	5.6.06	5.6.06	5.3.0b	5.6.06	5.3.0b	5.6.06	5.6.06	5.6.06
NSR E1200-160	5.6.06	5.6.06	5.4.25	5.3.0b	5.6.06	5.6.06	5.3.0b	5.6.06	5.3.0b	5.6.06	5.6.06	5.6.06
NSR E1200	5.6.06	5.6.06	5.4.25	5.3.0b	5.6.06	5.6.06	5.3.0b	5.6.06	5.3.0b	5.6.06	5.6.06	5.6.06

Required Minimum Components Interface Manager Firmware

	I100	I110	I120	I130	I141
e2400-FC 2G Interface Controller (FC-FC)	N/A	N/A	N/A	5.4.25	5.6.06
e2400-160 Interface Controller (FC-SCSI)	5.1.08	5.3.0b	5.3.0b	5.4.25	5.6.06
NSR E2400	N/A	5.3.0b	5.3.0b	5.4.25	5.6.06
NSR E1200-160	N/A	5.3.0b	5.3.0b	5.4.25	5.6.06
ESL 9595/9322	3.40	3.40	3.40	3.48	3.48
ESL 9198/9326	N/A	3.40	3.40	3.48	3.48
ESLE 712e/630e	N/A	N/A	1.01	1.10	2.00
ESLE 322e/286e	N/A	N/A	N/A	1.10	2.00
JAVA Run Time	1.4.0	1.4.0	1.4.2	1.4.2	1.4.2
Command View ESL	1.0.00	1.1.00	1.2.00	1.3.00	1.4.01

Firmware & Drivers - Interconnects and OpenView Storage Software

Components & Firmware	Current Release	HP Data Protector	Atempo Time Navigator	BakBone NetVault	CA ARCserve (Win & NW)	CA ARCserve (LINUX & UNIX)	CommVault Galaxy	EMC Legato NetWorker	Syncsort Backup Express	Tivoli Storage Manager	VERITAS Backup Exec	VERITAS NetBackup
Interconnects												
Director Switch 2/140	06.02.00-22	06.02.00-22	06.02.00-22	06.02.00-22	06.02.00-22	06.02.00-22	06.02.00-22	06.02.00-22	06.02.00-22	06.02.00-22	06.02.00-22	06.02.00-22
Director Switch 2/64	06.02.00-22	06.02.00-22	06.02.00-22	06.02.00-22	06.02.00-22	06.02.00-22	06.02.00-22	06.02.00-22	06.02.00-22	06.02.00-22	06.02.00-22	06.02.00-22
Edge Switch 2/32	06.02.00-22	06.02.00-22	06.02.00-22	06.02.00-22	06.02.00-22	06.02.00-22	06.02.00-22	06.02.00-22	06.02.00-22	06.02.00-22	06.02.00-22	06.02.00-22
Edge Switch 2/24	06.02.00-22	06.02.00-22	06.02.00-22	06.02.00-22	06.02.00-22	06.02.00-22	06.02.00-22	06.02.00-22	06.02.00-22	06.02.00-22	06.02.00-22	06.02.00-22
Edge Switch 2/16	06.02.00-22	06.02.00-22	06.02.00-22	06.02.00-22	06.02.00-22	06.02.00-22	06.02.00-22	06.02.00-22	06.02.00-22	06.02.00-22	06.02.00-22	06.02.00-22
Edge Switch 2/12	06.02.00-22	06.02.00-22	06.02.00-22	06.02.00-22	06.02.00-22	06.02.00-22	06.02.00-22	06.02.00-22	06.02.00-22	06.02.00-22	06.02.00-22	06.02.00-22
SAN Director 2/128	4.2.2a	4.2.2a	4.2.2a	4.2.2a	4.2.2a	4.2.2a	4.2.2a	4.2.2a	4.2.2a	4.2.2a	4.2.2a	4.2.2a
Core Switch 2/64	4.2.2a	4.2.2a	4.2.2a	4.2.2a	4.2.2a	4.2.2a	4.2.2a	4.2.2a	4.2.2a	4.2.2a	4.2.2a	4.2.2a
SAN Switch 2/32	4.2.2a	4.2.2a	4.2.2a	4.2.2a	4.2.2a	4.2.2a	4.2.2a	4.2.2a	4.2.2a	4.2.2a	4.2.2a	4.2.2a
SAN Switch 2/16N	4.2.2a	4.2.2a	4.2.2a	4.2.2a	4.2.2a	4.2.2a	4.2.2a	4.2.2a	4.2.2a	4.2.2a	4.2.2a	4.2.2a
SAN Switch 2/16V	4.2.2a	4.2.2a	4.2.2a	4.2.2a	4.2.2a	4.2.2a	4.2.2a	4.2.2a	4.2.2a	4.2.2a	4.2.2a	4.2.2a
SAN Switch 2/16	3.1.3a	3.1.3a	3.1.3a	3.1.3a	3.1.3a	3.1.3a	3.1.3a	3.1.3a	3.1.3a	3.1.3a	3.1.3a	3.1.3a
SAN Switch 2/8V	4.2.2a	4.2.2a	4.2.2a	4.2.2a	4.2.2a	4.2.2a	4.2.2a	4.2.2a	4.2.2a	4.2.2a	4.2.2a	4.2.2a
SAN Switch 2/8	3.1.3a	3.1.3a	3.1.3a	3.1.3a	3.1.3a	3.1.3a	3.1.3a	3.1.3a	3.1.3a	3.1.3a	3.1.3a	3.1.3a
SAN Switch 2/16-EL	3.1.3a	3.1.3a	3.1.3a	3.1.3a	3.1.3a	3.1.3a	3.1.3a	3.1.3a	3.1.3a	3.1.3a	3.1.3a	3.1.3a
SAN Switch 2/8-EL	3.1.3a	3.1.3a	3.1.3a	3.1.3a	3.1.3a	3.1.3a	3.1.3a	3.1.3a	3.1.3a	3.1.3a	3.1.3a	3.1.3a
SAN Switch 16	2.6.2b	2.6.2b	2.6.2b	2.6.2b	2.6.2b	2.6.2b	2.6.2b	2.6.2b	2.6.2b	2.6.2b	2.6.2b	2.6.2b
SAN Switch 8	2.6.2b	2.6.2b	2.6.2b	2.6.2b	2.6.2b	2.6.2b	2.6.2b	2.6.2b	2.6.2b	2.6.2b	2.6.2b	2.6.2b
SAN Switch 16EL	2.6.2b	2.6.2b	2.6.2b	2.6.2b	2.6.2b	2.6.2b	2.6.2b	2.6.2b	2.6.2b	2.6.2b	2.6.2b	2.6.2b
SAN Switch 8EL	2.6.2b	2.6.2b	2.6.2b	2.6.2b	2.6.2b	2.6.2b	2.6.2b	2.6.2b	2.6.2b	2.6.2b	2.6.2b	2.6.2b
FC Switch 16B	3.1.3a	3.1.3a	3.1.3a	3.1.3a	3.1.3a	3.1.3a	3.1.3a	3.1.3a	3.1.3a	3.1.3a	3.1.3a	3.1.3a
FC Switch 8B	3.1.3a	3.1.3a	3.1.3a	3.1.3a	3.1.3a	3.1.3a	3.1.3a	3.1.3a	3.1.3a	3.1.3a	3.1.3a	3.1.3a
MSA SAN Switch 2/8	3.1.3a	3.1.3a	3.1.3a	3.1.3a	3.1.3a	3.1.3a	3.1.3a	3.1.3a	3.1.3a	3.1.3a	3.1.3a	3.1.3a
Cisco MDS 9506	2.0.1b	2.0.1b	2.0.1b	2.0.1b	2.0.1b	2.0.1b	2.0.1b	2.0.1b	2.0.1b	2.0.1b	2.0.1b	2.0.1b
Cisco MDS 9509	2.0.1b	2.0.1b	2.0.1b	2.0.1b	2.0.1b	2.0.1b	2.0.1b	2.0.1b	2.0.1b	2.0.1b	2.0.1b	2.0.1b
Cisco MDS 9216	2.0.1b	2.0.1b	2.0.1b	2.0.1b	2.0.1b	2.0.1b	2.0.1b	2.0.1b	2.0.1b	2.0.1b	2.0.1b	2.0.1b
Cisco MDS 9120	2.0.1b	2.0.1b	2.0.1b	2.0.1b	2.0.1b	2.0.1b	2.0.1b	2.0.1b	2.0.1b	2.0.1b	2.0.1b	2.0.1b
Cisco MDS 9140	2.0.1b	2.0.1b	2.0.1b	2.0.1b	2.0.1b	2.0.1b	2.0.1b	2.0.1b	2.0.1b	2.0.1b	2.0.1b	2.0.1b
Cisco MDS 9216a	2.0.1b	2.0.1b	2.0.1b	2.0.1b	2.0.1b	2.0.1b	2.0.1b	2.0.1b	2.0.1b	2.0.1b	2.0.1b	2.0.1b
Cisco MDS 9216i	2.0.1b	2.0.1b	2.0.1b	2.0.1b	2.0.1b	2.0.1b	2.0.1b	2.0.1b	2.0.1b	2.0.1b	2.0.1b	2.0.1b
Multi-Protocol Routers and Gateways												
Multi-Protocol Router	7.1.2c	7.1.2c			7.1.2c	7.1.2c		7.1.2c		7.1.2c	7.1.2c	7.1.2c
IP Storage Router 2122-2	3.4.5	3.4.5			3.4.5	3.4.5		3.4.5		3.4.5	3.4.5	3.4.5
HP OpenView Storage Software												
Storage Virtual Replicator	3.0b sp1				3.0b sp1			3.0b sp1		3.0b sp1	3.0b sp1	3.0b sp1
OV-SAM	3.1	3.1			3.1	3.0.2	3.1	3.1		3.1	3.1	3.1

Firmware & Drivers - Fibre HBAs

Components & Firmware	Current Release	HP Data Protector	Atempo Time Navigator	BakBone NetVault	CA ARCserve (Win & NW)	CA ARCserve (LINUX & UNIX)	CommVault Galaxy	EMC Legato NetWorker	Syncsort Backup Express	Tivoli Storage Manager	VERITAS Backup Exec	VERITAS NetBackup
Fibre Host Bus Adapters												
Windows - HP Branded												
A7387A (2G)												
FW	1.81a3	1.81a3			1.81a3			1.81a3		1.81a3	1.81a3	1.81a3
WIN 2000/2003 SCSI port Driver	5-5.10a10	5-5.10a10			5-5.10a10			5-5.10a10		5-5.10a10	5-5.10a10	5-5.10a10
WIN 2003 StorPort Driver ^{1,2}	5-1.02a5	5-1.02a5			5-1.02a5			5-1.02a5			5-1.02a5	5-1.02a5
A7388A (2G)												
FW	1.81a3	1.81a3			1.81a3			1.81a3		1.81a3	1.81a3	1.81a3
WIN 2000/2003 SCSI port Driver	5-5.10a10	5-5.10a10			5-5.10a10			5-5.10a10		5-5.10a10	5-5.10a10	5-5.10a10
WIN 2003 StorPort Driver ^{1,2}	5-1.02a5	5-1.02a5			5-1.02a5			5-1.02a5			5-1.02a5	5-1.02a5
FCA2355 (2G)												
FW	3.92a2	3.92a2	3.92a2	3.92a2	3.92a2		3.92a2	3.92a2	3.91a1	3.92a2	3.92a2	3.92a2
WIN NT 4.0 Driver	4-4.82a16	4-4.82a16	4-4.82a16	4-4.82a16	4-4.82a16		4-4.82a16	4-4.82a16	4-4.82a16	4-4.82a16	4-4.82a16	4-4.82a16
WIN 2000/2003 SCSI port Driver	5-5.10a10	5-5.10a10	5-5.10a9	5-5.10a9	5-5.10a10		5-5.10a9	5-5.10a10	5-4.82a16	5-5.10a10	5-5.10a10	5-5.10a10
WIN 2003 StorPort Driver ^{1,2}	5-1.02a5	5-1.02a5			5-1.02a5			5-1.02a5			5-1.02a5	5-1.02a5
FCA2408 (2G)												
FW	1.81a2	1.81a2	1.81a2	1.81a2	1.81a2		1.81a2	1.81a2	1.01a2	1.81a2	1.81a2	1.81a2
WIN 2000/2003 SCSI port Driver	5-5.10a10	5-5.10a10	5-5.10a9	5-5.10a9	5-5.10a10		5-5.10a9	5-5.10a10	5-4.82a16	5-5.10a10	5-5.10a10	5-5.10a10
WIN 2003 StorPort Driver ^{1,2}	5-1.02a5	5-1.02a5			5-1.02a5			5-1.02a5			5-1.02a5	5-1.02a5
ISP2312 (2G - BL20pG2 Blade Server)												
FW	1.34	1.34	1.34		1.34		1.34	1.34	1.33	1.34	1.34	1.34
WIN 2000/2003 SCSI port Driver	9.0.0.13	9.0.0.13	9.0.0.13		9.0.0.13		9.0.0.13	9.0.0.13	8.2.0.72	9.0.0.13	9.0.0.13	9.0.0.13
WIN 2003 StorPort Driver ^{1,2}												
FCA2101 (2G)												
FW	3.92a2	3.92a2	3.92a2	3.92a2	3.92a2		3.92a2	3.92a2	3.91a1	3.92a2	3.92a2	3.92a2
WIN NT 4.0 Driver	4-4.82a16	4-4.82a16	4-4.82a16	4-4.82a16	4-4.82a16		4-4.82a16	4-4.82a16	4-4.82a16	4-4.82a16	4-4.82a16	4-4.82a16
WIN 2000/2003 SCSI port Driver	5-5.10a10	5-5.10a10	5-5.10a9	5-5.10a9	5-5.10a10		5-5.10a9	5-5.10a10	5-4.82a16	5-5.10a10	5-5.10a10	5-5.10a10
WIN 2003 StorPort Driver ^{1,2}	5-1.02a5	5-1.02a5			5-1.02a5			5-1.02a5			5-1.02a5	5-1.02a5
FCA2404 (2G)												
FW	1.81a2	1.81a2	1.81a2	1.81a2	1.81a2		1.81a2	1.81a2		1.81a2	1.81a2	1.81a2
WIN 2000/2003 SCSI port Driver	5-5.10a10	5-5.10a10	5-5.10a9	5-5.10a9	5-5.10a10		5-5.10a9	5-5.10a10		5-5.10a10	5-5.10a10	5-5.10a10
WIN 2003 StorPort Driver ^{1,2}	5-1.02a5	5-1.02a5			5-1.02a5			5-1.02a5			5-1.02a5	5-1.02a5
FCA2404DC (2G)												
FW	1.81a2	1.81a2	1.81a2	1.81a2	1.81a2		1.81a2	1.81a2		1.81a2	1.81a2	1.81a2
WIN 2000/2003 SCSI port Driver	5-5.10a10	5-5.10a10	5-5.10a9	5-5.10a9	5-5.10a10		5-5.10a9	5-5.10a10		5-5.10a10	5-5.10a10	5-5.10a10
WIN 2003 StorPort Driver ^{1,2}	5-1.02a5	5-1.02a5			5-1.02a5			5-1.02a5			5-1.02a5	5-1.02a5
FCA2214 / 2214DC (2G)												
FW	1.34	1.34	1.34		1.34		1.34	1.34	1.33	1.34	1.34	1.34
WIN 2000/2003 SCSI port Driver	9.0.0.13	9.0.0.13	9.0.0.13		9.0.0.13		9.0.0.13	9.0.0.13	8.2.0.72	9.0.0.13	9.0.0.13	9.0.0.13
WIN 2003 StorPort Driver ^{1,2}												
64-bit/33MHz PCI to FC (1G) KGPSA-CB												
FW	3.92a2	3.92a2	3.92a2	3.92a2	3.92a2		3.92a2	3.92a2	3.91a1	3.92a2	3.92a2	3.92a2
WIN NT 4.0 Driver	4-4.82a16	4-4.82a16	4-4.82a16	4-4.82a16	4-4.82a16		4-4.82a16	4-4.82a16	4-4.82a16	4-4.82a16	4-4.82a16	4-4.82a16
WIN 2000/2003 SCSI port Driver	5-5.10a10	5-5.10a10	5-5.10a9	5-5.10a9	5-5.10a10		5-5.10a9	5-5.10a10	5-4.82a16	5-5.10a10	5-5.10a10	5-5.10a10
WIN 2003 StorPort Driver ^{1,2}	5-1.02a5	5-1.02a5			5-1.02a5			5-1.02a5			5-1.02a5	5-1.02a5

NOTE:

1) Requires updated StorPort.sys QFE837413 or later.

2) Please reference ISV application installation/support documents for specific driver and patch requirements.

Firmware & Drivers - Fibre HBAs

Components & Firmware	Current Release	HP Data Protector	Atempo Time Navigator	BakBone NetVault	CA ARCserve (Win & NW)	CA ARCserve (LINUX & UNIX)	CommVault Galaxy	EMC Legato NetWorker	Syncsort Backup Express	Tivoli Storage Manager	VERITAS Backup Exec	VERITAS NetBackup
Fibre Host Bus Adapters												
Windows - HP Branded (IA64)												
AB466A (2G)												
FW	1.81a3	1.81a3						1.81a3				1.81a3
WIN 2003 SCSIport Driver	6-5.10a10	6-5.10a10						6-5.10a10				6-5.10a10
AB467A (2G)												
FW	1.81a3	1.81a3						1.81a3				1.81a3
WIN 2003 SCSIport Driver	6-5.10a10	6-5.10a10						6-5.10a10				6-5.10a10
A7298A (2G)												
FW	1.81a2	1.81a2	1.81a2				1.81a2	1.81a2		1.81a2		1.81a2
WIN 2003 SCSIport Driver	6-5.10a10	6-5.10a10	6-5.10a9				6-5.10a9	6-5.10a10		6-5.10a10		6-5.10a10
AB232A (2G)												
FW	1.81a2	1.81a2	1.81a2				1.81a2	1.81a2		1.81a2		1.81a2
WIN 2003 SCSIport Driver	6-5.10a10	6-5.10a10	6-5.10a9				6-5.10a9	6-5.10a10		6-5.10a10		6-5.10a10
Windows - 3rd Party												
Emulex LP982 (Full-Port Driver)												
FW	1.01a2	1.01a2										1.01a2
WIN 2000/2003 Full-Port Driver	2.21a0	2.21a0										2.21a0
LINUX												
FCA2214 / 2214DC (2G)												
FW	1.45	1.45	1.34	1.34		1.45	1.34	1.45	1.29	1.45		1.45
Linux Driver (Intel)	7.01.01	7.01.01	7.00.03	7.00.03		7.01.01	6.06.50	7.01.01	6.06.50	7.01.01		7.01.01
ISP2312 (2G - BL20pG2 Blade Server)												
FW	1.45	1.45	1.34			1.45	1.34	1.45	1.29	1.45		1.45
Linux Driver (Intel)	7.01.01	7.01.01	7.00.03			7.01.01	6.06.50	7.01.01	6.06.50	7.01.01		7.01.01
QLA2200 (1G)												
FW	1.76	1.76						1.76	1.76			
Linux Driver (Intel)	6.0.1c	6.0.1c						6.0.1c	6.0.1			
LINUX (IA64)												
A6826A (2G)												
EFI	1.30	1.30	1.30	1.30				1.30				
RedHat Advanced Server 2.1 Driver	7.01.01	7.01.01	7.00.03	7.00.03				7.01.01				
Red Hat Enterprise Linux 3.0 Driver	7.01.01		7.00.03	7.00.03				7.01.01				
SuSE SLES 8/United Linux Driver	7.01.01	7.01.01	7.00.03	7.00.03				7.01.01				
NetWare												
FCA2214 (FCA2210) (2G)												
FW	1.45	1.45			1.45		1.34		1.34		1.45	
NetWare Driver	6.51b	6.50y			6.51b		6.51b		6.50y		6.51b	
64 Bit / 66 MHz PCI to FC HBA (1G)												
NetWare Driver	2.52	2.52		2.52	2.52				2.52		2.52	
32-bit / 33 MHz HBA (1G)												
NetWare Driver	2.52	2.52			2.52				2.52		2.52	
OpenVMS												
FCA2384 (2G - PCI-X)												
FW	3.91a1	3.91a1										
Driver	Native	Native										

Firmware & Drivers - Fibre HBAs

Components & Firmware	Current Release	HP Data Protector	Atempo Time Navigator	BakBone NetVault	CA ARCserve (Win & NW)	CA ARCserve (LINUX & UNIX)	CommVault Galaxy	EMC Legato NetWorker	Syncsort Backup Express	Tivoli Storage Manager	VERITAS Backup Exec	VERITAS NetBackup
Fibre Host Bus Adapters												
HP-UX (IA-64)¹												
A9782 (2G Combo Card)												
FW												
fcd Driver	Native	Native	Native	Native				Native				
A9784 (2G Combo Card)												
FW												
fcd Driver	Native	Native	Native	Native				Native				
A6795A (2G)												
FW	1.10	1.10						1.10				
td Driver	Native	Native						Native				
A6826A (2G)												
FW	3.02.165	3.02.165	3.02.165	3.02.165				3.02.165				
fcd Driver	Native	Native	Native	Native				Native				
HP-UX (PA-RISC)¹												
A9782 (2G Combo Card)												
FW												
fcd Driver	Native	Native						Native		Native		Native
A9784 (2G Combo Card)												
FW												
fcd Driver	Native	Native						Native		Native		Native
A6826A (2G)												
fcd Driver	Native	Native						Native		Native		Native
FW	3.02.165	3.02.165						3.02.165		3.02.165		3.02.165
A6795A (2G)												
td Driver	Native	Native	Native	Native		Native	Native	Native	Native	Native		Native
A6684A (1G)												
td Driver	Native	Native						Native				Native
A6685A (1G)												
td Driver	Native	Native						Native				Native
A5158A (1G)												
td Driver	Native	Native	Native	Native		Native	Native	Native	Native	Native		Native
Tru64²												
FCA2684 and FCA2684 DC (2G - PCI-X)												
FW	1.81a5	1.81a5	1.81a5					1.81a5				1.81a5
Tru64 Driver	2.14	2.14	2.14					2.14				2.14
FCA2354 (2G)												
FW	3.91a1	3.91a1	3.91a1	3.91a1		3.91a1	3.91a1	3.91a1	3.91a1			3.91a1
Tru64 Driver	2.14	2.14	2.14	2.10		2.10	2.10	2.14	2.10			2.14
FCA2384 (2G - PCI-X)												
FW	1.00x8	1.00x8						1.00x8				1.00x8
Tru64 Driver	2.14	2.14						2.14				2.14
KGPSA -CA (1G)												
FW	3.91a1	3.91a1	3.91a1	3.81a4		3.91a1	3.81a4	3.91a1	3.91a1			3.91a1
Tru64 Driver	2.14	2.14	2.14	1.32a		2.10	1.32a	2.14	2.10			2.14

NOTES:

1) Supported drivers are included in HWE patch kits for HP-UX. Please refer to the Operating System Details page for latest supported HWE kits.

2) Driver is included in Early Release Patch (ERP) kits for Tru64, problem description number BU040324_EW01.

Firmware & Drivers - Fibre HBAs

Components & Firmware	Current Release	HP Data Protector	Atempo Time Navigator	BakBone NetVault	CA ARCserve (Win & NW)	CA ARCserve (LINUX & UNIX)	CommVault Galaxy	EMC Legato NetWorker	Syncsort Backup Express	Tivoli Storage Manager	VERITAS Backup Exec	VERITAS NetBackup
Fibre Host Bus Adapters												
Solaris												
FCA2257P (2G - PCI)												
Fcode	2.00.05	2.00.05				2.00.05	2.00.05	2.00.05	2.00.05	2.00.05		2.00.05
Solaris Driver	4.11	4.11				3.26	4.11	4.11	3.26	4.11		4.11
FCA2257C (1G - PCI)												
Fcode	2.00.05	2.00.05				2.00.05	2.00.05	2.00.05	2.00.05	2.00.05		2.00.05
Solaris Driver	4.11	4.11				3.26	4.11	4.11	3.26	4.11		4.11
FCA2257S (1G - Sbus)												
Fcode	1.18.3	1.18.3				1.18.3	1.18.3	1.18.3	1.18.3	1.18.3		1.18.3
Solaris Driver	4.11	4.11				3.26	4.11	4.11	3.26	4.11		4.11
SWSA4-SC 64-bit Sbus												
Fcode	13.3.7	13.3.7	13.3.7	13.3.7		13.3.7	13.3.7	13.3.7	13.3.7	13.3.7		13.3.7
Solaris Driver	2.5.9	2.5.9	2.5.9	2.5.9		2.5.9	2.5.9	2.5.9	2.5.9	2.5.9		2.5.9
SWSA4-PC 32-bit PCI												
Fcode	3.0.3							3.0.3		3.0.3		3.0.3
Solaris Driver	2.5.9							2.5.9		2.5.9		2.5.9
SG-XPCI2FC-QF2 (X6768A) (2G - PCI-X)												
Solaris Driver	Native	Native	Native	Native			Native	Native				Native
SG-XPCI1FC-QF2 (X6767A) (2G - PCI-X)												
Solaris Driver	Native	Native	Native	Native			Native	Native				Native
SG-XPCI1FC-JF2 (2G-PCI-X)												
Solaris Driver	Native	Native						Native				Native
SG-XPCI2FC-JF2 (2G-PCI-X)												
Solaris Driver	Native	Native						Native				Native
FCX-6562 (2G - PCI)												
Fcode	3.9							3.9				3.9
Solaris Driver	5.3.1							5.3.1				5.3.1
FCX2-6562 (2G - PCI)												
Fcode	3.9							3.9				3.9
Solaris Driver	5.3.1							5.3.1				5.3.1
JNI FCE6460 (2G - PCI)												
Fcode	3.9	3.9	3.9	3.9		3.9	3.9	3.9	3.8.9	3.9		3.9
Solaris Driver	5.3.1	5.3.1	5.3	5.3		5.3.1	5.3	5.3.1	5.2.1	5.3.1		5.3.1
JNI FCC6460 (2G - cPCI)												
Fcode	3.9	3.9	3.9	3.9		3.9	3.9	3.9	3.8.9	3.9		3.9
Solaris Driver	5.3.1	5.3.1	5.3	5.3		5.3.1	5.3	5.3.1	5.2.1	5.3.1		5.3.1
JNI FCE6410 (1G - PCI)												
Fcode	3.9	3.9						3.9				3.9
Solaris Driver	4.1.5	4.1.5						4.1.5				4.1.5
Emulex LP9002L (2G - PCI)												
FW	3.92a2							3.92a2				3.92a2
Solaris Driver	5.01E							5.01E				5.01E

Firmware & Drivers - Fibre HBAs

Components & Firmware	Current Release	HP Data Protector	Atempo Time Navigator	BakBone NetVault	CA ARCserve (Win & NW)	CA ARCserve (LINUX & UNIX)	CommVault Galaxy	EMC Legato NetWorker	Syncsort Backup Express	Tivoli Storage Manager	VERITAS Backup Exec	VERITAS NetBackup
Fibre Host Bus Adapters												
AIX												
A7539A (Cambex PC2000) (2G - PCI)												
AIX Driver w/o Secure Path	1.5.26.0	1.5.26.0	1.5.26.0	1.5.22.0		1.5.26.0	1.5.22.0	1.5.26.0				1.5.26.0
AIX Driver w/ Secure Path	1.5.25.3	1.5.25.3	1.5.25.3	1.5.25.3		1.5.25.3	1.5.25.3	1.5.25.3				1.5.25.3
IBM 6228 (2Gb)												
AIX Driver	Native	Native	Native			Native	Native	Native	Native	Native		Native
IBM 6239 (2Gb)												
AIX Driver	Native	Native						Native		Native		Native
Cambex PC1000 (1G)												
AIX Driver w/o Secure Path	1.5.26.0	1.5.19		1.5.11.1			1.5.22.0	1.5.26.0	1.5.22.0	1.5.26.0		1.5.26.0
AIX Driver w/ Secure Path	1.5.25.3	1.5.25.3					1.5.25.3	1.5.25.3	1.5.25.3	1.5.25.3		1.5.25.3

Backup Application Details

Name	Version	Date Last Tested	Recommended Tape Driver	Application Information/Support
HP OpenView Storage Data Protector	5.5, 5.1.1, 5.1, and 5.0	Current	Use Native Drivers	Data Protector Product Information Data Protector Device Support Matrix
Atempo Time Navigator	3.7.0.3	May-04		www.atempo.com
BakBone NetVault	7.1 & 7.3	Mar-04		www.bakbone.com
Computer Associates BrightStor ARCserve (Windows)	11.1, 11.0, and 9.0	Current	CABA Driver for Windows	support.ca.com
Computer Associates BrightStor ARCserve (NetWare)	11.1 and 9.0	Current	HP Driver for Netware	support.ca.com
Computer Associates BrightStor ARCserve (Linux)	11.1 and 9.0	Current		support.ca.com/
Computer Associates BrightStor ARCserve (UNIX)	11.1 and BEB 10.5	Oct-04		support.ca.com/
CommVault Systems QiNetix Galaxy	5.0	Jan-04	HP Driver for Windows	www.commvault.com
EMC Legato NetWorker	7.1.2, 7.1, 7.0, and 6.1.4	Current	HP Driver for Windows	www.legato.com
Syncsort Backup Express	2.1.5D	Oct-03	Use Native Drivers	www.syncsort.com
Tivoli Storage Manager	5.2.3.x	Current	Tivoli Driver for Windows	www.tivoli.com
VERITAS Backup Exec for Windows Servers	10.0.5484	Current	BE Driver for Windows	www.veritas.com
VERITAS Backup Exec for NetWare	9.1.1152	Current	BE Driver for Netware	www.veritas.com
VERITAS NetBackup Windows	5.1 MP1, 5.0 MP2, and 4.5 FP8/MP8	Current	HP Driver for Windows or NBU Tape Driver for Windows	www.veritas.com
VERITAS NetBackup UNIX	5.1 MP1, 5.0 MP2, and 4.5 FP8/MP8	Current		www.veritas.com

NOTE: All ISV certifications have been completed with a minimum configuration of 16 servers by 16 drives.
This does not imply any limitations of the backup and restore application or HP StorageWorks SAN products.
Refer to the application vendor's website or representative for maximum configuration details.

Legacy Device Support

Device Name	Last EBS Compatibility Matrix Where Device Was Listed ¹
TL895	December 2002
TL891DLX	December 2002
ESL9326D	April 2002
TL891D	April 2002
DLT 35/70	April 2002
Modular Data Router (MDR)	February 2004

1) EBS Compatibility Matrices from the last year can be found on <http://www.hp.com/go/ebs>. For matrices older than one year, consult your HP Account Representative.

Useful Links

Product Family	URL
EBS	http://www.hp.com/go/ebs
EBS Design Guide	http://h200001.www2.hp.com/bc/docs/support/SupportManual/c00190922/c00190922.pdf
EBS 1-2-3	http://h18000.www1.hp.com/products/storageworks/ebs/ebs123.html
Tape Systems	http://www.hp.com/go/tape
Interconnects	http://h18006.www1.hp.com/storage/saninfrastructure.html
RAID Arrays	http://h18006.www1.hp.com/storage/arrayssystems.html
OpenView Storage	http://h18006.www1.hp.com/storage/software.html
Data Protector	http://www.hp.com/go/dataprotector
Storage Media	http://h18006.www1.hp.com/storage/storagemedia.html
Firmware & Driver Downloads	http://welcome.hp.com/country/us/en/support.html
Windows OS/ProLiant Server Support Matrix	http://h10018.www1.hp.com/wwsolutions/windows/index-all.html
Linux OS/ProLiant Server Support Matrix	http://h18004.www1.hp.com/products/servers/linux/hpLinuxcert.html
NetWare OS/ProLiant Server Support Matrix	http://h10018.www1.hp.com/wwsolutions/novell/index-all.html
IT Resource Center Website	http://itrc.hp.com

Current EBS Configuration Advisories

Date	Description	Number
01/05/05	Shared Tape Configurations in a SAN (EBS) with Legato Networker, Sun Solaris 9, and Sun SG-XPCI2FC-QF2 HBA's require Additional Manual Configuration Steps	OS040917_CW01
08/31/04	Consecutive backup jobs fail when a HP-UX host is configured as the Master server and 10 or more concurrent jobs are active.	OT040823_CW04
08/30/04	Legato Networker and Windows 2003 StorPort configuration requirements and limitations	OT040823_CW02
08/13/04	Tape Backup In StorageWorks Enterprise Backup Solution (EBS) Environment From ProLiant Server May Not Complete If Insight Management Storage Agents Loaded	ES040611_CW01
07/22/04	Removable Storage Manager (RSM) in Windows Server 2003 is not Disabling Properly Which Causes Performance Issues in Enterprise Backup Solutions (EBS).	OT040301_CW01

To view these advisories do the following:

- 1) Click on the advisory number above or go to the IT Resource Center at <http://itrc.hp.com> (NOTE: To review these documents, you must register to use this website.)
- 2) Select "search technical knowledge base " (located at the top of the page under "maintenance and support (hp products)")
- 3) To search the technical knowledge base, enter a search word like "EBS" or an advisory number listed above.

NOTE: There may be other important advisories that may effect your EBS environment that are not listed on this page.
Refer to the technical knowledge base or contact your local support representative for additional information.