

**IBM ThinkPad 600
Setup Guide**

IBM

**IBM ThinkPad 600
Setup Guide**

First Edition (January 1998)

IBM might not be offering the products, services, or features discussed in this document in all countries, and the information is subject to change without notice. Consult your local representative for information on the products, services, and features available in your area.

The following paragraph does not apply to the United Kingdom or any country where such provisions are inconsistent with local law:

INTERNATIONAL BUSINESS MACHINES CORPORATION PROVIDES THIS PUBLICATION "AS IS" WITHOUT ANY WARRANTY OF ANY KIND, EITHER EXPRESS OR IMPLIED, INCLUDING, BUT NOT LIMITED TO, THE LIMITED WARRANTIES OF MERCHANTABILITY OR FITNESS FOR A PARTICULAR PURPOSE. Some states do not allow disclaimers or express or implied warranties in certain transactions; therefore, this statement may not apply to you.

This publication could include technical inaccuracies or typographical errors. Changes are periodically made to the information herein; these changes will be incorporated in new editions of the publication. IBM may make improvements or changes in the products or the programs described in this publication at any time.

Requests for technical information about IBM products should be made to your IBM Authorized Dealer or your IBM Marketing Representative.

Copyright International Business Machines Corporation 1998. All rights reserved. Note to U.S. Government Users – Documentation related to restricted rights – Use, duplication, or disclosure is subject to restrictions set forth in GSA ADP Schedule Contract with IBM Corp.

Notices

References in this publication to IBM products, programs, or services do not imply that IBM intends to make these available in all countries in which IBM operates. Any reference to an IBM product, program, or service is not intended to state or imply that only that IBM product, program, or service may be used. Any functionally equivalent product, program, or service that does not infringe any of the intellectual property rights of IBM may be used instead of the IBM product, program, or service. The evaluation and verification of operation in conjunction with other products, except those expressly designated by IBM, are the responsibility of the user.

IBM may have patents or pending patent applications covering subject matter in this document. The furnishing of this document does not give you any license to these patents. You can send license inquiries, in writing, to the IBM Director of Licensing, IBM Corporation, 500 Columbus Avenue, Thornwood, NY 10594, U.S.A.

Trademarks

IBM, ThinkPad, and TrackPoint are trademarks of the IBM Corporation in the United States or other countries or both.

Microsoft, Windows, Windows NT, and the Windows 95 flag logo are trademarks or registered trademarks of the Microsoft Corporation.



January 1998

Thank you for purchasing the IBM ThinkPad* 600 computer! We have worked hard to produce a slim, lightweight computer that is loaded with state-of-the-art technology and easy-to-use features—at an affordable cost.

Please take a moment to register your computer by using the online registration program shipped with it. With this program you can send us your registration information electronically, by fax or by mail. Or, you can register on the World Wide Web at the address below. By registering with IBM, you will become eligible for additional benefits, such as notification of new options and updated information on your new computer.

If you have a problem and you need service, please use our Web site or call the IBM HelpCenter in your country. For the number in your country, look in the International Warranty and Service booklet shipped with your computer. The toll-free number in the U.S. is 1-800-772-2227.

The entire ThinkPad 600 development team has worked around the clock and across the globe to produce this outstanding computer for you, and we thank you for purchasing it.

You can register your ThinkPad through the IBM Web site at the following address:
<http://www.pc.ibm.com/register>

Thank you from all of us!

Contents

Getting Started	1
Electrical Safety	2
Identifying the Hardware Features	3
Setting Up Your Computer	7
Setting Up Windows 95	11
Customizing Your Computer	15
Registering Your Computer	16
Shutting Down Windows 95	17
Getting More Information	19

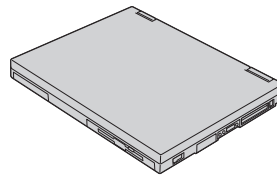


Getting Started

Welcome to the world of ThinkPad computers!

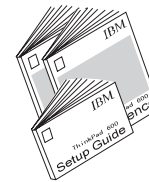
First, remove the items from the shipping box. Then match the items, one by one, with the following figures. If any item is missing or damaged, contact your place of purchase.

– Computer



– Books:

Setup Guide
User's Reference
Options by IBM Catalog

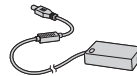


– Weight-Saver Bezel

Note: For models with CD-ROM drive, it is shipped in a carrying case.

For models with a CD-ROM Drive:

– AC Adapter

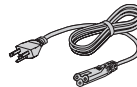


– *Introducing Microsoft Windows 95*

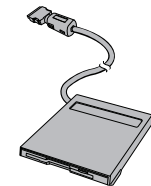


– Diskette Drive and Diskette-Drive Enclosure

– Power Cord



– *Quick Reference and Service Information Card*



– ThinkPad Customization CD and Recovery CD



– Envelope

International Service Information
Multilingual Licence Information
etc.

For models with a modem:

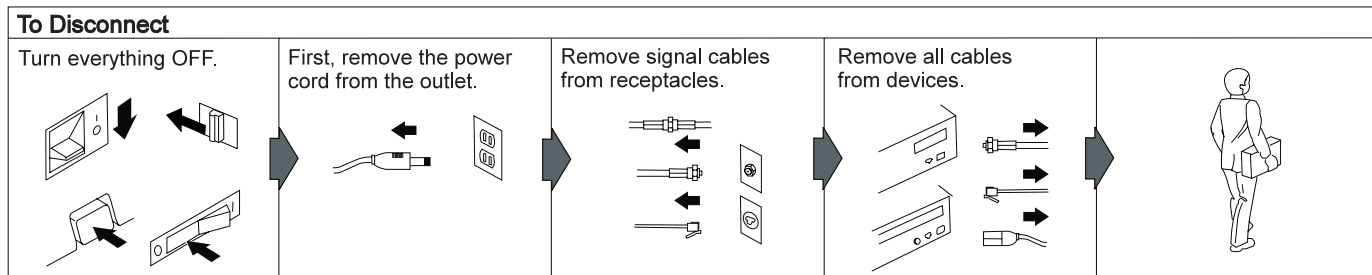
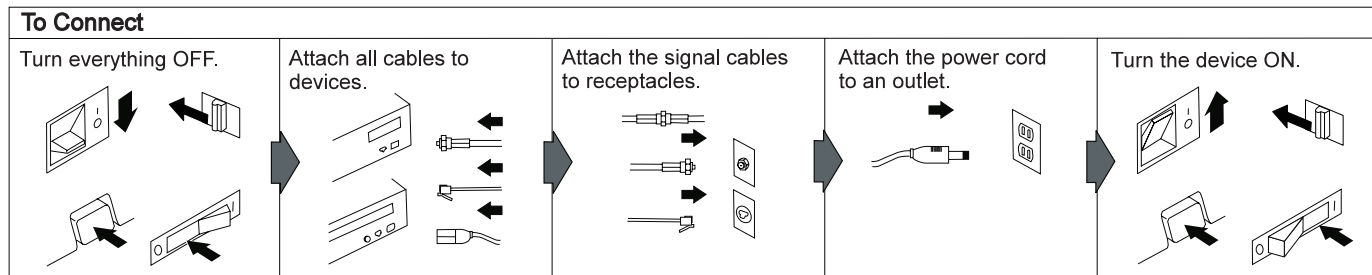
– Polybag Containing Hard Disk Screw and TrackPoint Spare Caps

– Modem Cable, Modem Enabler Kit, or Modem Flyer

Electrical Safety



Electrical current from power, telephone, and communication cables is hazardous. To avoid shock hazard, connect and disconnect cables as shown below when installing, moving, or opening the covers of the product or attached devices. The 3-pin power cord must be used with a proper outlet.



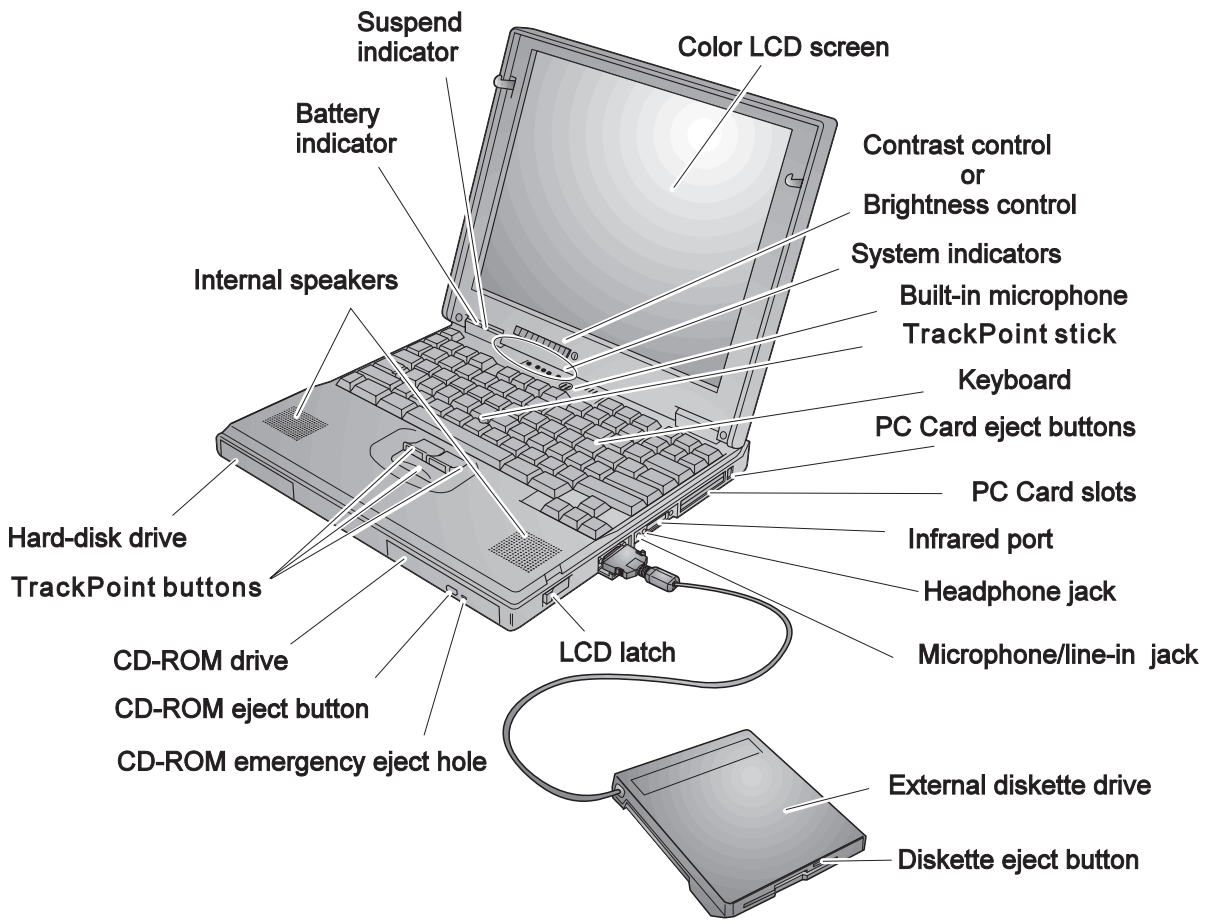
Note: In the U.K., by law:

The telephone line cable must be connected after the power cord.

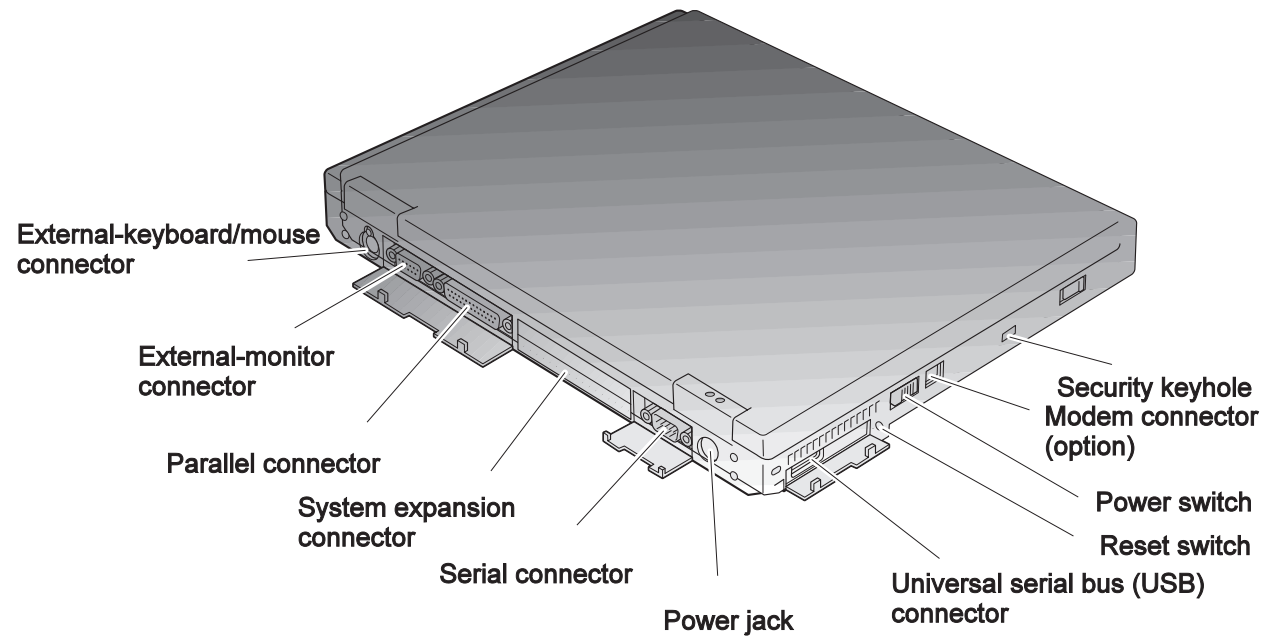
The power cord must be disconnected after the telephone line cable.

Identifying the Hardware Features

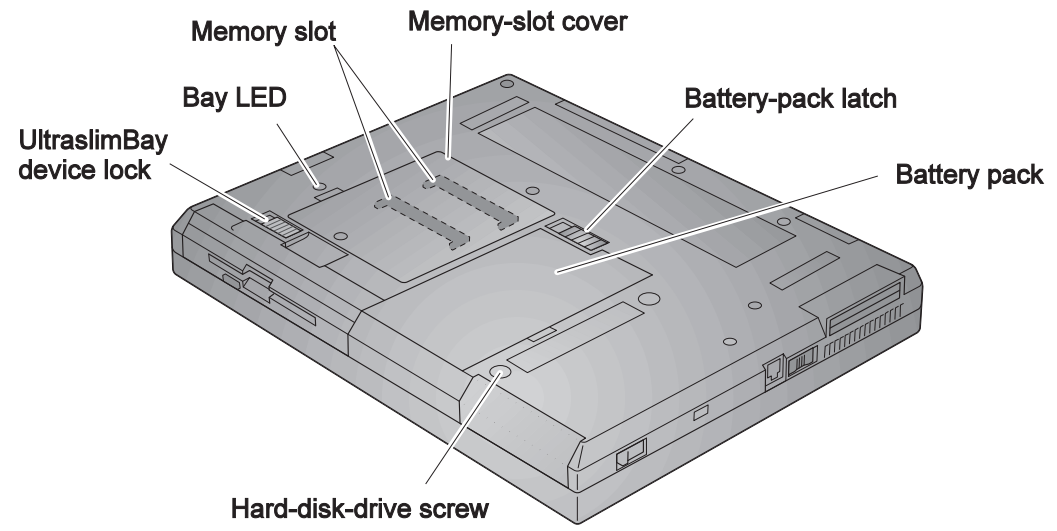
Front View (with external-diskette drive)



Rear View



Bottom View



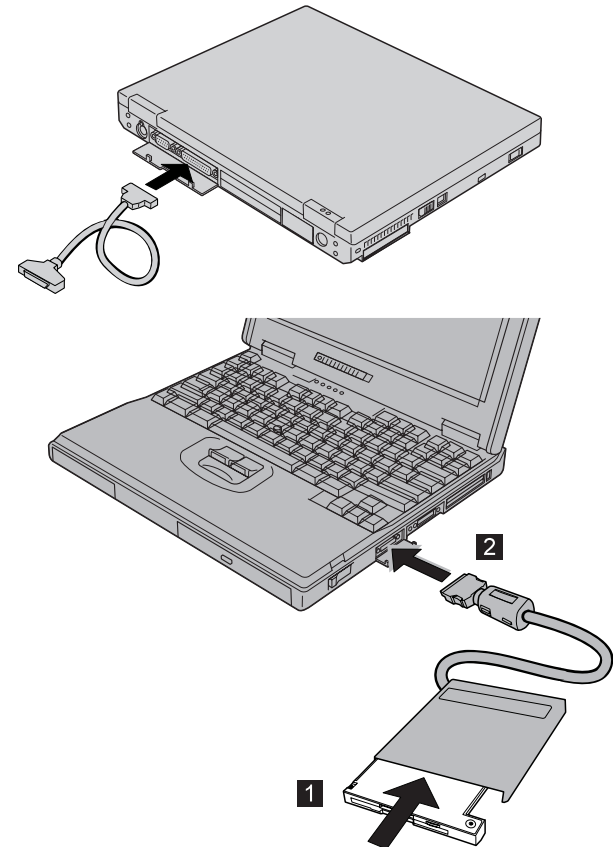
Setting Up Your Computer

You are now ready to assemble and start your computer.

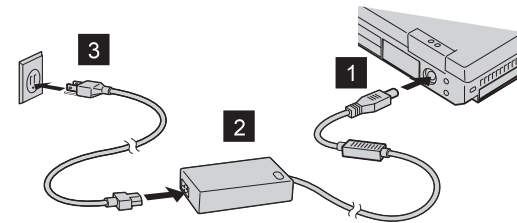
1 If you want to connect a printer to your computer, open the computer's connector cover. Connect one end of the printer cable to the parallel connector and the other end to your printer. Then power on the printer.

2 If you want to use the CD-ROM and the diskette drive at the same time, you can attach the diskette drive to the external-diskette-drive connector as follows:

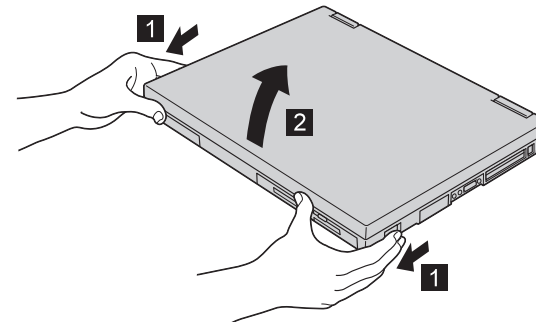
Insert the diskette drive in the diskette-drive enclosure and connect it firmly **1** . Connect the cable to the external-diskette-drive connector **2** .



3 Connect the AC Adapter to the computer's power jack (at the rear of the computer) in the order shown.

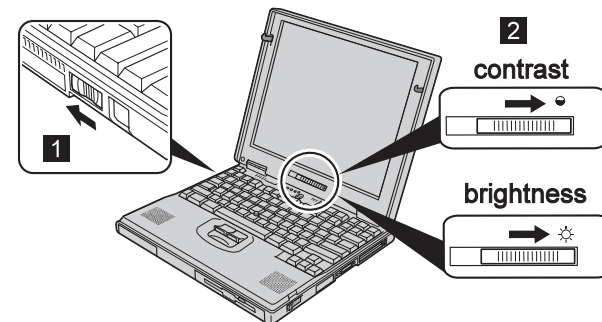


4 Open the ThinkPad computer.
Pull the liquid crystal display (LCD) latches **1** and open the LCD **2**. Then Position the LCD so that it is convenient for viewing.



5 Power on the computer.

- a) Push and release the power switch **1**. The power switch automatically snaps back to its original position.
- b) Adjust the display's contrast or brightness **2**.



After a single beep, the "Regional Settings" window appears. Go to "Setting Up Windows 95" on page 11.

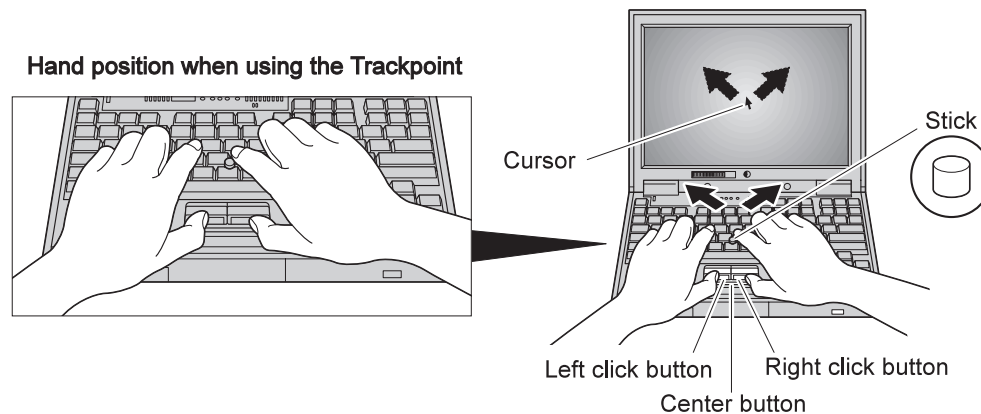
If any other window appears, a failure might have occurred in the computer. See the section on solving computer problems in the *User's Reference*.

Using the TrackPoint

The TrackPoint is a unique device for moving the pointer on the screen. You can perform all mouse operations with the TrackPoint. The left and right buttons function like the left and right buttons on a mouse. For an explanation of the center button, see the *User's Reference*.

To move the pointer, use the red-topped stick at the center of the keyboard. Press gently with your left or right index finger in the direction you want to move the pointer. To select and drag an object, press and hold one of the buttons with either thumb as required by your software.

Click means to press the left button once. **Double-click** means to press the left button twice within 1 second.



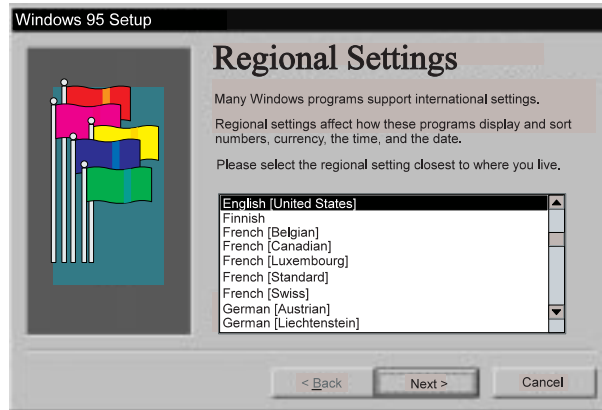
For more information about the TrackPoint, see the *User's Reference*.

Setting Up Windows 95

When you turn on your ThinkPad computer for the first time, the following screen is displayed:

Note: If the system stops while you are setting up Windows 95, turn the power off and then on again.

The following window should be displayed on your screen:



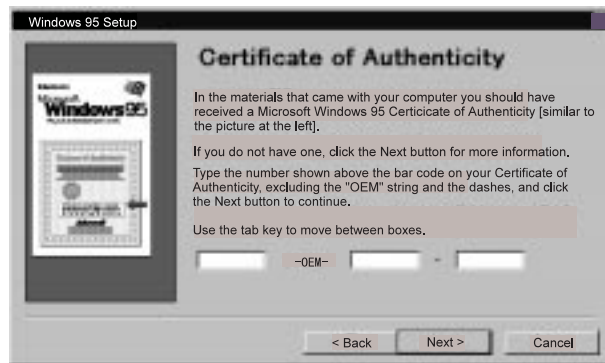
- 1 From the list, select the language you will be using. Then click on **Next**. The “Keyboard Layout” window appears.
- 2 From the list, select the keyboard you will be using. Then click on **Next**. The “User Information” window appears:



- 3 Type your name and company name in the fields. Then click on **Next**. The “License Agreement” window appears:

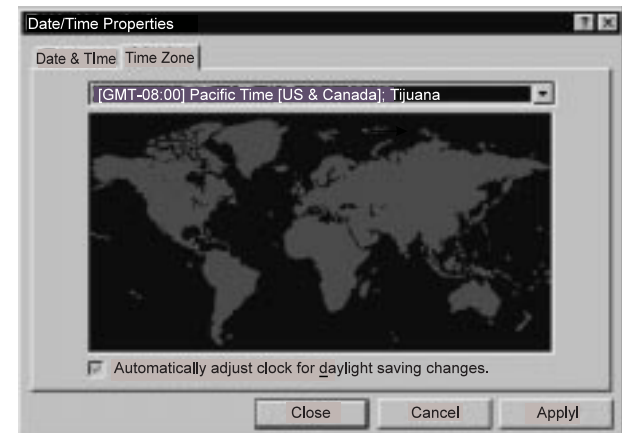


- 4** Read the contents of the window. If you accept the agreement, click on **I accept the agreement**. Then click on **Next**. The “Certificate of Authenticity” window appears:



- 5** Look at the cover page of *Introducing Microsoft Windows 95*. On your Certificate of Authenticity, find the “Product ID” above the bar code. In the three input fields of the window, type that number. Then click on **Next**. The “Start Wizard” window appears.

- 6** Click on **Finish** to start Windows 95. Some messages might appear, and then the “Date/Time Properties” window appears:



- 7** Click on and select from the list the region closest to your location.
- If you do *not* want to automatically adjust the clock for daylight saving time, remove the check from the box () by clicking on it.

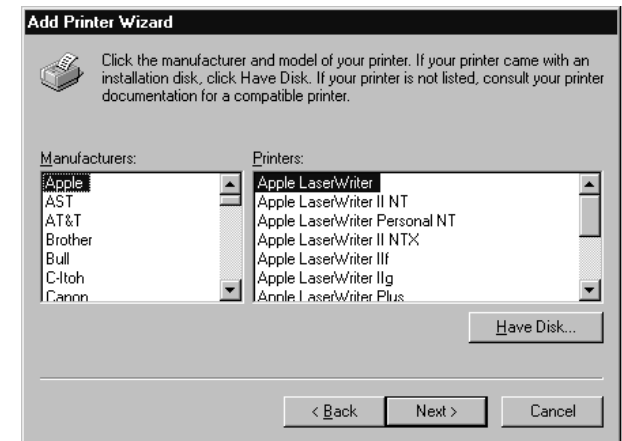
- 8** Click on the tab for **Date & Time** and go to that page. Check that the date and time are correct. If not, adjust them.

9 Click on **Close**. The first “Add Printer Wizard” window appears:



Note: If you do not have a printer, or want to set up a printer later, click on **Cancel** and skip the remaining steps. The setup is finished and you can start using your computer. You can set up a printer later by selecting the **Printer** icon in the “My Computer” menu of Windows 95.

10 To set up your printer, click on **Next**. The second “Add Printer Wizard” window appears:



11 Look for your printer manufacturer in the **Manufacturers** list.

If your manufacturer is listed:

a) Click on your printer manufacturer.

If your printer model is listed in the **Printers** list:

b) Select your printer from the list and click on **Next**.

If your manufacturer or printer is not listed:

a) Click on **Have Disk**. The “Install from Disk” window appears.

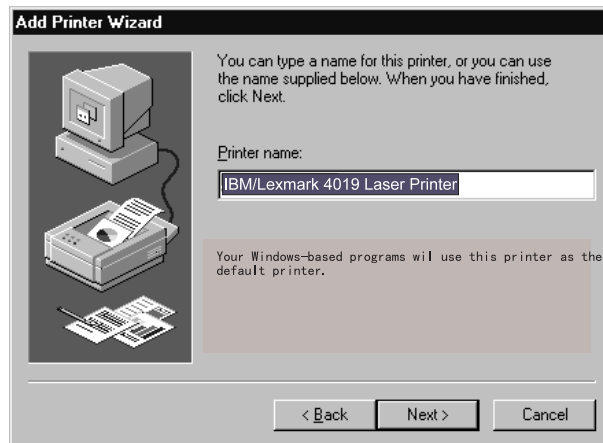
b) Insert the device driver diskettes that came with your printer into the diskette drive and click on **OK**.

c) Follow the instructions in the window.

The third “Add Printer Wizard” window appears:



12 Select the port you want to use with the printer, and click on **Next**. (**LPT1** is a default selection.) The fourth “Add Printer Wizard” window appears:



13 Type in the name you want for your printer, and click on **Next**. (You can use the name supplied.) The last “Add Printer Wizard” window appears:



14 Select **Yes** and click on **Finish**. A test page is printed.

15 Did the test page print correctly?

If so, click on **Yes**. The Windows 95 desktop appears.

If not, click on **No**. The “Windows Help” window appears. Follow the instructions in this window.



You have completed setup.

When you finish using your computer, you need to shut down the system. Go to “Shutting Down Windows 95” on page 17.

Customizing Your Computer

After you complete the Windows setup, the **ThinkPad Customization Center** icon is on your desktop. To help you customize your computer for your specific needs, we have provided a collection of setup wizards known as *ThinkPad Customization Center*.

In most cases, customizing your computer takes about 10 minutes. However, a complex setup such as installing a new operating system takes longer.

To start the ThinkPad Customization Center, do the following:

- 1** Double-click on the **ThinkPad Customization Center** icon. The ThinkPad Customization Center is launched into the default Web browser on your computer (Internet Explorer 4.0).
- 2** Read the welcome screen.
- 3** Click on **Getting Started** in the left column. **User Profile Wizard** appears in the right column.
- 4** Click on **User Profile Wizard** and follow the instructions on the screen.

You will need to use the ThinkPad Customization Center for the first-time setup only, but you can keep it on your desktop for future reference.

Note: User Profile Wizard asks you questions and gives you instructions on how to best use the ThinkPad Customization Center to set up your ThinkPad computer. For best results, be sure to follow all the instructions. Some ThinkPad Customization Center functions might ask you to restart your computer. If you restart, you might have to start the ThinkPad Customization Center manually and go back to the page you were on when you restarted.

Registering Your Computer

After setting up Windows 95, take a few moments to complete the ThinkPad registration. The information provided by you will help IBM to better serve you in the future. To register with Windows 95 desktop, do the following:

- 1** Double-click on **Register**.
- 2** Follow the instructions on the screen to complete the registration.

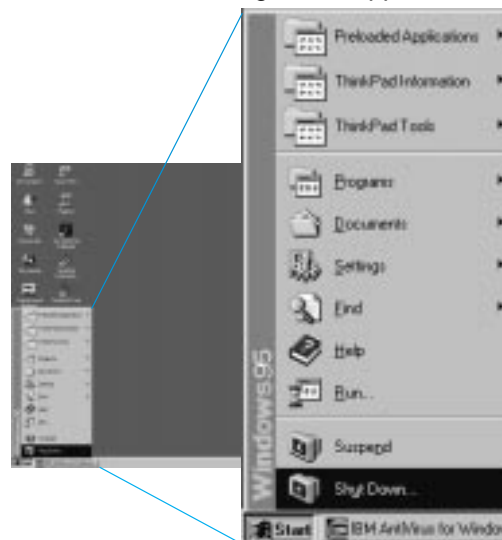
If you want to register your computer later, follow the same procedure.

If your computer uses other operating system, go to the following web site to complete registration.
<http://www.pc.ibm.com/register>

Shutting Down Windows 95

When you are finished setting up Windows 95 and you want to shut down, do the following:

- 1 Click on **Start** at the bottom left corner of the screen. The following menu appears:



- 2 Click on **Shut Down**. A confirmation message appears. **Shut down the computer?** is the default selection.
- 3 Click on **Yes** if you want to shut down the computer. The power turns off automatically.

Note

When you finish using an application software program and you want to shut down the computer, close the program first, and then use this procedure to shut down Windows 95.

To prevent damage to your computer files, make sure that you shut down Windows 95 every time you finish.

Getting More Information

After you have completed setting up your computer and Windows 95, you can start using your computer. If you want to learn more about your computer and its options, refer to the *ThinkPad User's Reference* and The *ThinkPad Online User's Guide*.

The *ThinkPad User's Reference* covers the following topics:

- Getting familiar with your computer
- Expanding features of your computer
- Protecting your computer
- Solving computer problems
- Getting service
- Features and specifications

The *ThinkPad Online User's Guide* covers the following topics:

- Using your computer outside your home country
- Using PC cards
- Resolving system resource conflicts
- Solving computer problems
- Installing software
- System management
- Using PS2 commands

Note: To start the online book, click on **Start**, move the cursor to **Programs**, then click on **ThinkPad 600 User's Guide**.

Recovering Your System

Your ThinkPad computer provides several ways to back up your system: the Diskette Factory program, the ThinkPad Customization Center, and the Recovery CD. You can use them to recover data in case you accidentally erase the preinstalled software or your hard disk fails. For details, refer to the *User's Reference*.

Note: You can get support information through the IBM web page at the following address:
<http://www.pc.ibm.com/thinkpad>

IBM

Part Number: 05L2158

Printed in the United States of America

